



Available free online with news from West River, Hopetoun, Jerdacuttup, Munglinup, and Lake King and Ravensthorpe

Back in business

Ravensthorpe Building Supplies, affectionately referred to as RBS, was established by Keith and Christine Rowe who successfully built and operated the business for over 30 years.

Since their retirement the business has had several owners. In August 2019 Len and Natasha Daw became the new proprietors.

Growing up locally Len (Ravensthorpe) and Natasha (Lake Varley) have fond memories of RBS, so they jumped at the opportunity to provide the Ravensthorpe and surrounding communities with the wonderful service they warmly remember.

Neither are strangers to owning and running businesses in Ravensthorpe. In the mid-90's they owned and operated a local shearing team. The mining boom took them to Paraburdoo in 1997, where they lived with their young family for the next two years.

Upon returning to Ravensthorpe in 2001 Len took up a position at the local machinery dealership and become a well-respected salesman and mechanic for the next 13 years. Natasha has had varied positions within the community, most significantly, starting the local Pharmacy with her good friend Angela. Today the Pharmacy is still a successful service to the community.

For the past 6 years Len and Natasha re-located to Holt Rock to help Natasha's family on their farm.

Len and Natasha are passionate about keeping business local and striving to satisfy their customers. During the process of building the business and getting products on the shelves they have encouraged customers to make suggestions and place order requests.

The store currently stocks a wide range of goods including:

- Building Supplies
- Paint and accessories
- Tools
- Welding Supplies
- Gardening Supplies
- Indoor and outdoor Plants
- Plumbing
- Automotive
- Fishing
- Boating



- Camping
- Homeware
- Outdoor Living
- Giftware

The business is rapidly expanding, and Len and Tash have big plans and look forward to the continued support of the communities. They look forward to meeting everyone and re-connecting with familiar faces.

For all enquires find them on Facebook at Ravensthorpe Building Supplies or contact them via email at ravybuildingsupplies@outlook.com or call 9838 1100.

Rural South Coast WA HOPETOUN HOUSES

RayWhite



4 GIBSON WAY \$430,000

Gorgeous, spacious double brick home on 1291sqm block with huge shed and beautiful gardens wit fruit trees galore. Open plan living, 3 x 2, upstairs studio and lounge, beautiful kitchen and outdoor alfresco. Tenanted.



50 MAITLAND ST \$317,000

Modern home, good sized kitchen and two large living areas. 3 x 2, single garage at the back of the house, side access. Fully secure yard. Tenanted.



28 BIRDWOOD ST \$230,000

Well presented beach house with ocean views, on a 900sqm block. 3 large bdrms, all BIR's, open living/family area with wood fire Large kitchen.



29 BUCKIE ST \$139,000

Location and potential with this charming cottage on good 813sqm block. Lovely old fruit trees, wide veranda, partly renovated. Good, big shed with side access.



13 CANNING BLVD \$330,000

Coastal classic living 3 x 2, plus extra toilet, established gardens, walk to the shops, beach, sporting club. Pool house, air-con, ceiling fans, double garage, rain water. Tenanted.



6/3 RAGLAN ST \$396,000

Modern brick 3 x 2 with lovely kitchen, dining/family room opens onto great yard and alfresco with cafe blinds. Easy care block within small complex. Tenanted.



30 FRANCE ST \$315,000

Modern 4 x 2 home, large rooms, open plan living, dining with A/C in the master bedroom. Fences easy care yard. Large double shed with power. Tenanted.



29 RAGLAN ST \$330,000

Unique 2 storey with amazing ocean views, 3 x 1, feature spa upstairs, big 900sqm block with garage and central. Tenanted.



17 MAXWELL \$250,000

It's a charmer with modern 3 x 1, open plan living. Massive shed and good rear access. Walk to school and shops. Neat and easy care. Ideal first home or easy acre holiday house. Tenanted.



16 DOUGLAS ST \$330,000

Unique Tram/house in the centre of old Hopetoun. 1 x 1 home on a large corner 1/4 acre block with solar panels. Walk to everywhere - shops, beach, hotel and sporting complex. Tenanted.



22 CULHAM ST \$340,000

Modern design in old Hopetoun. 4 x 2, single garage, open plan living and large kitchen. Great family home. Gazebo and entertaining area. Walk to everywhere.



32 BIRDWOOD ST \$449,000

New double brick home with 4 x 2, lounge, massive living area and kitchen, plus extra theatre/games room - if you want space look no further! Double garage. Tenanted.

25 Veal Street Hopetoun

raywhiteruralsouthcoastwa.com.au

Ph: 08 9838 3100 ● **Residential Sales: 0428 711 576** ● **Rural Sales: 0429 299 797**





Christmas Carols Sing-a-long

On Friday December 20th, 2019, community members gathered together at St Andrews Anglican Church, Ravensthorpe, to celebrate the spirit of community and Christmas, at the annual Carols Sing-a-long.

This year's venue provided a particularly beautiful atmosphere, with the rays of sunset filtering through the stained glass windows of the church, and bathing it in a gentle light. Battery operated, colour changing candles were distributed to attendees, adding yet more colour to the glittering scene.

The Qualup Choir, resplendent in their festive dress, were once again in fine voice. They demonstrated their skills and versatility by singing everything from the classic carols, some incorporating solo elements, to one written by choir members with a distinctly Australian flavour.

The evening also included some lovely readings, a ukulele performance, and lastly a blessing for a safe and wonderful Christmas period.

Following such a full night of singing, the shared supper proved most welcome and enjoyable! Many thanks to everyone who attended and shared in the festivities.

—A Caelli

This week's SPECIALS



Extra Large Premium Nectarines.....	\$4.20kg
Iceberg Lettuce.....	\$1.50ea
Gourmet Tomatoes.....	\$3.50kg
Red Onions.....	\$3.00kg
Scotch Fillet Steak.....	\$30.00kg
Whole Fresh Chicken.....	\$5.00kg
Lamb Forequarter Chops.....	\$15.00kg
Steggles Chicken Tenders 400g select varieites.....	\$3.97ea
Smiths Chips 150-170g select varieties.....	\$1.75ea
Kleenex Double Lenght toilet Tissue 4 pack.....	\$3.50ea
Omo Laundry Liquid 2 litre or Powder 2kg select varieties.....	\$11.00ea

On sale Wednesday February 12th to
Tuesday February 18th, 2020

Hopetoun IGA

30 Veal Street Hopetoun • 9838 3919

Contacts

Ambulance:

Emergency 000
Non-Emergency 13 12 13

Hospitals:

Ravensthorpe 9838 2211
Esperance 9071 0888
Albany 9892 2222

Doctors Surgery:

Hopetoun 9838 3854
Ravensthorpe 9838 1600

Dentist:

Ravensthorpe 9838 1322

Esperance Hospital

Public Dental Clinic..... 9071 0889

Community Nurse/Child Health:

Ravensthorpe 9838 2211

Extended Care Nurse:

Hopetoun 9838 3323

Home and Community Care

Office 9838 3144
Mobile 0429 889 675

Community Vehicle Transport

Coordinator 0439 335 147

Hospital Auxiliary:

Second Tuesday of the month 1.30pm in the Red Room
Contact Judy Harp

Allied Health:

Services such as Physio, Dietician, Occupational Therapy and Speech Pathology are available. Contact Ravensthorpe or Esperance Hospital to find out more about these services.

Mental Health:

There is a Mental Health service available currently. Please contact Ravensthorpe Hospital to find out more about this service.

Shire of Ravensthorpe Councillor Contact Details

Shire Council Offices..... 9839 0000

Keith Dunlop—Shire President.....

Phone: 9838 330; Mobile: 0428 383 302
Email: Keith.dunlop@ravensthorpe.wa.gov.au

Jules Belli—Deputy Shire President Mobile: 0427 440 582

Email: Jules.belli@ravensthorpe.wa.gov.au

Ian Goldfinch Phone: 9838 5049; Mobile: 0428 385 049

Email: ian.goldfinch@ravensthorpe.wa.gov.au

Tom Major Mobile: 0403 782 887

Email: Tom.major@ravensthorpe.wa.gov.au

Mark Mudie..... 0428 356 064

Email: mark.mudie@ravensthorpe.wa.gov.au

Ken Norman 0428 396 055

Email: ken.norman@ravensthorpe.wa.gov.au

Graham Richardson Phone: 9838 3880; Mobile: 0474 492 810

Email: Graham.richardson@ravensthorpe.wa.gov.au

Word of the Day

obloquy noun | AH-bluh-kwee

Definition:

1 : a strongly condemnatory utterance : abusive language
2 : the condition of one that is discredited : bad repute

Did You Know?

English speakers can choose from several synonyms to name a tongue-lashing. Abuse is a good general term that usually stresses the anger of the speaker and the harshness of the language, as in "scathing verbal abuse." Vituperation often specifies fluent, sustained abuse; "a torrent of vituperation" is a typical use of this term. Invective implies vehemence comparable to vituperation but may suggest greater verbal and rhetorical skill; it may also apply especially to a public denunciation, as in "blistering political invective." Obloquy, which comes from the Late Latin ob- (meaning "against") plus loqui (meaning "to speak"), suggests defamation and consequent shame and disgrace; a typical example of its use is "subjected to obloquy and derision."



NEXT ISSUE ADVERT DEADLINE:

5pm, Friday February 21, 2020

NEXT ISSUE EDITORIAL DEADLINE:

5pm, Sunday February 23, 2020

ALL ENQUIRIES:

contributions@cospirit.net
Kylie Thomas, Co-ordinator, 0408 840 447
Or Attn: Contributions, PO Box 135, Ravensthorpe 6346.

Or Hopetoun and Ravensthorpe Community Resource Centres will accept written articles.
Include name, address and phone details in all correspondence.

ARTICLES AND PHOTOS

Articles to be sent in Word format.
Photos to be sent in JPEG format.
Photos minimum size 500mb.
Maximum of two photos per email.
Photos of children require parental permission.

GENERAL ADVERTISING AND CLASSIFIEDS

Content to be sent in Word, PDF or JPEG formats.
Classified proofs on request only.

ACCOUNTS AND SUBSCRIPTIONS

Email financeadmin@cospirit.net
Phone enquiries Sandi Hunter,
0417 950 615.

MANAGEMENT COMMITTEE

Email secretary@cospirit.net or
PO Box 135, Ravensthorpe 6346
GRIEVANCES—contact secretary by email secretary@cospirit.net

Your Historical Society

■ Ravensthorpe Historical Society

Ravensthorpe Historical Society, or RHS for short is the custodian and curator of the Shire's past.

It collects, documents, catalogues and exhibits items of interest used by past residents. It also provides an extensive archival service with information on people/places/events, going back decades. And it boasts an important photographic collection, samples of which you will have seen on Facebook.

RHS has also been the leader in key projects such as the conservation of Dance Cottage, Kukenarup memorial, building of the Farming and Mining annexe and the yet to be finalised heritage street walk and old railway station picnic shelter, just to name a few.

The committee currently in charge of RHS have more great ideas, a lot of vision, but waning energies! In short, they are getting old!!! I know, I know, it happens to all of us, but this vital organisation needs new, younger and fresh blood.

There are many things that could be done within RHS. Attending monthly meetings is not a mandatory condition for becoming a member! RHS could use social media savvy 'youngsters', people skilled in photography, desk top publishing and webpage maintenance, curious people to research facts and objects on the internet, energetic people to help out at the odd busy bee, organised people who could take on projected historical events and imaginative people to think outside the square and come up with great ideas on how to capitalise on RHS' strengths.

Someone with an interest in education could liaise with schools; the museum is an under-utilised educational resource.

You are probably aware that RHS's current major project is the planned extension to the museum building with the creation of an interpretive centre as its' focus. Travellers love visiting interpretive centres where they can garner information on things animal, vegetal and mineral and talk to



■ Dance Cottage.

locals, as well as buy home-made preserves and handicraft items. For this, younger minds too are needed.

RHS'AGM is the first Saturday of March. A committee will be formed (so you don't have to worry you'll be signed up for a position!), there will be morning tea.

It would be HUGELY encouraging if some of you, even if not attending the meeting, could register your interest, or, better still, offer some skills to build an even better RHS.

—In hope, RHS Committee

Be Connected

■ Ravensthorpe CRC

On Friday 7th February, Ravensthorpe Community Resource Centre held our first "Be Connected" afternoon tea for 2020. We had a relaxed session talking about our technology experiences over the holidays and discussing what we would like to learn in upcoming group sessions.

We plan to cover photo organisation and making safe online payments in the next few weeks, and we're open to suggestions!

Ravensthorpe CRC are currently running regular free afternoon teas on Fridays at 2pm to go through the Be Connected learning library and talk about any technology-related issues of interest to you.

Please get in touch with Liz on 08 9838 1340 or rcrc@westnet.com.au if you are interested in joining our group session, or to set up a free one-on-one session.



Choose a settlement agent who
stands out from the crowd
Support your local business &
let our experience work for you!



Call Meredith on 9071 1655
or email: meredith@compasswa.com.au

Located at
101 Dempster Street Esperance

A silent summer

Here at Ravensthorpe, residents know it is very, very dry and at January 2020 has been so for the past two years. Here at Carracarrup Creek where I live, the annual rainfall for 2018 and 2019 was 249 mm and 241 mm respectively. Annual rainfall here has varied from 211 mm to 597 mm over 25 years with a mean of 422 mm.

The intense dry spell affects us all and the world we live in in different ways. I have enjoyed the presence of birds in my life for most of my life and I vividly recall my delight at age eight when farmer/ornithologist Angus Robinson showed me splendid blue fairy-wrens on his Coolup farm. Birds have delighted me ever since.

This is an account of the decline in bird activity over the last two years. It is true that I still wake up to the kookaburra's laugh at first light followed by the currawong's squeak and then the ringnecks clatter about on the roof and in the gutters harvesting what little dew is available to them and the second most lovely birdsong, and Australian of sounds, magpies carolling, is fortunately still part of my dawn morning. Galahs too in their pink and grey glory are part of the dawn birdscape. But it is after the sun comes up and the day warms that the bird activity is most noticeably diminished.

I have been participating in Birdlife Australia's bird atlas project since 2012. This project must surely be Australia's most data intensive citizen science project. Since 1998, 9,000 contributors have conducted 1.2 million surveys and submitted 18 million records.

Here at Carracarrup Creek I record birds systematically at four different habitat based sites. I have done 236 surveys and recorded 76 different birds over four sites in eight years including some really interesting birds—malleefowl, Carnaby's cockatoo, western whipbird and the beautiful red-eared firetail and golden whistler.

Anyone who spends time in the bush here will be aware that bird activity is now way, way down. Although you don't need statistical data to tell you this, I thought it would be interesting to see what the results of my atlas surveys were telling me. I selected data from my most productive site, a jam tree - swamp yate woodland along the creek. At this site alone I have recorded 51



■ Carracarrup Creek in 2017 following flooding in February.



■ Carracarrup Creek in 2020 following two very dry years. Not only the water level but the brightness of the bush is also diminished.

different birds over eight years. The average number of bird species and individuals per survey were 10 and 28 respectively.

In January 2020 I recorded five species with only one individual of each. Now you don't need to be a mathematical genius to realise that this is a very

significant difference. I recall the survey day vividly; it was still, warm, part cloudy - ideal conditions for bird recording but the silence and absence of birds was so striking that it felt like my world had changed in an eerie sort of a way.

A silent summer

■ From Page 6

The contrast between January 2020 and previous surveys when red wattle birds were invariably present 'choka choking' away; particularly so when the swamp yate trees are flowering in March-April and purple crowned lorikeets zoom through the canopies at breakneck pace, was striking. Furthermore honeyeaters particularly New Holland honeyeaters which are usually ubiquitous and abundant along the creek were totally absent.

As someone who has watched and recorded the huge changes in numbers of species of fauna in arid and semi-arid Australia responding to rainfall, or the lack of it, for most of my life, the present scarcity of birds does not surprise me. I know that following rain again the woodlands and mallee will be replete with a persistent cacophony of birds and their song and I will be glad.

—Andrew Chapman
January 2020.



■ The mixed swamp yate and jam tree woodland that is good bird habitat along Carracarrup Creek. The white posts indicate past flood levels.

Welcome to our world of Tyres and Batteries!

- ✓ Wheelbarrows
- ✓ Golf carts
- ✓ Gophers
- ✓ Ride-On's
- ✓ Bag Trolleys
- ✓ Motorbikes
- ✓ ATV's
- ✓ Cars
- ✓ Utes
- ✓ Trucks
- ✓ Caravans
- ✓ Trailers
- ✓ Implements
- ✓ Tractors
- ✓ Sprayers
- ✓ Headers

We stock and repair a wide range of Tyres and Batteries locally.



Contact Riaan for all your Tyre and Battery needs on 0474 143 691

You can find us at 85 Tamar Street in Hopetoun
or via email hopeytyreservices@gmail.com

ABN: 70 681 573 176 – Licence Numbers: MRB8814 & MR17261

WE WANT TO WISH STEVE & MARY ALL THE BEST AND IT IS A HONOUR TO KEEP THE COMMUNITY ROLLING INTO THE FUTURE!



Starvation Boat Harbour Swimming Lessons: A Family Tradition

■ Vacswim

Friday January 10th saw the successful end of Education Department of WA Vacation Swim (Vacswim) programme at the idyllic Starvation Boat Harbour (Starvo).

Boasting a beautiful, north facing bay that combats most of the prevailing winds and summer weather, Starvo provides a wonderful safe opportunity for children to learn how to swim competently in the ocean, whilst also offering a range of more thrilling beaches for surfing practice and beach fishing.

Running for at least 25 years, the tradition of two weeks at Starvo at the start of the year is a time honoured holiday for parents and children alike. For some families, such as the Murdock clan, this time is a valuable catch up time with members of the family convening from all over the state at Starvo for swimming lessons and family bonding. For others, such as the White/ Crane family, it is a way to reconnect with their Jerdacuttup origins and enjoy the wilderness of Starvo after the hectic pace of urban life.

Yet for some families it is also the start of new traditions and appreciation of the treasures that the bay has to offer. This year's swimming lessons were of particular poignancy as there were multiple instances of three generations of families in attendance, including the Murdock, Hughes, Foulds and Crane families.

The 2020 season had 14 students enrolled in the programme, participating in stages ranging from 1 through to 9. Vacswim employed Swim supervisor, and long-time supporter of the Starvo swimming lessons, Niki Crane, was delighted with the numbers but urged parents to be proactive with their enrolments and make sure they enrol their children during Term 4, rather than waiting until the day of swimming lessons commencements.

Without sufficient prior enrolments, the programme is at risk of being cancelled by the Department, which can sometimes be a death knell for the more remote beach programmes as, once cancelled, they are at risk of not



■ Previous participants, now mothers and grandmothers, enjoying watching the new generation of students.

being reinstated.

Seasoned swim instructor, Deli Jones, worked tirelessly to support the enrolled students to achieve their swimming goals and it is in part due to her passion and dedication that the students enjoyed their swim lessons so thoroughly. Having worked for the Department as a Swim Instructor on and off for the last 7 years, Deli strongly encourages newcomers to the role.

Any Austswim qualified person can apply to the Department to teach at either in-term or Vacswim programmes, and often instructors in areas such as the Ravensthorpe/Hopetoun region are in short supply. In fact the 2019 lessons at Starvo were cancelled due to the lack of available instructors.

Deli and her husband, Brian must also be thanked for donating their time and resources to install the Jerdacuttup Progress Association (JPA) owned pontoon, which provided an excellent

platform for swimmers young and old and even the canine heroine, Zara Morison the rescue Labrador!

An initiative of the JPA, the current pontoon is approximately 15 years old and is nearing the end of its term. There are hopes that the pontoon will be replaced in the upcoming years. The longevity of the pontoon is testimony to the commitment of the community towards the Vacswim programme and to providing both safety and entertainment elements to Starvo for the school summer holidays.

With the majority of swimmers being in the earlier years of schooling, ranging from Pre-Primary through to Year 6, the future of Starvo's swimming lessons looks strong.

Parents wishing to know more about the Vacswim programme can learn more at the website: <https://www.education.wa.edu.au/vacswim>.

—Jeanette Denham



■ Niki Crane (L) and Deli Jones (R) with students from the 2020 programme.



Galaxy Lithium Australia
Mt Cattlin Mining Operations

EXPRESSION OF INTEREST

Galaxy wish to invite interested members of the community to attend an information session for the rehabilitation of the Waste Rock Landform, Southern Face. (Facing Ravensthorpe)

Galaxy are interested in hearing community knowledge on selected species from the local area for the site rehabilitation.

Please register your expression of interest before Monday 28th February 2020.

Email mtcattlin@galaxyresources.com.au or Phone 9839 0300.

HOPETOUN CRC COLOUR RUN

5K WALK OR RUN | MCCULLOCH PARK, HOPETOUN
ALL AGES WELCOME

MARKETS FOOD DRINKS
LIVE MUSIC
CARPARK SOCIAL
TANYA RANSOM



SATURDAY 22ND FEBRUARY 3PM-7PM

REGISTER ONLINE OR AT THE CRC FOR \$25

WWW.HOPETOUNWA.COM





Get set for Colour Fun

■ Hopetoun CRC

Get excited for this fabulous colourful event coming up on Saturday February 22nd, 2020. Challenge yourself to see who can be the most colourful while having lots of fun.

What is it? The Colour Run is not a race, so you don't have to be extremely fit to enter. It is an all ages 5km walk or run that you can complete at your own pace. You will start at McCulloch Park, travel along Southern Ocean Rd until the 2 Mile Beach turn off and then head back to McCulloch Park.

There will be colour stations along the way where you will be getting covered in coloured powder. The powder is completely safe, it is simply coloured cornflour. There will be some other activities along the way to make sure you go home brightly coloured! Anyone can participate, children are welcome.

Limited tickets are available so register now online at www.hopetounwa.com or in person at Hopetoun CRC. The cost is \$25 per person which includes: Colour Run Wrist Band, T-Shirt, Sunglasses & Powder Sachet.

The event goes from 3pm to 7pm with the colour run commencing at 4:30pm. There's lots of free entertainment for all to enjoy so come along and enjoy the afternoon in the park.

There will be a wide variety of market

stalls including stalls from local community groups so new (and old) residents can find out what they're all about.

Live music featuring Tanya Ransom with her folky-blues passion followed by Esperance band, Car Park Social with their alternative blues-rock tunes are set to cruise us through the afternoon.

There'll be lots of delicious food available to purchase and BYO alcohol is permitted within the park boundaries so bring your esky and chair too!

We are proud to promote this as a 'green' event with no plastic packaging at the food stalls and no plastic bottles. Bring your own water bottle and refill it for free at our free filtered water station. Pop into the CRC stall to find out more about what else we're doing to build a low waste community.

Hopetoun CRC provides vital access to government and community services to people in our remote region, many of whom either have no computer, limited internet access or limited digital literacy. With more and more Government services being made available exclusively online, our CRC is becoming even more important.

This event is being held to help promote our services and an opportunity for our community to celebrate. Please come down and show your support for our CRC and enjoy a great fun day. You could also show your support by volunteering at our event



(contact us to register your interest).

Our Shire and the communities within it, continue to be impacted by drought and other disasters and yet we still manage to stick together and stay strong. Let's celebrate our wonderful community, our CRC and our people, let's get together and have some fun.

For more information please see our website www.hopetounwa.com or contact us on 9838 3062.

Get FREE support to manage your health online



Visit our stall at the Hopetoun Colour Run
to find out how we can help
Saturday 22nd February 2020 3pm – 7pm



Find out more about Health My Way

■ Hopetoun CRC

Health My Way is a national digital health literacy program delivered by community organisations, locally Hopetoun Community Resource Centre, to support people aged over 18 years to gain essential skills and confidence in managing their health and wellbeing online. Supporting people to learn essential digital health literacy skills is critical to ensuring

every Australian has the ability to make informed, confident choices when it comes to supporting their health and wellbeing online.

Our Digital Health Mentors are currently training up to offer our community free support to help you manage your health online.

Come to our stall at the Hopetoun Colour Run on Saturday February 22nd, 2020 3pm - 7pm to find out more.



Friends of the Fitzgerald AGM weekend coming up!

■ Friends of the Fitzgerald

On Saturday, March 14th, Friends of the Fitzgerald River National Park will hold its Annual General Meeting at Twertup Field Studies Centre. We will gather for a shared morning tea from 9:30am on Saturday, with the AGM to follow at 10:30am.

After a break for lunch at 12 noon, at 1:30pm we will hear from our guest speakers Dr Alison Lullfitz and Noongar Elder Auntie Carol Pettersen, who will present on their collaborative research exploring how specific cultural activities have influenced floristic diversity and patterns in southwestern Australia.

At 2:30pm we will break for afternoon tea, followed by free time and a social evening.

On Sunday, March 15th, we will have free time with the option to participate in a Citizen Science project determining the impact of fire on vegetation from 8.30am-2.00pm (approx). This activity will entail bush walking and will require that you wear sturdy boots, have sun protection and drinking water.

All executive positions will be declared open at the AGM with the view to encouraging new committee members. We are particularly looking for people to fill the roles of Narpulungup News Editor, Twertup Subcommittee Representative, and Treasurer. If you are interested in learning more about any of these roles, please contact us: admin@fitzgeraldfriends.org.au

As always, this is a BRING YOUR OWN EVERYTHING weekend including food

and camping gear. There is drinking water on site and a barbecue available for cooking.

There are limited beds available, which may be booked by emailing admin@fitzgeraldfriends.org.au

Twertup is in the north west of the Fitzgerald River National Park, at the end of Twertup Track (about 10 km long, 4WD), which comes off Pabelup Dve/Quiss Rd, 25 km from South Coast Hwy.

If Twertup is closed due to wet weather, the back-up venue is Fitzgerald Hall on South Coast Hwy, 56 km east of Jerramungup. Overnight camping is available there.

We look forward to seeing you for our AGM weekend - new members are very welcome!

Peter Rundle MLA

Member for Roe

Narrogin Office
PO Box 378
Narrogin WA 6312
Ph 08 9881 1225
Fax 08 9881 3082

Esperance Office
107 Dempster St
Esperance WA 6450
Ph 08 9071 6555
Fax 08 9071 6788

Peter.Rundle@mp.wa.gov.au
www.peterrundle.com.au
@PeterRundleMLA
facebook.com/PeterRundleRoe



THE NATIONALS for Regional WA

CONCRETING MARK CAMERON CONTRACTING

All aspects of concrete
Supply and lay with onsite mixing in the
areas of Hopetoun & Ravensthorpe.

Contact Mark 0429 653 031

Residents treated to Carols

The Qualup Choir sang Christmas Carols to community members in a variety of streets in Hopetoun.

The Choir specifically went to Aldyth and Ian Campbell's house and sang at the back door where he could see and hear them. Ian is currently housebound. They especially enjoyed it when the kids joined in.

Also long-time resident Wilma Goddard was treated with a private visit from the choir.

It was a wonderful gesture on behalf of the Choir to visit the streets and members of the community joined in and were waiting for the choir to pull up in their street.



■ The Choir made a special visit to Aldyth and Ian Campbell's house.

HOUSES/UNITS FOR LEASE

In these towns:-

- Katanning
- Gnowangerup
- Lake Grace
- Newdegate
- Lake King
- Varley
- Ravensthorpe
- Jerramungup
- Bremer Bay

ENQUIRE TODAY

(08) 9845 9697 or admin@advancehousing.com.au





ALBANY
CITY TOWING SERVICES
Paul Armstrong
Proprietor
Mobile 0418 936 010
Tel: 9842 2838
14 Prior Street Albany WA 6330
paularmstrong@smashrepairer.com

*Paul Armstrong
Panel Beaters*
24 Hr Towing



**Albany
Smash
Repairs**

All Makes & Models
All Work Guaranteed
**0418 936 010
9842 2838**





paularmstrong@smashrepairer.com
www.smashrepairer.com

Solid foundation for Biosphere

Following on from the successful renomination of Fitzgerald Biosphere and the celebration of this achievement, the Fitzgerald Biosphere Community Collective (FBCC) have been working to establish a solid foundation from which to operate.

As part of this, the FBCC have successfully established a multi-stakeholder Memorandum of Understanding, developed its strategic path forward and have dedicated time to establishing how this collective can best collaborate to achieve the 'big ticket' objectives in the Fitzgerald Biosphere.

Following this critical groundwork has been the successful development and resourcing of two key projects in the Fitzgerald Biosphere for early 2020:

1. The Fitzgerald Biosphere 2020 Regional Insights survey. This is an important step for the FBCC as it seeks to engage with the local community and its visitors about the Fitzgerald Biosphere and get an insight into what people know and think. This research will provide vital information to the FBCC to maximise the opportunities and meet the future needs of the region. As someone who has an affiliation with the Fitzgerald Biosphere, we are inviting you to participate. Please visit <https://www.surveymonkey.com/r/FitzgeraldBiosphere> to have your say. Hard and soft copies are also available if you prefer – just let me know and I will forward these on.

2. Regional training to be delivered in the region, being:

a. Non-for-profit governance and leadership (to be held in March 2020 in Jerramungup and Ravensthorpe), and



b. Funding diversification workshop (more details to come).

If you would like more information on either of these training opportunities, just let me know.

If you would like any further information, please do not hesitate to contact me on 0429 960 810. If you would like to be removed from this distribution list, again, please just let me know.

—Johanna Tomlinson

Warning: Snake season is here

All snake venom is made up of huge proteins (like egg white). When bitten, a snake injects some venom into the meat of your limb (NOT into your blood).

This venom cannot be absorbed into the blood stream from the bite site.

It travels in a fluid transport system in your body called the lymphatic system (not the blood stream).

Now this fluid (lymph) is moved differently to blood.

Your heart pumps blood around so even when you are lying dead still your blood still circulates around the body. Lymph fluid is different. It moves around with physical muscle movement like bending your arm, bending knees, wriggling fingers and toes, walking/exercise, etc.

Now here is the thing. Lymph fluid becomes blood after these lymph vessels converge to form one of two large vessels (lymphatic trunks) which are connect to veins at the base of the neck.

Back to the snake bite site.

When bitten, the venom has been injected into this lymph fluid (which makes up the bulk of the water in your tissues).

The only way that the venom can get into your blood stream is to be moved from the bite site in the lymphatic vessels. The only way to do this is to physically move the limbs that were bitten.

STAY STILL! Venom can't move if the victim doesn't move.



Stay still!

Remember people are not bitten into their blood stream.

Get people to move you or run around for you.

Poisons Information 13 11 26, 24 hours per day.

<https://www.scgh.health.wa.gov.au/Our-Services/Service-directory/~media/6674063A8BF94460A7EE9B5B417338EC.ashx>

—Paul Retallack

Senior Ranger/Building Maintenance Coordinator

Ask Wilma

Is age relevant when one thinks about a person?

Do we gather wisdom as we age?

Some cultures believe this so strikingly that they believe they will gain wisdom and strength by eating flesh from an older person!

[Don't worry Wilma we haven't got you lined up for the snack bar yet - though there is no doubt we would benefit if this theory is true]

We certainly gather experience as we age—but Wilma has expressed wisdom and experience for as many years as I have known her, and I think we met somewhere in the 1980's. So age is not an essential part of the scenario.

Even back then when Wilma and Yvonne were our HACC leaders, the mantra in answer to any enquiry was "Ask Wilma";

Or if you wanted anything done, it was "Ask Wilma"—the efficient, knowledgeable, and caring person who came to the rescue in every circumstance. She was a carer, an organiser, and a fundraiser for the community. If she couldn't do it herself then she found someone who could.

So it was no surprise that when Wilma retired from HACC she became a leader in other areas—like the sewing group, and that another group of people started saying "Ask Wilma" when they were in doubt or a problem arose.

Computers also entered her field of expertise, firstly I imagine with the administrative work with HACC, then, alien as it is to my old fashioned ideas of sewing, with programmes for sewing intricate multi-coloured designs.

Who else could you approach but Wilma.

Wilma—we have all treasured you during the years that we have known you, and now on your 80th birthday you have become an icon of courage, resilience and wisdom that will inspire us and support us.

I hope that this birthday is especially happy—a reward for your determination to live life to its full, and that you will enjoy many more.

So may I wish you Happy Birthday Wilma with love and gratitude for being able to have you as a friend.

—Merle Bennett

■ The speech given by Merle Bennett at Wilma Goddards 80th Birthday party on Monday February 4th, 2020

Did you know?

The Guinness World Record for the time longest spend searching for the Loch Ness Monster, is held by Steve Feltham who camped at Loch Ness for 25 years.

Brain fibers lose 10% of their total length every decade. They can shrink even more so under acute stress.

Chewing gum boosts mental proficiency and is considered a better test aid than caffeine - but nobody knows why.

2020 Ravensthorpe & Districts Directory

■ Ravensthorpe CRC

Ravensthorpe Community Resource Centre is currently compiling the 2020 Ravensthorpe & Districts Directory, which will be distributed FREE to every household and business in Ravensthorpe, Hopetoun, Jerdacuttup, Munglinup and Lake King.

The 2020 edition will include email addresses, PO Box numbers and RMBs (all optional). Even if your details are unchanged since the last directory, please head online to www.ravensthorpe.crc.net.au/community-directory to submit your details for inclusion in the 2020 directory, OR you can complete a hardcopy form at:

- Ravensthorpe CRC
- Hopetoun CRC
- Meridian Agencies (Ravensthorpe Post Office)
- Hopetoun General Store (Post Office)
- Lake King Agencies (Post Office)
- Munglinup Roadhouse, or
- Jerdacuttup Primary School



An interactive day for you to get a solid understanding of how your business is set up, how you are performing and how to improve! Because no one cares about your business as much as you do!

BUSINESS STRUCTURES
How is your business set up?
How does this impact succession? Are your assets protected? How to minimise tax!

CASHFLOW
Budgeting 101: How a living budget works. How is your business performing? What drives profit?

CONSULTANTS' ADVICE
Bankers and Accountants in the room to answer questions. How do you get the most out of your advisers? Understand reports and ratios.



Rural hairdresser—making

Owner and operator of small boutique rural hairdressing salon in Hopetoun, Western Australia, Hair by Holly Wood has recently embarked on a humanitarian trip of a lifetime.

With an extensive volunteering portfolio including six years St John Ambulance, three years volunteer Fire and Emergency Service, countless years with the Winter Sports Association and numerous local community organisations - all while working full time in the salon, Holly still had room in her heart for one more gig, Hair Aid.

Hair Aid's first mission is to recruit and send volunteer hairdressers, from all around the world, to overseas locations to provide free haircutting training for people living in critical poverty.

Teams work directly with the people living on the street, or slum communities, or with ladies rescued from the sex trade and prostitution gangs. The volunteer hairdressers teach a five day cutting course - this gives the skill to cut five basic haircuts. This skill can then be used to start a micro-business and create an income to support themselves and their families.

Holly flew to Manila in the Philippines in January to meet the 27th Hair Aid International Projects team which comprised of 21 volunteer hairdressers from all around the globe plus CEO and founder of Hair Aid - Selina Tomasich. We were allocated a team



■ 27th International Project Hair Aid Team.

and a location for that week. My team included 27 yr old Emma Samuel from Scotland and two previous trainees from the Hair Aid Manila program Joan and Marichita who were a huge asset to the team.

Thousands of children wander around the city of Manila, victims of drugs and violence, totally cut off from their families. They survive by begging, stealing and prostituting themselves. My location for the week of Hair Aid

was ANAK- TNK (Tulay ng Kabataan) Foundation Inc. ANAK means child, TNK are the initials of the foundation for it is best known there as "Tulay ng Kabataan" which means bridge for the children. The priorities are education, health, nutrition and protection.

We were off to a rough start with my phone sounding an emergency alarm at 3:40am on day one of the program. The Taal volcano which had erupted on Sunday had escalated, showering ashfall and toxic gas emissions over the city of Manila.

We were grounded and instructed to stay inside until further notice. Within a few hours we were provided face masks and my location was the only one out of seven sites deemed safe to proceed to. We arrived and hit the ground running.

Throughout the week 30 trainees participated at my location - not one of them had ever held a pair of hairdressing scissors before. The determination, resilience and commitment to master what in Australia is a 3 year apprenticeship in four and a half days was mind blowing.

There were numerous hurdles—students who could not speak the English language, our models were children as young as one year old from the nursery, not enough water sprays, not enough models—but none of these stopped us from achieving what we had flown half



■ Holly (Australia), Marichita (Philippines), Emma (Scotland), Joan (Philippines).

the world of difference

way across the world to do.

I took to begging on the streets, begging the staff who had already had up to three haircuts in the last two days, our Hair Aid assistants even volunteered to get their hair cut, we called surrounding orphanages to bring us models because no haircuts means no graduation. Before I knew it we had fourteen small boys and fifteen special needs teenagers arrive at the same time and it was on.

Day five was graduation, this was a very special celebration which the community and trainees organised. I was totally unprepared for the depth of emotion which transpired at this event. It started with a prayer from a trainee, so moving, followed by the National Anthem.

Opening remarks were made then a simple song and dance was conducted by a group of the girls and then the boys performed a dance. We heard words of appreciation, tears and praise from a trainee who worked for the organisation at a girls drop in shelter, followed by the graduation ceremony and closed with words from Father Matthew.

It was absolute chaos, controlled chaos. I cried on more than one occasion, I put everything I had into these most amazing inspiring trainees and I had the absolute pleasure of awarding fourteen of the trainees with the Hair Aid Qualification, the scissor kit which comprised of hairdressing cape, pair



■ Holly demonstrating graduation haircut.



■ Graduation, ANAK-TNK Staff, Hair Aid Trainers and Trainees.

of scissors, four sectioning clips and a cutting comb.

Father Matthew said "What you think you have done is come here and teach the students how to cut hair but what you have really done is started the healing process for these children who have scars so deep inside their hearts you can't even begin to imagine" I had tears streaming down my face, my heart literally was breaking.

These adorable children with their big smiles and huge hearts who never once complained or showed any form of self-pity only displayed acts of kindness, words of appreciation and genuine respect. These children can only be saved by love. They are victims of the most awful things. It was at that exact moment I realized I have to come back.

If you are a hairdresser or beautician and a humanitarian at heart please get involved!

Within Australia, Hair Aid Community Cuts (HACC) facilitate free haircuts to the homeless, domestic violence sufferers, migrants or those just in suffering at a time of crisis at various locations in local communities all around Australia.

Sign up for an International Project. Hair Aid work in Manila, Cambodia, Indonesia and Thailand. Share your passion and expertise with the most vulnerable people living in critical poverty.

Keep an eye out for salons in your area participating in Hair Aid Global cut-a-thon on Sunday March 29th. This is an



■ Holly with trainee Rowella and models.

annual event and a major fundraiser which allows Hair Aid to continue great work providing training supporting both domestic and international projects. Book in for a haircut on that day knowing 100% of the proceeds will be donated to Hair Aid.

Every hairdresser should experience a Hair Aid International Project at least once in their career. This was by far the most enriching, rewarding and humbling experience of my life and I can't wait to go back.

Follow my journey on Instagram - @hairxhollywood or Facebook - Hair by Holly Wood. For more information on how you can help www.hairaid.org.au #changingtheworldonehaircutatatime

A day of prayer

World Day of Prayer, 2020–ZIMBABWE will be held at St Andrew's Anglican Church, Ravensthorpe on Friday March 6th at 10.30am.

This will be followed by a "Bring and Share Lunch". All Welcome

World Day of Prayer dates back to the 19th century and is a global ecumenical movement of informed prayer and prayerful action led by Christian women of many nations who call the faithful together to observe a common day of prayer each year on the first Friday in March.

More than 170 countries participate.

Through preparation and participation in this we can come to know how people of other countries, languages and cultures understand the biblical passages in their context.

We can hear their concerns and needs and can feel ourselves in solidarity with them. In this way it is possible to experience the richness of the Christian faith, as it grows deeper and broader in an international, ecumenical expression.

Through World Day of Prayer, Christians affirm that prayer and action are inseparable and that both have immeasurable influence in the world.

Happy birthday...



Long time resident of Ravensthorpe, Shirley Anderton celebrated her 90th birthday on February 9th in Albany with family and friends.

Farming News

FARMNOTE: Livestock and water salinity

Salt

The total amount of minerals in solution in water – the total soluble salts (TSS) – determines its suitability for livestock unless the water is polluted. Other criteria are generally of secondary importance.

The types of salts in water are mainly common salt (sodium chloride), calcium and magnesium bicarbonates, chlorides and sulphates. In the agricultural areas of the State, about three-quarters of the total soluble salts in water is common salt – a ratio similar to seawater. This ratio may vary in some coastal and pastoral areas.

Usually the only practical method available for using water with total salts above the recommended limits is by mixing it with fresher water. The proportions can be calculated from the total soluble salt contents of the two waters.

Changes in salinity

The salinity of a water source may change over the years and fluctuate with the seasons. Often, the salinity of dams, soaks and tanks increases during the summer because of evaporation. Stream salinity fluctuates seasonally because of rainfall. Immediately after the first rains, there is a slug of high salinity as salts left on the dry creekbed over summer are flushed downstream. The salinity then drops as the flow increases due to the influx of fresh run-off water. When the flow eases as summer approaches, salinity rises again.

Long-term increases in water salinity are usually associated with secondary salinity related to land clearing. Salinity often increases in dams,

soak and creeks after clearing because rising watertables lead to more saline seepage. Because of these changes following clearing, streams flowing from bushland areas are often fresher than nearby streams which have passed through cleared land.

Salinity in larger streams and rivers fluctuate seasonally, and in response to clearing, in a similar way to the small streams. In many major rivers e.g. the Blackwood River, there is a decrease in salinity as the distance from the headwaters increases, because of the inflow of fresher streams in the higher rainfall coastal areas.

Safety of water for stock

The quality of water which stock will drink varies greatly with circumstances and conditions. Usually stock become accustomed to the variations over the year, and suffer little effect. However, stock suddenly introduced to salty water may either refuse to drink it or suffer ill-effects.

Stock, thirsty from travelling or under extreme conditions may drink saline water for a short period. However, if used continuously, the saline water would cause ill-effects.

Limits of soluble salts in water for stock are listed in Table 1. These figures are a guide to maximum levels but should not be rigidly followed. At these maximum levels there should be no harmful effect on health, although production may fall and the animals should be watched carefully.

Water with less than 3,000 mg/L total salts can be used continuously by all livestock.

Where green feed is available, animals can tolerate more saline water than when 'bush' or

'scrub' is the only feed.

Older dry stock can tolerate water of higher salinity than young or lactating stock.

In isolated circumstances, magnesium has been found at levels which affect a recommendation on total salts alone. A test for magnesium may be warranted when stock are scouring on drinking water with more than 3000 mg/L total salts.

Cloudiness of water due to clay suspension is not normally harmful to stock. However, bacterial or algal toxins found in stock water may cause harm. Advice on these aspects is available in Farmnotes 42/2004 and 44/2004.

SIGNS OF SALT POISONING:

Sheep and cattle

The main signs of salt poisoning in sheep and cattle are excessive thirst, abdominal pain, loss of appetite, diarrhoea and increased urination. Later there is general weakness, muscular tremors, rapid loss of condition, and eventual paralysis. The animal may go into a coma, and die within 6 to 24 hours.

Poultry

Affected fowls show great thirst, weakness, a thick discharge from the nostrils and respiratory distress. There is progressive inability to walk and birds may fall from their perches. Death is apparently caused by asphyxia due to loss of power over the respiratory muscles.

Treatment

Remove affected animals from the salty water to a fresh water supply. Initially fresh water should be restricted to small amounts, frequently.

FARMNOTE: Livestock and water salinity

■ From Page 20

Unlimited access to fresh water may result in sudden increase in the number of affected animals.

Severely affected livestock may need to be drenched by mouth with fresh water. If further treatment is still required consult your veterinarian. If death of stock does occur, and you suspect salt poisoning, contact your local consulting veterinarian to investigate and make an accurate diagnosis.

Samples for analysis

Samples should be at least 500 mL in a clear glass or plastic bottle, with the bottle and cap previously rinsed three times with the water to be sampled. Use a clean screw cap, cork or stopper to seal the bottle, and mark with the sender's name, address and date of sampling.

Include a letter stating the proposed use of the water and any problems that have been found, so that the appropriate tests can be made. The water source such as dam or bore, and the depth from which the sample was taken, should be provided.

Any district office of the Department of Agriculture and Food will analyse water for its salt content or advise you of a local company which can assist you. However, the Chemistry Centre is the main State Government authority responsible for analysis of water. Advice on other problems and tests are available. Both the Department and the Chemistry Centre charge for testing services.

Samples for bacterial contamination are tested by the Pathwest and must be collected under sterile conditions by a health surveyor.

Results of analysis

Results of water analyses are expressed in milligrams of total salt per litre (mg/L) or millisiemens per meter (mS/m). For water, milligrams per litre are the same as parts per million (ppm) or TSS for most practical purposes.

Reaction - acidity or alkalinity

Neutral or slightly alkaline water is satisfactory for all uses. Water which is naturally slightly acid is not harmful to humans, stock or plants but may corrode pumps, metallic pipes and tanks. Acidity can be corrected by

Units

A variety of units are used for measures of salinity. EC is measured in Siemens, the international standard (SI) unit for conductivity. The standard unit used by DAFWA to express soil and water salinity is milliSiemens per metre (mS/m).

The Australian standard for water salinity is microSiemens per centimetre ($\mu\text{S}/\text{cm}$) or milligrams per litre (mg/L) and for soil salinity, deciSiemens per metre (dS/m).

Other commonly used historical units are parts per million (ppm), which can be thought of as the same as milligrams per litre (mg/L), osmotic potential (OP), % Total Soluble Salts and grains per gallon (gr/gal).

Conversions

Approximate conversion factors for relating salinity measures are listed in Table x. EC meters will generally display a reading as either microSiemens or milliSiemens per centimetre and some meters will interchange the units depending on how salty the sample is. To convert to milliSiemens per metre (mS/m), divide microSiemens per centimetre ($\mu\text{S}/\text{cm}$) by 10 or multiply milliSiemens per centimetre (mS/cm) by 100.

Table x: Standard conversion factors for various salinity measures

electrical conductivity (mS/m)	X 5.5	= total dissolved solids (mg/L)
electrical conductivity (mS/m)	X 0.01	= electrical conductivity (dS/m)
electrical conductivity (mS/m)	X 0.01	= electrical conductivity (mS/cm)
electrical conductivity (mS/m)	X 10	= electrical conductivity ($\mu\text{S}/\text{cm}$)
electrical conductivity (mS/m)	X 0.385	= total dissolved solids (gr/gal)

aeration or by adding alkaline substances such as lime.

Further information

Further information is available from the Department of Agriculture and Food or from the Chemistry Centre, 125 Hay Street, East Perth 6004 on telephone 9222 3177

Related Farmnotes include:

42/2004 'Clearing cloudy or coloured water' 44/2004 'Emergency chlorination of farm water' Acknowledgement

Part of this Farmnote is reprinted from the Chemistry Centre's Bulletin 1/74 'Water for domestic, agricultural and general use in Western Australia'.

Salt Measurement Conversions

Electrical Conductivity (mS/m)	mg/L	ppm	gr/gal	Water Salinity
0.01	5.5	5.5	0.12	
0.02	11.0	11.0	0.24	
0.03	16.5	16.5	0.36	
0.04	22.0	22.0	0.48	
0.05	27.5	27.5	0.60	
0.06	33.0	33.0	0.72	
0.07	38.5	38.5	0.84	
0.08	44.0	44.0	0.96	
0.09	49.5	49.5	1.08	
0.10	55.0	55.0	1.20	
0.11	60.5	60.5	1.32	
0.12	66.0	66.0	1.44	
0.13	71.5	71.5	1.56	
0.14	77.0	77.0	1.68	
0.15	82.5	82.5	1.80	
0.16	88.0	88.0	1.92	
0.17	93.5	93.5	2.04	
0.18	99.0	99.0	2.16	
0.19	104.5	104.5	2.28	
0.20	110.0	110.0	2.40	
0.21	115.5	115.5	2.52	
0.22	121.0	121.0	2.64	
0.23	126.5	126.5	2.76	
0.24	132.0	132.0	2.88	
0.25	137.5	137.5	3.00	
0.26	143.0	143.0	3.12	
0.27	148.5	148.5	3.24	
0.28	154.0	154.0	3.36	
0.29	159.5	159.5	3.48	
0.30	165.0	165.0	3.60	
0.31	170.5	170.5	3.72	
0.32	176.0	176.0	3.84	
0.33	181.5	181.5	3.96	
0.34	187.0	187.0	4.08	
0.35	192.5	192.5	4.20	
0.36	198.0	198.0	4.32	
0.37	203.5	203.5	4.44	
0.38	209.0	209.0	4.56	
0.39	214.5	214.5	4.68	
0.40	220.0	220.0	4.80	
0.41	225.5	225.5	4.92	
0.42	231.0	231.0	5.04	
0.43	236.5	236.5	5.16	
0.44	242.0	242.0	5.28	
0.45	247.5	247.5	5.40	
0.46	253.0	253.0	5.52	
0.47	258.5	258.5	5.64	
0.48	264.0	264.0	5.76	
0.49	269.5	269.5	5.88	
0.50	275.0	275.0	6.00	
0.51	280.5	280.5	6.12	
0.52	286.0	286.0	6.24	
0.53	291.5	291.5	6.36	
0.54	297.0	297.0	6.48	
0.55	302.5	302.5	6.60	
0.56	308.0	308.0	6.72	
0.57	313.5	313.5	6.84	
0.58	319.0	319.0	6.96	
0.59	324.5	324.5	7.08	
0.60	330.0	330.0	7.20	
0.61	335.5	335.5	7.32	
0.62	341.0	341.0	7.44	
0.63	346.5	346.5	7.56	
0.64	352.0	352.0	7.68	
0.65	357.5	357.5	7.80	
0.66	363.0	363.0	7.92	
0.67	368.5	368.5	8.04	
0.68	374.0	374.0	8.16	
0.69	379.5	379.5	8.28	
0.70	385.0	385.0	8.40	
0.71	390.5	390.5	8.52	
0.72	396.0	396.0	8.64	
0.73	401.5	401.5	8.76	
0.74	407.0	407.0	8.88	
0.75	412.5	412.5	9.00	
0.76	418.0	418.0	9.12	
0.77	423.5	423.5	9.24	
0.78	429.0	429.0	9.36	
0.79	434.5	434.5	9.48	
0.80	440.0	440.0	9.60	
0.81	445.5	445.5	9.72	
0.82	451.0	451.0	9.84	
0.83	456.5	456.5	9.96	
0.84	462.0	462.0	10.08	
0.85	467.5	467.5	10.20	
0.86	473.0	473.0	10.32	
0.87	478.5	478.5	10.44	
0.88	484.0	484.0	10.56	
0.89	489.5	489.5	10.68	
0.90	495.0	495.0	10.80	
0.91	500.5	500.5	10.92	
0.92	506.0	506.0	11.04	
0.93	511.5	511.5	11.16	
0.94	517.0	517.0	11.28	
0.95	522.5	522.5	11.40	
0.96	528.0	528.0	11.52	
0.97	533.5	533.5	11.64	
0.98	539.0	539.0	11.76	
0.99	544.5	544.5	11.88	
1.00	550.0	550.0	12.00	

NOTE: EC is quoted as a measure of salinity in *Electrical Conductivity*. EC is a measure of salinity and is represented by the first three columns of the chart on the first page of all EC measures. EC is also aligned with the standard measures of salinity and alkalinity.

Water Salinity

SALT

NOTE: EC is quoted as a measure of salinity in *Electrical Conductivity*. EC is a measure of salinity and is represented by the first three columns of the chart on the first page of all EC measures. EC is also aligned with the standard measures of salinity and alkalinity.

Water Salinity

SALT

NOTE: EC is quoted as a measure of salinity in *Electrical Conductivity*. EC is a measure of salinity and is represented by the first three columns of the chart on the first page of all EC measures. EC is also aligned with the standard measures of salinity and alkalinity.

Water Salinity

SALT

NOTE: EC is quoted as a measure of salinity in *Electrical Conductivity*. EC is a measure of salinity and is represented by the first three columns of the chart on the first page of all EC measures. EC is also aligned with the standard measures of salinity and alkalinity.

Water Salinity

SALT

NOTE: EC is quoted as a measure of salinity in *Electrical Conductivity*. EC is a measure of salinity and is represented by the first three columns of the chart on the first page of all EC measures. EC is also aligned with the standard measures of salinity and alkalinity.

Water Salinity

SALT

NOTE: EC is quoted as a measure of salinity in *Electrical Conductivity*. EC is a measure of salinity and is represented by the first three columns of the chart on the first page of all EC measures. EC is also aligned with the standard measures of salinity and alkalinity.

Water Salinity

SALT

NOTE: EC is quoted as a measure of salinity in *Electrical Conductivity*. EC is a measure of salinity and is represented by the first three columns of the chart on the first page of all EC measures. EC is also aligned with the standard measures of salinity and alkalinity.

Water Salinity

SALT

NOTE: EC is quoted as a measure of salinity in *Electrical Conductivity*. EC is a measure of salinity and is represented by the first three columns of the chart on the first page of all EC measures. EC is also aligned with the standard measures of salinity and alkalinity.

Water Salinity

SALT

NOTE: EC is quoted as a measure of salinity in *Electrical Conductivity*. EC is a measure of salinity and is represented by the first three columns of the chart on the first page of all EC measures. EC is also aligned with the standard measures of salinity and alkalinity.

Water Salinity

SALT

NOTE: EC is quoted as a measure of salinity in *Electrical Conductivity*. EC is a measure of salinity and is represented by the first three columns of the chart on the first page of all EC measures. EC is also aligned with the standard measures of salinity and alkalinity.

Water Salinity

SALT

NOTE: EC is quoted as a measure of salinity in *Electrical Conductivity*. EC is a measure of salinity and is represented by the first three columns of the chart on the first page of all EC measures. EC is also aligned with the standard measures of salinity and alkalinity.

Water Salinity

SALT

NOTE: EC is quoted as a measure of salinity in *Electrical Conductivity*. EC is a measure of salinity and is represented by the first three columns of the chart on the first page of all EC measures. EC is also aligned with the standard measures of salinity and alkalinity.

Water Salinity

SALT

NOTE: EC is quoted as a measure of salinity in *Electrical Conductivity*. EC is a measure of salinity and is represented by the first three columns of the chart on the first page of all EC measures. EC is also aligned with the standard measures of salinity and alkalinity.

Water Salinity

SALT

NOTE: EC is quoted as a measure of salinity in *Electrical Conductivity*. EC is a measure of salinity and is represented by the first three columns of the chart on the first page of all EC measures. EC is also aligned with the standard measures of salinity and alkalinity.

Water Salinity

SALT

NOTE: EC is quoted as a measure of salinity in *Electrical Conductivity*. EC is a measure of salinity and is represented by the first three columns of the chart on the first page of all EC measures. EC is also aligned with the standard measures of salinity and alkalinity.

Water Salinity

SALT

NOTE: EC is quoted as a measure of salinity in *Electrical Conductivity*. EC is a measure of salinity and is represented by the first three columns of the chart on the first page of all EC measures. EC is also aligned with the standard measures of salinity and alkalinity.

Water Salinity

SALT

NOTE: EC is quoted as a measure of salinity in *Electrical Conductivity*. EC is a measure of salinity and is represented by the first three columns of the chart on the first page of all EC measures. EC is also aligned with the standard measures of salinity and alkalinity.

Water Salinity

SALT

NOTE: EC is quoted as a measure of salinity in *Electrical Conductivity*. EC is a measure of salinity and is represented by the first three columns of the chart on the first page of all EC measures. EC is also aligned with the standard measures of salinity and alkalinity.

Water Salinity

SALT

NOTE: EC is quoted as a measure of salinity in *Electrical Conductivity*. EC is a measure of salinity and is represented by the first three columns of the chart on the first page of all EC measures. EC is also aligned with the standard measures of salinity and alkalinity.

Water Salinity

SALT

NOTE: EC is quoted as a measure of salinity in *Electrical Conductivity*. EC is a measure of salinity and is represented by the first three columns of the chart on the first page of all EC measures. EC is also aligned with the standard measures of salinity and alkalinity.

Water Salinity

SALT

NOTE: EC is quoted as a measure of salinity in *Electrical Conductivity*. EC is a measure of salinity and is represented by the first three columns of the chart on the first page of all EC measures. EC is also aligned with the standard measures of salinity and alkalinity.

Water Salinity

SALT

NOTE: EC is quoted as a measure of salinity in *Electrical Conductivity*. EC is a measure of salinity and is represented by the first three columns of the chart on the first page of all EC measures. EC is also aligned with the standard measures of salinity and alkalinity.

Water Salinity

SALT

NOTE: EC is quoted as a measure of salinity in *Electrical Conductivity*. EC is a measure of salinity and is represented by the first three columns of the chart on the first page of all EC measures. EC is also aligned with the standard measures of salinity and alkalinity.

Water Salinity

SALT

NOTE: EC is quoted as a measure of salinity in *Electrical Conductivity*. EC is a measure of salinity and is represented by the first three columns of the chart on the first page of all EC measures. EC is also aligned with the standard measures of salinity and alkalinity.

Water Salinity

SALT

NOTE: EC is quoted as a measure of salinity in *Electrical Conductivity*. EC is a measure of salinity and is represented by the first three columns of the chart on the first page of all EC measures. EC is also aligned with the standard measures of salinity and alkalinity.

Water Salinity

SALT

NOTE: EC is quoted as a measure of salinity in *Electrical Conductivity*. EC is a measure of salinity and is represented by the first three columns of the chart on the first page of all EC measures. EC is also aligned with the standard measures of salinity and alkalinity.

Water Salinity

SALT

NOTE: EC is quoted as a measure of salinity in *Electrical Conductivity*. EC is a measure of salinity and is represented by the first three columns of the chart on the first page of all EC measures. EC is also aligned with the standard measures of salinity and alkalinity.

Water Salinity

SALT

NOTE: EC is quoted as a measure of salinity in *Electrical Conductivity*. EC is a measure of salinity and is represented by the first three columns of the chart on the first page of all EC measures. EC is also aligned with the standard measures of salinity and alkalinity.

Water Salinity

SALT

NOTE: EC is quoted as a measure of salinity in *Electrical Conductivity*. EC is a measure of salinity and is represented by the first three columns of the chart on the first page of all EC measures. EC is also aligned with the standard measures of salinity and alkalinity.

Water Salinity

SALT

NOTE: EC is quoted as a measure of salinity in *Electrical Conductivity*. EC is a measure of salinity and is represented by the first three columns of the chart on the first page of all EC measures. EC is also aligned with the standard measures of salinity and alkalinity.

Water Salinity

SALT

NOTE: EC is quoted as a measure of salinity in *Electrical Conductivity*. EC is a measure of salinity and is represented by the first three columns of the chart on the first page of all EC measures. EC is also aligned with the standard measures of salinity and alkalinity.

Water Salinity

SALT

NOTE: EC is quoted as a measure of salinity in *Electrical Conductivity*. EC is a measure of salinity and is represented by the first three columns of the chart on the first page of all EC measures. EC is also aligned with the standard measures of salinity and alkalinity.

Water Salinity

SALT

NOTE: EC is quoted as a measure of salinity in *Electrical Conductivity*. EC is a measure of salinity and is represented by the first three columns of the chart on the first page of all EC measures. EC is also aligned with the standard measures of salinity and alkalinity.

Water Salinity

SALT

NOTE: EC is quoted as a measure of salinity in *Electrical Conductivity*. EC is a measure of salinity and is represented by the first three columns of the chart on the first page of all EC measures. EC is also aligned with the standard measures of salinity and alkalinity.

Water Salinity

SALT

NOTE: EC is quoted as a measure of salinity in *Electrical Conductivity*. EC is a measure of salinity and is represented by the first three columns of the chart on the first page of all EC measures. EC is also aligned with the standard measures of salinity and alkalinity.

Water Salinity

SALT

NOTE: EC is quoted as a measure of salinity in *Electrical Conductivity*. EC is a measure of salinity and is represented by the first three columns of the chart on the first page of all EC measures. EC is also aligned with the standard measures of salinity and alkalinity.

Water Salinity

SALT

NOTE: EC is quoted as a measure of salinity in *Electrical Conductivity*. EC is a measure of salinity and is represented by the first three columns of the chart on the first page of all EC measures. EC is also aligned with the standard measures of salinity and alkalinity.

Water Salinity

SALT

NOTE: EC is quoted as a measure of salinity in *Electrical Conductivity*. EC is a measure of salinity and is represented by the first three columns of the chart on the first page of all EC measures. EC is also aligned with the standard measures of salinity and alkalinity.

Water Salinity

SALT

NOTE: EC is quoted as a measure of salinity in *Electrical Conductivity*. EC is a measure of salinity and is represented by the first three columns of the chart on the first page of all EC measures. EC is also aligned with the standard measures of salinity and alkalinity.

Water Salinity

SALT

NOTE: EC is quoted as a measure of salinity in *Electrical Conductivity*. EC is a measure of salinity and is represented by the first three columns of the chart on the first page of all EC measures. EC is also aligned with the standard measures of salinity and alkalinity.

Water Salinity

SALT

NOTE: EC is quoted as a measure of salinity in *Electrical Conductivity*. EC is a measure of salinity and is represented by the first three columns of the chart on the first page of all EC measures. EC is also aligned with the standard measures of salinity and alkalinity.

Water Salinity

SALT

NOTE: EC is quoted as a measure of salinity in *Electrical Conductivity*. EC is a measure of salinity and is represented by the first three columns of the chart on the first page of all EC measures. EC is also aligned with the standard measures of salinity and alkalinity.

Water Salinity

SALT

NOTE: EC is quoted as a measure of salinity in *Electrical Conductivity*. EC is a measure of salinity and is represented by the first three columns of the chart on the first page of all EC measures. EC is also aligned with the standard measures of salinity and alkalinity.

Water Salinity

SALT

NOTE: EC is quoted as a measure of salinity in *Electrical Conductivity*. EC is a measure of salinity and is represented by the first three columns of the chart on the first page of all EC measures. EC is also aligned with the standard measures of salinity and alkalinity.

Water Salinity

SALT

NOTE: EC is quoted as a measure of salinity in *Electrical Conductivity*. EC is a measure of salinity and is represented by the first three columns of the chart on the first page of all EC measures. EC is also aligned with the standard measures of salinity and alkalinity.

Water Salinity

SALT

NOTE: EC is quoted as a measure of salinity in *Electrical Conductivity*. EC is a measure of salinity and is represented by the first three columns of the chart on the first page of all EC measures. EC is also aligned with the standard measures of salinity and alkalinity.

Water Salinity

SALT

NOTE: EC is quoted as a measure of salinity in *Electrical Conductivity*. EC is a measure of salinity and is represented by the first three columns of the chart on the first page of all EC measures. EC is also aligned with the standard measures of salinity and alkalinity.

Water Salinity

SALT

NOTE: EC is quoted as a measure of salinity in *Electrical Conductivity*. EC is a measure of salinity and is represented by the first three columns of the chart on the first page of all EC measures. EC is also aligned with the standard measures of salinity and alkalinity.

Water Salinity

SALT

NOTE: EC is quoted as a measure of salinity in *Electrical Conductivity*. EC is a measure of salinity and is represented by the first three columns of the chart on the first page of all EC measures. EC is also aligned with the standard measures of salinity and alkalinity.

Water Salinity

SALT

NOTE: EC is quoted as a measure of salinity in *Electrical Conductivity*. EC is a measure of salinity and is represented by the first three columns of the chart on the first page of all EC measures. EC is also aligned with the standard measures of salinity and alkalinity.

Water Salinity

SALT

NOTE: EC is quoted as a measure of salinity in *Electrical Conductivity*. EC is a measure of salinity and is represented by the first three columns of the chart on the first page of all EC measures. EC is also aligned with the standard measures of salinity and alkalinity.

Water Salinity

SALT

NOTE: EC is quoted as a measure of salinity in *Electrical Conductivity*. EC is a measure of salinity and is represented by the first three columns of the chart on the first page of all EC measures. EC is also aligned with the standard measures of salinity and alkalinity.

Water Salinity

SALT

NOTE: EC is quoted as a measure of salinity in *Electrical Conductivity*. EC is a measure of salinity and is represented by the first three columns of the chart on the first page of all EC measures. EC is also aligned with the standard measures of salinity and alkalinity.

Water Salinity

SALT

NOTE: EC is quoted as a measure of salinity in *Electrical Conductivity*. EC is a measure of salinity and is represented by the first three columns of the chart on the first page of all EC measures. EC is also aligned with the standard measures of salinity and alkalinity.

Water Salinity

SALT

NOTE: EC is quoted as a measure of salinity in *Electrical Conductivity*. EC is a measure of salinity and is represented by the first three columns of the chart on the first page of all EC measures. EC is also aligned with the standard measures of salinity and alkalinity.

Water Salinity

SALT

NOTE: EC is quoted as a measure of salinity in *Electrical Conductivity*. EC is a measure of salinity and is represented by the first three columns of the chart on the first page of all EC measures. EC is also aligned with the standard measures of salinity and alkalinity.

Water Salinity

2020 Free-Lance Journalist Programme

THE COMMUNITY SPIRIT IS PLEASED TO FOSTER A FREELANCE JOURNALIST WITHIN THE REGION

This applies to all members of the community who currently reside in the district. Our journalist will be selected by judgement of ability based on the best submission of a news or feature article that is to do with:

- a club;
- a community organisation;
- an environmental subject or concern;
- a person/s; or
- a place in our district.

The length of the article is up to the individual, but it must cover the basic elements of a news or feature article, including:

- A catchy title;
- The key information (Who, what, when, where, why and how); and
- A photo or image to support the text.

DUE DATE FOR SUBMISSION IS FEBRUARY 28, 2020.

The winning article will be published in the Community Spirit and the winner will be notified on the same day.

The winner of the contest will then be offered an opportunity to submit monthly articles to the Community Spirit on a topic of their choice. As part of the free-lance journalist programme, the successful applicant will also receive:

- A \$50 payment per acceptable article submission
- Coaching in writing skills to enhance journalist skills
- Opportunity to work behind the scenes to see how a local paper is compiled



Submissions should be sent to
contributions@cospirit.net

Any enquiries to:
Jeanette Denham 0427 691 326

Sport News

Excitement in the air as improvements take shape

■ Ravensthorpe Hand Gun Club

The Ravensthorpe Handgun Club has started the season with excitement in the air as the long awaited developments to the range are visibly taking shape.

Thanks to successful grants funding from the Ravensthorpe Hopetoun Future Fund, Shire of Ravensthorpe and Sport and Recreation we are able to start developing the 100 metre range to allow for more rifle matches, both rim-fire and centre-fire up to .223 calibre. The funding will allow for earthworks, a new covered and concreted 100 metre firing line complete with bench rests and target infrastructure.

Our existing 50 and 25 metre ranges will also have minor upgrades to meet required specifications and allow us to compete in more handgun matches. We will also be reintroducing shotgun clay target shooting.

For those not familiar with our club we meet every second Sunday and currently shoot handguns both revolver and semi-auto's from .22 up to .357 calibre as well as the .22 LR field rifle match.

Our next shoot is on February 23rd at 9am at the range, 600 metres from the roundabout on the Hopetoun Road. Visitors are welcome to drop in and check out what we do and our members will be happy to answer questions you may have if you are interested in trying out the exciting sport of target shooting.

—TH

Scores for February 9th:

Rimfire Revolver—Trina 534.14, Rosco 520.10, Bill 497.8, Rob 413.1, Magid 354, Ron H 261.6, Lora 207.

Rimfire Mandar—Bill 468.25, Magid 448.7, Sandi 412.5, Kat 390.5, Ron H 390.5, Lora 370.6, Rob 335.3, Ross 331.9.

Centrefire Revolver—Bill 489.8, Magid 177.3.

Centrefire Mandar—Bill 456.13, Trina 454.12, Ron H 391.



Libertyrural
 DISTRIBUTOR
**NEWDEGATE
 STOCK &
 TRADING**
 Ph: 9871 1556
 MOB: 0428 711 556
 24 hours fuel at Newdegate
**FOR ALL ON FARM
 DELIVERIES OF FUEL**

Busy summer of bowls

■ Hopetoun Bowls

The first of our sponsored Sunday's was played on December 29th—Mixed Triples, sponsored by Daryl Panizza WFI and Dawson's Funeral Services of Narrogin with 10 teams playing five games of three bowls of 65 mins on the clock.

The winners with 13 pts were Alec Woods, Fred Payne and Michelle Stephen. Second with 9 pts +1 was Des Barr, Alan Corby and Pam McInnes, third with 9 pts-7 were Brad, Micheal and Tiffany Stephen. Fourth with 8 pts were Darryl Quinn, Frank Green and Jeanette Sounis.

The last draw of our lotto was on December 28th with the winners being 33 Michelle Tancred and 5 Madeline Bell. Thank you to everyone that participated in the draw.

Mixed Scroungers
December 17th with 19



■ Fred, Michael, Tiffany, Alec, Alan, Brad, Michelle, Darryl, Frank, Jeanette, Des, Pam.

players sponsored by Jeanette and Bob Sounis. Rink winners Ron Davis, Alec Woods, Coral Grant, Margot Hawkins, Alan Corby, Darryl Quinn.

Winners were Alec and Davo.

January 1st sponsored by the Club with 26 players. Rink winners Peter Walker, Coral Grant, Fred Payne,

Margot Hawkins, Alec Woods, Ron Davis, Caroline Carter and Frank Green. Winners were Coral and Peter.

■ Continued Page 25

Stumped!

■ Cricket

Hopetoun batted first on February 1st in a 2020 premiership 40 over game. They made a healthy 170 runs.

Harry Crabbe top scored with 61 not out. T Bailey 19, J Cosgrove 15 and N Biddulph 16 not out with other good scores.

So the chase was on and achieved, but only in the 29th over. Joel Ebert was superb with an unbeaten 92.

Cameron Tink assisted him survive the last few overs.

The only other good score for Ravensthorpe was Simon Duncan with a patient 27.

Best Bowling for Hopetoun was Fred Payne with 2/10 and Jayde Sinclair 2/14.

Best for Ravensthorpe was Simon Duncan 2/19 and D Macleay 2/39.

Both teams are keen to get more players, so roll up and test your skills.

—R Daw



Busy summer of bowls

■ From Page 24

January 8th with 23 players, sponsored by Stan King. Rink winners Brian Button (Zip) Coral Grant, Pam McInnes, Alec Woods, John Goddard, Peter Walker and Lindsay Chambers. Winners Zip and Alec.

January 15th with 22 players, sponsored by Frank Green. Rink winners Bub McGlinn, Bob Sounis, Alec Woods, Des Barr, Fred Payne Ian Hockridge and Aaron Hall. The winners were Alec and Ian, a visitor from Karlgarin. Players then enjoyed a hamburger tea supplied by Frank.

January 22nd with 12 players, sponsored by Jan and Darryl Quinn. Rink winners Joe Jones, Darryl Quinn, John and Lance Goddard. The winner being Lance.

January 29th with 15 players sponsored by Bill Clark. Rink winners Lance Goddard, Bub McGlinn, Alan Corby, Joe Jones and Coral Grant. Winners 1st Coral, equal second Lance and Alan.

Sunday 5th 17 players played Social Bowls on a very hot afternoon.

Sunday 19th was the Port 1000, sponsored by Christine and Michael Gianni with 14 teams of four playing three games of 14 ends. Winners with 9 pts +40 were Peter Walker (Newdegate), Warrick and Pam McInnes (Kulin) and Aaron Hall (Dowerin). Runners up with 9 pts +32 Darryl Quinn, Margo Hawkins, Alan Corby (Hopetoun) and Ian Hockridge (Karlgarin), third with 9 pts +22 Ted and Rachel Young, David and Shelley Smith (Condingup), fourth with 6 pts +14 Rusty Lee, Frank Green (Hopetoun) Jaco and Maretha Swart (Lake Varley).

Saturday 25th was our Cancer Day, sponsored by Mary and Bub McGlinn, Lance Goddard (Hopetoun Painting Services) and Denise and Rod Edwards (Ravensthorpe).

The day started at 9.30 with 28 people playing 12 ends of three bowl pairs with the winners being Rod Edwards and Leonie McNamara, runners up Bob Sounis and Ken Norman, Toucher Denise Edwards.

After lunch another game of 12 ends. Winners Joe Jones and Margot Hawkins, runners up Rod Edwards and Kevin Herbert/Ken Cook, Toucher Judy Walker, Spider Caroline Carter. Then it was two games of fun bowls of six ends with members going into the shed to use the old biased bowls playing two each.

Winners third game Bub McGlinn and Syd Walker, runners up Tony Keen and Margot Hawkins, Toucher Margot, fourth game John Goddard and Leonie, runners up Rusty Lee and Di Chambers, Toucher Rusty.

Throwing money to the bottle was won by Rusty who promptly donated it back. Our delightful auctioneer Herbie then auctioned four mystery parcels raising \$1420, and mystery bottles, fines for wrong biases and at the end of the day \$2001 was raised by members with the Club making it up to \$2300, making a great donation to the Cancer Council—well done everyone.

—Pam Cousins, Ladies President

Forthcoming Events:

February 15-16th—Men's and Ladies Championship Fours

February 19th and 26th—Ladies Bowls 8.45am; Mixed Scroungers 1pm

February 22nd—Hovara at Ravensthorpe

February 23rd—WFI at Esperance

February 25th—Ladies League Triples Condingup.

February 28th—Men's Country Week

March 3rd—Ladies Pennants v Condingup.



■ Rusty, Maretha, Frank and Jaco.



■ Ian, Alan, Darryl, Margot.



■ Pam, Warwick, Peter, Aaron.

Community Noticeboard

The Community Spirit is your community based newspaper, covering local news and events.

We are pleased to support local events

TERMS & CONDITIONS:

- Design must be **completed by client** and submitted as a JPEG or PDF.
- Are to be for **FREE Local Community Events** only.
- To be placed on Notice Board at Community Spirit discretion.
- Notice Board is free providing there is to be a follow up article for the paper after the event. If no article provided then the group will not be allowed this space again.
- There is limited area for the Notice Board so first in will get the space.

For further information please contact the Community Spirit Communications Manager on 0408 840 447

Little Beat-Bop



Hopetoun Community Resource Centre



WHAT? Fun action with music and instruments

WHERE AND WHEN? Hopetoun Community Centre, rear foyer
Mondays 9:15-9:45am
Starts Feb 3rd for School Term 1 (9wks)

WHO? Fives and under with a fun-loving adult

Cost: \$45.00 for 5 classes or
\$67.50 for all 9 classes. Registration required.
Free participation for under twos.

Tel: 9838 3062 or go to www.hopetounwa.com to book your spot

HEAVY VEHICLE PILOT/ESCORT LICENSE COURSES

Conducted by COMPETENT SOLUTIONS of WYALKATCHEM

CONTACT: JIM DAVIDSON on 0448050295

EMAIL: competentsolutions@outlook.com

Monday 17th & Tuesday 18th February 2020



- Nationally Accredited and Main Roads WA approved courses that include: Agricultural Machinery rules and requirements
- Nationally Accredited Heavy Vehicle Pilot/Escort Qualification including:

- TLIC 3010 Pilot/Escort Oversize/Overmass Loads
- TLIB 0002 Carry Out Vehicle Inspection
- TLIE 3009 Use Pilot and Escort Communication
- TLIF Coordinate Breakdowns and Emergencies
- TLIF Control Traffic as a Pilot Vehicle Operator
- Bridge Supervision as required by WA Main Roads (main roads approved)
- Movement of Agricultural Machinery on Public Roads (main roads approved)
- This course is two days of theory and assessment
- And Practical Assessments in groups for approx. two hours on Day 3.
- Why choose Competent Solutions of Wyalkatchem?
- We live in the wheatbelt at Wyalkatchem.
- Our trainers have years of agricultural and transport experience and do the job regularly.
- Our training is relevant to your operations and experience. We have done what you do.
- ONLY Competent Solutions fully cover the AGRICULTURAL PILOT requirements.
- We LIVE in the WHEAT BELT, We DO the job YOU do, We stay UP TO DATE at all times.
- Agricultural movements have DIFFERENT rules to General Transport oversize.
- Ring Jim Davidson on 0448050295 with any queries at any time.

If you are moving Agricultural Machinery on an ORANGE zoned road (Main Roads and Regional Roads of Significance) you now MUST have an Accredited Licensed Pilot either on the Lead Tractor or in the LEAD pilot vehicle. (www.mainroads.gov.wa > HVS > Agricultural Vehicles)

Looking for the
**Community Transport Vehicle
Coordinator number**
to book your next specialist appointment?

Call 0439 335 147

Did you know?

Per capita, the happiest countries in the world also rank highest in terms of consumers of antidepressants.

Even though Irish is the official language of Ireland, Polish is more widely spoken.

There's a bar in Yukon that serves a "Sourtoe cocktail". It consists of a shot of whisky with a human toe floating in the glass. An estimated 60,000 people have had it.

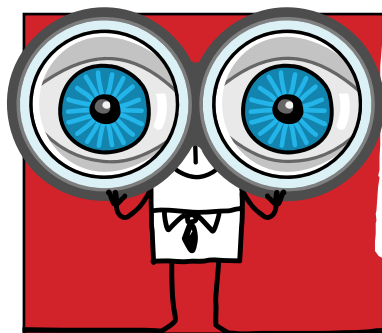
The Stockholm archipelago has more islands than the

Pacific Ocean at around 30,000.

Pope Francis has been given many extravagant gifts over the years, and one of them was a Harley-Davidson motorcycle. However, rather than keeping it for his own pleasure and adventures, he sold it off and used the money to benefit homeless people.

In Japan, Domino's started testing pizza delivery via reindeer in 2016.

The motto on the United Kingdom's Royal Coat of Arms is in French. The motto is "Dieu et mon droit", which means "God and my right".



Look LOCAL

Most phone numbers, email and web addresses on this page are hyperlinked.
Just click on it on your smart device to contact the business.

AGRICULTURAL SUPPLIES

RAVENSTHORPE AGENCIES

BERNIE & ROZ BIDDULPH
44 Morgans Street (PO Box 126)
RAVENSTHORPE WA 6346

PHONE: (08) 9838 1236

FAX: (08) 9838 1206

MOBILE: 0429 381 236

EMAIL: ravyag@westnet.com.au



Fencing ▶ Batteries ▶ Oils & Lubricants ▶ Chemicals & Fertilisers
▶ Water Pumps ▶ Water Tanks ▶ Water Pipe & Fittings
▶ Dog & Cat Food ▶ Workwear & Boots AND HEAPS MORE!

HAULAGE

HALLAMS CARTAGE CONTRACTORS



Specialising in:

- Water Cartage • Grain Carting
- General Freight • Wool Cartage
- Side Tippers • Gravel & Sand
- Roller Hire • Low Loader Hire

Kevin Ph: 0429 049 114
email: hallamscartage1@bigpond.com

PLUMBING



0407 358 983

PL 923 & GF 002820

AUTO ELECTRICIAN

Hinchys Mobile Auto Electrics

High Quality workmanship on light vehicles, trucks, marine, earthmoving and farming equipment

James Hinch
0408 118 180
hinchysmobileelectrics@hotmail.com

LEGAL

LANSSELL LEGAL

FOR ANY LEGAL ISSUE CONCERNING
MEMBERS OF THE LOCAL COMMUNITY.

Monthly visits and 24/7 telephone advice
from Phil's office in Perth.

phil@lansselllegal.com.au

PO Box 4189 Mosman Park

Or locally at 16 Culham Street Hopetoun

Website at www.lansselllegal.com.au

Liability Limited by a Scheme Approved under Professional Standards Legislation

PROPERTY MAINTENANCE

ALAN HIGGINS

PROFESSIONAL CARPET,
UPHOLSTERY & TILE
CLEANING

COMPLETE FARM HOUSE
CLEANS

RENOVATION WORKS AND
PROPERTY MAINTENANCE

0400716885

AUTOMOTIVE

EMG
ESPERANCE MOTOR GROUP

**Service, sales, used
and new vehicles**

ESPERANCE MOTOR GROUP PTY LTD
Cnr Norseman & Sheldon Roads, Esperance
Ph (08) 9071 0100 • Fax (08) 9071 0129

MESSAGE

AS SMART

Remedial and Relaxation Massage
(Remedial Therapy is claimable)
Member of AMT

Specialist Techniques in Pain Management
For all muscular aches and pains

LET OUR EXPERIENCE WORK FOR YOU!
0428 422 368

www.smartremedialmassage.com.au
2/51 Dempster St, Esperance

RESOURCE CENTRE

Hopetoun Community Resource Centre
Your local connection

46 Veal Street Hopetoun WA 6348
P: 08 9838 3062 F: 08 9838 3590 E: hoptoun@crc.net.au
www.hoptounwa.com

- Visitor Information Centre
- Internet Access & WiFi
- Photocopying & Faxing
- Professional Photo Printing
- Government Access Point
- TransWA Bookings
- Public Library
- National Park Passes
- Room Hire
- IT & Office Supplies
- Training Courses
- Handmade Gifts

EARTHWORKS

HOPETOUN EARTHWORKS

- Earthworks • Trenching • Siteworks
- Clearing • Septic • Bobcat & Backhoe Hire

Ph: 9838 3336
Fax: 9838 3360 Mobile: 0427 383 336
Supply & Laying Ready Mixed Concrete

MESSAGE

**Remedial Massage &
Bowen Therapy**

Glenys-Joy Brown 0428 502 097
Health Rebates Available

SMASH REPAIRS

Albany Smash Repairs

Paul Armstrong
Proprietor
Tel 9842 2838
Fax 9841 6131
paularmstrong@smashrepairer.com

14 Prior Street, Albany WA 6330 • A/h 0418 936 010
• All Makes & Models • All Work Guaranteed
24 Hrs Towing

EARTH MOVING

**GP&DR Belli
Mini Earthworks**

WE DO:

- Chain Trenching (Back Hoe attachment) • Slashing • Filling and leveling
- Pads • Post holes and footings with augers to 900mm Diameter,
- Rotary Hoing • Retainer Walls • Site, Yard & Stockyard Clean Up
- Landscaping • Sand, Gravel & Loam Supplies • Tip Truck & Hiab Hire

For enquiries contact: Greg or Di
Mob: 0427 027 003

PAINTING

PAINTING

Reg. #4709
Domestic, Commercial, Industrial,
Farm Painting Specialty

Clean, Precise and Quality work.
Local references available.

For FREE Quotation and Booking
Call Mick
0419 701 332

TYRES

HOPE TYRES

**WE STOCK AND REPAIR A WIDE
RANGE OF TYRES AND BATTERIES**

Contact Riaan for all your Tyre and Battery
needs on **0474 143 691**
85 Tamar Street, Hopetoun WA 6346
hope tyreservices@gmail.com

ABN: 70 681 573 176 – Licence Numbers: MRB8814 & MR17261



UPCOMING EVENTS

February

- 1-24 Spaced 4: Rural Utopias Residence Program
- 13 RAIN Ravensthorpe Crop Updates
- 13 RAIN-Ravensthorpe Crop Updates
- 14 Club Merlot
- 17 StoryTime, Ravensthorpe CRC
- 17 RDHS P&C AGM, 5.30-6.30pm
- 18 Shire Council Meeting, 6-7pm
- 19 Ravensthorpe Progress Association AGM, 7-8pm, Red Room, Ravensthorpe Community Centre
- 20 Munglinup Graphite Project Community Information Session, 12.30-1.30pm, Ravensthorpe Entertain Centre and Sporting Complex
- 21 RAIN Spray Application Workshop, 10.30am-4.30pm, Floater Road, Ravensthorpe
- 24 StoryTime, Ravensthorpe CRC
- 22 Hopetoun Colour Run, 3-7pm. Live music from Car Park Social & Tanya Ransom, as well as market stalls.
- 28 Community Spirit Freelance Journalist Program submissions due
- 28 Southerners Fishing Classic Registration Night, 6-8pm
- 29 Southerners Fishing Classic

March

- 2 Labour Day
- 5 Rural Edge-Farm Finance for Performance, Ravensthorpe CRC
- 6 Ravy Expo @ Tigerland, 3-10pm, Tigerland, Tennis Club
- 6 World Day of Prayer, Pray for Zimbabwe, St Andrews Church, Ravensthorpe, 10.30am
- 10 Southerners Genreal Meeting
- 13 MEEDAC Expo
- 13 Community Collab, 9.30am-12pm, Ravensthorpe CRC
- 13 Grants Info Session, 2-4pm
- 13 Club Merlot
- 17 Shire Council Meeting, 6-7pm
- 21-22 Wellness Weekender

For contributions to the Calendar of Events email the details to contributions@cospirit.net

REGULAR EVENTS

Hopetoun

BOOTS COOTING Fridays 1.30 til 3.30 at Mary Ann Haven, Veal Street Hopetoun please Phone Rosa 0428 383 034 or Trix 9838 3378.

BOWLS Wednesday Ladies 8.45am, Mixed Scroungers 1pm, Thursday 9.30 am Coaching with Coral. Friday 4pm Roll up and fun. Sunday 1pm Social Bowls. Everybody welcome.

CRAFT Mondays from 1pm at Mary Ann Haven, all welcome.

CRC, Library & Visitor Centre Open Monday to Friday 9am to 4pm. Saturdays 10am to 12pm (Visitor Centre only). Committee Meetings bi-monthly, ask at CRC.

CWA 2nd Monday 1.30pm at Centre

CWA SHOP Saturdays 8.30 to 11.30. Library, second-hand goods, fresh vegetables, fruit, eggs, cakes and pies, honey, jams, and relishes, Asian food.

FIRE BRIGADE TRAINING First Wednesday of each month from 6.30pm at Emergency Services Building, Veal St.

GOLF Saturday Ladies and Men's Golf 18 holes - Winter season names in by 11.30 Tee Off 12 noon, - Summer Season names in by 12 noon Tee Off 12.30.

Thursday Scroungers Ladies and Men's Golf 9 or 12 holes depending on the weather, names in by 1.15 Tee Off 1.30. Visitors and Learners are always welcome.

HACC HEALTH SERVICE Day Centre Program, Tuesdays, alternating weekly between Hopetoun and Ravensthorpe. Contact HACC for details.

HOPETOUN LOCAL MARKETS first Sunday of each month except June, July and August when the markets go into recess for the winter. Ray White Real Estate outside area at 9am to 1pm. January markets will also be the first Sunday of the month. Please contact Robyn Cockram 0429 925 569 or cockram36@gmail.com for more details

HOPETOUN PROGRESS ASSOCIATION Tuesday - Friday 9am till 2pm. Phone/fax 9838 3363. Monthly meeting last Tuesday of the month 7.30.

LITTLE BEAT-BOP Hopetoun Community Centre, rear foyer, Mondays 9.15-9.45am, for School Term. Registrations required. Tel 9838 3062 or www.hopetounwa.com

MACHINING GROUP Thursdays phone Wilma 9838 3098 or Mary 9838 3243.

MEN IN SHEDS Tamar St Tues & Thurs 8.30am-12, 1-3pm and Sat 8.30am-12pm. All men welcome contact Darryl Quinn 0428 442 517.

MEN'S STAY ON YOUR FEET Tuesday and Thursday, 9-10am at Men's Shed, Tamar St.

OLD BASTARDS CLUB Men only BBQ, Fridays. Contact Geoff Earl 0418 905 555 for details.

POOL COMPETITION/DARTS Wednesdays 7.30pm Port Hotel.

POOL COMPETITION Wednesday 7pm Wavecrest Bar and Bistro.

SEA SEARCH AND RESCUE Monthly training at Emergency Services Building, as indicated by regular signage on Veal St.

SENIOR CITIZENS Thursday 1.30 pm. Meetings 1st Thursday every second month from June, 10 am at Mary Ann Haven.

SOUTHERN SCRIBES Fourth Saturday 1pm, phone

9838 3472.

STAY ON YOUR FEET Tuesdays & Fridays 9am-10am Mary Ann Haven.

STORYTIME Every Monday 10am (except school and public holidays) at Hopetoun Public Library (inside Hopetoun CRC) Free stories, songs, rhymes and craft. Suitable 0-5y.

WINDSPRAY ART We meet every Thursday 10-2 at 65 France St. New members ALWAYS most welcome to join us. Watch CRC notice board for upcoming courses. Enquiries: Beryl Semple 0428 411 171, Louise Lodge 0427 700 613.

Munglinup

GOLF Ladies Golf: Wednesday by 8.45am Men's Golf: Saturdays by 11.30am.

Ravensthorpe

GOLF April- October Ladies Golf: Wednesday names in by 9am Men's Golf: Saturday names in by 12pm

GYM membership available. Contact Ravensthorpe Shire 9839 0000.

HAND GUN CLUB Every second Sunday 9am Contact Trina 0437 090 303.

HOSPITAL AUXILIARY meets on second Tuesday of every second month at the red room. Starting Feb 14, 2017. Contact Judy Harp 9838 1565.

MUSEUM/INFORMATION CENTRE Open 10 am to 4 pm Monday to Saturday or by appointment 9838 1044 or 9838 1583.

OP SHOP trading 10am to 1pm Tuesdays to Saturdays.

PROGRESS ASSOCIATION MEETINGS held on the third Wednesday of each month (except September & December) at 7pm, Red Room, Ravensthorpe. New members always welcome.

RAVENSTHORPE BASKETBALL For more information contact Ethan Clarke 0452 261 717.

RAVENSTHORPE PLAYGROUP Thursday 9-11.30am at the Ravensthorpe Youth Club building. Please bring a piece of fruit to share.

RAVENSTHORPE REGIONAL ARTS COUNCIL RRAC Dance Program (During School Term2, 2019) Weekly Dance Classes for Adults and Children. Hopetoun, Ravensthorpe & Lake King. Contact Kirsty rraccoordinator@westnet.com.au or 0438 945 405. Facebook: RRAC Dance

STATE EMERGENCY SERVICE meets at 7.30 pm on second and fourth Wednesday of month at SES HQ, Morgan St.

STAY ON YOUR FEET EXERCISES exercises at Senior Citizens Centre, Fridays 10-11am.

COMMUNITY RESOURCE CENTRE & LIBRARY Open all day from 9am-5pm Monday to Friday.

TAI CHI Senior Citizens Center each Wednesday 9.30 am - 10.30am \$2. Contacts Jessie Fairhead 0429 389 023 or Liz Aberline 0427 839 988.

YOGA CLASSES Ravensthorpe District High School Hall. Monday, Wednesday, Friday, Saturday, Sunday from 6:45 PM to 7:45 PM. Check Facebook: 'Philachyan Life Skills' for schedule updates

If you know of any changes that are required to REGULAR EVENTS, please ensure you notify us at contributions@cospirit.net.

CHURCH NOTICES

Anglican Church

St Andrews Ravensthorpe service on the first and third Sunday of the month at 11am.
Peter the Fisherman, Hopetoun service every Sunday at 9am followed by morning tea.
Enquiries Kevin and Lyn Hosking, 9838 3130.

Catholic Church

Saturday before 1st Sun of the Month Hopetoun 6pm
Saturday before 3rd Sun of the month Hopetoun 6pm
1st Sunday, Ravensthorpe, 8.30am
3rd Sunday, Ravensthorpe, 8.30 am
For enquiries please call Fr A Chukwu 0470 439 768.

Ravensthorpe CHRISTIAN FELLOWSHIP

Our services for 2019 will be on the second and fourth Sunday's.
Second Sunday at 10 am and fourth Sunday at 10am OR 2pm.
For enquiries contact Rob Lloyde 9838 1153 or 0427 381 153 or Ron Ross 9838 1188 or 0429 381 188

Sport News

18 teams descend for Classic

■ From Page 32

Thank you to everyone who helped in any way over the three days—members and non-members with preparing, supplying, cooking and serving food and of course the washer-uppers, and the bar staff—there were so many positive comments about the food.

Thank you to the groundsman, raffle suppliers and sellers. You are too many to thank individually but a great big accolade from the Committee.

Horizon Power representative Debbie O'Shaughnessy presented the prizes.

Cards were drawn and tote bags were won by Lead Lyn Murdoch (Ravensthorpe), 2nd Marlene Webb (Albany), 3rd Karen Ward (Dumbleyung), Skip Coralie Downsborough (Joondalup).

The winners from Gnowangerup with 16 pts +39 were May Kiddle, Mary Welstead, Maureen Heberle and Karen Dye.

Second with 15+49 were Karen Miller (Mt Barker Golf) Peggy Cox (Dudley Park), Bhel Hallam (Kulin) and Denise Edwards (Ravensthorpe).

Third with 15+10 was the Emu Pt team of Yvonne Shalders, Colleen Haynes, Gai Jones (Middleton Beach) and Judy



■ Christine, Beryl, Gwen, Pat and Debbie.

Weiss (Mt Barker Golf).

Fourth with 12+11 were the team of Beryl Cooper (Mid Beach), Christine Radford (Emu Pt), Pat Davis and Gwen Anning (Albany).

Thank you to everyone that contributed and made it a very successful carnival.

—Pam Cousins, Ladies President

Public Notices

Ravensthorpe Women's Hockey Association

AGM

Wednesday 18th March, 2020

At the Ravensthorpe Tennis Club 7.00pm

Everyone welcome

For more information

Phone Tina 0427 423 924

SWANS VETERINARY SERVICE

Morgans St, Ravensthorpe

Tuesdays by Appointment

Phone 9071 5777



Ravensthorpe Hospital Auxiliary AGM

Tuesday 17th March, 2020

1pm in the Community Building Red Room

ALL WELCOME

TO LET

Hopetoun, central older home, suit mature single/couple, \$130pw

Ph: 0423 031 704

WORLD DAY OF PRAYER

PRAY FOR ZIMBABWE

Friday 6 March 2020

St Andrews Church, Ravensthorpe 10.30 am

Followed by a Bring & Share Lunch Everyone is welcome to attend

Contact 9838 1583

Disclaimer:

1. No liability shall be incurred by Community Spirit by reason of any amendments to, or error or inaccuracy in, or the partial or total omission of an advertisement, or by reason of delay or default or from any other cause whatsoever.

If in the opinion of Community Spirit the error clearly reduces the value of the advertisement and the advertiser notifies it to Community Spirit within seven days of the publication date, then no charge will be made for the advertisement containing the error.

2. While the Compilers normally aim to publish all material submitted if space is available, Community Spirit reserves the right to refuse to publish or republish any contribution or advertisement without giving any reason.

3. No articles, letters or advertisements will be accepted which may appear to be defamatory or accusatory, or to favour one side in a legal dispute.

4. Community Spirit reserves the right to shorten or otherwise amend any contribution other than advertisements. Articles from a Not for Profit organisation regarding past events that thank sponsors within the body of the article, will be free of charge.



ANNUAL GENERAL MEETING

RAVENSTHORPE PROGRESS ASSOCIATION

Wednesday 19th February, 2020

Community Centre Red Room

6.45pm for @ 7.00pm start

Guest Speaker 7.30pm

Zahra Shirazee – Tourism Officer

followed by refreshments

For more information Phone Christine 0447 381 300

— New members welcome —

BUSINESS AND SERVICES DIRECTORY

ALBANY

Albany Fitness 9842 1200 • sales@albanyfitness.com.au
Albany Smash Repairs 9842 2838 • paularmstrong@smashrepairer.com
 www.smashrepairs.com.au
Smith's Aluminium 9842 2617 • smithali@westnet.com.au

DOCTOR'S SURGERY

Hopetoun Ravensthorpe Medical
 Hopetoun—Mon, Wed, Fri 9am-5pm 9838 3854 • F 9838 3729
 Ravensthorpe—Tues, Thurs 9am-5pm 9838 1600
Community Transport Vehicle Co-ordinator 0439 335 147

ESPERANCE

ARC Accounting 9071 5833 • admin@arcaccounting.com.au
AS Smart Remedial & Relaxation Massage Peter Dempster 0428 422 368
 Saturday morning appointments available • www.smartremedialmassage.com
Compass Conveyancing (WA) 9071 1655 • meredith@espcnvey.com.au
Esperance Bay Dental 9071 5888 • www.esperancebaydental.com.au
EMG Ford 9071 0100 • accounts@emgesperance.com.au
Esperance Insurance Broker Rod Parsons 9071 3600 • M 0427 712 902
 rodp@espib.com.au • www.espib.com.au
Esperance Toyota 9071 0100 • accounts@emgesperance.com.au
Powerplant Motorcycles 9071 1780 • tim@powerplantmc.com.au
 www.powerplantmotorcycles.com.au
Sportspower - Greg Bower 9071 2365 • M 0402 124 681
 esperance@sportspower.com.au
Swan's Veterinary Services 9071 5777

HOPETOUN

4 Rivers Plumbing & Gas 0407 358 983 • petersmith@4rivers.com.au
Belli Mini Earthworks Ph 9838 3898 • M 0427 027 003 • diannegreg@wn.com.au
Carpet Cleaning hopetoungapservices@icloud.com
Hallams Cartage Contractors M 0429 049 114 • hallamscartage1@bigpond.com
Hopetoun Beachfront Chemist 9838 3333 • hopetouchemist@gmail.com
Hopetoun Community Resource Centre ... 9838 3062 • hopetel@comswest.net.au
Hopetoun Earthworks & Concrete Supply 9838 3336 • 0427 383 336
Hopetoun Garden & Property Services 0400 716 885
 hopetoungapservices@icloud.com
Hopetoun General Store 9838 3052 • russ.asty@bigpond.com
Hopetoun IGA 9838 3919 • russ.asty@bigpond.com
Hopetoun Slashing 0429 049 114
Hopetoun Transport and Haulage 0429 049 114
Hopetoun Tyre Service 9838 3156 • M 0474 143 691 • hopetire@bigpond.com
Lansell Legal—PO Box 4189 Mosman Park 6912 0438 738 965
 phil@lanselllegal.com.au
Little Barrens Early Learning Centre ... 9838 3278 • littlebarrenselc@bigpond.com
Pest Control Local & Termites 0429 801 295 • casperprince@bigpond.com
Port Hotel 9838 3053 • F 9838 3036 • Kitchen 9838 3375
 www.porthotel.com.au
Ray White Rural South Coast WA 9838 3100 • F 9838 3250 • M 0429 299 797
 raywhiteruralsouthcoastwa.com.au
Wavecrest Bar & Bistro 9838 3400 • venuemanager@wavecrest.net.au
Wavecrest Village 9838 3888 • village@wavecrest.net.au

JERRAMUNGUP

Jerramungup Electrical Service M 0428 351 171 • jmpelectrical@bigpond.com

LAKE KING

Lake King Agencies & Roadhouse 9874 4094
Lake King Tavern, Motel & Caravan Park 9874 4048
 lakekingtavern@gmail.com • www.lakekingtavernmotel.com.au
Landmark Lake King—Ross 9874 4004 • F 9874 4005 • M 0428 105 059

RAVENSTHORPE

4 Rivers Plumbing & Gas 0407 358 983 • petersmith@4rivers.com.au
5K Livestock and Bulk Pty Ltd Ben Sutherland 0428 271 818
Dingo's Dog Kennels & Riley's Cattery 9838 1092 • M 0427 381 092
Eremia Camel Treks & Camel Museum 9838 1092 • M 0427 381 092
 animamundi@westnet.com.au
FE Daw & Sons 9838 1008 • fedaw@wn.com.au
Freight Lines General - Murray 9838 1343 • F 9838 1382 • M 0427 381 211
Hannaford Seed Grading M 0427 268 136 • hannaford.ravensthorpe@gmail.com
Madden Rural Jordan 0428 542 428 • Mick 0429 380 081 • Steve 0428 380 081
 admin@maddenrural.com
Palace Motor Hotel 9838 1005 • admin@ravyhotel.com.au
R & L Construction 9838 3888 • M 0428 381 232
R and R Heavy Diesel Services M 0438 164 616 • randrhds@bigpond.com
Ravensthorpe Agencies - B&R Biddulph 9838 1236 • ravyag@westnet.com.au
Ravensthorpe Agricultural Initiative Network 9838 1018 • M 0417 174 299
Ravensthorpe Bulk Haulage Ph/fax 9838 1497
 admin@rbh1.com.au • Wayne 0427 381 497 • Debbie 0428 381 497
Ravensthorpe Cellars 9838 1808 • ravycellars@westnet.com.au
Ravensthorpe Community Resource Centre 9838 1340
 ravensthorpe@crc.net.au
Ravensthorpe Mechanical Service 9838 1146 • M 0428 381 146
 ravmechservice@bigpond.com
Ravensthorpe Pharmacy 9838 1020 • ravensthorpepharmacy@gmail.com
South Coastal Agencies, Landmark 9838 1081
 kyle.forsyth@landmark.com.au • M 0417 912 318
 tom.major@landmark.com.au • M 0403 782 887

EMERGENCY NUMBERS

EMERGENCY TO REACH ALL SERVICES 000
 Ambulance NON-Emergency 13 12 33
 Hopetoun Volunteer Marine & Rescue 9838 3207
 Lake Grace Hospital 9890 2222
 Police - Hopetoun 9838 3724
 Police - Jerramungup 9835 0222
 Police - Lake Grace 9865 1007
 Police - Ravensthorpe 9838 1004
 Ravensthorpe Hospital 9838 2211
 State Emergency Service 1300 130 039

All phone numbers, email and web addresses on this page are hyperlinked. Just click on it on your smart device.



2020 HARD COPY SUBSCRIPTION

☐ **ONE YEAR POSTAGE SUBSCRIPTION (23 Issues) \$90*** (anywhere in Australia)

☐ **ONE YEAR PICKUP SUBSCRIPTION (23 Issues) \$90***
(pick up at Ravensthorpe CRC from Thursday of publishing date)

NAME:

ADDRESS:

.....POSTCODE

PHONE: EMAIL

***Your hard copy subscription is subsidised by the Community Spirit Committee**

Method of Payment

Electronic transfer for \$

A/C Name: Community Spirit Newspaper Inc. BSB: 036 184 ACC No: 27-0172

Please use your name as reference.

Email form to: financeadmin@cospirit.net or post your form to: PO Box 135, Ravensthorpe, 6346

Enclose Cheque/Money Order for \$

Please post cheque/money order and Subscription Form to: PO Box 135, Ravensthorpe, 6346

DIGITAL SUBSCRIPTIONS ARE AVAILABLE VIA

www.ravensthorpe.crc.net.au/community-spirit.html

18 teams descend for Classic

■ Hopetoun Ladies Classic

On January 23rd-24th the Hopetoun Ladies Classic was played with 18 teams of fours descending on Hopetoun with teams coming from Albany (3 different clubs), Esperance, Condingup, Scaddan, Ravensthorpe, Newdegate, Dumbleyung, Mt Barker (2 clubs), Joondalup, Dudley Park, Kulin, Corrigin, Gnowangerup, Westonia, Kalgoorlie and Hopetoun with many familiar teams returning and a few newbies.

Horizon Power were our main sponsor donating winners and place getters prizes, with rink wins being sponsored by OD Transport, Cleanaway Esperance, Hopetoun CWA, and Hopetoun Bowling Club Lotto draw and Ray White Real Estate Hopetoun supplying pens.

The format was Thursday 1 game 12 ends then 3 games 10 ends, Friday 2 games 12 ends.



■ Continued Page 29 ■ Winners Karen, Maureen, Mary, Debbie and May.

SOUTHERNERS SPORTING CLUB PRESENTS

THE 26TH ANNUAL HOPETOUN FISHING CLASSIC

BOAT BEACH KIDS DIVE

\$8,000 IN PRIZES UP FOR GRABS

FRI 28 FEB
REGISTRATIONS & SAFETY BRIEFING
5pm-7pm
Southerners Clubroom
Great Street
\$10 Fish and Chips

SAT 29 FEB
COMPETITION DAY ENTERTAINMENT
2pm onwards
Southerners Clubroom - Great Street
Markets, kids entertainment, food and bar facilities
WEIGH-IN & PRESENTATIONS
4pm
followed by live music

SHARKS

MORE INFO ON OUR FACEBOOK PAGE

SOUTHERNERS SPORTING CLUB



■ Judy, Gai, Colleen, Yvonne and Debbie.



■ Brel, Denise, Karen, Peggy and Debbie.