

# Community Spirit

Distributed fortnightly in Fitzgerald, Hopetoun, Jerdacuttup, Lake King, Lake Varley, Munglinup, Newdegate and Ravensthorpe

## Helping to build a low waste community

### ■ HOPETOUN CRC

Hopetoun Community Resource Centre had an important week of discussing plastics, specifically single-use plastics, earlier this month.

On Wednesday July 3rd, Hopetoun residents gave a warm welcome to Dr Harriet Paterson, from UWA Albany, as she attended the CRC to deliver an Oceanography Workshop.

Dr Paterson presented this free workshop to our community to discuss plastics in the ocean and the impact it is having on our coastline and environment.

"The evidence gathered by oceanographers indicating a clear line of plastic particles moving across the Indian Ocean is overwhelming" Dr Paterson explained. In particular, the "plasticised coastline between Augusta and Adelaide will be problematic".

This area has been highlighted to become one of the worst areas in the world for the amount of plastics to wash up on the beaches in the coming years. This is because of ocean currents and tides attracting the plastic to our coastline.

It was heartbreaking to see the amount of plastics that ends up in our ocean and how it is impacting marine life and our coastline. Although the plastic rubbish that is washing up on our beaches is not necessarily from the local area, or even from this country, once it's on our beach it's our problem and we need to do something about it.

One simple suggestion is to collect at least 10 pieces of plastic every time you visit the beach and dispose of it correctly.

It doesn't need to be big pieces of plastic, the macro and micro plastics are just as important. See what you can fit in your pocket or collect one of Bruce's bags from the CRC to take with you.



■ Continued page 5

■ Jackie Edwards at the new refill station.



# 0407 358 983

[www.4riversplumbing.com.au](http://www.4riversplumbing.com.au) • PL 923 & GF 002820

# Ray White®

## RAVENSTHORPE



**72 SPENCE ST  
RAVENSTHORPE \$30,000**  
Vacant block of land, 1214sqm zoned residential. Power & scheme water available. Existing cement pad. No obligation to build.

**Check it out here!**

## RAVENSTHORPE



**47 MARTIN ST  
RAVENSTHORPE \$145,000**  
1214sqm block with extra large shed with 2 large roller doors and office, ablutions. 2 x 1 residence behind the shed with A/C. Full fenced yard. **REDUCED, REDUCED**

**Check it out here!**

## RAVENSTHORPE



**113 MARTIN ST  
RAVENSTHORPE \$130,000**  
Charming fully renovated. 3 bed, 1 bath plus study home on 1214sqm block, large enclosed backyard, double garage and back lane access.

**Check it out here!**

## RAVENSTHORPE



**47 DUNN ST  
RAVENSTHORPE \$99,000**  
2 bed plus sleep out—tidy, well presented on quarter acre block. Large living room with air con. Tidy kitchen and sun room. Have a look—it's ready to go! **Currently Tenanted**

**Check it out here!**

## HOPETOUN



**59 CAMBEWARRA DRIVE  
HOPETOUN \$368,000**  
Fabulous 2 x 1 bedroom home with BIR, wood fire, large back patio on 2.6 acres with large powered shed. R/W tank. Extra sleeping quarters at the shed. Attractive block, nice views. Call to view!

**Check it out here!**

## HOPETOUN



**221 BANKSIA ROAD  
HOPETOUN \$300,000**  
Modern 4 bed 2 bath family home on 2.49 acres with large shed, fenced yard & alfresco. Large kitchen and adjoining living/dining area, plus cosy theatre room.

**Check it out here!**

## HOPETOUN



**27 RAGLAN STREET  
HOPETOUN \$360,000**  
Amazing views from the top of town. 3 bed 2 bath home with living and separate dining area. Upstairs balcony with ocean views. Modern roomy kitchen, Parquet flooring. Alfresco, double garage with roller door.

**Check it out here!**

## HOPETOUN



**36 WILKINSON STREET  
HOPETOUN \$350,000**  
Modern 4 x 2 home on large 900sqm block with ocean glimpses. New carpet in the bedrooms. Easy care yard. Double lock up garage. Currently tenanted, please call to view.

**Check it out here!**

## HOPETOUN



**118 WHALE BAY DRIVE  
HOPETOUN E.O.I**  
4 bed x 2 bath home on a very secluded bush block, close to the Fitzgerald National Park. Open plan living, large bedrooms all with BIR's. Under cover patio, enclosed yard, garden shed. Currently Tenanted.

**Check it out here!**

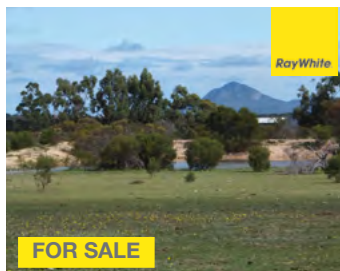
## HOPETOUN



**70 PLATYPUS ROAD  
HOPETOUN \$450,000**  
Modern immaculately presented Ross Squire 4x2 home, open plan living area on 1.92ha semi rural block. Large powered shed. Rain water tanks, solar panels, veggie gardens and much more.

**Check it out here!**

## HOPETOUN



**36 BLUE VISTA  
HOPETOUN \$399,000**  
6.98ha property ideal for horses, modern 3x2 homestead, stables, excellent fencing & paddocks, huge dam, rainwater, barn style garage, stunning views, productive soil for farming.

**Check it out here!**

## HOPETOUN



**423 HAMERSLEY DRIVE  
HOPETOUN ALL OFFERS CONSIDERED**  
World class views and location on 5ac bush block at entry to Park. Lovely 3 x 2 home, modern facilities, good shed. Outstanding location. Views ocean to Culham inlet. Currently Tenanted.

**Check it out here!**

## RAY WHITE RURAL (SOUTH COAST WA)

25 Veal Street Hopetoun

raywhiteruralsouthcoastwa.com.au

Ph: 08 9838 3100 • Residential Sales 0428 711 576 • Rural Sales 0429 299 797



# Looking after the community



A great resource for the community following a collaboration between Cooperative Bulk Handling (CBH), St John Ambulance and the Shire of Ravensthorpe.

CBH kindly donated a top of the line defibrillator acquired from St John Ambulance.

The defibrillator has been installed at the Shire office at 65 Morgans Street Ravensthorpe.

On behalf of the community and the Shire we wish to thank CBH and St John's for their commitment to providing lifesaving equipment within our community.

Thank you.

—Ravensthorpe Shire

## Invitation to Lollipop unveiling

Belinda (Bell) and Darrin would like to invite everyone along to Celebrate the Unveiling of the Largest Free Standing Lollipop in the World at 12noon on Sunday September 8th.

There will be face painting, a jumping castle, slide, sumo wrestling fun, table tennis, Miss Perfect Pamper Parties, and a Free Lollipop for all the little ones.

We would love for you to come and join us in the unveiling of this fantastic historical day in Ravensthorpe.

*This week's*  
**SPECIALS**

**\$25<sup>kg</sup>**  
Australian Beef Porterhouse Steak

IGA Corned Silverside .....	\$8.00kg
Pork Belly Fingers .....	\$14.00kg
Peppercorn Extra Lean Beef Meatballs 360g.....	\$8.00ea
Pink Lady Apples .....	\$4.00kg
WA Navel Oranges .....	\$3.00kg
Carrots 1kg bag .....	\$1.00ea
Washed Potatoes .....	\$2.20kg
Peters Drumstick 4-6 pack select varieties.....	\$4.00ea
Continental Cup A Soup 2 Serve select varieties .....	\$1.00ea
Lipton Tea Bags Black Tea/English Breakfast 100pk ....	\$2.49ea
Golden Circle Fruit Drink 6x250ml select varieties.....	\$1.90ea
Bega Block Cheese 500g select varieties .....	\$6.00ea
Nescafe Blend 43 500g .....	\$14.00ea

On sale Wednesday July 31st  
to Tuesday August 6th 2019.

Hopetoun **IGA**

30 Veal Street Hopetoun • [9838 3919](tel:98383919)

## Contacts

### Ambulance:

Emergency ..... 000  
Non-Emergency ..... 13 12 13

### Hospitals:

Ravensthorpe ..... 9838 2211  
Esperance ..... 9071 0888  
Albany ..... 9892 2222

### Doctors Surgery:

Hopetoun ..... 9838 3854  
Ravensthorpe ..... 9838 1600

### Dentist:

Ravensthorpe ..... 9838 1322

### Esperance Hospital

Public Dental Clinic..... 9071 0889

### Community Nurse/Child Health:

Ravensthorpe ..... 9838 2211

### Extended Care Nurse:

Hopetoun ..... 9838 3323

### Home and Community Care

Office ..... 9838 3144  
Mobile ..... 0429 889 675

### Community Vehicle Transport

Chelle, Coordinator.....0439 335 147

### Hospital Auxiliary:

Second Tuesday of the month 1.30pm in the Red Room  
Contact Judy Harp

### Allied Health:

Services such as Physio, Dietician, Occupational Therapy and Speech Pathology are available. Contact Ravensthorpe or Esperance Hospital to find out more about these services.

### Mental Health:

There is a Mental Health service available currently. Please contact Ravensthorpe Hospital to find out more about this service.

## Shire of Ravensthorpe Councillor Contact Details

**Shire Council Offices.....9839 0000**

**Keith Dunlop**—Shire President.....

Phone: 9838 330; Mobile: 0428 383 302  
Email: Keith.dunlop@ravensthorpe.wa.gov.au

**Jules Belli**—Deputy Shire President ..... Mobile: 0427 440 582

Email: Jules.belli@ravensthorpe.wa.gov.au

Peter Smith..... Mobile: 0407 358 983

Email: Peter.smith@ravensthorpe.wa.gov.au

Ian Goldfinch ..... Phone: 9838 5049; Mobile: 0428 385 049

Email: Ian.goldfinch@ravensthorpe.wa.gov.au

Tom Major ..... Mobile: 0403 782 887

Email: Tom.major@ravensthorpe.wa.gov.au

Kerry Dickinson ..... Phone: 9838 1259; Mobile: 0429 381 014

Email: Kerry.dickinson@ravensthorpe.wa.gov.au

Graham Richardson ..... Phone: 9838 3880; Mobile: 0474 492 810

Email: Graham.richardson@ravensthorpe.wa.gov.au

## Word of the Day

**motley** adjective | MAHT-lee

### Definition:

- 1 : variegated in color
- 2 : made up of many different people or things

### Did You Know?

Motley made its debut as an English adjective and noun in the 14th century, but etymologists aren't completely sure where it came from. Many think it probably derived from the Middle English mot, meaning "mote" or "speck." The word is also used as a noun identifying a multicolored fabric, a garment made from such a fabric, or—perhaps the best known sense of all—the fool who often wore such outfits in the European courts of the Middle Ages and the Renaissance.



### ALL ENQUIRIES:

contributions@cospirit.net  
Kylie Thomas, Co-ordinator, 0408 840 447  
Or Attn: Contributions, PO Box 135,  
Ravensthorpe 6346.

Or Hopetoun and Ravensthorpe Community Resource Centres will accept written articles. Include name, address and phone details in all correspondence.

### GENERAL ADVERTISING AND CLASSIFIEDS

Content to be sent in Word, PDF or JPEG formats. Classified proofs on request only.

### ARTICLES AND PHOTOS

Articles to be sent in Word format.  
Photos to be sent in JPEG format.  
Photos minimum size 500mb.  
Maximum of two photos per email.  
Photos of children require parental permission.

### ACCOUNTS AND SUBSCRIPTIONS

Email financeadmin@cospirit.net  
Phone enquiries Sandi Hunter,  
0417 950 615.

### MANAGEMENT COMMITTEE

Email secretary@cospirit.net or  
PO Box 135, Ravensthorpe 6346  
GRIEVANCES—contact secretary by email  
secretary@cospirit.net

### NEXT ISSUE DEADLINE:

5pm, Thursday August 15, 2019

# The Community Spirit is YOUR paper...

## WE WOULD LOVE TO KNOW WHAT YOU THINK AND WAYS TO IMPROVE THE PRESENTATION OF YOUR COMMUNITY SPIRIT.

We would also like to know what you would like to see in your paper.  
Please forward your contributions, thoughts & ideas to contributions@cospirit.net



# Building a low waste community

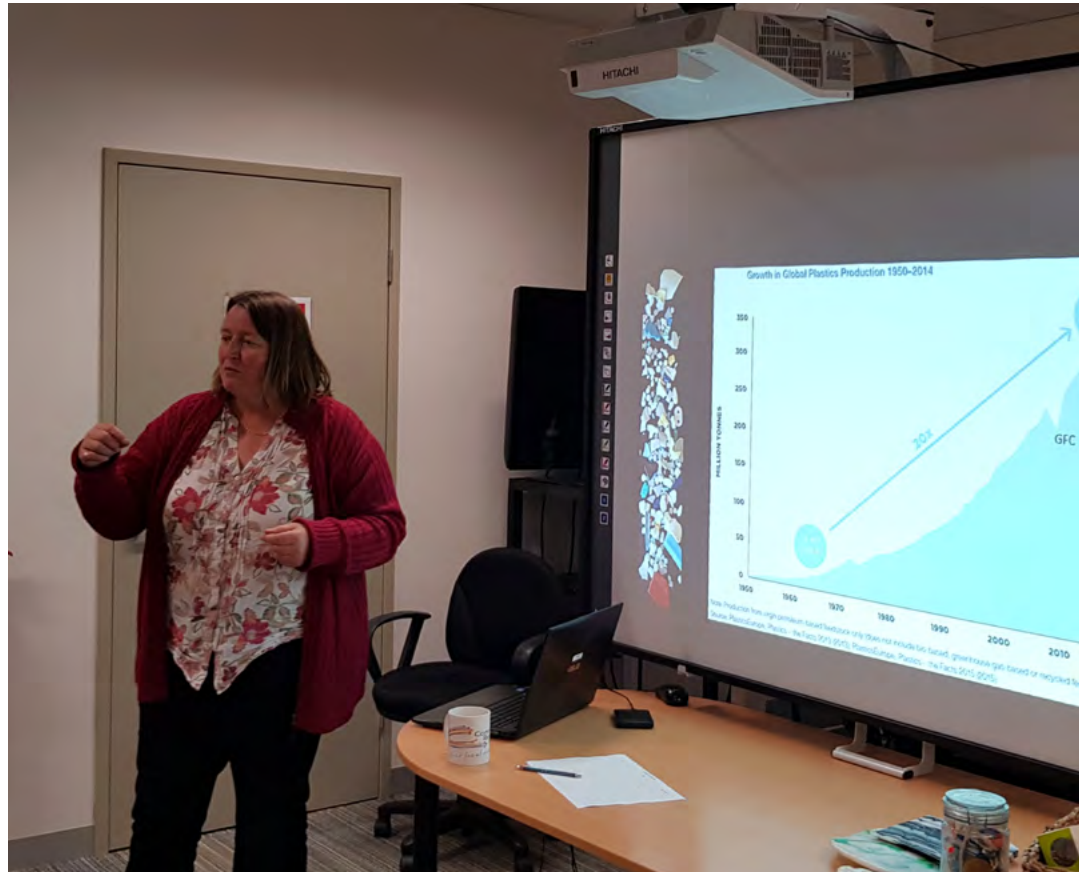
■ From page 1

Winter is the best time to be collecting plastic from the beach due to swell and currents so now is the time to be getting out there and making a difference.

You'll be surprised by how much plastic is on our beaches when you start looking. If there's that much on the beach, you can only imagine how much is on the bottom of the ocean.

Hayley Pullen, a young Hopetoun mum who is most passionate about our environment, attended the workshop and provided this feedback. "It was very informative and I found it motivating. Dr Harriet was a great presenter with loads of informative information".

Later in the week the Hopetoun CRC hosted an interactive webinar from the Department of Water and Environmental Regulation (DWER) who were consulting with the community about single-use plastics. They were asking community members what they knew about single-use plastics, explained what impact they're having on our environment and asking for ideas on how to reduce our use of these plastics.



■ Dr Harriet Paterson delivery her Oceanography Workshop at Hopetoun CRC.

The feedback from this consultation will be collated and used to help develop the departments future planning.

The Hopetoun CRC also attended an information session regarding the container deposit scheme which is being implemented in WA from June 2020.

■ Continued page 7

## What's your declared species priorities?

Southern Biosecurity Group are seeking your input into declared species control for the 2020/21 financial year.

If you've got ideas for what declared species the group should be focusing on, then please take five minutes and complete the online survey. Results from the survey are used to inform the Operational Plan and guides implementation of the Declared Pest Rate for the 2020/21 financial year.

The survey can be accessed either through Southern Biosecurity Group's website ([www.southernbiosecuritygroup.org.au](http://www.southernbiosecuritygroup.org.au)) or via the link <https://www.surveymonkey.com/r/PZHPBJV>.



### RAVENSTHORPE HOPETOUN FUTURE FUND

#### RAVENSTHORPE HOPETOUN FUTURE FUND

### BURSARY FOR 2020

The Board of the Ravensthorpe Hopetoun Future Fund are pleased to offer a total of 4 Bursaries to eligible candidates for the 2020 academic year.

Bursary funding will be available for distribution from early 2020 following selection of the successful candidates.

The bursaries will be available to assist candidates further their studies/career opportunities in the following fields:

- Sports
- Education
- Arts
- Life Skills

The bursaries of (up to) \$5,000 each are available across all four areas.

Application packs and eligibility criteria can be requested from Portia Chambers on 9839 0000 or [rhff@ravensthorpe.wa.gov.au](mailto:rhff@ravensthorpe.wa.gov.au).

Signed and completed applications must be submitted by 4.00pm 30 September, 2019.

Andrew Duncan  
Chairman  
Ravensthorpe Hopetoun Future Fund  
1 August 2019

# CULHAM INLET OFFICIAL OPENING

THE SHIRE OF RAVENSTHORPE WOULD LIKE TO OFFICIALLY INVITE YOU TO THE OPENING OF CULHAM INLET.

WE WOULD LIKE TO TAKE THIS OPPORTUNITY TO THANK ALL OF THOSE INVOLVED IN THIS PROJECT.

**TIME : 9.30AM**

**CULHAM INLET  
CAUSEWAY**

**FITZGERALD RIVER  
NATIONAL PARK**

**DATE : 14 AUGUST 2019**

**PRESENTATIONS AND OPENING  
TO COMMENCE AT 9.30AM.**

**MORNING TEA TO FOLLOW AT  
THE HOPETOUN COMMUNITY  
CENTRE 10.30AM**

**RSVP : 9 AUGUST 2019**

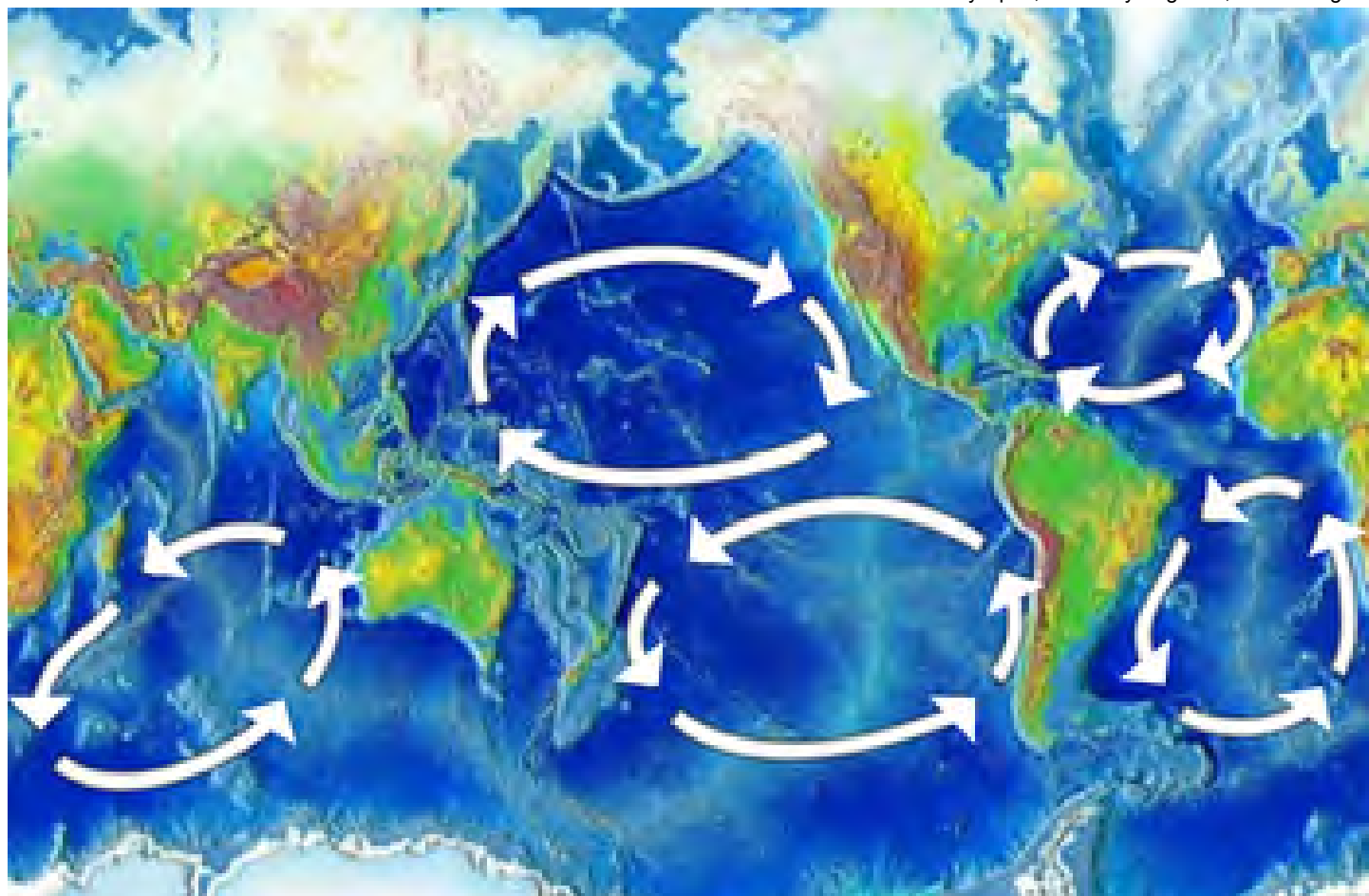
**PHONE: 9839 0000**

**EMAIL:  
[ea1@ravensthorpe.wa.gov.au](mailto:ea1@ravensthorpe.wa.gov.au)**

**A BUS WILL BE AVAILABLE FOR THOSE WHO DO NOT WISH TO DRIVE OUT TO THE PARK.  
PLEASE ADVISE SHIRE WHEN RSVPING IF YOU REQUIRE THE SERVICE.  
DEPARTURE WILL BE 9.00AM FROM THE HOPETOUN COMMUNITY CENTRE.**







■ Ocean Garbage Patches showing directional currents.

# Building a low waste community

## ■ From page 5

This scheme allows consumers to take empty beverage containers covered by the scheme to a refund point to receive a refund of 10 cents.

The Hopetoun CRC are consulting with the Shire of Ravensthorpe about ways we can support this scheme locally.

Western Australian's use on average 450 beverage containers per year which will equal \$45 cash back under this scheme.

We'd like to share a few interesting things that we learnt during this week that we didn't know before.

Firstly the word biodegradable means nothing in Australia. Anyone can use the word biodegradable on any product without any regulation.

Another is that compostable isn't always better. Many "compostable plastics" can only be composted in an industrial composting facility where temperatures reach above 65 degrees celsius.

They will not break down in a home composting system or in landfill. They

most certainly will never break down if they end up in the ocean.

Labels and packaging can be deceiving, check for the words "plant based" or "bioplastic" as a better choice if you must purchase a plastic product.

A plastic bottle has an average lifespan of 7 minutes but takes over 450 years to break down.

We as individuals and a community are needing to rethink our use of plastics, find alternatives to the plastic products we use in our day to day lives and be more conscience about our product choices.

There are many clever people and companies out there that are coming up with some fantastic plastic alternatives, recycling plastics in new and innovative ways and helping to promote awareness of the current and future issues surrounding plastics.

The Hopetoun CRC staff and committee are beginning to build a low waste community by recently implementing several initiatives not previously available in Hopetoun.

We have set up Hopetoun's first refill station for the public to refill their cleaning and personal care products.

When you've run out of dishwashing liquid for example, you can bring your empty bottle into the CRC and fill it up.

You're not only saving our planet but your saving your pocket too as we're passing the bulk discount onto our customers.

At the moment we have a selection of 10 different cleaning and personal care products that are all plant based, eco-friendly, grey water safe and sulphate free.

We are also now a collection point for different items that cannot currently be recycled through your red top bin such as soft plastics, bread tags, post satchels and oral care products and packaging.

Please help us to build a low waste community by supporting these initiatives and looking at ways you can make a difference.

Every little bit helps.

—Hopetoun CRC



# It's Our Life

## GEMS CAPTURED MOMENTS PHOTOGRAPHY COMPETITION

1ST AUGUST UNTIL  
30TH SEPTEMBER 2019



### CATEGORIES & PRIZES

<b>NATURE</b> Category Winner: \$1000 Three runners up: \$100 each	<b>PEOPLE, CULTURE &amp; COMMUNITIES</b> Category Winner: \$1000 Three runners up: \$100 each
<b>HERITAGE &amp; ARCHITECTURE</b> Category Winner: \$1000 Three runners up: \$100 each	<b>JUNIOR (Under 18 yrs)</b> Category Winner: \$500 One runner up \$100

.....

There is a non-refundable entry fee of \$10, which entitles each entrant to a 'Coffee-Table' book of winning photographs. The Competition open at 9.00am on 1 August 2019 and closes at midnight on 30 September 2019. The Competition is open to all residents of the Goldfields-Esperance region. For Competitions details, terms and conditions and entry form, go to [f@ourgemswa](#) or call 0416 232 997.

Supported by Royalties for Regions



Department of  
Primary Industries and  
Regional Development





# Brag about the must-see gems in your town!

This exciting new project from Artgold, Our Gems WA celebrates the arts, culture and creativity in our Goldfields Esperance region.

Our website and accompanying app will provide an invaluable resource for visitors and locals alike to discover and access arts and culture opportunities available from Ravensthorpe to Eucla, Wiluna to Warburton and everywhere in between!

## Website

Designed as a comprehensive directory of all the arts and cultural organisations and attractions across our broad region, with an events calendar for each town. All the information is in one place, easy to update and with easy access for each town.

## Phone App

Complementing the website, the phone app will point out the must-see sites in our region. With engaging features and educational content, the app will get visitors and locals interacting with arts and cultural attractions in our region.

## Training

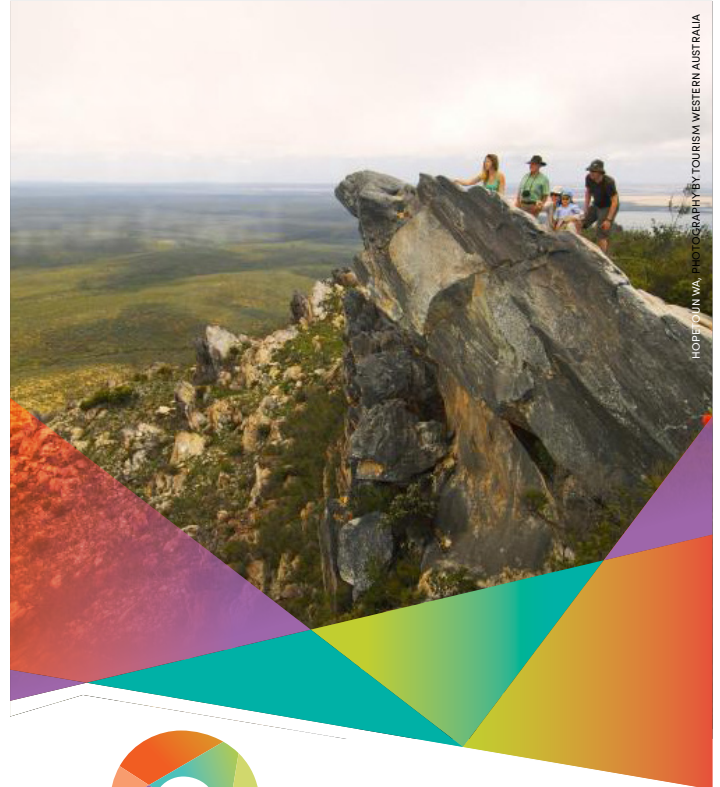
Training opportunities will be available for all Gems participants. From intensive on-the-ground training in your area, to 5 minute mini webinars that can be joined wherever you have an internet connection! We want to connect and upskill our arts professionals.

## How can you get involved?

To make sure your arts practice, attraction or organisation is included in this massive project, head over to the Our Gems WA facebook page and click on "Sign Up". Fill in the form to tell us what's special about the must-see gems in your town!

Visit [www.Facebook.Com/ourgemswa](https://www.facebook.com/ourgemswa) or [www.ourgems.com.au](http://www.ourgems.com.au)

—Donna Malec, Project Manager



# Spring Festival Veggie Competition

## 2019 SPRING FESTIVAL

The vegetable competition run by "Ravensthorpe Homegrown Homemade" will have a wider range of categories this year. This decision was taken due to the lack of water in the district.

The following are the categories for this year's competition.

### PLEASE READ ALL DESCRIPTIONS CAREFULLY.

The first 3 categories have separately judged sections for adults and children (under 12)

1. Most unusual shaped vegetable.

2. Heaviest root vegetable.

3. How many beans in your broad bean.

### The next 2 are for children only.

4. Eggs—The heaviest half dozen.

5. Eggs—The oddest half dozen. (eg. Shape, size, colour etc)

### The remaining categories are open.

6. Vegetable garden harvest display. A box/basket with a selection of the vegetables from your garden. These will be judged on variety and appearance.

7. Bunch of herbs in a vase/jar. To be judged on variety and appearance.

8. Baking—Best chocolate cake with hidden vegetable. You need to specify the vegetable.

9. Baking—Half a dozen muffins – a key ingredient must be a vegetable. Please specify the vegetable.

### The final category has an open (individual) section plus a group section.

10. Fruit and vegetable sculpture. This is the only section which can have some shop bought produce and props.

Keep watching this space and our facebook page for ideas and information.



# CHILDCARE CO-ORDINATOR

## FULL TIME POSITION

The Shire of Ravensthorpe has an exciting opportunity available for an energetic and driven Childcare Coordinator to join our Little Barrens Childcare Centre Team in Hopetoun.

This Full Time position is available with flexible working arrangements. The successful applicants must be highly motivated, team focused, have excellent communication and organisational skills together with a passion for childcare.

A total salary package will be negotiated dependent on qualifications, skills and educator experience as per the Shire of Ravensthorpe Local Government Award 2010 classifications. The salary package includes a cash amount, superannuation, rent assistance, annual leave, uniform allowance and training as required.

Applicants must have or be willing to obtain: -

- Minimum of a diploma in early childhood, or equivalent childcare qualification, a bachelor in ECE is an advantage;
- A current working with children check;
- A senior first aid certificate including anaphylaxis and asthma;
- The ability to take on the role of a nominated supervisor;
- A pre-employment medical including drug and alcohol; and
- A national police clearance.

The Shire of Ravensthorpe Little Barrens Childcare Centre offers a busy team environment with all staff being multi skilled and provided the opportunity to build a career path as an early learning profession.

Potential applicants are encouraged to contact Evelyn Houghton, Manager Childcare Services by calling 0405 171 989 to further discuss the requirements and opportunities for this position.

Applicants must provide a current resume and covering letter of application outlining your suitable experience for the position and why you are interested in this field of work with the Shire of Ravensthorpe.

Applications can be emailed to [ea1@ravensthorpe.wa.gov.au](mailto:ea1@ravensthorpe.wa.gov.au) or posted to PO Box 43, Ravensthorpe WA 6346, and received by 4:00pm on Thursday 8 August 2019, addressed to the Chief Executive Officer, Shire of Ravensthorpe and marked Confidential – CHILDCARE COORDINATOR.

The Shire of Ravensthorpe is an equal opportunity employer.

Gavin Pollock  
Chief Executive Officer  
PO Box 43, Ravensthorpe WA 6346  
Tel: (08) 9839 0000 Fax: (08) 9838 1282



# Adding a bit of Thai spice

## ■ HOPETOUN CRC-THAI COOKING CLASS

On Friday July 12th Hopetoun Community Resource Centre hosted its 4th chapter of the Thai cooking class workshops, presented by our local Thai cooking enthusiast Sumalee. Course attendees were in for a real treat and a whole lot of spice!

The course outline stated that participants would learn to cook a delicious spicy Thai feast, and they were certainly not disappointed!

On deck was:

Mushroom Tom Yum Soup and Beef Massaman Curry

Tom Yum is a type of hot and sour Thai soup, usually cooked with shrimp, and originates in Thailand. The words 'Tom Yum' are derived from two Thai words, Tom refers to the boiling process, while yum refers to a spicy and sour salad. Attendants were amazed by its balance of spicy and sour flavours.

After enjoying the fragrant and delectable Tom Yum Soup, it was onto the main course, Beef Massaman Curry, this is a rich and relatively mild Thai curry dish.

A whole range of different spices and aromatic ingredients are used to make the Massaman curry paste, Thai cooking expert, Sumalee, broke down these ingredients and showed the group how to make their own paste from scratch using fresh ingredients, and where were the best places to purchase these exotic elements.

Sumalee taught her culinary students how to make their own stock from the ground up, using Chinese radish.

Not a scrap was left on anyone's plate after devouring both of these amazing Thai dishes. Everyone walked away feeling full of knowledge, not only knowing the secrets of creating the perfect Thai feast but also on the origins and heritage of the dishes.

Parting ways after the 3 hour workshop, with full belly's, leaves us longing for the next edition of the Thai Cooking Class Series coming next month, watch this space!

And we hope to see you there.

—Hopetoun CRC



## HOUSES/UNITS FOR LEASE

In these towns:-

- Katanning
- Gnowangerup
- Lake Grace
- Newdegate
- Lake King
- Varley
- Ravensthorpe
- Jerramungup
- Bremer Bay

**ENQUIRE TODAY**

(08) 9845 9697 or [admin@advancehousing.com.au](mailto:admin@advancehousing.com.au)



## Did you know?

A bolt of lightning can reach 53,540 degrees Fahrenheit. That's 5 times hotter than the surface of the sun, which is 10,340 degrees Fahrenheit.

There is a village in Russia called Tsovkra where every resident can tightrope walk. It is a tradition that dates back over 100 years but no one knows how it started.



**We are pleased to advise  
that Council endorsed the  
Shire of Ravensthorpe  
2019-2020 Fees and  
Charges at their ordinary  
meeting 16 July 2019.**

Please visit the Shire's web page  
for further information.

Should you have any queries  
please contact the Shire office  
during business hours on  
9839 0000.





## SHIRE OF RAVENSTHORPE

# Notice of Intention to impose Differential Rates

In accordance with section 6.36 of the Local Government Act 1995, notice is hereby given of the intention of the Shire of Ravensthorpe to levy the following differential rates for each rating category for the 2019/20 financial year.

Rate Categories 2019/20	Rate in the \$	Minimum
<b>Gross Rental Valuation</b>		
GRV - Residential	0.117165	\$870.00
GRV - Commercial	0.131567	\$870.00
GRV - Industrial	0.154430	\$870.00
GRV – Transient Workforce Accommodation / Short Stay Accommodation	0.314867	\$850.00
<b>Unimproved Valuation</b>		
UV – Mining	0.083600	\$320.00
Unimproved Valuation	0.008567	\$850.00

The Statement of Objects and reasons for the above rates were adopted for advertising at the Ordinary Meeting of Council on 16 July 2019. These are available for inspection at:

- The Shire of Ravensthorpe Administration Office, 65 Morgans Street, Ravensthorpe between 9am and 4.30pm Monday to Friday.
- The Shire of Ravensthorpe Hopetoun Office, Hopetoun Community Centre, Veal Street Hopetoun between 9am and 2pm Monday to Thursday.
- Shire of Ravensthorpe Website [www.ravensthorpe.wa.gov.au](http://www.ravensthorpe.wa.gov.au)

All submissions in writing with reference to the proposed differential rates should be forwarded to the Shire of Ravensthorpe. PO Box 43, Ravensthorpe WA 6346. Alternatively submissions can be emailed to [shire@ravensthorpe.wa.gov.au](mailto:shire@ravensthorpe.wa.gov.au) by 4pm on Monday 12th August, 2019.

Should you require any further information regarding the above please contact Council's Director of Corporate and Community Services on 08 9839 0000 or email [shire@ravensthorpe.wa.gov.au](mailto:shire@ravensthorpe.wa.gov.au).

Gavin Pollock  
Chief Executive Officer  
18 July 2019

# Conserving Cocanarup and

## ■ COCANARUP CONSERVATION ALLIANCE INC

Many local residents will be familiar with the Cocanarup Timber Reserve, some 15km south-west of Ravensthorpe.

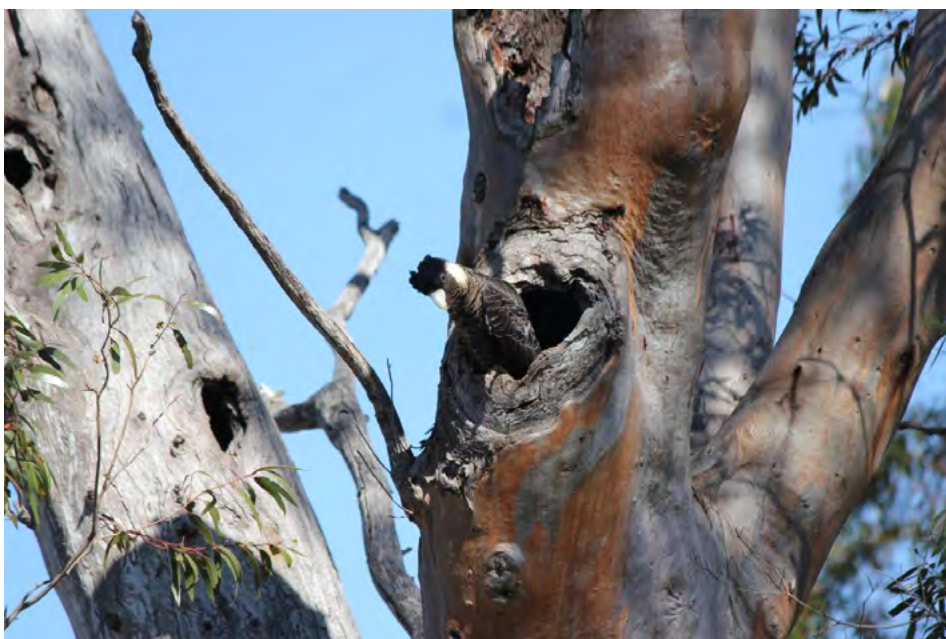
It is much-loved for its magnificent stands of mature salmon gum – and for the central place it holds in the history of the region, with the Dunn brothers settling the Cocanarup Sheep Station there in 1868.

The area was also well-known to Noongar people prior to European settlement, who named the spring in the Phillips River Kukenarup, meaning “place where water always stays”.

The salmon gum woodlands of the area are particularly notable, being the largest intact stand of these gorgeous trees outside the Great Western Woodlands.

Scattered across roughly 1000 hectares, these trees also provide vital nesting habitat for the endangered Carnaby's black-cockatoo.

Indeed, Cocanarup is recognised



■ Female Carnaby's in a salmon gum nest hollow in Cocanarup.

by BirdLife Australia as being one of the three most important nesting sites for this bird anywhere in Western Australia (and therefore, world-wide).

Teams of local residents led by John Tucker and Chris Biddulph have been monitoring nesting activity for at least 12 years now.

They've plotted in excess of 150 nest trees, but there are many more with hollows of sufficient size

which are yet to be examined.

Carnaby's are a big bird, and require large and deep hollows – which makes the very old trees of this area supremely important.

Yet as important and beautiful as the salmon gums of Cocanarup are they are only half the story as far as the survival of the south-east coastal population of Carnaby's goes.

The other half is the foraging area they require to successfully raise their chicks – and this extends out to 12km from their nest sites.

Mapping these crucial feeding zones from 4 key nest clusters shows that this area covers more than half the bushland south and south-east of Cocanarup.

This can be clearly seen on the map included with this article.

Cocanarup – and its surrounds – are clearly crucial to the survival of this endangered species.

The wider area is also home to a number of other threatened fauna species, including the heath mouse, the chuditch, the mallee fowl, the tammar wallaby and, possibly, the numbat (released here in 2006-9).

In addition to its rare extensive stand of salmon gum, the area also



■ A Carnaby's chick surrenders a DNA sample during a DBCA monitoring project, spring 2018.



For decades DBCA and its predecessors have recommended that this area should be a Nature Reserve, one of the two alternatives for Class A Reserve, the other being National Park.

**Cocanarup Conservation Alliance Inc. - Proposed Class A Reserve**

Carnaby's foraging zone from 3 key nest clusters

Great Western Woodlands

Ravensthorpe Range

Ravensthorpe

Cocanarup

Timber Reserve

Proposed Class A Reserve

Kundip

Important Carnaby's roosting & water sites

Fitzgerald River National Park

Hopetoun

Scale: 0 5 10 km

North Arrow

Source: Esri, DigitalGlobe, GeoEye, USDA, USGS, AeroGRID, IGN, SIA, USFIS, and the USGS User Community



# Conserving Cocanarup and its Carnaby's

■ From page 15

This clearly underlines its long-understood conservation values and, not-surprisingly, the Department is supportive of CCA's proposal.

CCA is not opposed to mining as such—and, in particular, is aware of and supportive of the important role lithium plays in our changing world.

It is a question of where such exploration and mining takes place, and the organisation is determined that this will not be in the Cocanarup-Kundip area.

Submissions to the Premier and the Minister for the Environment have drawn a commitment to "investigate reservation of the area for conservation" – and in the light of this CCA has written to the Minister for Mines asking for an immediate moratorium on any further exploration activity while this process is underway.

The Alliance already includes associated organisations such as BirdLife Australia, Gondwana Link, RAIN, the Ravensthorpe Wildflower Show, Ravensthorpe Progress Association and the Friends of Fitzgerald National Park.

Individual membership is growing rapidly with the completion of its comprehensive website – and CCA will now be holding a community information evening on **Monday August 12th at the Recreation Centre, commencing 7 pm.**

CCA is determined to be the vehicle by which the local community can lay claim to this beautiful, important and much-loved landscape – so come along and learn about Cocanarup, its Carnaby's and their conservation for the long term.

For more information or contact details - or to join CCA - go to the website: [www.cca.asn.au](http://www.cca.asn.au)



—Jess Brampton

■ Exploration tracks in Cocanarup salmon gum, June 2017



# Thank you Brenda

It's such a long time ago since Brenda Tink began singing with local choirs that she can't remember when she joined.

Brenda's beautiful alto voice has given endless pleasure at choir practices and public performances.

My personal experience dates back to Brenda and her sister, Ursula, singing "Chapel in the Valley" in the old Ravensthorpe Hall at a talent quest in the late 1960s or early 1970s. Such a memorable occasion for me, and never to be forgotten.

Qualup Choir thanked Brenda and marked Brenda's last choir practice with a gift and afternoon tea at the Red Room on Monday July 8th 2019.

Qualup Choir wishes Brenda and Ron every happiness and fulfilment in their new home in Albany.

—Ann Williams

■ (Right) Qualup Choir Choral Leader Chenda Goldfinch presenting a farewell gift to Brenda at her last choir practice.



## Young people's confidence could be bolstered through an apprenticeship or traineeship

Young people's confidence in the Western Australian economy and their job prospects remains a concern as we enter the new financial year, at the same time that the number of young people in- training for an apprenticeship or traineeship continues to decline.

Apprenticeship Support Australia is delivered by the Chamber of Commerce and Industry WA (CCI), providing support and advice for

employers, apprentices, trainees and jobseekers across the State.

CCI's latest Consumer Confidence Survey has revealed that double the number of young people (18- 39 years) expect weaker conditions than those over 40 over the next quarter.

This is somewhat offset by an increase in the number of young people expecting conditions to improve over the next three months, up 9 per cent

since last quarter.

Apprenticeship Support Australia Manager Ryan Fernie said young people's personal finances and job prospects remain a concern, with only 31 per cent believing their financial situation has improved over the past 12 months and more people believe their job prospects have declined (27%), rather than improved (20%), over the same period.

■ Continued page 18

### Peter Rundle MLA

Member for Roe

Narrogin Office  
PO Box 378  
Narrogin WA 6312  
Ph 08 9881 1225  
Fax 08 9881 3082

Esperance Office  
107 Dempster St  
Esperance WA 6450  
Ph 08 9071 6555  
Fax 08 9071 6788

[Peter.Rundle@mp.wa.gov.au](mailto:Peter.Rundle@mp.wa.gov.au)  
[www.peterrundle.com.au](http://www.peterrundle.com.au)  
@PeterRundleMLA  
facebook.com/PeterRundleRoe

**THE NATIONALS** for Regional WA

## CONCRETING MARK CAMERON CONTRACTING

All aspects of concrete  
Supply and lay with onsite mixing in the  
areas of Hopetoun & Ravensthorpe.

Contact Mark 0429 653 031

# Busy times at CRC...

## ■ RAVENSTHORPE CRC

The busy schedule at the CRC continues with a few key events to mark down in your diaries.

### Be Connected:

Did you know that there are big changes to the Pensioner Free Travel scheme next year as both the Department of Veterans' Affairs (DVA) and Centrelink (Department of Human Services - DHS) will not issue WA Pensioner Free Trip Vouchers from the end of this year? Your vouchers will now be managed and accessed electronically and pensioners will need to register with Transwa.

Come along to this free session and learn how to register your Transwa Pensioner Free Travel.

Date: Wednesday 14th August

Time: 10am Morning Tea, 10.30 - 11am Registration information session

### Courses:

Through our partnership with South Regional TAFE we have:

- Intermediate Excel Spreadsheet course  
Date: September 23-24th
- AusChem Accreditation course.  
Date: October 3-4th.

There are limited places for each course so register early to secure your place and if there is a high demand we can run them again at a later date. Just let us know!

## Galaxy Country Carnival and Street Parade:

The Galaxy Country Carnival and Street Parade is on again, September 14th with a jam packed day! All your favourites from last year will be happening, face painting, bouncy castles, petting zoo, market stalls, wine tasting, food vendors, fireworks plus Fashion through the Ages, High Tea and lots more! If you have any clothing from the 40's, 50's or 60's that you would like to include in the Fashion Parade let us know. To register for a Market Stall, enter in the Street Parade or pre-purchase your tickets jump on our website <https://www.ravensthorpe.crc.net.au/> go to the Country Carnival tab and book.

### Weekly:

Story Time is on every Monday morning, 10am during term time.

Study with a Buddy every Monday afternoon, 3-5pm with afternoon tea included.

Chat round Cuppa is on every Tuesday morning @ 10am, so feel free to call in for a cuppa and chat. We'd love to see you!

Join our Facebook page to keep up to date with what's happening and we hope to see you here @Ravensthorpe CRC!



Ravensthorpe

Saturday 14th September, 2019

Facebook: <https://www.facebook.com/countrycarnival/>

Instagram: [galaxy\\_country\\_carnival](#) #countrycarnival

## Young people's confidence could be bolstered through an apprenticeship or traineeship

### ■ From page 17

"Almost two out of five young people's (37%) spending exceeded their monthly income, 22 per cent experienced a period of unemployment and 26 per cent were unable to pay their bills on time over the past three months," Mr Fernie said.

"These concerning results come on the back of the latest National Centre for Vocational Education Research, which found that the number of people aged 20-24 in-training has declined by 11.5 per cent over the four years to December 2018 and by almost 37 per cent for those aged 25 to 44.

"Apprenticeships and traineeships

offer the flexibility to combine training with work and will help ensure we have a skilled workforce that remains globally competitive. It's critical that our young people know what opportunities are available and how to access them.

"We shouldn't be in a situation where we have a youth unemployment rate of 11.2 per cent and over a quarter of our young people expecting their job prospects to worsen when there are more than 500 apprenticeship and traineeship qualifications available in almost any field, from business services and hospitality to plumbing and carpentry.

"There are a range of benefits and financial incentives available to

eligible employers of apprentices and trainees, and with the new financial incentives available from 1 July 2019, eligible employers could receive up to \$20,000 in State and Federal Government Incentives.

"Nationally, employment prospects for apprenticeship and traineeship graduates are at almost 80 per cent, and for those completing trade certificates are even stronger at 91 per cent, presenting significant opportunities for our young people to take up."

For more information on apprenticeship and traineeship opportunities, visit [www.apprenticeshipsupport.com.au](http://www.apprenticeshipsupport.com.au) or call 1300 363 831.



# Calling on country WA girls to push the barriers

Trailblazers across rural and remote Western Australia will have an opportunity to win a once-in-a-lifetime 'Power Trip' to the nation's capital through an initiative being announced today

Country to Canberra's prestigious 2019 Leadership Competition will award at least 15 young women with a chance to breakdown barriers with politicians and CEOs, leadership and public speaking training, a tour of Parliament and much more.

Country to Canberra CEO Hannah Wandel says it's about encouraging young rural women to step outside of their comfort zone and advocate about issues that they care about.

"From Tanya Plibersek to Prime Minister Scott Morrison, past winners have met with inspiring leaders, built self-confidence, and have gone on to make an incredible impact in their local communities.

"It's important to speak up about the things you believe in. Our competition and Power Trip is about giving young women a national platform to make their voices heard," Ms Wandel said.

To enter, Country to Canberra is asking girls to submit a 2-minute video or 400 words answering a question about Overcoming the Odds: how do we push through the barriers to achieve gender equality.'

"This year's question is all about driving change," Ms Wandel said.

"Only 35% of federal politicians are female, women earn around \$239 less than men each week, and we still have huge issues



■ 2018 Power Trip Winners and CEO Hannah Wandel at Parliament House.

when it comes to violence," Ms Wandel, who is also the 2019 ACT Young Australian of the Year said. "Meanwhile, social media has caused a huge wave of issues."

"We target high school because it's a critical time in a young woman's leadership pathway.

"We also know that distance, time and funding barriers can make life tough for rural students, compounded by the current drought. Country to Canberra provides access to training and ongoing mentorship, no matter a girl's background or circumstance."

2018 WA winner, Sophie Luscombe praised the initiative's impact. "I loved meeting with the other winners and building up my skills! I would strongly recommend that every young woman out there to



■ 2018 Power Trip Winners with Prime Minister Scott Morrison.

give it a go," she said.

Ms Wandel is encouraging all eligible rural students in grades 10-12 to take part.

"This could be the kick-start you need for your future career."

For further details visit [www.countrytocanberra.com.au](http://www.countrytocanberra.com.au). Entries close 11pm AEST, September 2nd, 2019.



**DISTRIBUTOR**

**NEWDEGATE  
STOCK &  
TRADING**

Ph: 9871 1556  
MOB: 0428 711 556

24 hours fuel at Newdegate

**FOR ALL ON FARM  
DELIVERIES OF FUEL**

# Soil moisture monitors lift the veil on the root zone

## ■ CLIMATE KELPIE

While farmers are often adept judges of crop and pasture yield potential, soil moisture monitoring technology now provides concrete data on plant available moisture to help drive decision making.

Real time data from Agriculture Victoria's soil moisture monitoring probes is available online for 17 cropping and 18 pasture sites around the state. Farmers can use the interactive website to track soil moisture throughout the year, evaluate the effectiveness of rainfall events and help them with decisions such as sowing programs and in-crop fertiliser application.

Already proven in irrigated situations, the probes were first installed in dryland cropping sites as part of a pilot program to test their value in identifying important management triggers. The probes were established in conjunction with local cropping groups to inform discussions about soil moisture reserves and seasonal risk.

### Cropping sites

The pilot program clearly demonstrated the value in better understanding the subsoil situation. By comparing data with land management activities, growers were able to confirm their estimates of crop potential, and in turn make better decisions.

For instance, the monitoring site near Brim in North Western Victoria suffered from a lack of moisture throughout the 2018 season and data from the probes showed that there was not enough soil moisture to finish a grain crop. This information convinced the grower that cutting for hay was the most informed decision, allowing him to conserve the little soil moisture that remained.

Following a solid 100-millimetre plus rainfall event during a December storm, soil moisture data from the probes showed excellent recharge of the system with the moisture infiltrating a full metre to fill the profile.

The cropping probes provide soil moisture and temperature at 10 centimetre intervals from 30cm to 100cm depth, as well as rainfall at the site, providing growers with a good understanding of total soil moisture and where it is in the profile.

"Experience with grower groups has shown that these probes enable more informed decision making," says Agriculture Victoria agronomist Dale Boyd. "They give growers a better understanding of how much moisture the soil can hold and are being used to guide crop selection. We've even seen growers use the data to decide whether to sow a longer or shorter season variety."

"The probes have proven invaluable for the farmers hosting them. But the information is also of interest to others to get a sense of how the season is progressing," he says.

"Growers can also access our interpretation of the data through the Agriculture Victoria Soil Moisture Monitoring newsletter that we email to subscribers throughout the growing season. It helps them to better understand seasonal



■ The soil moisture monitoring network has recently expanded to include pasture sites. Source: Dale Boyd.

conditions and is another tool to inform their own decision making."

### Moving on to fresh pastures

Now the system is being deployed in pasture paddocks to serve the dairy and meat and wool industries.

Again, working with farmer groups the Agriculture Victoria team aim to get a better understanding of the sort of soil moisture triggers that could be used to better manage pasture growth and availability throughout the season.

"The pasture sites are in the higher rainfall areas where it is temperature, rather than soil moisture, that is likely to be the limiting factor for pasture growth throughout the winter," says Mr Boyd. "For this reason, we have installed the temperature and moisture sensors starting at 10cm to help understand the impact that soil temperature has on growth potential."

Already the probes have revealed some surprising information about the potential of different pasture species to access soil moisture at depth. Perennial ryegrass has always been considered shallow rooted, but early data from the soil probes has shown perennial ryegrass pastures able to extract soil moisture from as deep as 60 to 80 cm at some sites.

"It is good to see that perennial ryegrass can use moisture from deeper in the profile to survive dry periods, but the all-important dry matter production is still more dependent on utilising shallow soil moisture. We look forward to learning more about our pasture sites in the coming seasons," says Mr Boyd.

"We hope to use the probes to better understand how seasonal conditions can impact on pasture growth and what information will help inform better decision making around stocking rates and feed budgets. We will be looking to identify the triggers that drive season length and the potential to adjust inputs such as nitrogen or plant growth hormones."

Access to the soil moisture monitoring site data and industry-specific email newsletter is available on the Agriculture Victoria soil moisture monitoring pages for dryland cropping areas and pasture areas.



# Whole package approach to soil constraints advised for WA

■ GRDC

Significant research into western region soils has identified new best practice approaches to remedying an array of soil constraints.

Methods such as applying gypsum can address soil sodicity issues, while early results from combining and incorporating some gypsum with lime on an acidic sandplain site at Kalannie has the potential to increase grain yield by up to 30 per cent.

Department of Primary Industries and Regional Development (DPIRD) research officer Dr Gaus Azam says these results warrant ongoing research to identify the mechanisms involved.

In another set of trials, which were run by DPIRD senior research scientist David Hall, gypsum was shown to improve sodic soils which have an exchangeable sodium percentage of 10 or above and improve the structure of the soil.

These findings are among those confirmed by a suite of research conducted as a part of a \$33 million GRDC and DPIRD investment addressing western soil constraints. The research specifically targeted the four main soil constraints affecting WA growers in soil acidity, soil sodicity, compaction and water repellence.



Kalannie grower Bob Nixon and DPIRD researcher Dr Gaus Azam in the graveyard trials looking at root growth responses to amelioration and improved soil pH. Photo: Evan Collis

Project manager and DPIRD soil science and crop nutrition portfolio manager Chris Gazey and research officer Stephen Davies [detail the range of outcomes from the investment in a GRDC podcast](#).

In it, they highlight that these methods should be viewed as a whole-package approach, given many growers face multiple soil constraints.

■ Continued page 23

## MAKE THE MOST FROM YOUR FERTILIZER INVESTMENT



**Tim Donkin**

0408 092 355

[tdonkin@summitfertz.com.au](mailto:tdonkin@summitfertz.com.au)

[www.summitfertz.com.au](http://www.summitfertz.com.au)

Fuel Gauge strips provide real-time, specific and local response information for in-season nutrient decisions.

Talk to me about the use of N, P and K strips to monitor crop nutrient usage and availability.

Make sure your crops make the best of every season.

**SUMMIT**   
QUALITY TECHNICAL SERVICES

**SUMMIT**  
**FERTILIZERS**

**VIGOUR**

**MAPSZC**

**DAPSZC**





1. What colour is the inner cross on the national flag of Iceland?
2. What did Tchaikovsky say that the swan in Swan Lake represented? Anger, Purity, Kindness, Womanhood
3. Which of these is not a variety of Yam? Yellow, Bittercress, Lucy, Moonshine
4. On a QWERTY keyboard which letter lies between A and D?
5. Complete the name of a famous variety of Tomato: Ailsa....? Kevin, Carl, Craig, Ken
6. Bill Corgan is the lead vocalist with which 1990s band? Smashing Pumpkins, Third Eye Blind, Red Hot Chilli Peppers, Gin Blossoms
7. Marcha Real is the national anthem of which country?
8. What type of creature is an inca?
9. What year saw the release of Disney's Lady and The Tramp? 1975, 1965, 1945, 1955
10. Which Hollywood actress and gossip columnist debuted as a host of her own radio programme in November 1939?
11. Which one of these is not considered one of the "Gas Giants"? Uranus, Mars, Saturn, Jupiter
12. How many players are on the field in a hurling team?
13. Which planet boats 2 rings, thought to be the result of a moon impact? Saturn, Jupiter, Neptune, Uranus
14. Which golfer, known for his garish attire, tragically died in a bizarre flying accident in 1999? Corey Pavin, Craig Stadler, Bill Rogers, Payne Stewart
15. Which of these artists would you associate with the "Ecole de Paris"? Kahlo, Miro, Manet, Chagall
16. Where would you find Traux Field Airport? Dakota, Wisconsin, Raleigh, Washington
17. What is the name of the character played by actor Neil Burgess in the television commercial for cleaning product Cillit Bang?
18. What is the name of Siegfried Farnon's younger brother in the UK television series 'All Creatures Great and Small'?
19. The Molotov-Ribbentrop Pact, signed in August 1939, was between which two countries?
20. Which British luxury brand has a logo featuring an equestrian knight and the Latin word 'Prorsum'?
21. Who composed the music for The Dream (in ballet)? Igor Stravinsky, Felix Mendelssohn, Leo Delibes, Pyotr Tchaikovsky

22. In the human body, the hallux is more commonly known by what name?
23. Vladimir Kramnik became World Champion in November 2000 in which game?
24. In the US, which state lies to the west of New Hampshire?
25. Basorexia is a strong desire to do what to a person?
26. Jess Wright, Chloe Sims, Lauren Pope and James Argent all appear in which British Television reality show?
27. How many points are scored for a penalty goal in a game of rugby league?
28. What is the name of Rose Tyler's boyfriend in the UK television series 'Doctor Who'?
29. Gingernut Ranger is a breed of which creature?
30. What does the Latin Phrase 'Scientia est potentia' translate to in English?
31. In January 1994, which member of the British royal family was the first senior royal to publicly convert to Catholicism, the first for more than 300 years?
32. Wyneb is Welsh for which part of the body?
33. Who spent 6 weeks at the top of the US Charts with "Ain't it Funny"? Madonna, Alicia Keys, Beyonce, J-Lo
34. Enero is Spanish for which month of the year?
35. Which US businessman funded the Standard Oil Company?
36. Which bone is the longest in the human skeleton? Fibula, Femur, Ulna, Tibia
37. Which singer released a 2013 song called 'Yellow Raincoat', which is supposedly about his former girlfriend Selena Gomez?
38. By what name is Prince Philip, the Duke of Edinburgh, known in the satirical magazine 'Private Eye'?
39. Which of these was the title of a notable Kazimir Malevich work? White on White, Blue on Pink, Black on White, Red on Cream
40. The ancient Tablet of Ammisaduqa shows an early awareness of which planet? Jupiter, Mars, Mercury, Venus
41. Woodford airport is located near which British city? Edinburgh, Manchester, London, Cardiff
42. Turkey, Clover, Nadler and Gutter are all terms used in which game?
43. Agnus Dei is a figure of which creature as an emblem of Christ?
44. Serratus Posterior is a part of which area of the human body? Back, Chest, Arm, Legs
45. What does the term 'cabriole' mean (in ballet)? Dance, Fast, Step, Caper
46. Alektorophobia is the fear of which birds?
47. Which English author wrote the 1928 novel 'Orlando: A Biography'?
48. Clidro, Pipeline and Backdoor are terms that are used in which sport?
49. Johnny Depp provides the voice of the lead character in which of these animated films? Happy Feet, Madagascar, Ice Age, Rango
50. Which English monarch was the brother of King Edward IV?

■ Look for the answers in the next issue of Community Spirit

ANSWERS FROM ISSUE 12: 1. World War I; 2. Venus; 3. Idlewild Airport; 4. Mercury; 5. Mariah Carey; 6. 15th; 7. Grape; 8. Fruit; 9. Yorick; 10. -40 degrees; 11. Braille; 12. Friday; 13. Netherlands; 14. Cauliflower; 15. Bach; 16. Manet; 17. First; 18. Head; 19. Billionaire; 20. Rory McIlroy; 21. Yeast; 22. Thoracic Vertebrae; 23. Iceland; 24. Lexus Cup; 25. Horse; 26. Geraldine; 27. Cabbage; 28. Rastafari; 29. 668; 30. King Charles II; 31. Thomas; 32. Switzerland; 33. Buddy Holly; 34. Australia; 35. Russia; 36. Coconut; 37. Fanny Brice; 38. Pierre de Coubertin; 39. Drums; 40. Six; 41. Margaret Thatcher; 42. Trombone; 43. Henry V; 44. Winston Churchill; 45. 2; 46. William Hague; 47. Genghis Khan; 48. Professor Longhair; 49. Bird; 50. Sirhan Sirhan

# Whole package approach to soil constraints advised for WA

■ From page 21

## Do you understand your soil constraints

Some of the many and varied options proven useful for growers to consider when addressing their soil constraints have included a focus on inversion tillage, deep ripping, lime incorporation, gypsum application, water harvesting, improved mapping of soil constraints and the development of decision tools.

Mr Gazey believes outcomes from this range of projects will better equip WA growers to understand how and why their soils are restricting plant growth. Among the resources developed to assist growers in decision-making for their soil constraints is the [MySoil diagnostic tool](#), which classifies 15 broad soil types in WA and provides information distinguishing features of each soil type.

## Compaction

Economists estimate compacted soils are costing WA growers up to \$54 per hectare in lost yield potential annually. DPIRD research officer Wayne Parker says analysis of hundreds of paddocks across WA has shown all soil types suffer compaction, with sandy soils the most affected.

Mr Parker details options for growers to address their compaction issues and how compaction is limiting their crop yield potential in a [GRDC podcast](#).

He says research investigating the value of deep ripping with and without top soil inclusion showed almost all soils responded and often for several years. Latham grower Dylan Hirsch's deep ripping program is one example of success with this technique and his journey is [summarised in a GRDC video](#).

## Water repellency

About 10 million hectares – just over half of WA's wheatbelt soils – are expected to display some level of water repellency, with the popularity of dry seeding and minimum tillage farming practices exacerbating the issue.

Dr Davies says paired row or near row sowing on sandy soils has consistently resulted in a 50 per cent improvement in crop establishment, translating into 20 per cent increases in yield.

He also suggests banded wetters as a way to increase yield in forest gravel soils, with trials showing potential for up to 15 per cent yield increases. However, this method has little consistent success on deep sandy soils.

More information on this method and other tested techniques from the Soil Constraints West project are [detailed in a GRDC podcast with Dr Davies](#).

Corrigin grower Simon Wallwork tested soil inversion with a mouldboard plough as a form of soil amelioration and was able to improve water penetration and yields on his own property.

## Grower's approach to overcoming non-wetting soils

A review of ten years' worth of research data showed that average cereal grain yield responses in the first few years after soil inversion ranged from 30-60 per cent and 20-30 per cent higher yields were sustained over the longer-term.

## Acidity

In Dr Azam's work to understand soil acidity, lime applications were tested with and without incorporation to discover its link to aluminium toxicity and the effect on plant root growth. This also included the use of gypsum and lime together to address a common belief that the addition of gypsum will move lime through the soil profile faster.

Results show the best responses to lime come from deep incorporation at 250 millimetres or deeper as seen in figure 1. A combination of removing compaction (incorporation only) and lime to depth gave the best results. In other work, the combination of lime and gypsum increased yield by up to 30 per cent.

However, Dr Azam says gypsum can only be used on suitable soils as it does not directly increase soil pH and can slightly acidify some sandy soils if applied at a higher rate. He says this is an area for ongoing investigation to allow more accurate advice to be provided to growers. Project funding for research into soil acidity will continue until 2021.

■ Continued page 25

**Community Events Notice Board**

The Community Spirit is your community based newspaper, covering local news and events. We are pleased to support local events

**TERMS & CONDITIONS**

1. Posters are to be in **Black & White (Mono)** only.
2. Design must be **completed by client** and submitted as a JPEG or PDF.
3. Are to be for a **Local Community Event** only.
4. To be placed on Notice Board at Community Spirit discretion.
5. Notice Board is free providing there is to be a follow up article for the paper after the event. If no article provided then group will not be allowed this space again.
6. There is limited area for the Notice Board so first in will get the space.

For further information please contact the Community Spirit Communications Manager on [0408 840 447](tel:0408840447)

**Looking for the Community Transport Vehicle Coordinator number to book your next specialist appointment?**

Call Chelle on [0439 335 147](tel:0439335147)

# LOOK LOCAL

Most phone numbers, email and web addresses on this page are hyperlinked.  
Just click on it on your smart device to contact the business.

## AGRICULTURAL SUPPLIES

### RAVENSTHORPE AGENCIES

**BERNIE & ROZ BIDDULPH**  
44 Morgans Street (PO Box 126)  
RAVENSTHORPE WA 6346  
PHONE: (08) 9838 1236  
FAX: (08) 9838 1206  
MOBILE: 0429 381 236  
EMAIL: ravyag@westnet.com.au



Fencing ▶ Batteries ▶ Oils & Lubricants ▶ Chemicals & Fertilisers  
▶ Water Pumps ▶ Water Tanks ▶ Water Pipe & Fittings  
▶ Dog & Cat Food ▶ Workwear & Boots AND HEAPS MORE!

## AUTOMOTIVE

# EMG

**ESPERANCE MOTOR GROUP**  
**Service, sales, used and new vehicles**

ESPERANCE MOTOR GROUP PTY LTD  
Cnr Norseman & Sheldon Roads, Esperance  
Ph (08) 9071 0100 • Fax (08) 9071 0129

## BUILDING SERVICES



**HOPETOUN GARDEN AND PROPERTY SERVICES**  
Our Professional Building Services  
• Building Maintenance • Shed Tidy Ups  
• Carpet Cleaning • Floor Tile Cleaning  
• Upholstery Cleaning • Exterior Wall Cleaning  
• Gutter Cleaning • Window Cleaning • PVC Blind Cleaning

**CALL DONNA AND ALAN FOR A QUOTE ON 0400 716 885**  
Email: hopetoungaproperties@icloud.com  
ABN: 65467395097

## CRANE

# HOPETOUN MOBILE CRANE HIRE



**20 tonne Franna**  
**Steve Williams 0427 282 116**

## EARTH MOVING

**GP&DR Belli**  
**Mini Earthworks**

WE DO:  
• Chain Trenching (Back Hoe attachment) • Slashing • Filling and leveling  
• Pads • Post holes and footings with augers to 900mm Diameter,  
• Rotary Hoeing • Retainer Walls • Site, Yard & Stockyard Clean Up  
• Landscaping • Sand, Gravel & Loam Supplies • Tip Truck & Hiab Hire

For enquiries contact: Greg or Di  
**Mob: 0427 027 003**



## EARTHWORKS

# HOPETOUN EARTHWORKS

• Earthworks • Trenching • Siteworks  
• Clearing • Septic • Bobcat & Backhoe Hire

**Ph: 9838 3336**  
Fax: 9838 3360 Mobile: 0427 383 336  
Supply & Laying Ready Mixed Concrete

## HAULAGE

# HALLAMS CARTAGE CONTRACTORS

Specialising in:  
• Water Cartage • Grain Carting  
• General Freight • Wool Cartage  
• Side Tippers • Gravel & Sand  
• Roller Hire • Low Loader Hire

**Kevin Ph: 0429 049 114**  
email: hallamscartage1@bigpond.com



## LEGAL

# LANSELL LEGAL

FOR ANY LEGAL ISSUE CONCERNING MEMBERS OF THE LOCAL COMMUNITY.

Monthly visits and 24/7 telephone advice from Phil's office in Perth.

pvlans@bigpond.com  
PO Box 4189 Mosman Park  
Or locally at 16 Culham Street Hopetoun

**Website at [www.lanselllegal.com.au](http://www.lanselllegal.com.au)**  
Liability Limited by a Scheme Approved under Professional Standards Legislation

## MASSAGE



**Remedial Massage & Bowen Therapy**

**Glenys-Joy Brown 0428 502 097**  
Health Rebates Available

## MASSAGE

# AS SMART

Remedial and Relaxation Massage  
(Remedial Therapy is claimable)  
Member of AMT  
Specialist Techniques in Pain Management  
For all muscular aches and pains

LET OUR EXPERIENCE WORK FOR YOU!  
**0428 422 368**  
www.smartremedialmassage.com.au  
2/51 Dempster St, Esperance



## PAINTING



**PAINTING**  
Reg. #4709  
Domestic, Commercial, Industrial,  
Farm Painting Specialty  
Clean, Precise and Quality work.  
Local references available.  
For FREE Quotation and Booking  
Call Mick  
**0419 701 332**

## PLUMBING

# 4 RIVERS PLUMBING & GAS

**0407 358 983**  
PL 923 & GF 002820

# DISCOUNT RATES

The Community Spirit now has discounted rates for Not-for-Profit groups of 15%

If Not-for-Profit groups would like to receive any further discounts then please contact the committee to request it. The Committee is happy to sponsor large local events, but need advance notice to discuss the amount of the discount.

**ADVERTISING CLIENTS:** Receive a discount of 5-10% if you sign up for a 6-12 month period and if you are prepared to provide submissions for the paper.

For either of these great deals please don't hesitate to contact Kylie at [contributions@cospirit.net](mailto:contributions@cospirit.net)





**LOOK LOCAL**

Most phone numbers, email and web addresses on this page are hyperlinked. Just click on it on your smart device to contact the business.

## RESOURCE CENTRE



**Hopetoun Community Resource Centre**  
Your local connection  
46 Veal Street Hopetoun WA 6348  
P: 08 9838 3062 F: 08 9838 3590 E: hopetoun@crc.net.au  
www.hopetounwa.com

- Visitor Information Centre
- Internet Access & WiFi
- Photocopying & Faxing
- Professional Photo Printing
- Government Access Point
- TransWA Bookings
- Public Library
- National Park Passes
- Room Hire
- IT & Office Supplies
- Training Courses
- Handmade Gifts

## SHED BUILDING



**Armand Javellana**  
Business Owner

**AUSSIE SHEDS ALBANY**

*Better choice  
Better quality  
Better price*

f @aussieshedsalbany  
Mobile: 0421 583 757  
Email: Aussieshedsalbany@gmail.com

## SMASH REPAIRS



**Albany Smash Repairs**

**Paul Armstrong**  
Proprietor

Tel 9842 2838  
Fax 9841 6131  
paularmstrong@smashrepairer.com

14 Prior Street, Albany WA 6330 • A/h 0418 936 010  
• All Makes & Models • All Work Guaranteed  
24 Hrs Towing

## TYRES



**HOPETOUN TYRE SERVICE**

**GOOD RANGE OF**

- Car • 4x4 • SUV Tyres
- Truck & Tractor Tyres
- Century Batteries
- Mobile Service

Contact Mary or Stephen  
0407 313 062 or 9838 3156

## Farming News

# Whole package approach to soil constraints advised for WA

■ From page 23

### Sodicity

Mr Hall says declining soil structure and the development of salinity in WA soils are felt largely in heavy clay soils of low-rainfall regions, but can also be a problem in higher rainfall areas.

Gypsum is recommended for growers with sodic soils which have an exchangeable sodium percentage of 10 or above in the top 30 centimetres of soil. Yield benefits were also gained from mulching and manure injection, but Mr Hall says there needs to be more efficient application strategies developed before this can be a cost-effective option.

Mr Hall says yield responses of between 30 and 90 per cent were achieved in the trials looking at the creation of mounds and furrows for

water harvesting purposes. DPIRD research officer Dana Mulvany worked closely in this area over the past five years and [discussed the details of this approach in a GRDC podcast](#).

### Ongoing research

While the Soils Constraints West Project has ended, a new \$48 million co-investment by both GRDC and DPIRD is set to continue work in this area.

The new research will have three areas of focus. These include: The yield potential of WA soils where all constraints have been removed; Preserving this potential using agronomic tools, such as controlled-traffic farming and crop rotations; and Water harvesting strategies in heavy soils, particularly those in the eastern wheatbelt

## Public Notices

### SWANS VETERINARY SERVICE

Morgans St, Ravensthorpe  
Tuesdays by Appointment  
Phone [9071 5777](tel:90715777)

### HOPETOUN MEN IN SHED (INC)

## Annual General Meeting

Thursday August 22, 2019  
Hopetoun Men's Shed, 80 Tamar Street, Hopetoun

Election of Office Bearers – All positions are open  
Darryl Quinn, President

### MT SHORT AERO CLUB

## AGM

**Tues 13th August at 7pm**  
at John & Margaret Roys home,  
90 Gordon Rd, Ravensthorpe

Following AGM a special meeting to pass a special resolution to adopt new model rules.

### ALL WELCOME

Any queries please contact Treasurer/  
Secretary Ros Giles [0429 389 031](tel:0429389031)

To advertise in your local paper contact  
Kylie on 0408 840 447  
or email [contributions@cospirit.net](mailto:contributions@cospirit.net)

## Disclaimer:

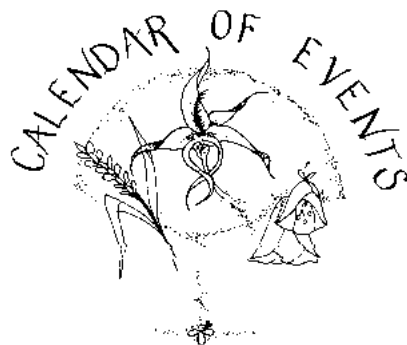
1. No liability shall be incurred by Community Spirit by reason of any amendments to, or error or inaccuracy in, or the partial or total omission of an advertisement, or by reason of delay or default or from any other cause whatsoever.

If in the opinion of Community Spirit the error clearly reduces the value of the advertisement and the advertiser notifies it to Community Spirit within seven days of the publication date, then no charge will be made for the advertisement containing the error.

2. While the Compilers normally aim to publish all material submitted if space is available, Community Spirit reserves the right to refuse to publish or republish any contribution or advertisement without giving any reason.

3. No articles, letters or advertisements will be accepted which may appear to be defamatory or accusatory, or to favour one side in a legal dispute.

4. Community Spirit reserves the right to shorten or otherwise amend any contribution other than advertisements. Articles from a Not for Profit organisation regarding past events that thank sponsors within the body of the article, will be free of charge.



## UPCOMING EVENTS

### August

- 1 Scam Awareness & Consumer Protection Session, 1-3pm, Hopetoun CRC
- 2 Labour and Birth Telehealth Class, 2-3pm
- 2 Club Merlot
- 4 Book Launch, 5pm Hopetoun Community Centre
- 9 52 Hertz (RRAC)
- 9 Community & Employment Expo, 10am-2pm, Hopetoun Community Centre
- 9 Pain Relief & Birth Interventions Telehealth Class, 2-3pm
- 12 National Science Week-Moon Rocks, 10-10.45am, Hopetoun CRC
- 12 Spicy Thai Cooking Lesson, 6pm, Hopetoun CRC
- 13 Southerners General Meeting
- 14 Official Opening Culham Inlet Crossing
- 15 National Science Week-Moon Harvest, 10.30-11.30am, Hopetoun CRC
- 16-31 National Science Week-Many Moon Exhibition, Hopetoun CRC
- 16 National Science Week-To the Moon and Back, 5.30-8pm, Hopetoun CRC
- 16 Postnatal Care & Early Parenting Telehealth Class, 2-3pm
- 23 Comedy Show (RRAC)
- 23 Breastfeeding Telehealth Class, 2-3pm

### September

- 1 Hopetoun Markets
- 3 Ravensthorpe Community Centre General Meeting, 4-5pm, Ravensthorpe CRC
- 6 Club Merlot
- 7-8 Len Metcalf Photography Workshop for a day and a half of photography and learning on this intensive workshop. Hopetoun CRC
- 9-21 Ravensthorpe Wildflower Show
- 10 Intro to Backyard Beekeeping, 10am-1pm, Hopetoun Community Resource Centre
- 18 Snake Bite First Aid Demo, 10-11am, Hopetoun Community Resource Centre
- 23-24 Excel Spreadsheet Workshop, Ravensthorpe Community Resource Centre

For contributions to the Calendar of Events email the details to [contributions@cospirit.net](mailto:contributions@cospirit.net)

## REGULAR EVENTS

### HOPETOUN

**BOOTS COOTING** Fridays 1.30 til 3.30 at Mary Ann Haven, Veal Street Hopetoun please Phone Rosa 0428 383 034 or Trix 9838 3378.

**BOWLS** Wednesday Ladies 8.45am, Mixed Scroungers 1pm, Thursday 9.30 am Coaching with Coral. Friday 4pm Roll up and fun. Sunday 1pm Social Bowls. Everybody welcome.

**CRAFT** Mondays from 1pm at Mary Ann Haven, all welcome.

**CRC, Library & Visitor Centre** Open Monday to Friday 9am to 4pm. Saturdays 10am to 12pm (Visitor Centre only). Committee Meetings bi-monthly, ask at CRC.

**CWA** 2nd Monday 1.30pm at Centre

**CWA SHOP** Saturdays 8.30 to 11.30. Library, secondhand goods, fresh vegetables, fruit, eggs, cakes and pies, honey, jams, and relishes, Asian food.

**FIRE BRIGADE TRAINING** Last Sunday of every month at Emergency Services Building, Veal St.

**GOLF** Saturday Ladies and Men's Golf 18 holes - Winter season names in by 11.30 Tee Off 12 noon, - Summer Season names in by 12 noon Tee Off 12.30. Thursday Scroungers Ladies and Men's Golf 9 or 12 holes depending on the weather, names in by 1.15 Tee Off 1.30. Visitors and Learners are always welcome.

**HACC HEALTH SERVICE** Day Centre Program, Tuesdays, alternating weekly between Hopetoun and Ravensthorpe. Contact HACC for details.

**HOPETOUN LOCAL MARKETS** first Sunday of each month except June, July and August when the markets go into recess for the winter. Ray White Real Estate outside area at 9am to 1pm. January markets will also be the first Sunday of the month. Please contact Robyn Cockram 0429 925 569 or cockram36@gmail.com for more details

**HOPETOUN PROGRESS ASSOCIATION** Tuesday - Friday 9am till 2pm. Phone/fax 9838 3363. Monthly meeting last Tuesday of the month 7.30.

**MACHINING GROUP** Thursdays phone Wilma 9838 3098 or Mary 9838 3243.

**MEN IN SHEDS** Tamar St Tues & Thurs 8.30am-12, 1-3pm and Sat 8.30am-12pm. All men welcome contact Darryl Quinn 0428 442 517.

**MEN'S STAY ON YOUR FEET** Tuesday and Thursday, 9-10am at Men's Shed, Tamar St.

**OLD BASTARDS CLUB** Men only BBQ, Fridays. Contact Geoff Earl 0418 905 555 for details.

**POOL COMPETITION/DARTS** Wednesdays 7.30pm Port Hotel.

**POOL COMPETITION** Wednesday 7pm Wavecrest Bar and Bistro.

**SEA SEARCH AND RESCUE** Monthly training at Emergency Services Building, as indicated by regular signage on Veal St.

**SENIOR CITIZENS** Thursday 1.30 pm. Meetings 1st Thursday every second month from June, 10 am at Mary Ann Haven.

**SOUTHERN SCRIBES** Fourth Saturday 1pm, phone 9838 3472.

**STAY ON YOUR FEET** Tuesdays & Fridays 9am-10am Mary Ann Haven.

**STORYTIME** Every Monday 10am (except school and public holidays) at Hopetoun Public Library (inside Hopetoun CRC) Free stories, songs, rhymes and craft. Suitable 0-5y.

**WINDSPRAY ART** We meet every Thursday 10-2 at 65 France St. New members ALWAYS most welcome to join us. Watch CRC notice board for upcoming courses. Enquiries: Beryl Semple 0428 411 171, Louise Lodge 0427 700 613.

### MUNGLINUP

**GOLF** Ladies Golf: Wednesday by 8.45am Men's Golf: Saturdays by 11.30am.

### RAVENSTHORPE

**GOLF** April- October Ladies Golf: Wednesday names in by 9am Men's Golf: Saturday names in by 12pm

**GYM** membership available. Contact Ravensthorpe Shire 9839 0000.

**HAND GUN CLUB** Every second Sunday 9.30am Contact Ray Edwards 0427 381 162.

**HOSPITAL AUXILIARY** meets on second Tuesday of every second month at the red room. Starting Feb 14, 2017. Contact Judy Harp 9838 1565.

**MUSEUM/INFORMATION CENTRE** Open 10 am to 4 pm Monday to Saturday or by appointment 9838 1044 or 9838 1583.

**OP SHOP** trading 10am to 1pm Tuesdays to Saturdays.

**PROGRESS ASSOCIATION MEETINGS** held on third Tuesday of each month, 7pm, Red Room, Ravensthorpe. New members always welcome.

**RAVENSTHORPE BASKETBALL** For more information contact Ethan Clarke 0452 261 717.

**RAVENSTHORPE PLAYGROUP** Thursday 9-11.30am at the Ravensthorpe Youth Club building. Please bring a piece of fruit to share.

**RAVENSTHORPE REGIONAL ARTS COUNCIL RRAC** Dance Program (During School Term2, 2019) Weekly Dance Classes for Adults and Children. Hopetoun, Ravensthorpe & Lake King. Contact Kirsty rraccordinator@westnet.com.au or 0438 945 405. Facebook: RRAC Dance

**STATE EMERGENCY SERVICE** meets at 7.30 pm on second and fourth Wednesday of month at SES HQ, Morgan St.

**STAY ON YOUR FEET EXERCISES** exercises at Senior Citizens Centre, Fridays 10-11am.

**COMMUNITY RESOURCE CENTRE & LIBRARY** Open all day from 9am-5pm Monday to Friday.

**TAI CHI** Senior Citizens Center each Wednesday 9.30 am - 10.30am \$2. Contacts Jessie Fairhead 0429 389 023 or Liz Aberline 0427 839 988.

**YOGA CLASSES** Ravensthorpe District High School Hall. Monday, Wednesday, Friday, Saturday, Sunday from 6:45 PM to 7:45 PM. Check Facebook: 'Philachyan Life Skills' for schedule updates

If you know of any changes that are required to **REGULAR EVENTS**, please ensure you notify us at [contributions@cospirit.net](mailto:contributions@cospirit.net).

## CHURCH NOTICES

### ANGLICAN CHURCH

St Andrews Ravensthorpe service on the first and third Sunday of the month at 11am.  
Peter the Fisherman, Hopetoun service every Sunday at 9am followed by morning tea.  
Enquiries Kevin and Lyn Hosking, 9838 3130.

### CATHOLIC CHURCH

Saturday before 1st Sun of the Month Hopetoun 6pm  
Saturday before 3rd Sun of the month Hopetoun 6pm  
1st Sunday, Ravensthorpe, 8.30am  
3rd Sunday, Ravensthorpe, 8.30 am  
For enquiries please call Fr Joseph Sousa 9865 1248.

### RAVENSTHORPE CHRISTIAN FELLOWSHIP

Our services for 2019 will be on the second and fourth Sunday's.  
Second Sunday at 10 am and fourth Sunday at 10am OR 2pm.  
For enquiries contact Rob Lloyd 9838 1153 or 0427 381 153 or [Ron Ross 9838 1188](tel:98381188) or [0429 381 188](tel:0429381188)



# BUSINESS AND SERVICES DIRECTORY

## ALBANY

**Albany Fitness** ..... 9842 1200 • sales@albanyfitness.com.au  
**Albany Smash Repairs** ..... 9842 2838 • paularmstrong@smashrepairer.com  
 www.smashrepairs.com.au  
**Smith's Aluminium** ..... 9842 2617 • smithali@westnet.com.au

## DOCTOR'S SURGERY

**Hopetoun Ravensthorpe Medical**  
 Hopetoun—Mon, Wed, Fri 9am-5pm ..... 9838 3854 • F 9838 3729  
 Ravensthorpe—Tues, Thurs 9am-5pm ..... 9838 1600  
**Community Transport Vehicle Co-ordinator Chelle** ..... 0439 335 147

## ESPERANCE

**ARC Accounting** ..... 9071 5833 • admin@arcaccounting.com.au  
**AS Smart Remedial & Relaxation Massage** Peter Dempster ..... 0428 422 368  
 bam.dempster@bigpond.com • Saturday morning appointments available  
**Compass Conveyancing (WA)** ..... 9071 1655 • meredith@espconvey.com.au  
**Esperance Bay Dental** ..... 9071 5888 • www.esperancebaydental.com.au  
**EMG Ford** ..... 9071 0100 • accounts@emgesperance.com.au  
**Esperance Insurance Broker** Rod Parsons ..... 9071 3600 • M 0427 712 902  
 rodp@espib.com.au • www.espib.com.au  
**Esperance Toyota** ..... 9071 0100 • accounts@emgesperance.com.au  
**Powerplant Motorcycles** ..... 9071 1780 • tim@powerplantmc.com.au  
 www.powerplantmotorcycles.com.au  
**Sportspower - Greg Bower** ..... 9071 2365 • M 0402 124 681  
 esperance@sportspower.com.au

## HOPETOUN

**4 Rivers Plumbing & Gas** ..... 0407 358 983 • petersmith@4rivers.com.au  
**Belli Mini Earthworks** ..... Ph 9838 3898 • M 0427 027 003 • diannegreg@wn.com.au  
**Carpet Cleaning** ..... hopetoungapservices@icloud.com  
**Hallams Cartage Contractors** ..... M 0429 049 114 • hallamscartage1@bigpond.com  
**Hopetoun Beachfront Chemist** ..... 9838 3333 • hopetouchemist@gmail.com  
**Hopetoun Community Resource Centre** ..... 9838 3062 • hopetel@comswest.net.au  
**Hopetoun Earthworks & Concrete Supply** ..... 9838 3336 • 0427 383 336  
**Hopetoun Garden & Property Services** ..... 0400 716 885  
 hopetoungapservices@icloud.com  
**Hopetoun General Store** ..... 9838 3052 • russ.asty@bigpond.com  
**Hopetoun IGA** ..... 9838 3919 • russ.asty@bigpond.com  
**Hopetoun Mobile Crane Steve** ..... 0427 282 116 • steveglens@gamil.com  
**Hopetoun Slashing** ..... 0429 049 114  
**Hopetoun Transport and Haulage** ..... 0429 049 114  
**Hopetoun Tyre Service** ..... 9838 3156 • M 0407 313 062 • hopetire@bigpond.com  
**Lansell Legal—PO Box 4189 Mosman Park 6912** ..... 0438 738 965  
 pvlans@bigpond.com  
**Little Barrens Early Learning Centre** ..... 9838 3278 • littlebarrenselc@bigpond.com  
**Pest Control Local & Termites** ..... 0429 801 295 • casperprince@bigpond.com  
**Port Hotel** ..... 9838 3053 • F 9838 3036 • Kitchen 9838 3375  
 www.porthotel.com.au  
**Ray White Rural South Coast WA** ..... 9838 3100 • F 9838 3250 • M 0429 299 797  
 raywhiteruralsouthcoastwa.com.au  
**Wavecrest Bar & Bistro** ..... 9838 3400 • venuemanager@wavecrest.net.au  
**Wavecrest Village** ..... 9838 3888 • village@wavecrest.net.au

## JERRAMUNGUP

**Jerramungup Electrical Service** ..... M 0428 351 171 • jmpelectrical@bigpond.com

## LAKE KING

**Lake King Agencies & Roadhouse** ..... 9874 4094  
**Lake King Tavern, Motel & Caravan Park** ..... 9874 4048  
 lakekingtavern@gmail.com • www.lakekingtavernmotel.com.au  
**Landmark Lake King—Ross** ..... 9874 4004 • F 9874 4005 • M 0428 105 059

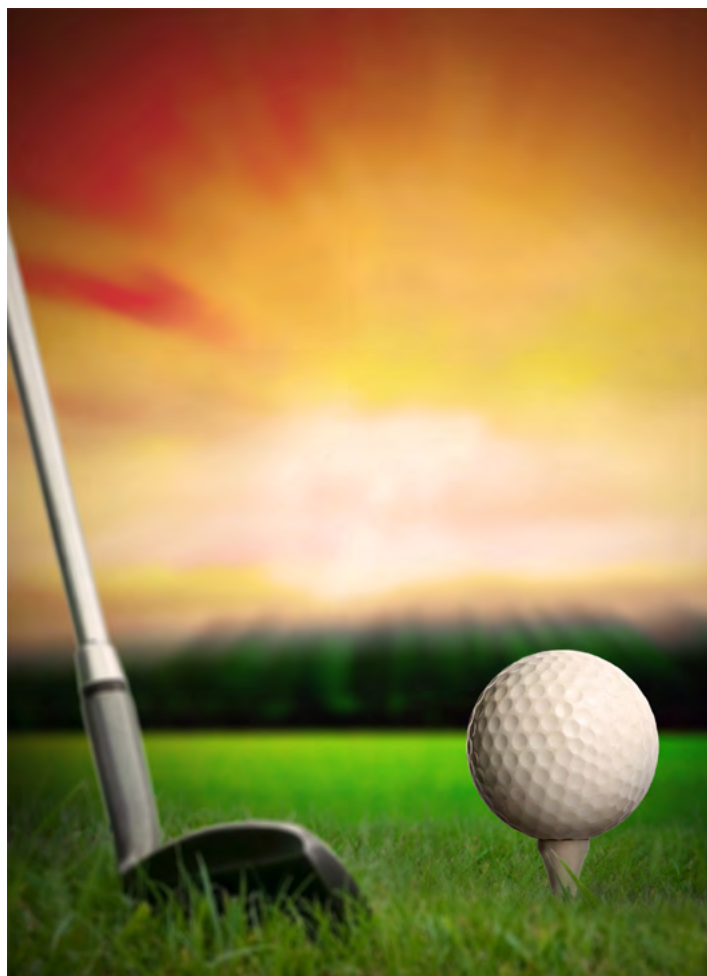
## RAVENSTHORPE

**4 Rivers Plumbing & Gas** ..... 0407 358 983 • petersmith@4rivers.com.au  
**5K Livestock and Bulk Pty Ltd** Ben Sutherland ..... 0428 271 818  
**Dingo's Dog Kennels & Riley's Cattery** ..... 9838 1092 • M 0427 381 092  
**Eremia Camel Treks & Camel Museum** ..... 9838 1092 • M 0427 381 092  
 animamundi@westnet.com.au  
**FE Daw & Sons** ..... 9838 1008 • fedaw@wn.com.au  
**Freight Lines General - Murray** ..... 9838 1343 • F 9838 1382 • M 0427 381 211  
**Green Haven Tourist Park** ..... 9838 1050 • M 0439 369 838  
**Hannaford Seed Grading** ..... M 0427 268 136 • hannaford.ravensthorpe@gmail.com  
**Joryn Haulage - Cameron & Dana Fairhead** ..... 0429 389 013 • 0428 389 013  
 jorynhaulage@bigpond.com  
**Madden Rural** ..... Jordan 0428 542 428 • Mick 0429 380 081 • Steve 0428 380 081  
 admin@maddenrural.com  
**Meridian Agencies, Toys, Gifts and Post Office** ..... 9838 1276  
**Palace Motor Hotel** ..... 9838 1005 • admin@ravyhotel.com.au  
**R & L Construction** ..... 9838 3888 • M 0428 381 232  
**R and R Heavy Diesel Services** ..... M 0438 164 616 • randrhds@bigpond.com  
**Ravensthorpe Agencies - B&R Biddulph** ..... 9838 1236 • ravyag@westnet.com.au  
**Ravensthorpe Agricultural Initiative Network** ..... 9838 1018 • M 0417 174 299  
**Ravensthorpe Bulk Haulage** ..... Ph/fax 9838 1497  
 rbh@westnet.com.au • Wayne 0427 381 497 • Debbie 0428 381 497  
**Ravensthorpe Cellars** ..... 9838 1808 • ravycellars@westnet.com.au  
**Ravensthorpe Community Resource Centre** ..... 9838 1340  
 ravensthorpe@crc.net.au  
**Ravensthorpe Mechanical Service** ..... 9838 1146 • M 0428 381 146  
 ravmechservice@bigpond.com  
**Ravensthorpe Motel** ..... 9838 1053 • F 9838 1366  
**Ravensthorpe Pharmacy** ..... 9838 1020 • ravensthorpepharmacy@gmail.com  
**South Coastal Agencies, Landmark** ..... 9838 1081  
 kyle.forsyth@landmark.com.au • M 0417 912 318  
 tom.major@landmark.com.au • M 0403 782 887  
**Yummylicious Candy Shack** 89 Morgans St, Ravensthorpe ..... Ph: 08 9838 1647  
 darrincharg@gmail.com

## EMERGENCY NUMBERS

**EMERGENCY TO REACH ALL SERVICES** ..... 000  
 Ambulance NON-Emergency ..... 13 12 33  
 Hopetoun Volunteer Marine & Rescue ..... 9838 3207  
 Lake Grace Hospital ..... 9890 2222  
 Police - Hopetoun ..... 9838 3724  
 Police - Jerramungup ..... 9835 0222  
 Police - Lake Grace ..... 9865 1007  
 Police - Ravensthorpe ..... 9838 1004  
 Ravensthorpe Hospital ..... 9838 2211  
 State Emergency Service ..... 1300 130 039

All phone numbers, email and web addresses on this page are hyperlinked. Just click on it on your smart device.



# Guthrie wins the day at Ladies Open

## ■ HOPETOUN GOLF CLUB NEWS

On an absolutely beautiful day 26 ladies turned up to our Hopetoun Ladies Open on July 17th.

Winner of the day was Tove Guthrie on a count back from Penny with 38 points.

Runner-up was Penny Daniels with 38 points.

Gross Winner was Serena Parr 17 points.

Division 1 winner was Carmel Scott from Pink Lake with the runner-up being Jackie Martin from Esperance.

Division 2 winner was Julie Withers from Pink Lake with the runner-up being Jenny Davidson from Hopetoun.

Veteran winner was Irene Morocz from Pink Lake.

Our next Ladies day is the SELGA singles championships on September 4th, so lets hope we have the same weather (sorry to the farmers though).

Nine Hopetoun golf members travelled to Munglinup on Saturday July 20th for the inaugural Ravy-Mungy-Hopy challenge.

Hopetoun won!

Five members also travelled to Scaddan on the Sunday for the Ladies and Men's Open Day.

It was great to see about 50 golfers at the 19th hole at Scaddan.

Gotta love your golf

Saturday 27th was Christmas in July and Canada day, sponsored by Tove Guthrie and the club.

—Serena Parr

**ALBANY**  
CITY TOWING SERVICES

Paul Armstrong  
Proprietor

*Paul Armstrong*  
*Panel Beaters*

**24 Hr Towing**

Mobile 0418 936 010  
Tel: 9842 2838  
14 Prior Street Albany WA 6330  
paularmstrong@smashrepairer.com



**Albany  
Smash  
Repairs**

All Makes & Models  
All Work Guaranteed  
**0418 936 010**  
**9842 2838**



paularmstrong@smashrepairer.com  
www.smashrepairer.com