

Community Spirit

Distributed fortnightly in Fitzgerald, Hopetoun, Jerdacuttup, Lake King, Lake Varley, Munglinup, Newdegate and Ravensthorpe

A Night of Music in Spring



■ The Qualup Choir (back row); front row—Margaret Dylan Jones (pianist), Toni Arnt (soprano), Jean Bourgault (pianist), Mary Robertson (choir accompanist), Henry Bourgault (bass), Coralie Thomas (compere), Chenda Goldfinch (conductor).

"A wonderful show - it exceeded our expectations."

"Something different and a lot of fun."

"Great to have visiting musicians to complement the performance of our Qualup Choir."

These were just some of the responses from those who attended "A Night of Music in Spring", featuring The Qualup Choir and visiting artists, and performed at Hopetoun Town Hall.

The concert was held in aid of the Royal Flying Doctor Service with entry by donation to RFDS. A sum of \$1,091 was

sent to Perth and this is to be matched \$1 for \$1 by Rio Tinto. A wonderful effort by everyone.

MC Coralie Daw welcomed an enthusiastic crowd before Qualup Choir sang the Welcome song, 'Kaya', to begin the evening's entertainment.

Toni Arndt, soloist in the Hills Choir, sang from a wide repertoire including operatic arias, popular musicals and an original composition by her late husband, Frank Arndt. For many the highlight was a bracket of two songs from 'Oliver', in costume, and moving renditions of the Edith Piaf songs 'La Vie en Rose' and 'Rien de Rien'.

■ Continued page 3

RAY WHITE RURAL (SOUTH COAST WA)

25 Veal Street Hopetoun
raywhiteruralsouthcoastwa.com.au

Office/PM: 08 9838 3100

• Residential Sales 0428 711 576 (Sue)

Ray White®

• Rural Sales 0429 299 797 (Sias)

Ray White®

RAVENSTHORPE



123 MARTIN STREET RAVENSTHORPE \$134,000

Why rent for \$240/week when you can own for \$135.00/week with this newly renovated, restumped home with bush views, a massive shed, gyprock interior, and new colour bond exterior. Also some furniture and appliances are included in the list price.

7 minute drive to Galaxy Lithium Mine.

27 minute drive to FQM Nickel Mine and

22 minute drive to ACH Gold Mine.

[Check it out here](#)

RAVENSTHORPE



55 DUNN STREET RAVENSTHORPE \$199,000

This well maintained home sits on a large quarter acre block just a short walk from town. Modern transportable with 3 bedrooms, each with a ceiling fan and built in wardrobes plus a study/office or small nursery. The lounge room has a reverse cycle air con to ensure you stay comfy year round. This opens onto the spacious kitchen/dining area. Kitchen is modern with good storage, gas hotplates and electric stove, dishwasher recess and good size pantry. There is a main bathroom with bath/ shower, two toilets plus a second shower in the laundry - great to rinse off after a hard day's work, a gardening session or motorbike ride.

[Check it out here](#)

HOPETOUN



43 MAITLAND STREET, HOPETOUN \$299,000

Neatly presented property, modern brick and colour-bond unit located on a 547sqm block on the corner of Maitland St and Una Way. There are three bedrooms and two bathrooms. It is well appointed with tasteful, modern fixtures and fittings, easy care laminate flooring and air conditioning wall units. The yard is easy care with a fenced area, reticulation and small garden shed, plus an undercover patio and a carport. Short walk to the beach, school or the shops. Currently rented, view by appointment only.

[Check it out here](#)

HOPETOUN



27 RAGLAN STREET, HOPETOUN \$360,000

This lovely family home has great views and is full of country charm. You will love the parquetry floors and open plan living with double doors leading to a fabulous outdoor area with cafe blind enclosed alfresco & landscaped native gardens. There are 3 good bedrooms, one opening out to a balcony with ocean views, 2 bathrooms one with a bath. Other features include ceiling fans, a good size kitchen, gas oven, separate laundry, double shed with concrete floor and power connected. It's a home your family will treasure and make their own. Come and inspect today.

[Check it out here](#)

HOPETOUN



214 JONES ROAD, HOPETOUN \$499,000

This amazing 3 bedroom stone house consists of beautiful leadlight doors, windows and charming glass work inlaid into the stone walls. Pressed tin work in some areas. Approx 570 meters plus river frontage. This homestead has 2 very large enclosed living areas, one facing Mt Barren and the other facing the Steere River. Additionally, there is a theatre room featuring an open fireplace. The house has an enclosed yard making it ideal for children and pets. Near new roof, two water tanks, 2 Dams, good fencing, 3 bay garage, workshop shed plus 3 smaller garden sheds.

[Check it out here](#)

HOPETOUN



29 RAGLAN STREET, HOPETOUN OFFERS OVER \$330,000

Rammed earth, stone & timber, two storey 3 x 2 home overlooking views of the Southern Coastline and the spectacular Barren Ranges. Modern and open with local stone retaining walls, rammed earth lower level construction with colorbond/hardiplank 2nd storey. Internally there is a combination of textures & materials - pine slats, slate and lino plus jarrah floorboards, feature staircase. Downstairs - modern kitchen, marble breakfast bar, large walk in pantry and gas oven/hotplates. Large living area with cathedral ceilings. Two good size bedrooms plus a large bathroom, separate laundry. Upstairs feature spa in the large living area which opens onto a good size balcony running the length of the house. A third bedroom with BIR and 2nd WC completes the second storey. Gardens are native & easy care. Good sized single lock up garage.

[Check it out here](#)

RAY WHITE RURAL (SOUTH COAST WA)

25 Veal Street Hopetoun

raywhiteruralsouthcoastwa.com.au

Ph: 08 9838 3100 • Residential Sales 0428 711 576 • Rural Sales 0429 299 797

A Night of Music in Spring

■ From page 1

Jean Bourgault, well-known in the Perth Hills area for her inspirational contribution over many years to music and performing arts, accompanied some of Toni's solos. She also accompanied her husband, Henry Bourgault, in a Mozart piece and in an amusing version of 'The Song of the Flea' (for Merle).

Margaret Dylan Jones, composer, pianist, teacher and writer performed original piano solos, 'Rainbows over Hovea' inspired by the bush near her childhood home, and 'Puck at Parkerville', a playful piece written for a performance of 'Midsummer Night's Dream'.

Margaret also played a lively Scott Joplin work and a lesser known Beethoven sonata, and accompanied Toni in 'Beside the Foyle', new words and music to the traditional 'Londonderry Air'.

During the evening The Qualup Choir presented three sets accompanied by Margaret Dylan Jones, in person.

In a change from usual practice and in the absence of their long-standing pianist, the choir had rehearsed over preceding months to piano accompaniment generously recorded and supplied by Margaret from Perth. An added degree of difficulty, one would think.

As always, the choir delighted the audience with the quality of their performance and the obvious joy they derive from their singing.

Congratulations to singers and their hard-working conductor, Chenda Goldfinch, on a magnificent show.

■ Continued page 5



■ Toni Arnt, soprano.



■ A tribute to Mary Robertson, long time accompanist for the Qualup Choir - flowers by Hayley Wisewold.

This week's
SPECIALS



Australian
**IGA WHOLE
OR HALF
LEG HAM**
\$6 kg
Serving Suggestion





Kensington Pride Mangoes	\$3.00ea
Hass Avocados	\$1.80ea
Green Kiwifruit	0.65¢ ea
Zucchini	\$1.00ea
Boneless Skinless Chicken Breast	\$7.00kg
Whole Pork Scotch Fillet	\$11.00kg
Economy Porterhouse Steak	\$16.00kg
Golden Circle Fruit Drink 1L select varieties	\$1.07ea
Golden Circle Wedged Beetroot	\$1.20ea
Dynamo Laundry Liquid 1.8-2L select varieties	\$8.75ea
Dettol Foam Hand Wash Refill 900ml select varieties	\$4.25ea

On sale Wednesday November 6th to Tuesday November 12th 2019.



30 Veal Street Hopetoun • 9838 3919

Contacts

Ambulance:

Emergency 000
Non-Emergency 13 12 13

Hospitals:

Ravensthorpe 9838 2211
Esperance 9071 0888
Albany 9892 2222

Doctors Surgery:

Hopetoun 9838 3854
Ravensthorpe 9838 1600

Dentist:

Ravensthorpe 9838 1322

Esperance Hospital

Public Dental Clinic..... 9071 0889

Community Nurse/Child Health:

Ravensthorpe 9838 2211

Extended Care Nurse:

Hopetoun 9838 3323

Home and Community Care

Office 9838 3144
Mobile 0429 889 675

Community Vehicle Transport

Coordinator 0439 335 147

Hospital Auxiliary:

Second Tuesday of the month 1.30pm in the Red Room
Contact Judy Harp

Allied Health:

Services such as Physio, Dietician, Occupational Therapy and Speech Pathology are available. Contact Ravensthorpe or Esperance Hospital to find out more about these services.

Mental Health:

There is a Mental Health service available currently. Please contact Ravensthorpe Hospital to find out more about this service.

Shire of Ravensthorpe Councillor Contact Details

Shire Council Offices..... 9839 0000

Keith Dunlop—Shire President.....

Phone: 9838 330; Mobile: 0428 383 302
Email: Keith.dunlop@ravensthorpe.wa.gov.au

Jules Belli—Deputy Shire President Mobile: 0427 440 582

Email: Jules.belli@ravensthorpe.wa.gov.au

Ian Goldfinch..... Phone: 9838 5049; Mobile: 0428 385 049

Email: ian.goldfinch@ravensthorpe.wa.gov.au

Tom Major..... Mobile: 0403 782 887

Email: Tom.major@ravensthorpe.wa.gov.au

Mark Mudie..... 0428 356 064

Email: mark.mudie@ravensthorpe.wa.gov.au

Ken Norman 0428 396 055

Email: ken.norman@ravensthorpe.wa.gov.au

Graham Richardson..... Phone: 9838 3880; Mobile: 0474 492 810

Email: Graham.richardson@ravensthorpe.wa.gov.au

Word of the Day

fraught adjective | FRAWT

Definition:

1 : full of or accompanied by something specified – used with with
2 : causing or characterized by emotional distress or tension : uneasy

Did You Know?

"The dromond was so hevy fraught / That unethe myght it saylen aught." That verse, from the 14th-century poem Richard Coer de Lion, says that a large ship (a dromond) was so heavily loaded that it could barely sail: originally, something that was "fraught" was laden with freight. Fraught came to Middle English from the Middle Dutch or Middle Low German noun vracht, which meant "load" and which is also the source of freight. For centuries, fraught continued to be used of loaded ships, but its use was eventually broadened for situations that are heavy with tension or some other weighty characteristic.



ALL ENQUIRIES:

contributions@cospirit.net
Kylie Thomas, Co-ordinator, 0408 840 447
Or Attn: Contributions, PO Box 135,
Ravensthorpe 6346.

Or Hopetoun and Ravensthorpe Community Resource Centres will accept written articles. Include name, address and phone details in all correspondence.

GENERAL ADVERTISING AND CLASSIFIEDS

Content to be sent in Word, PDF or JPEG formats. Classified proofs on request only.

ARTICLES AND PHOTOS

Articles to be sent in Word format.
Photos to be sent in JPEG format.
Photos minimum size 500mb.
Maximum of two photos per email.
Photos of children require parental permission.

ACCOUNTS AND SUBSCRIPTIONS

Email financeadmin@cospirit.net
Phone enquiries Sandi Hunter,
0417 950 615.

MANAGEMENT COMMITTEE

Email secretary@cospirit.net or
PO Box 135, Ravensthorpe 6346
GRIEVANCES—contact secretary by email
secretary@cospirit.net

NEXT ISSUE DEADLINE:

5pm, Thursday November 14, 2019

The Community Spirit is YOUR paper...

WE WOULD LOVE TO KNOW WHAT YOU THINK AND WAYS TO IMPROVE THE PRESENTATION OF YOUR COMMUNITY SPIRIT.

We would also like to know what you would like to see in your paper.
Please forward your contributions, thoughts & ideas to contributions@cospirit.net



■ The Qualup Choir.

A Night of Music in Spring

■ From page 3

On behalf of the choir, Chenda expressed gratitude to the visiting musicians for their generous participation and to Coralie Daw and Ravensthorpe Regional Arts Council. Chenda presented a gift to Mary Robertson, in whose honour the concert was held - "our longstanding pianist who has accompanied

us with skill and utmost patience for more years than anyone can remember".

"A Night of Music in Spring" was an evening of thrilling entertainment with something for everyone. We are fortunate to have the opportunity in Hopetoun to enjoy the gifts of these talented people.

—K Hanrahan

Raffle Winners

Congratulations to the winners of the Canberra Camp Raffle prize winners.

The Prize winners were:

1st Prize - Marg McQuade

2nd Prize - Kristin Lanham

3rd Prize - David Balasubramanian

Thank you to Ray White Rural South Coast WA and Hopetoun Community Resource Centre for supporting the raffle.

—J Edwards



■ Margaret Dylan Jones, pianist, and flowers by Sue Leighton.

Santa Claus is coming to town!

And he's bringing the biggest issue of the Community Spirit for the year!



Make sure you get noticed over the busy Christmas period with the added bonus of being seen over the summer break by all the visitors to our towns!

Book your space now for Issue 23 now!

**Call Kylie now on 0408 840 447
for further information**



PUBLIC NOTICE

Contamination of Collected Recyclables

Dear Resident,

The Shire of Ravensthorpe has received notification that during the collection of recyclable materials a large number of recycle bins have been found to contain contaminant items.

The main concern is the number of occurrences that food waste is being found amongst the collected recyclable materials.

Additionally we have been asked to remind residents that items are to be placed loose in the yellow topped recycling bins. Any items placed in plastic bags will not be accepted, will be classified as contaminated material and will be diverted to landfill.

Please find attached a flyer outlining a complete list of acceptable recyclable materials.

The Shire of Ravensthorpe appreciates your assistance in ensuring that the kerbside recycling collection can continue as a viable service for our Community.

Yours Sincerely

Gavin Pollock

Chief Executive Officer

31 October 2019



What can I recycle?



Newspaper, paper & magazines



Milk & juice cartons (no foil lined cartons)



Steel & aluminium cans



Glass bottles & jars



Plastic bottles & containers (remove lid)



Cardboard boxes (please flatten)



No polystyrene, meat trays, cups & breads



No green waste or food waste



No gas bottles, flares, batteries or aerosols



No plastic bags or soft plastics



No textiles/clothing



No nappies



Acceptable Recyclables List

Only the following items should be placed into the yellow-top recycling bin:

Aluminium

- All aluminium cans including:
 - Beer cans
 - Soft drink cans
 - Coffee/Milo tins

Steel

- All steel cans/tins including:
 - Food tins (rinsed)
 - Pet food tins (rinsed)
 - Beer bottle tops
 - Car lids

Cardboard

- Cardboard boxes (flattened)
- Beer cartons (flattened)
- Cereal boxes (remove bags)
- Egg cartons
- Greasing cards
- Toilet Paper/Paper towel rolls (roll only)
- Washing Powder boxes (empty)

Paper

- Tenispapers
- Paper (not shredded)
- Paper bags
- Computer paper (not shredded)
- Envelopes
- Fruit juice cartons (not silver lined)
- Milk cartons (not silver lined)
- Glossy magazines/brochures
- Junk mail
- Wrapping paper

Plastic

- Milk bottles
- Soft drink bottles
- Water bottles
- Ice cream containers
- Margarine tubs
- Yoghurt containers
- Plastic containers from kitchen (rinsed and empty) ie sauce bottles
- Plastic containers from laundry (rinsed and empty) ie detergent bottles
- Plastic containers from bathroom (rinsed and empty) ie shampoo bottles
- Take-away food containers (rinsed, not polystyrene)

Glass

- Glass bottles and jars including:
 - Beer bottles
 - Coffee jars
 - Sauce bottles (rinsed)
 - Spirit bottles
 - Wine bottles





13 13 39



13 13 39

A future Community Garden in Hopetoun?

I moved back to town in early June and was needing something that would help get myself back out into the community. And with that I did.

I approached Hopetoun Progress Association to see what it would take to get a community garden up and going. Being very new to any venture like this I was certainly interested to get involved within the community in something I love to do, and that is gardening. Hopetoun Progress jumped at the chance to support this project.

So, over the last few weeks you would have seen advertisements for a gathering to discuss a potential community garden. Well on the October 12th we held our first meeting at Fiona and Ray's, who were so kind to let their place be our starting point—much gratitude to you both. Nervous as I was, I knew that I was in good company with heaps of encouragement.

The morning was filled with glorious rain and as a backup for any kids that may come, we had a bus with some activities for the kids parked in the driveway. Slowly those who were coming trickled in and we got things underway. Many topics were discussed and some great ideas as well.

We covered possible locations, infrastructure (i.e. tool shed, maybe a seed container, meeting area, possibility of using the old ticket office with historical value, power in the form of solar and harvesting water), long term upkeep, potential vandalism, youth involvement, sustainability and more.

It was wonderful hearing the thoughts and concerns of those present, so I can only imagine what future meetings will be like. Minutes from this meeting are available to the public and can be emailed out to those who are interested.

We decided that a survey of the community was needed to find out what people's interests were and possible locations. This should have come into your post boxes, so if you haven't already please fill in the survey if you're interested in getting a garden started. This is due in by October 31st so be quick to have your say. There will be a drop box in the community centre to put your completed survey into and then we can go through and bring our results to the next meeting.

Having a community garden is not just about gardening and street scape, it's about getting to know one another and learning what others have to teach. There is so much talent within the community that I believe that so much can be accomplished with a project like this and having a safe space



NEXT MEETING

We are holding another meeting to form an official group and discuss the outcomes of the survey and any other information that we wish to discuss.

November 9th at 2pm at 28 Dawn Street Hopetoun.

for all to come.

It will be great to create a sustainable practice area that can help people within the community learn great practices they can use at home.

Youth involvement is hugely important in encouraging healthy eating in young people as well as help reduce any vandalism to the garden as they will reap the rewards of what they grow.

With that an idea was also put across for also growing bushtucker—what a great idea! Such a great way to get to know what you can or cannot eat while in the native bushland.

We will be holding our next gathering on November 9th, 2019. There we will be forming a committee and discuss further steps we will need to take to get this off the ground.

If anyone has any questions or ideas, don't hesitate to email me at wooroonagardens@live.com or contact Hopetoun Progress Office 9838 3363.

—Genna van Hinseberg



Choose a settlement agent who
stands out from the crowd
Support your local business &
let our experience work for you!



Call Meredith on 9071 1655
or email: meredith@compasswa.com.au

Located at
101 Dempster Street Esperance

SATURDAY 14 DECEMBER 2019 5.30 'TIL LATE

RAVENSTHORPE

• COMMUNITY •

CHRISTMAS TREE!

JUBILEE PARK
SANTA ARRIVES 6.30PM



LIVE
MUSIC



BURGERS &
SAUSAGE
SIZZLE



FACE
PAINTING

REGISTER AT [HTTPS://WWW.TRYBOOKING.COM/BGCZC](https://www.trybooking.com/BGCZC)

PROUDLY SUPPORTED BY:



Have you noticed ??.....

At last! Ravensthorpe's amenities have received another welcome addition—this time in the form of a shelter over the picnic table down by the old railway station and big roundabout.

The long term plan for this shelter, besides offering shade and... well... shelter to picnickers is to turn it into a look-alike old railway station.

This would add further interest to the site which already hosts old, railway related machinery.

This project was jointly undertaken by Ravensthorpe Progress Association and the Historical Society, a fruitful partnership.

Funding was sourced from both organisations, the Ravensthorpe



Hopetoun Future Fund and LotteryWest. We are grateful to the funding bodies.

Many thanks also to our gifted carpenter, Colin Hughes, for a beautiful

job. Look out for further development in that area!

—MN

*It's that time of year again ...
Earwig Season!*

Dermaptera

In a late-night horror movie a creature crawls into the ear of an unsuspecting sleeper and lays her eggs inside his brain.

The nymphs upon emerging begin to feast on grey matter until the constant painful chomping finally sends the man insane.

But scientists claim she builds a cosy nest in soil among leaf litter guards her eggs and cleans them, feeds her babies lovingly as they grow.

They say these harmless insects snuggle in moist crevices and venture forth at night to munch upon decaying plants ... but even so ...

Little earwigs, when you squeeze into my house and hurry across the floor with prongy pincers raised above your fierce prognathous head

Or gather in the laundry to chew the bodies of your sisters
I swat you with my slipper as a warning - stay out of my bed!

—K Hanrahan

HOUSES/UNITS FOR LEASE

In these towns:-

- Katanning
- Gnowangerup
- Lake Grace
- Newdegate
- Lake King
- Varley
- Ravensthorpe
- Jerramungup
- Bremer Bay

ENQUIRE TODAY

(08) 9845 9697 or admin@advancehousing.com.au



Santa Claus is coming to town!

And he's bringing the biggest issue of the Community Spirit for the year!



Make sure you get noticed over the busy Christmas period with the added bonus of being seen over the summer break by all the visitors to our towns!

Book your space now for Issue 23 now!

**Call Kylie now on 0408 840 447
for further information**

Custodians of a rich and varied history

■ Phillips River Heritage

Who would have thought almost 50 years ago, when the Ravensthorpe Museum was founded, that it would grow to what it is today! Like Topsy, it still keeps on growing.

Local donors, of which there are too many to count, signify the value and importance of the heritage of Phillips River Goldfield/Ravensthorpe Shire.

Whether relatives of bygone days, or living in the district, interstate and even overseas, they bring along precious objects both small and big that enhance the Collection.

The Phillips River/Ravensthorpe Shire has a rich history and to prove it, come along to the museum and see what is on display.

There are documentary histories of Aboriginal habitation, early white pastoralists, ships and port, gold and copper mining settlements, law and order, agriculture, towns, rabbit proof fence, buildings, railway, businesses, commerce, schools and churches, sport, health, recreation, world wars, salmon fishing and more in the archives.

Objects representing, all of the above, are on display and fill the space of several town blocks.

Without the generosity of donors the museum could not exhibit such a varied, extensive, valuable and interesting collection.

Recently two tractors, one a 1950s Fordson Super Major with Proline fence digger and the other a 1960s Chamberlain C6100 with Gason cab, were gratefully received and accessioned to the Collection.

The life of the Phillips River Masonic Lodge, after 102 years serving the district, came to a close in March this year. This will not be forgotten as several pieces of memorabilia have been passed on to the museum. Some of these are shown in the accompanying photograph.

The Ravensthorpe Historical Society is the management committee of the Ravensthorpe Museum which houses and nurtures this valuable asset on behalf of the local community. It gives great pleasure to frequent visitors including groups of school children.

The Ravensthorpe Historical Society wishes acknowledge with a big thank you to all the generous donors who have given them the privilege to be the custodians of the Ravensthorpe Museum Collection.

—Ravensthorpe Historical Society



■ Mason's Chair.

Keevil's Furniture
homemakers

**YOUR LOCALLY OWNED AND OPERATED
FURNITURE AND BEDDING STORE**

Located near the Boulevard Shopping Centre, Esperance

For all your Furniture, Bedding, Giftware
and Homeware requirements.

www.homemakersfurniture.com.au
Phone 08 9071 2585
keevilsfurniture@bigpond.com





THE SHIRE OF RAVENSTHORPE
WOULD LIKE TO INVITE ALL
SENIORS WITHIN OUR COMMUNITY
TO ATTEND THE ANNUAL

SENIORS CHRISTMAS LUNCHEON

WEDNESDAY 11 DECEMBER 2019
12 NOON

HOPETOUN COMMUNITY CENTRE

RSVP 2 DECEMBER 2019

CONTACT - PORTIA CHAMBERS

PHONE - 9839 0000

EMAIL - EA2@RAVENSTHORPE.WA.GOV.AU



There will be a bus available for all attending
the luncheon from Ravensthorpe.
If you would like to reserve a seat on the bus
please let us know when you RSVP.

Conquering the digital divide

■ Ravensthorpe CRC

Ravensthorpe CRC is conquering the digital divide by upskilling our staff and community members to provide digital mentorship through the Be Connected program.

On Wednesday October 30th we welcomed Kim Maslin from Esperance Library to deliver Digital Mentor training to staff and one of our Be Connected learners.

The great thing about being a Digital Mentor is you don't have to know everything about technology—the main pre-requisites are a can-do attitude and the willingness to find out about things you don't already know.

Interested in becoming a Digital Mentor or finding out more about using computers or getting online?

At Ravy CRC, we are holding free weekly Be Connected sessions on Wednesdays at 3pm, all skill levels welcome.

Alternatively, contact us on 9838 1340 or ravensthorpe@crc.net.au to book in a free one on one session for computer help or to learn more about the Be Connected program.



■ Kim Maslin teaching our digital mentors.



■ Above: The lovely Kim Maslin from Esperance Library.

CONCRETING MARK CAMERON CONTRACTING

All aspects of concrete
Supply and lay with onsite mixing in the
areas of Hopetoun & Ravensthorpe.

Contact Mark 0429 653 031

Peter Rundle MLA

Member for Roe

Narrogin Office
PO Box 378
Narrogin WA 6312
Ph 08 9881 1225
Fax 08 9881 3082

Esperance Office
107 Dempster St
Esperance WA 6450
Ph 08 9071 6555
Fax 08 9071 6788

Peter.Rundle@mp.wa.gov.au
www.peterrundle.com.au
@PeterRundleMLA
facebook.com/PeterRundleRoe



THE **NATIONALS** for Regional WA

Did you know?

Four Nile crocodiles have been found in Florida. They are the second largest crocodile and are more dangerous than the native crocodiles and alligators in Florida.

Julius Caesar's only son, Caesarion, was the last Pharaoh of Egypt. Even though Cleopatra swears he is Caesar's son, Caesar never officially acknowledged him.

Business makes a big statement

■ Albany CCI

Award-winning Great Southern WA business leaders make a public statement. It is about embracing new economic approaches to complex sustainability issues. Approaches that are inclusive and identify opportunities to build on the region's unique points of difference.

These leaders are telling governments and regional stakeholders they are aligned to their regional strategies. They want to be a clear and influential voice and to be involved as regional strategies evolve.

Great Southern WA Business Leaders - Public Statement—

"Our aspirations are aligned with the intent to secure an economic, social and environmentally sustainable future.

We want to create a new economy for business growth that sustains our unique regional identity. An identity that is felt across the region, the nation and the globe.

We want an economy for nature and people. Nature-based solutions are one of our most important allies as we work in a changing climate.

We want new economic, social and environmentally sustainable supply chain



■ Jordan Wilson - Concept Tech Services, Cheryl James-Wallace - ACCI Working Together, Isabelle Osborne and Jane Kelsbie - Worklink, Danielle Branson - Rule the Books, Mel Homewood - Alkaline Café, Mary Jane Gibbs - Waxiwraps, Rhiannon Moon - BredCo, Amethyst Mettam - The Hub on York, Aaron Attwell - XESIV Digital, Forrest Willox - Alkaline Café, Susan McCabe - Busy Blue Bus and Steve Birkbeck.

models that provide local communities with fair agreements, long term benefits and financial incentives for sustainable practices."

14 businesses put Albany and the Great Southern WA on a national stage last week. Local member Rick Wilson MLA spoke in Parliament about the ACCI Great Southern Business Awards. <https://www.facebook.com/RickWilsonMP/videos/video-great-southern-business-awards/967447240257758/>

"The annual awards are an opportunity to recognise businesses throughout the Great Southern and to share their success with others" said Mr Wilson. As a result, several of the award

winners have secured new opportunities.

Regional Development Minister, Hon. Alannah MacTiernan MLC opened the awards event recognising the value of "the energy, and the enthusiasm and the diversity of businesses" in the Great Southern to the WA economy.

On Tuesday local business leader Steve TJAMU Birkbeck shared his recent experiences in the United Nations with the winners. He highlighted triple bottom line approaches that can assist Governments build stronger and more sustainable economies, communities and environments around the world.

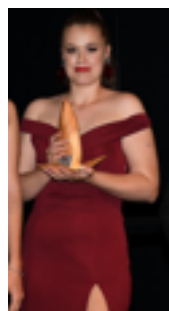
Mr Birkbeck stated "Our region can build a global legacy, based on nature-based solutions where our regional and Indigenous communities enhance our economy, reduce regional community inequities and build our international standing as a world leader."

"The Great Southern is already a region that celebrates its pristine, and stunning environment, it's unique lifestyle and emerging popularity" said Ms Cattalini. "This is a solid identity for our region to build on and these business leaders want to be part of shaping that."

"There's a great vibe here and people outside the region are noticing. Our city is growing.

"Our accommodation and housing are affordable. We are a great place for people to live, work, visit and invest.

"We have a significant creative community. We are embracing new technologies. That is exciting." Says Benita Cattalini, CEO of the Albany Chamber of Commerce and Industry.



■ Above from left to right: Kiya Watt - Aboriginal Artist; Terry White Chemmart Chester Pass; Glen Daniel - Boston Brewery.

COMMUNITY SPIRIT

Changes embraced

■ Chairperson's Report for 2019

As we near the end of 2019 we can look back and reflect on the major change we have made to the Community Spirit Newspaper.

Going digital was the only option we believed we had. In its print form the paper was consistently losing money due to rising production costs and decreasing circulation.

The figures provided by the Ravensthorpe CRC indicate a steady rise in subscribers and those who open and download the online version.

The Ravensthorpe CRC have played a major role in the success of the digital

format of the paper by being the host for the online version and printing the hard copy subscriptions. For their generous assistance during our transition to digital we thank them very much.

Our stand at the Expo in the Park, in March, was well patronised. Many thanks must go to Ann Williams who chose the back issues displayed. Each had a note attached explaining the reason it was chosen.

A lot of comments, exclamations and giggles were heard as people perused them.

On behalf of the committee, I would like to thank our contractors who work hard through out the year to produce our newspaper. They have

all embraced the changes with enthusiasm.

Kylie Thomas—Co-ordinator.

Toni Crane—Designer.

Sandi Hunt—Accounts.

We look forward to another year of challenges and innovations

The committee executives for the coming year are –

Judy Harp—Chairperson

Liz Utting—Vice Chairperson

Jeanette Denham—Secretary

Di Burton—Treasurer

Committee members—Corina Harp, Julia Bell, Madelaine Norman

—Judy Harp

\$160,000 provided to support eight community groups

■ SCNRM

Responding to calls for greater capacity to meet communities' needs local not-for-profit group South Coast NRM has allocated \$160,000 to be shared equally among each of eight of its community partners. The funds can be used by the groups at their discretion in addressing activities that align with the goals of Southern Prospects 2019-2024, the South Coast regional strategy for managing our natural resources.

Major sub-regional groups in the South Coast region are eligible which include the Gillamii Centre, Fitzgerald Biosphere Group, Oyster Harbour Catchment Group, North Stirling's Pallinup Natural Resources, Ravensthorpe Agricultural Initiative Network, Torbay

Catchment Group and the Wilson Inlet Catchment Committee. In recognising the needs of the Esperance area, and the recent cessation of the Esperance Regional Forum, funding for the area will be guided by the South Eastern Reference Group.

In announcing the initiative, Carolyn Daniel, Chair of the South Coast NRM, said that the availability of the funds for the initiative reflects the good corporate governance used by the South Coast NRM in the 2018-2019 financial year, and addresses the difficult economic environment that partner groups operate in.

Ms Daniel said that; 'South Coast NRM has responded to the growing insecurity of funding in the sector by increasing its emphasis on efficiency. In addition to successfully delivering

priority projects in 2018-19 we have tightened our belt to minimise our overheads.' 'Sustainability is a key value for South Coast NRM and it is a credit to our management team that we have reserve funds that can support this initiative for our community partners.'

'In responding to the concerns they've raised the \$160,000 will be available to nominated community groups. The remainder will be used to underwrite the working-capital for a major program, consistent with our good corporate governance and prudent financial management' Ms Daniel said.

Fitzgerald Biosphere Chair, Damon Parker, recognised South Coast NRM's governance and welcomed the initiative. Mr Parker said 'Long-term sustainability is important for groups managing natural

resources and we welcome any support that helps us continue to deliver programs well into the future. This \$20,000 contribution will help us in the short-term to fund important activities.'

South Coast NRM will provide the funds prior to Christmas through a simple process that minimises the effort required by the groups.



DISTRIBUTOR

**NEWDEGATE
STOCK &
TRADING**

Ph: 9871 1556
MOB: 0428 711 556

24 hours fuel at Newdegate

**FOR ALL ON FARM
DELIVERIES OF FUEL**

Indian Ocean in the climate 'driver's seat' for 2019

■ Climate Kelpie

Some parts of southern Australia have received enough winter rainfall to make a reasonable start to the season. But for many, dry conditions are persisting and it's the cool water in the Indian Ocean to our north west that is a major driver of these conditions.

"Where you get warmer than average water is where you get more cloud and rainfall," says Dr Andrew Watkins, long-range forecaster with the Bureau of Meteorology. "This winter the warm water is on the other side of the Indian Ocean, near Africa, so that's where the cloud is (Figure 1)."

This scenario is referred to as a positive Indian Ocean Dipole, or +IOD. Essentially, the IOD is a measure of the difference between water temperature anomalies at either side of the Indian Ocean. "By anomaly, we mean whether the waters are warmer or cooler than normal," says Dr Watkins.

"At the moment the IOD is positive, which means more rain over the African continent and less for much of Australia. While this may help farmers in Africa, it's not so good for Australian farmers."

Important source of rain

The Indian Ocean Dipole is similar to the El Niño Southern Oscillation (ENSO) in the Pacific Ocean. Together the two are the most important year-to-year climate drivers for Australia.

In a neutral IOD - neither positive or negative - the equatorial trade winds blow from the west, pushing warm water towards Indonesia where clouds and moisture will form off the north west coast of Australia. This moisture can be a source for frontal rain systems for southern Australia.

If the westerly trade winds intensify, the IOD moves into its negative phase. More warm water is pushed towards Indonesia, generating more moist air and cloud and a much better chance of good rainfall to much of Australia.

"Unfortunately, in our current IOD positive phase the trade winds reverse, taking that warm water away from Australia," Dr Watkins says.

The Indian Ocean Dipole tends to form around May-June and lasts through to the end of spring. It breaks down quickly once the tropical monsoon season gets going in November-December.

A positive IOD typically means higher pressures, less cloud and less rain over central and south eastern Australia. Depending on the season, these effects can be felt more broadly.

"The positive IOD generally has a stronger impact on southern New South Wales, but this season we are really feeling the impact up into northern NSW and south-west Queensland," Dr Watkins says.

"Less cloud also means we get warmer daytime temperatures across southern Australia in winter and spring, and sometimes cooler nights in the north. For example, this year we've seen cooler nighttime temperatures in the Northern Territory, which is great for the mango industry."

A positive IOD is normally defined when temperatures exceed a $+0.4^{\circ}\text{C}$ threshold for eight weeks. However, the Bureau's measurements show that while the IOD moved into positive territory in May, it has hovered either side of that official $+0.4^{\circ}\text{C}$ threshold throughout June and July, before strengthening in August.

"Basically, we measure the difference in temperature anomalies in two 'boxes' (or locations) in the ocean," Dr Watkins says. "There have been some local weather effects near Africa that have seen the temperature in that specific location fluctuate. In reality, all the evidence is consistent with a positive IOD. Waters are cool near Indonesia and warm near Africa, and the clouds and winds have shifted to the west, away from Australia."

"Regardless of the numbers, our weather patterns in 2019 are clearly consistent with a positive IOD."

It's all about probabilities

"While the official thresholds haven't been reached, we are definitely seeing positive IOD-like behaviour with the wind and cloud patterns," says Dale Grey, seasonal risk agronomist with Agriculture Victoria.

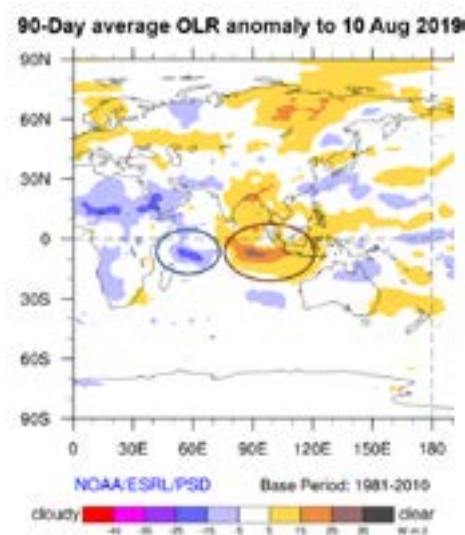
"But, as with all climate drivers, it is still all about probabilities."

"In a neutral IOD year we see about one third of the seasons being wet, one third dry and one third average (Figure 3 left)," he says. But in a positive IOD year the scales are tipped in favour of a drier than average year. It doesn't mean we can't get an average or wet year, just that it is less likely."

For example, Elmore in Victoria has experienced dry springs in two thirds of positive IOD years since 1900 (Figure 3 right), but only about a quarter of these were decile 1. Some of these years were about average (14 per cent) and some were even wetter than average (19 per cent), although none have been wetter since 1983.

"Climate models expect the IOD to stay in positive territory through spring," Mr Grey says. "This means there is definitely a higher risk of a dry spring and anyone relying on spring rainfall might want to play it on the safe side."

"Every season is different. In 2019 we have seen some large high-pressure systems, typical of a positive IOD, but they have been sitting far enough north to let some cold fronts through coastal South Australia, Victoria, Southern NSW and Tasmania. This is where we see other climate drivers, like the Southern Annular Mode, coming into play and helping frontal activity out. Frontal activity won't cut the mustard in spring through, where significant rainfall is needed from tropical sources."



■ Figure 1. Cloud and rainfall follow warm water.

This season the water in the Indian Ocean is warmer off the coast of Africa leading to more cloud (blue shading highlighted by blue circle) and cooler with less cloud near Indonesia (highlighted brown shading). Cloudiness is measured by the Outgoing Longwave Radiation (OLR). Source: NOAA Earth System Research Laboratory's Physical Sciences Division.

Serious impact

"Unfortunately, NSW and southern QLD have not been so lucky and are now very dry," says Dr Watkins. "In fact, NSW is so dry that the Bush Fire Danger Period has been declared two months earlier than usual for some regions. Increased bushfire risk is very closely associated with a positive IOD, more so than with El Niño, and we are already seeing an increased incidence of fires in Indonesia."

Recent positive IOD years include 2006, 2012 and 2015, although it is worth noting that in 2006 and 2015 a positive IOD coincided with an El Niño, amplifying the dry conditions.

When a positive IOD combines with an El Niño there is an increased likelihood of dry conditions for much of eastern and central Australia.

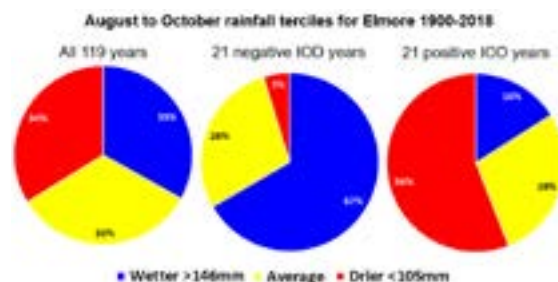
"At least in 2019 the positive IOD is not coupled with an El Niño" says Dr Watkins. "In 1982 this double whammy led to one of our worst droughts, with the Melbourne dust storm and the Ash Wednesday fires in February 1983."

"The same goes for the opposite situation. When a negative IOD combines with La Niña we can get very wet conditions like we had 1974 and 2010."

"Without the impact of El Niño we can be confident that the positive IOD will break down once the monsoon season kicks in around November-December," says Dr Watkins. "It may be of some consolation to know that the positive IOD won't have any impact on the potential for summer rainfall."



■ Figure 2. In a neutral IOD is trade winds bring warm water towards Indonesia generating clouds and moisture to the north west of Australia. In a negative IOD (-IOD) these winds increase often leading to wetter than average conditions. In a positive IOD (+IOD) the winds reverse taking the warm water and moist air towards Africa, leaving Australia with a lower chance of rainfall. Source: The Bureau of Meteorology.



■ Figure 3. In a neutral IOD year rainfall probabilities are unaffected (left): one third of seasons are average, one third dry and one third wet. In a positive IOD year (right), drier conditions are more likely but average or wet are still possible. Source: Dale Grey, Agriculture Victoria.

AWI Board Nominations: WAFarmers recommendations

■ WAFarmers

WAFarmers Wool spokesman, Steve McGuire encourages Australian Wool Innovation shareholders to vote in the Board election currently underway.

"Unlike MLA and GRDC, AWI has no representative oversight body which holds it to account. The only opportunity that woolgrowers have to influence the research and development corporation that they fund is by voting for candidates for the board," Mr McGuire said.

"Last year the Federal Government commissioned a \$900,000 strategic review of AWI by consultants EY. It found a number of governance issues of concern which the current board has resisted addressing.

"One of these was board renewal which EY suggested be driven with a policy of 10 year term limits for AWI directors.

"I also think of major concern is that the research body for wool does not have a board director with an

extensive history in sheep or wool research.

"Whilst the Board Nomination Committee has been made more independent, as per EY recommendations - the result has been bizarre.

"The BNC ignored candidates with ongoing research experiences as well as the call for significant board renewal. It also inexplicably recommended four candidates for three vacancies," Mr McGuire said.

WAFarmers on behalf of its members makes the following candidate recommendations regarding the upcoming AWI Board elections:

- Janelle Hocking-Edwards - Sheep researcher and Farmer
- Phillip Holmes - Sheep management consultant
- Noel Henderson - Stud breeder and former Multiplex board member

WAFarmers will continue to work with wool industry groups throughout the election process for the best outcome for Western Australian woolgrowers.

Make the most from your fertilizer investment



As your local Area Manager, Tim Donkin is keen to assist you with all of your fertilizer decisions this season.

So whether it's soil testing, nutritional advice, fuel gauges, or simply an on-farm appointment to discuss your requirements, give Tim a call today.

Mobile: 0408 902 355 **Email:** tdonkin@summitfertz.com.au



Community Events Notice Board

The Community Spirit is your community based newspaper,
covering local news and events.
We are pleased to support local events

TERMS & CONDITIONS

1. Posters are to be in **Black & White (Mono)** only.
2. Design must be **completed by client** and submitted as a JPEG or PDF.
3. Are to be for a **Local Community Event** only.
4. To be placed on Notice Board at Community Spirit discretion.
5. Notice Board is free providing there is to be a follow up article for the paper after the event. If no article provided then group will not be allowed this space again.
6. There is limited area for the Notice Board so first in will get the space.

For further information please contact the Community Spirit
Communications Manager on **0408 840 447**

Looking for the Community Transport
Vehicle Coordinator number to book your
next specialist appointment?

Call 0439 335 147



SEWING BASICS WORKSHOP

Saturday 23rd November 10:00am

\$25 PER PERSON
INCLUDES EVERYTHING

Make your own comfy pj pants to take home

BASIC COMPUTER COURSE



Learn the basics and be introduced to the world of computers in this 2 hour workshop.

Understand computer terminology, hardware, software, apps, internet, computer safety and maintenance, how computers work, and more.

TUESDAY 12TH NOVEMBER 10AM TO 12PM
\$25 PER PERSON REGISTER AT HOPETOUN CRC
PH 9838 3062 EM HOPETOUN@CRC.NET.AU

 Hopetoun
Community Resource Centre
www.hopetounwa.com



facebook workshop

Join us for this easy, fun & informative course on how to use facebook

Explore the basics of facebook, including your profile page, finding friends, sharing photos and stories, your newsfeed, timeline, privacy settings, joining group pages and more.

Tuesday 26th November 10am - 12pm
Cost \$25 per person. Register at Hopetoun CRC
P: 9838 3062 E: hopetoun@crc.net.au

 Hopetoun
Community Resource Centre
www.hopetounwa.com

Sport News



■ Geoff, Frank, Alec, Herbie, Coral and Lindsay.

Bowling along

■ HOPETOUN BOWLING CLUB

Hovara Pennants was played at Hopetoun on Saturday October 19th.

On Sunday 20th it was the Robert Bowling and Gus Cousins Memorial Day with only 16 players participating, playing 2 games of 8 ends and one of 6 ends 2x4x2 pairs. Mixing up partners and opponents each game so you played with nine different players during the afternoon.

At the end of the day only one player had won three games and that was Frank Green with 3 wins +30, all the following winners won two games—Kevin Herbert +4, Coral Grant and Lindsay Chambers +3, Alec Woods -1, Geoff Earl -9.

We then enjoyed a sausage sizzle tea and a drink for Gus and Robert—thank you to Judyanne and Pam for sponsoring the day.

The club now has a Facebook Page—thank you to Michelle for setting this up.

We are also going to run Corporate Bowls in February—if your business or club is interested in entering a team of four please give Michelle a call or any club member.

Ladies Bowls October 23rd with six ladies playing 3 bowl Triples. The winners were Coral Grant, Eva Flanagan and Carol Taylor.

Mixed Scroungers sponsored by Eva and Tim Flanagan with 14 players. Rink winners Frank Green, Scott Oakley, Ron Davis and Lindsay Chambers. The winners were Frank and Lindsay.

Sunday October 27th with 14 players playing Social Bowls pairs and Triples.

Ladies Bowls October 30th with three ladies having a roll up.

Mixed Scroungers with 14 players playing for Margot Hawkins day. Rink winners Geoff Earl, Alan Grant, Coral Grant and Des Barr. The winners, keeping it in the family, were Alan and Coral.

The Lotto winners were number 6 Lindsay and Di Chambers, number 38 Maureen Dillon.

— Pam Cousins, Ladies President.

Smartphone Workshop

Would you like to know more about your Smartphone?
Explore your settings, find good apps, learn about privacy & security,
and easy ways to stay connected to your friends and family

Tuesday 10th December

10am to 12pm - \$25 per person

Register at Hopetoun CRC

Ph 9838 3062 Em hopetoun@crc.net.au

Hopetoun
Community Resource Centre

www.hopetounwa.com

Find us on
Facebook



LOOK LOCAL

Most phone numbers, email and web addresses on this page are hyperlinked.
Just click on it on your smart device to contact the business.

AGRICULTURAL SUPPLIES

RAVENSTHORPE AGENCIES

BERNIE & ROZ BIDDULPH
44 Morgans Street (PO Box 126)
RAVENSTHORPE WA 6346

PHONE: (08) 9838 1236

FAX: (08) 9838 1206

MOBILE: 0429 381 236

EMAIL: ravyag@westnet.com.au



Fencing ▶ Batteries ▶ Oils & Lubricants ▶ Chemicals & Fertilisers
▶ Water Pumps ▶ Water Tanks ▶ Water Pipe & Fittings
▶ Dog & Cat Food ▶ Workwear & Boots AND HEAPS MORE!

EARTH MOVING

GP&DR Belli Mini Earthworks

WE DO:

- Chain Trenching (Back Hoe attachment) • Slashing • Filling and leveling Pads • Post holes and footings with augers to 900mm Diameter,
- Rotary Hoeing • Retainer Walls • Site, Yard & Stockyard Clean Up
- Landscaping • Sand, Gravel & Loam Supplies • Tip Truck & Hiab Hire

For enquiries contact: Greg or Di
Mob: 0427 027 003



MASSAGE



Remedial Massage & Bowen Therapy

Glenys-Joy Brown 0428 502 097

Health Rebates Available

AUTOMOTIVE

EMG ESPERANCE MOTOR GROUP

**Service, sales, used
and new vehicles**

ESPERANCE MOTOR GROUP PTY LTD
Cnr Norseman & Sheldon Roads, Esperance
Ph (08) 9071 0100 • Fax (08) 9071 0129

EARTHWORKS

HOPETOUN EARTHWORKS

- Earthworks • Trenching • Siteworks
- Clearing • Septic • Bobcat & Backhoe Hire

Ph: 9838 3336

Fax: 9838 3360 Mobile: 0427 383 336
Supply & Laying Ready Mixed Concrete

MASSAGE

AS SMART



Remedial and Relaxation Massage

(Remedial Therapy is claimable)

Member of AMT

Specialist Techniques in Pain Management
For all muscular aches and pains

LET OUR EXPERIENCE WORK FOR YOU!

0428 422 368

www.smartremedialmassage.com.au
2/51 Dempster St, Esperance

BUILDING SERVICES

HOPETOUN GARDEN AND PROPERTY SERVICES

Our Professional Building Services

- Building Maintenance • Shed Tidy Ups
- Carpet Cleaning • Floor Tile Cleaning
- Upholstery Cleaning • Exterior Wall Cleaning
- Gutter Cleaning • Window Cleaning • PVC Blind Cleaning

**CALL DONNA AND ALAN FOR A
QUOTE ON 0400 716 885**

Email: hoptoungapsservices@icloud.com
ABN: 65467395097

HAULAGE

HALLAMS CARTAGE CONTRACTORS



Specialising in:

- Water Cartage • Grain Carting
- General Freight • Wool Cartage
- Side Tippers • Gravel & Sand
- Roller Hire • Low Loader Hire

Kevin Ph: 0429 049 114
email: hallamscartage1@bigpond.com

PAINTING



PAINTING

Reg. #4709

Domestic, Commercial, Industrial,
Farm Painting Specialty

Clean, Precise and Quality work.

Local references available.

For FREE Quotation and Booking
Call Mick

0419 701 332

CRANE

HOPETOUN MOBILE CRANE HIRE



20 tonne Franna

Steve Williams 0427 282 116

LEGAL

LANSELL LEGAL FOR ANY LEGAL ISSUE CONCERNING MEMBERS OF THE LOCAL COMMUNITY.

Monthly visits and 24/7 telephone advice
from Phil's office in Perth.

phil@lanselllegal.com.au

PO Box 4189 Mosman Park

Or locally at 16 Culham Street Hopetoun

Website at www.lanselllegal.com.au

Liability Limited by a Scheme Approved under Professional Standards Legislation

PLUMBING



0407 358 983

PL 923 & GF 002820

DISCOUNT RATES

The Community Spirit now has discounted rates for Not-for-Profit groups of 15%

If Not-for-Profit groups would like to receive any further discounts then please contact the committee to request it. The Committee is happy to sponsor large local events, but need advance notice to discuss the amount of the discount.

ADVERTISING CLIENTS: Receive a discount of 5-10% if you sign up for a 6-12 month period and if you are prepared to provide submissions for the paper.

For either of these great deals please don't hesitate to contact Kylie at contributions@cospirit.net



LOOK LOCAL

Most phone numbers, email and web addresses on this page are hyperlinked. Just click on it on your smart device to contact the business.

RESOURCE CENTRE



Hopetoun Community Resource Centre
Your local connection

46 Veal Street Hopetoun WA 6348
P: 08 9838 3062 F: 08 9838 3590 E: hopetoun@crc.net.au
www.hopetounwa.com

• Visitor Information Centre	• Public Library
• Internet Access & WiFi	• National Park Passes
• Photocopying & Faxing	• Room Hire
• Professional Photo Printing	• IT & Office Supplies
• Government Access Point	• Training Courses
• TransWA Bookings	• Handmade Gifts

SHED BUILDING



Armand Javellana
Business Owner

AUSSIE SHEDS ALBANY

*Better choice
Better quality
Better price*

f @aussieshedsalbany
Mobile: 0421 583 757
Email: Aussieshedsalbany@gmail.com

SMASH REPAIRS



Albany Smash Repairs

Paul Armstrong
Proprietor

Tel 9842 2838
Fax 9841 6131
paularmstrong@smashrepairer.com

14 Prior Street, Albany WA 6330 • A/h 0418 936 010
• All Makes & Models • All Work Guaranteed
24 Hrs Towing

TYRES



HOPETOUN TYRE SERVICE

GOOD RANGE OF

- Car • 4x4 • SUV Tyres
- Truck & Tractor Tyres
- Century Batteries
- Mobile Service

Contact Mary or Stephen
0407 313 062 or 9838 3156

Quiz courtesy of Businessballs.com



1. Which rap superstar featured on the hit "Forever Young" with Mr Hudson? Dr Dre, Sean Paul, Jay Z, Eminem
2. Who played the title role in the 1968 film 'Witchfinder General'?
3. What is the capital of Germany?
4. Who at the age of 18, finished 4th in the 1998 Golf Open? Mark Pugash, Justin Rose, Tiger Woods, Lee Westwood
5. The Benwood, known as one of the most dived shipwrecks in the world, lies off which US state?
6. What was the name of the clothes shop opened by Mary Quant on London's King's Road in 1955?
7. Members of the 1966 World Cup winning English football team, Bobby Moore, Martin Peters and Geoff Hurst played for which league team?
8. Kielce, Olsztyn and Opole are cities in which European country?
9. Madison Square Garden in New York City opened during which decade of the 20th Century?
10. Which actor narrated the 1970's UK tv documentary 'The World At War'?
11. Meatloaf released "I Would Do Anything For Love" in which year? 1991, 1997, 1995, 1993
12. PA is the abbreviation for which US state?

13. Which fictional 'super heroine' is the alter-ego of Barbara Gordon?
14. The Golden Cage is an annual award given to the best goalkeeper in football in which European country?
15. Thanatology is the scientific study of what?
16. In the Star Wars series of films who is revealed to be the father of Luke Skywalker?
17. The drummer of which band was the winner of the 2011 UK television show 'Strictly Come Dancing'?
18. Which planet possess a ring entitled Egalite 1? Saturn, Neptune, Jupiter, Uranus
19. The airport with the code LGA can be found in which US State? New York, California, Texas, Florida
20. Complete the title of the 2010 Flo Rida hit "..... Can't Handle Me"? Everyone, Club, You, People
21. How many bones are located in the human Sternum? 1, 8, 4, 10
22. Mount Everest is the highest point on which planet? Earth, Venus, Mars, Mercury
23. Which is the highest waterfall in the world?
24. The Crows Nest can be found at which golf course? Augusta, St. Andrews, Palm Beach, Brookline
25. Who had a 2007 hit with "Big Girls Don't Cry"? Gwen Stefani, Beyonce, Fergie, Kelly Clarkson
26. Which rap star featured on Ciara's hit "Oh"? Ludacris, Jay Z, Kanye West, Nelly
27. Which four letter word beginning with X is an Arctic fork-tailed gull?
28. Who plays the title role in the US television series 'Buffy the Vampire Slayer'?
29. Which of these Uranian moons is largest? Ariel, Puck, Juliet, Miranda
30. What was the name of the campaign, endorsed by British Prime Minister Harold Wilson in 1968, to boost productivity by asking people to work an extra half an hour each day without pay?

Public Notices

SWANS VETERINARY SERVICE

Morgans St, Ravensthorpe
Tuesdays by Appointment
Phone 9071 5777

THINK TANK ANSWERS FROM ISSUE 19:

1. A peasant girl; 2. Ann Summers; 3. Face; 4. Sisyphus; 5. Fore!; 6. May; 7. Gene Autry; 8. Nine Inch Nails; 9. Red Hot Chilli Peppers; 10. Eastern Siberia - Pacific Ocean; 11. Prince Edward; 12. Right Thurr; 13. Berlin; 14. Augusta; 15. Milan; 16. Gerald R.Ford; 17. Sylvia; 18. Grover Cleveland; 19. Breasts; 20. Apollo; 21. Hillary Clinton; 22. Radish; 23. Winston Churchill; 24. Pandora; 25. Breakfast; 26. The Seasons; 27. Red; 28. Glenn Gould; 29. Goose and Gridiron; 30. Dick Van Dyke

Disclaimer:

1. No liability shall be incurred by Community Spirit by reason of any amendments to, or error or inaccuracy in, or the partial or total omission of an advertisement, or by reason of delay or default or from any other cause whatsoever.

If in the opinion of Community Spirit the error clearly reduces the value of the advertisement and the advertiser notifies it to Community Spirit within seven days of the publication date, then no charge will be made for the advertisement containing the error.

2. While the Compilers normally aim to publish all material submitted if space is available, Community Spirit reserves the right to refuse to publish or republish any contribution or advertisement without giving any reason.

3. No articles, letters or advertisements will be accepted which may appear to be defamatory or accusatory, or to favour one side in a legal dispute.

4. Community Spirit reserves the right to shorten or otherwise amend any contribution other than advertisements. Articles from a Not for Profit organisation regarding past events that thank sponsors within the body of the article, will be free of charge.



UPCOMING EVENTS

November

- 8 Pain Relief & Birth Interventions Telehealth Class, 2pm
- 8 Club Merlot
- 10 Ravensthorpe Wildflower Show AGM, 11am, Red Room, Ravensthorpe Community Centre
- 12 Basic Computer Course, 10am-12pm, Hopetoun CRC
- 12 Southerners General Meeting, 7pm
- 14 Postnatal Care & Early Parenting Telehealth Class, 2pm
- 21 Bubs & Toddlers First Aid Session, 9am, Playgroup (Ravensthorpe Youth Group Building)
- 22 Breastfeeding Telehealth Class, 2pm
- 23 Sewing Basics Workshop, 10am, Hopetoun CRC
- 26 Facebook Course, 10am-12pm, Hopetoun CRC

December

- 1 Hopetoun Markets
- 5 Kings Park Fashions—Pop Up Shop, Mary Ann Haven Hall, Hopetoun
- 10 Smartphone Workshop, 10am-12pm, Hopetoun CRC
- 10 Southerners General Meeting, 7pm
- 11 Ravensthorpe Shire Seniors Christmas Luncheon, noon, Hopetoun Community Centre
- 13 Club Merlot
- 14 Ravensthorpe Community Christmas Tree
- 31 Vacsium

January 2020

- 1-24 Vacsium
- 10 Club Merlot
- 14 Southerners General Meeting
- 18 Paddy's Day Market

For contributions to the Calendar of Events email the details to contributions@cospirit.net

REGULAR EVENTS

HOPETOUN

BOOTSCOOTING Fridays 1.30 til 3.30 at Mary Ann Haven, Veal Street Hopetoun please Phone Rosa 0428 383 034 or Trix 9838 3378.

BOWLS Wednesday Ladies 8.45am, Mixed Scroungers 1pm, Thursday 9.30 am Coaching with Coral. Friday 4pm Roll up and fun. Sunday 1pm Social Bowls. Everybody welcome.

CRAFT Mondays from 1pm at Mary Ann Haven, all welcome.

CRC, Library & Visitor Centre Open Monday to Friday 9am to 4pm. Saturdays 10am to 12pm (Visitor Centre only). Committee Meetings bi-monthly, ask at CRC.

CWA 2nd Monday 1.30pm at Centre

CWA SHOP Saturdays 8.30 to 11.30. Library, secondhand goods, fresh vegetables, fruit, eggs, cakes and pies, honey, jams, and relishes, Asian food.

FIRE BRIGADE TRAINING Last Sunday of every month at Emergency Services Building, Veal St.

GOLF Saturday Ladies and Men's Golf 18 holes - Winter season names in by 11.30 Tee Off 12 noon, - Summer Season names in by 12 noon Tee Off 12.30. Thursday Scroungers Ladies and Men's Golf 9 or 12 holes depending on the weather, names in by 1.15 Tee Off 1.30. Visitors and Learners are always welcome.

HACC HEALTH SERVICE Day Centre Program, Tuesdays, alternating weekly between Hopetoun and Ravensthorpe. Contact HACC for details.

HOPETOUN LOCAL MARKETS first Sunday of each month except June, July and August when the markets go into recess for the winter. Ray White Real Estate outside area at 9am to 1pm. January markets will also be the first Sunday of the month. Please contact Robyn Cockram 0429 925 569 or cockram36@gmail.com for more details

HOPETOUN PROGRESS ASSOCIATION Tuesday - Friday 9am till 2pm. Phone/fax 9838 3363. Monthly meeting last Tuesday of the month 7.30.

MACHINING GROUP Thursdays phone Wilma 9838 3098 or Mary 9838 3243.

MEN IN SHEDS Tamar St Tues & Thurs 8.30am-12, 1-3pm and Sat 8.30am-12pm. All men welcome contact Darryl Quinn 0428 442 517.

MEN'S STAY ON YOUR FEET Tuesday and Thursday, 9-10am at Men's Shed, Tamar St.

OLD BASTARDS CLUB Men only BBQ, Fridays. Contact Geoff Earl 0418 905 555 for details.

POOL COMPETITION/DARTS Wednesdays 7.30pm Port Hotel.

POOL COMPETITION Wednesday 7pm Wavecrest Bar and Bistro.

SEA SEARCH AND RESCUE Monthly training at Emergency Services Building, as indicated by regular signage on Veal St.

SENIOR CITIZENS Thursday 1.30 pm. Meetings 1st Thursday every second month from June, 10 am at Mary Ann Haven.

SOUTHERN SCRIBES Fourth Saturday 1pm, phone 9838 3472.

STAY ON YOUR FEET Tuesdays & Fridays 9am-10am Mary Ann Haven.

STORYTIME Every Monday 10am (except school and public holidays) at Hopetoun Public Library (inside Hopetoun CRC) Free stories, songs, rhymes and craft. Suitable 0-5y.

WINDSPRAY ART We meet every Thursday 10-2 at 65 France St. New members ALWAYS most welcome to join us. Watch CRC notice board for upcoming courses. Enquiries: Beryl Semple 0428 411 171, Louise Lodge 0427 700 613.

MUNGLINUP

GOLF Ladies Golf: Wednesday by 8.45am Men's Golf: Saturdays by 11.30am.

RAVENSTHORPE

GOLF April- October Ladies Golf: Wednesday names in by 9am Men's Golf: Saturday names in by 12pm

GYM membership available. Contact Ravensthorpe Shire 9839 0000.

HAND GUN CLUB Every second Sunday 9am Contact Trina 0437 090 303.

HOSPITAL AUXILIARY meets on second Tuesday of every second month at the red room. Starting Feb 14, 2017. Contact Judy Harp 9838 1565.

MUSEUM/INFORMATION CENTRE Open 10 am to 4 pm Monday to Saturday or by appointment 9838 1044 or 9838 1583.

OP SHOP trading 10am to 1pm Tuesdays to Saturdays.

PROGRESS ASSOCIATION MEETINGS held on the third Wednesday of each month (except September & December) at 7pm, Red Room, Ravensthorpe. New members always welcome.

RAVENSTHORPE BASKETBALL For more information contact Ethan Clarke 0452 261 717.

RAVENSTHORPE PLAYGROUP Thursday 9-1130am at the Ravensthorpe Youth Club building. Please bring a piece of fruit to share.

RAVENSTHORPE REGIONAL ARTS COUNCIL RRAC Dance Program (During School Term2, 2019) Weekly Dance Classes for Adults and Children. Hopetoun, Ravensthorpe & Lake King. Contact Kirsty rraccoordinator@westnet.com.au or 0438 945 405. Facebook: RRAC Dance

STATE EMERGENCY SERVICE meets at 7.30 pm on second and fourth Wednesday of month at SES HQ, Morgan St.

STAY ON YOUR FEET EXERCISES exercises at Senior Citizens Centre, Fridays 10-11am.

COMMUNITY RESOURCE CENTRE & LIBRARY Open all day from 9am-5pm Monday to Friday.

TAI CHI Senior Citizens Center each Wednesday 9.30 am - 10.30am \$2. Contacts Jessie Fairhead 0429 389 023 or Liz Aberline 0427 839 988.

YOGA CLASSES Ravensthorpe District High School Hall. Monday, Wednesday, Friday, Saturday, Sunday from 6:45 PM to 7:45 PM. Check Facebook: 'Philachyan Life Skills' for schedule updates

If you know of any changes that are required to REGULAR EVENTS, please ensure you notify us at contributions@cospirit.net.

CHURCH NOTICES

ANGLICAN CHURCH

St Andrews Ravensthorpe service on the first and third Sunday of the month at 11am. Peter the Fisherman, Hopetoun service every Sunday at 9am followed by morning tea. Enquiries Kevin and Lyn Hosking, 9838 3130.

CATHOLIC CHURCH

Saturday before 1st Sun of the Month Hopetoun 6pm
Saturday before 3rd Sun of the month Hopetoun 6pm
1st Sunday, Ravensthorpe, 8.30am
3rd Sunday, Ravensthorpe, 8.30 am
For enquiries please call Fr A Chukwu 0470 439 768.

RAVENSTHORPE CHRISTIAN FELLOWSHIP

Our services for 2019 will be on the second and fourth Sunday's.
Second Sunday at 10 am and fourth Sunday at 10am OR 2pm.
For enquiries contact Rob Lloyd 9838 1153 or 0427 381 153 or Ron Ross 9838 1188 or 0429 381 188

BUSINESS AND SERVICES DIRECTORY

ALBANY

Albany Fitness 9842 1200 • sales@albanyfitness.com.au
Albany Smash Repairs 9842 2838 • paularmstrong@smashrepairer.com
 www.smashrepairs.com.au
Smith's Aluminium 9842 2617 • smithali@westnet.com.au

DOCTOR'S SURGERY

Hopetoun Ravensthorpe Medical
 Hopetoun—Mon, Wed, Fri 9am-5pm 9838 3854 • F 9838 3729
 Ravensthorpe—Tues, Thurs 9am-5pm 9838 1600
Community Transport Vehicle Co-ordinator Chelle 0439 335 147

ESPERANCE

ARC Accounting 9071 5833 • admin@arcaccounting.com.au
AS Smart Remedial & Relaxation Massage Peter Dempster 0428 422 368
 bam.dempster@bigpond.com • Saturday morning appointments available
Compass Conveyancing (WA) 9071 1655 • meredith@espconvey.com.au
Esperance Bay Dental 9071 5888 • www.esperancebaydental.com.au
EMG Ford 9071 0100 • accounts@emgesperance.com.au
Esperance Insurance Broker Rod Parsons 9071 3600 • M 0427 712 902
 rodp@espib.com.au • www.espib.com.au
Esperance Toyota 9071 0100 • accounts@emgesperance.com.au
Powerplant Motorcycles 9071 1780 • tim@powerplantmc.com.au
 www.powerplantmotorcycles.com.au
Sportpower - Greg Bower 9071 2365 • M 0402 124 681
 esperance@sportpower.com.au

HOPETOUN

4 Rivers Plumbing & Gas 0407 358 983 • petersmith@4rivers.com.au
Belli Mini Earthworks Ph 9838 3898 • M 0427 027 003 • diannegreg@wn.com.au
Carpet Cleaning hopetoungapservices@icloud.com
Hallams Cartage Contractors M 0429 049 114 • hallamscartage1@bigpond.com
Hopetoun Beachfront Chemist 9838 3333 • hopetouchemist@gmail.com
Hopetoun Community Resource Centre 9838 3062 • hopetel@comswest.net.au
Hopetoun Earthworks & Concrete Supply 9838 3336 • 0427 383 336
Hopetoun Garden & Property Services 0400 716 885
 hopetoungapservices@icloud.com
Hopetoun General Store 9838 3052 • russ.asty@bigpond.com
Hopetoun IGA 9838 3919 • russ.asty@bigpond.com
Hopetoun Mobile Crane Steve 0427 282 116 • steveglens@gamil.com
Hopetoun Slashing 0429 049 114
Hopetoun Transport and Haulage 0429 049 114
Hopetoun Tyre Service 9838 3156 • M 0407 313 062 • hopetire@bigpond.com
Lansell Legal—PO Box 4189 Mosman Park 6912 0438 738 965
 phil@lanselllegal.com.au
Little Barrens Early Learning Centre 9838 3278 • littlebarrenselc@bigpond.com
Pest Control Local & Termites 0429 801 295 • casperprince@bigpond.com
Port Hotel 9838 3053 • F 9838 3036 • Kitchen 9838 3375
 www.porthotel.com.au
Ray White Rural South Coast WA 9838 3100 • F 9838 3250 • M 0429 299 797
 raywhiteruralsouthcoastwa.com.au
Wavecrest Bar & Bistro 9838 3400 • venuemanager@wavecrest.net.au
Wavecrest Village 9838 3888 • village@wavecrest.net.au

JERRAMUNGUP

Jerramungup Electrical Service M 0428 351 171 • jmpelectrical@bigpond.com

LAKE KING

Lake King Agencies & Roadhouse 9874 4094
Lake King Tavern, Motel & Caravan Park 9874 4048
 lakekingtavern@gmail.com • www.lakekingtavernmotel.com.au
Landmark Lake King—Ross 9874 4004 • F 9874 4005 • M 0428 105 059

RAVENSTHORPE

4 Rivers Plumbing & Gas 0407 358 983 • petersmith@4rivers.com.au
5K Livestock and Bulk Pty Ltd Ben Sutherland 0428 271 818
Dingo's Dog Kennels & Riley's Cattery 9838 1092 • M 0427 381 092
Eremia Camel Treks & Camel Museum 9838 1092 • M 0427 381 092
 animamundi@westnet.com.au
FE Daw & Sons 9838 1008 • fedaw@wn.com.au
Freight Lines General - Murray 9838 1343 • F 9838 1382 • M 0427 381 211
Hannaford Seed Grading M 0427 268 136 • hannaford.ravensthorpe@gmail.com
Joryn Haulage - Cameron & Dana Fairhead 0429 389 013 • 0428 389 013
 jorynhaulage@bigpond.com
Madden Rural Jordan 0428 542 428 • Mick 0429 380 081 • Steve 0428 380 081
 admin@maddenrural.com
Meridian Agencies, Toys, Gifts and Post Office 9838 1276
Palace Motor Hotel 9838 1005 • admin@ravyhotel.com.au
R & L Construction 9838 3888 • M 0428 381 232
R and R Heavy Diesel Services M 0438 164 616 • randrhds@bigpond.com
Ravensthorpe Agencies - B&R Biddulph 9838 1236 • ravyag@westnet.com.au
Ravensthorpe Agricultural Initiative Network 9838 1018 • M 0417 174 299
Ravensthorpe Bulk Haulage Ph/fax 9838 1497
 rbh@westnet.com.au • Wayne 0427 381 497 • Debbie 0428 381 497
Ravensthorpe Cellars 9838 1808 • ravycellars@westnet.com.au
Ravensthorpe Community Resource Centre 9838 1340
 ravensthorpe@crc.net.au
Ravensthorpe Mechanical Service 9838 1146 • M 0428 381 146
 ravmechservice@bigpond.com
Ravensthorpe Motel 9838 1053 • F 9838 1366
Ravensthorpe Pharmacy 9838 1020 • ravensthorpepharmacy@gmail.com
South Coastal Agencies, Landmark 9838 1081
 kyle.forsyth@landmark.com.au • M 0417 912 318
 tom.major@landmark.com.au • M 0403 782 887
Yummylicious Candy Shack 89 Morgans St, Ravensthorpe Ph: 08 9838 1647
 darrincharg@gmail.com

EMERGENCY NUMBERS

EMERGENCY TO REACH ALL SERVICES 000
 Ambulance NON-Emergency 13 12 33
 Hopetoun Volunteer Marine & Rescue 9838 3207
 Lake Grace Hospital 9890 2222
 Police - Hopetoun 9838 3724
 Police - Jerramungup 9835 0222
 Police - Lake Grace 9865 1007
 Police - Ravensthorpe 9838 1004
 Ravensthorpe Hospital 9838 2211
 State Emergency Service 1300 130 039

All phone numbers, email and web addresses on this page are hyperlinked. Just click on it on your smart device.



Shooters finish for the year

■ RAVENSTHORPE HANDGUN CLUB

The Ravensthorpe Handgun Club held its annual wind up and presentations on Sunday October 20th with a good turnout.

We held a novelty shoot that made things interesting with some trying to second guess what was required of them with the unusual targets and shooting positions.

Any handgun was allowed for the shoot which included revolvers alongside semi-autos with or without optics from

.22 caliber up to .357magnum.

Great prizes were on offer for the progressive raffle on the day and we would like to give a huge thank you to local and outside businesses for their generous donations—Landmark Ravensthorpe, Ravensthorpe Mechanical, Shell Roadhouse, Ravensthorpe Agencies, Palace Hotel, Barry's Firearms Beckenham, Arctic Fox Optics.

Results for the year were:

Rim-fire Revolver

A Grade: 1st Ray, 2nd Trina, 3rd Ted
B Grade: 1st Scott, 2nd Bill, 3rd Geoff
C Grade: 1st Don, 2nd Rob, 3rd Brett

Centre-fire Revolver

A Grade: 1st Ray, 2nd Trina, 3rd Scott

Mandar Rim-fire

A Grade: 1st Ray, 2nd Justin, 3rd Mark
B Grade: 1st Bill, 2nd Scott, 3rd Geoff
C Grade: 1st Ted, 2nd Don, 3rd Ken

Mandar Centre-fire

A Grade: 1st Justin, 2nd Ray, 3rd Mark

Rim-fire Rifle

1st Ray, 2nd Ross, 3rd Bill

Highest Scores for individual targets in the Revolver Match (possible of 100.10)

50m - Justin 97.3
25m - Justin 98.2
Rabbit - Justin 98.1
Running fox - Ray 99.1
Fox heads - Trina 97.3
Bear - Justin 100.7

Most improved shooter was Geoff having only been shooting with us for one season and could be A grade before we know it—well done.

If you are interested in participating in an exciting, safe and challenging sport we will be starting up again in January 2020. Visitors welcome.

For more information and details about safety training available at the range for new shooters in the off season, contact Trina 0437 090 303 or Bill 0429 383 120.

—T Henderson



Volunteer Position Vacant

St John WA - Ravensthorpe Sub Centre
are looking to recruit a

Community Transport Coordinator

Expressions of interest are now being sought
for the position of Community Transport Coordinator,
a Volunteer role with St John.

Are you friendly and community minded?
Do you like helping people and have a few hours spare each week?

Applicant will be required to apply online
as a Volunteer Support Officer at www.changelives.com.au

For more information contact Chairperson,
Wendy Price on 0428 133 498

Expressions of interest close on Monday 4 November 2019

