

**\$2.00**

# Community Spirit

Distributed fortnightly in Fitzgerald, Hopetoun, Jerdacuttup, Lake King, Lake Varley, Munglinup, Newdegate and Ravensthorpe



The Community Spirit would like to wish everyone a safe and very Merry Christmas.  
May 2019 be a happy and prosperous year.



# 0407 358 983

PL 923 & GF 002820



## ALL ENQUIRIES:

contributions@cospirit.net  
Kylie Thomas, Co-ordinator, **0408 840 447**  
Or Attn: Contributions, PO Box 135,  
Ravensthorpe 6346.

Or Hopetoun and Ravensthorpe  
Community Resource Centres will accept  
written articles.

Include name, address and phone details  
in all correspondence.

## GENERAL ADVERTISING AND CLASSIFIEDS

Content to be sent in Word, PDF or JPEG  
formats. Classified proofs on request only.

## ARTICLES AND PHOTOS

Articles to be sent in Word format.  
Photos to be sent in JPEG format.  
Photos minimum size 500mb.  
Maximum of two photos per email.  
Photos of children require parental  
permission.

## ACCOUNTS AND SUBSCRIPTIONS

Email financeadmin@cospirit.net  
Phone enquiries Sandi Hunter,  
**0417 950 615.**

## MANAGEMENT COMMITTEE

Email secretary@cospirit.net or  
PO Box 135, Ravensthorpe 6346  
GRIEVANCES—contact secretary by  
email secretary@cospirit.net

## NEXT ISSUE DEADLINE 5pm, Thursday February 7, 2019

Not for profit community groups distribute  
the paper on behalf of the Management  
Committee. From sales in these areas a  
donation is made to the relevant distribution  
group.

Groups who will be supported by your  
purchase of the paper in 2016 are:  
Hopetoun - Hopetoun Progress Association;  
Jerdacuttup - Parents and Citizens  
Association; Lake King - Parents and  
Citizens Association; Munglinup - Pony  
Club; Ravensthorpe - Parents and Citizens  
Association and Newdegate - Community  
Resource Centre.

ABN: 73 065 010 521

Printed by Fairfax Regional Media, Mandurah on behalf of  
the Community Spirit newspaper committee, PO Box 135,  
Ravensthorpe 6346.

## HOW TO CONTACT

### Ambulance:

Emergency ..... 000  
Non-Emergency ..... 13 12 13

### Hospitals:

Ravensthorpe ..... 9838 2211  
Esperance ..... 9071 0888  
Albany..... 9892 2222

### Doctors Surgery:

Hopetoun ..... 9838 3854  
Ravensthorpe ..... 9838 1600

### Dentist:

Ravensthorpe ..... 9838 1322

### Esperance Hospital

Public Dental Clinic..... 9071 0889

### Community Nurse/Child Health:

Ravensthorpe ..... 9838 2211

### Extended Care Nurse:

Hopetoun ..... 9838 3323

### Home and Community Care

Office ..... 9838 3144  
Mobile ..... 0429 889 675

### Hospital Auxiliary:

Second Tuesday of the month 1.30pm in  
the Red Room  
Contact Judy Harp

### Allied Health:

Services such as Physio, Dietician,  
Occupational Therapy and Speech  
Pathology are available. Contact  
Ravensthorpe or Esperance Hospital to find  
out more about these services.

### Mental Health:

There is a Mental Health service available  
currently. Please contact Ravensthorpe  
Hospital to find out more about this service.

## SHIRE OF RAVENSTHORPE COUNCILLOR'S CONTACT DETAILS

**Keith Dunlop**—Shire President..... Phone: 9838 3302; Mobile: 0428 383 302  
Email: ann.dunlop@bigpond.com

**Jules Belli**—Deputy Shire President ..... Mobile: 0427 440 582  
Email: crjulesbelli@gmail.com

Peter Smith..... Mobile: 0407 358 983  
Email: petersmith@4rivers.com.au

Ian Goldfinch ..... Phone: 9838 5049; Mobile: 0428 385 049  
Email: iangoldfinch@westnet.com.au

Tom Major..... Mobile: 0403 782 887  
Email: tommajor86@gmail.com

Kerry Dickinson ..... Phone: 9838 1259; Mobile: 0429 381 014  
Email: bushcodepost@gmail.com

Graham Richardson ..... Phone: 9838 3880; Mobile: 0474 492 810  
Email: hambethpark@live.com.au

## Word of the Day repartee noun | rep-er-TEE

### Definition:

- 1 a : a quick and witty reply
- b : a succession or interchange of clever retorts : amusing and usually light sparring with words
- 2 : adroitness and cleverness in reply : skill in repartee

### Did You Know?

One person often noted for her repartee was Dorothy Parker, writer and legendary member of the Algonquin Round Table. Upon hearing that Calvin Coolidge had died, she replied, "How can they tell?" The taciturn Coolidge obviously didn't have a reputation for being the life of the party, but he himself came out with a particularly famous repartee on one occasion. When a dinner guest approached him and told him she had bet someone she could get him to say more than two words, he replied, "You lose." Repartee, our word for such a quick, sharp reply (and for skill with such replies) comes from the French repartie, of the same meaning. Repartie itself is formed from the French verb repartir, meaning "to retort."

### Examples:

"One of my favorite parts of that scene was Kim's repartee with him, trying to show how smart she is, him pretending to forget the case and her knowing it—all just so he could test her." — Patrick Fabian, quoted in Variety, 11 Sept. 2018



# Santa comes calling at the Park

## ■ 2018 HPA SANTA IN THE PARK

THANK you to all who helped with our 2018 Santa in the Park. We hope you all enjoyed the day.

A special thank you to Santa and his helpers and his trusty ponydeers.

We would like to wish everyone a Merry Christmas and a Happy New Year and we look forward to enjoying the new year with you all at our 2019 Summer Festival.

—HPA



• MERRY •

*Christmas*  
and  
**Happy New Year!**



*The Team at 4 Rivers Plumbing & Gas would like to wish you & your families a safe & happy Christmas & New Year.*

Call **Peter Smith 0407 358 983** for any emergency plumbing throughout the Christmas & New Year period.

Pete, Marie-Anne & Team look forward to providing plumbing & gas services to our Communities in 2019.





# Santa comes to town

## ■ 2018 RAVENSTHORPE COMMUNITY CHRISTMAS TREE

MORE than 200 excited children and parents flocked to Jubilee Park for the annual Ravenshorpe Community Christmas Tree on Saturday December 8th.

As always, Don and Lola Lansdown greeted all the families on arrival with free juice boxes and chips for all the kids, donated by Ravenshorpe Palace Hotel.

Amy Serbert, face painting extraordinaire, worked her magic with an array of Christmas and crowd-pleasing designs. The months of practice on her own children certainly showed through, thank you Alexis and Sofia for being the guinea pigs!

Greg Gould, Kelly Power and the Committee cooked up a storm while Kylie Thomas, Mitchell Gould and Bell



McHarg from Ravenshorpe Youth Club and Playgroup ran the bar.

Santa and his elves, Vicki Barber and Janie Drayton, ar-

rived in style at 6.30pm on a gleaming fire engine (thanks Mick Lloyd), complete with sirens and lights blaring with our trusty team of volunteer fire-

fighters.

They were welcomed by Ravenshorpe's favourite MC, Coralie Daw, who then impressed young and old with her



## CHRISTMAS TRADING HOURS

The Shire office will be closed from  
3pm Friday 21st December 2018  
and will re-open  
9am Wednesday 2nd January 2019.

This office will be closed on all public holidays.

Ian Fitzgerald  
Chief Executive Officer  
5th December 2018





# Santa comes to town

endless energy and enthusiasm as she assisted Santa in handing out gifts to the 117 children present on the night.

Santa then stayed on to take photos with all the families while the winners of the RPA Christmas Lights Competition were announced—congratulations to Rachel Pages and Yummylicious Candy Shack—see the article for more.

Thanks to Graeme Sutherland and the Shire of Ravensthorpe for ensuring the park was gleaming and that we had access to power and extra bins (and that the sprinklers didn't bring the party to an end at 9pm). The park was stunningly decorated under the gifted eyes of Portia Chambers and Sophie Leake and thanks to many helping hands on the night there was little to clean up the following day and not a bit of rubbish in sight.

The Committee would like



to thank the generous sponsors—Shire of Ravensthorpe, Ravensthorpe Bulk Haulage, FE Daw & Sons Foodworks, Ravensthorpe CRC and Meridian Agencies – for their continued

support of this event. Special thanks to Anthea Francis for again supplying the Christmas-cracker jokes every day in the lead up to the event.

Finally, thank you to Ravens-

thorpe Community Christmas Tree—Jules Belli, Kelly Power, Sophie Leake, Leigha Mealey, Portia Chambers and Gabrielle Major - for all their hard work in the lead up and on the night.





## Sparrkleaning Services

**Your local cleaning service would like to wish all their clients a very Merry Christmas**



If you require any cleaning don't hesitate to call on  
**0407 820 903**  
Police Clearance & ABN



# Letter from the Management Committee of the Community Spirit

Greetings,

I would firstly like to sing praise to all the Contractors who have worked hard throughout the year to produce a Community Newspaper that we can all be proud of:

Kylie Thomas—Coordinator.

Toni Crane—Designer.

Tony Keen—Proof Reader.

Sandi Hunt—Accounts.

As you can appreciate, to produce a newspaper requires an enormous amount of team work, expertise, creativity and collegial support. Throughout the year all the Contractors have honoured their contracts and shown commitment.

This solidarity has produced a quality newspaper for the community to enjoy.

Secondly, thank you to all the Committee members who so generously volunteer their time, knowledge, expertise, leadership and management skills to maintain efficiency and productive input so as to keep the paper running smoothly.

During the recent Annual General Meeting the following members were elected to the Executive Committee:

Judy Harp – Chairperson.

Corina Harp – Vice Chairperson.

Jeanette Denham – Secretary.

Dianne Burton – Treasurer.

The Committee members are Julia Bell and Elizabeth Utting. Thank you to Sophie Leake and Eimear Guidera for their members support throughout the year. With sincere gratitude and heartfelt well wishes we thank Sue Horsington for all her hard work, commitment and generosity in giving so much of her time over many years. Your valuable knowledge has been an asset in keeping the paper moving onwards and upwards. Wishing you Sue, and your beloved family the best of all things possible for your new life.

Thank you to Madeleine Norman, Chenda Goldfinch and Ron Richards for attending the AGM, for your advice, support and constructive ideas for the future of the paper.

The Management Committee is extremely grateful for the distribution groups:

Hopetoun Progress; Jerdacuttup P&C; Lake King P&C; Ravensthorpe P&C; Munglinup Pony Club; Newdegate Community Resource Centre.

Thank you for all your prompt deliveries. Further to this, thank you to all the various outlets in the community who sell the paper.

Thank you to all the individuals and groups who voluntarily submit articles and photos to Kylie Thomas each fortnight for inclusion in the paper. Your time and effort is greatly appreciated and valued.

2019 will see exciting changes for the Community Spirit. The paper will be accessible online, however there will be printed copies for individuals via subscription.

In 2017 Khiara Daw was the finalist for the position of “Freelance Journalist”. Khiara’s skills and enthusiasm contributed many interesting, relevant articles throughout early 2018. This sponsorship will be revisited in 2019.

As 2018 closes her curtains on yet another adventurous journey around the sun and we reflect and contemplate on the events throughout the year, the triumphs, joys, achievements, challenges, sadness and tragedies, may we as a Community feel grateful and blessed.

May we uphold in our actions the words from Jane Goodall, Scientist and Environmentalist.

“The greatest danger to our future is apathy. Every individual matters. Every individual has a role to play. Every individual makes a difference”.

This festive season may we celebrate and renew our tapestry of respect, tolerance, empathy, compassion, kindness, anti-discrimination and non-violent principles for all sentient and non-sentient nature. This will bind us and keep us strong.

The Community Spirit Committee would like to wish you all and your loved ones, a safe, joyous and healthy Christmas in the company of family and friends. May your festive season be healthy and moderate. May you all flourish and embrace “well-being” as you journey into 2019.

We look forward to your continued support of the paper in 2019.

—JULIA BELL.

Chairperson, Community Spirit 2018.



# Lighting up for Christmas

## ■ 2018 RPA CHRISTMAS LIGHTS COMPETITION

CONGRATULATIONS to the Pages Family and Yummylicious Candy Shack, winners of the 2018 RPA Christmas Lights Competition.

This year there were two \$500 cash prizes—one for each category, residential and commercial—thanks to generous sponsorship from Kerry and Ian Dickinson, Shire of Ravensthorpe and Ravensthorpe Progress Association.

In the residential category, highly commended went to Denise Edwards, Steve Power and Sue Gordon while the Pages Family took out top prize for the second year running. An “outstanding winner” according to the judges “This lighting display not only dazzles but creates a storybook picture for passers-by to linger and take in. The old house near the road has also been included adding a lovely, welcoming entry to town”.

Yummylicious was a “razzle dazzle winner” in the commercial category. Highly commended going to Ravensthorpe Mechanical “well done to Delvene, Bob and Tom for their kangaroo topped tyre tree and window lights”.

A special mention to Ravensthorpe Youth Club for their window display in the main street. It is great to see our young ones embracing the spirit of Christmas.

Thank you from the judges and Ravensthorpe Progress Association to all those who took the time to light up Ravensthorpe streets for a warmer, friendlier town. Sometimes these lights are just the spark needed for others to feel the spirit of Christmas.



*Have a Merry Christmas!*

THE CRC WILL BE CLOSING DECEMBER 24TH -JANUARY 4TH

# Keeping a record of our history

SINCE the inception of the Community Spirit paper over 28 years ago, Moonika McHayle and Pam Cousins have been diligently saving a copy of the paper each fortnight along with extra copies.

Men in Sheds and Hopetoun Progress Association have

also been carrying on this tradition. These were stored in a cupboard in the little room at the toilet area of the old hall. When the old Hall was demolished a new home was needed for the cupboard and papers. Some collating and filing was done then and culling.

Sad to say no one wanted to store this history, so for the last couple of years they have been stored at Anthony Aulds farm by Kate Paini.

Now, due to Viv Tancred's persuasion, the papers have a new resting place with the Shire of Ravensthorpe. Archive boxes for the papers have been supplied and delivered, with the papers to be stored in a cupboard in the new Hall.

Viv is re-sorting through the papers to file one copy of each edition—there are numerous double ups so if anyone would like these please get in touch with Pam or Viv.

Viv reckons they will be in their new home by Christmastime.

Thankyou to all concerned. We hope we will still be able to get a printed edition in the future for further reference.

—Pam Cousins.

## A Santa story

A few months ago I came to live in a town for the first time. I have always lived on a farm out the bush.

Naturally it is a bit different, but ok.

Then on the night of December 4th—a special surprise.

Santa and all his helpers, with lots of flashing coloured lights and beaut Xmas music, came down my street.

They even had time to stop for Xmas greetings and hugs. Merry Xmas to you all, you made an old man feel very special.

Now I know how little kids feel on such occasions.

—Buddy from Hopetoun.

Ps. Thanks for the lols.



**EDITOR'S NOTE:** The Community Spirit committee keeps 4 copies of each edition at Community Spirit Headquarters. Also a digital copy of each Community Spirit is sent to the National Library in Perth each fortnight.

Anyone who would like to still receive a printed version of the Community Spirit can do so by subscription. Please contact the Ravensthorpe CRC for further information.

## LETTER TO THE EDITOR



## Congratulations to the Spirit team

CONGRATULATIONS to ALL the Community Spirit Team for presenting their community with an excellent local paper – through thick and thin. It has not been an easy road for a very small committee to steer the production of the paper through some rough patches and worrying times. I really commend them for sticking with it and for the professionalism with which they have addressed the situation.

There are changes afoot, changes that have been brought about by an untenable financial progression and which will ensure the ongoing production of a paper – the alternative was closure. So in whatever form we, the community, wish to receive the paper in the future, it WILL exist, and it will continue to bring us local news, the calendar of events, interesting articles and offer a valuable advertising opportunity.

The 'New Age' members of the community can happily sit in front of their computer screens and have the paper delivered to them in their homes. The stalwart non-computer people will still be able to buy printed copies, printed locally and easily obtainable. And our Community Spirit will go on.

Thank you, Spirit Team for all you have done and all best wishes for the transition into the future.

—Chenda Goldfinch



*Located at the roundabout, Hopetoun*

**OPEN 7 days, 5AM-7PM**

*Cooked chooks, Homemade meals,  
Thai Menu specials, Burgers, fish and chips,  
homemade pies, pasties and sausage rolls,  
fresh salads, cakes and desserts.*

Phone orders welcome: **0498530183**

*We will be closed Christmas day*

*Wishing you a very merry holiday!*





# *Oh What A Night!*

## **When Santa and his Six White Boomers come to town**

SIX White Boomers, Santa and a whole lot of excited kids makes for an exciting night for young and old. Ravensthorpe and Hopetoun residents gathered on the streets, dressed for the occasion, and onesie pyjamas and a Santa hat were a big hit this year. Santa loves his job of making children feel special no matter what age.

This year marks the 11th year for the event and of course with a celebrity like Santa it takes a whole lot of background work to make the event happen.

Santa and Mrs Christmas would like to thank all of those people who give time, goods, services and love to Santa and his Six White Boomers—without your silent and generous support this could not happen

■ **More page 10**



## **MURRAY, CORALIE AND STAFF AT RAVENSTHORPE CELLARS**

**thank their customers  
for their continued support.**

**With special wishes for a wonderful  
Christmas and a happy and  
successful 2019!**



# Oh What A Night! When Santa



**IT'S thirsty work** - Bryn Edwards grew up having Santa come past his house he is returning a gift.

**RIGHT: Its a pyjama party**—Sarah Corfield, Kim Wilson & son Ryker.

**BELOW RIGHT: The Balasubramanian Family**—New to Hopetoun.

## ■ From page 9

and that is why you should shop local.

The Art of Giving is a special gift and the following people have it.

Robert & Terri Pens for the loan of the truck to transport Santa making sure it is all spick 'n' span for the event and supplying accommodation for the Boomers during their time here.

IGA Hopetoun and the Stephens family who have always been a great support and for the last few years have donated lollies funded from the community fund from when you buy a plastic bag.

What a great initiative that is and such a generous gift. That's why you should shop local.

Hopetoun and Ravensthorpe Police and their families past and present for their time and efforts in supporting Santa and in particular Sgt Dave Murphy, IOC in Hopetoun, who was on the inaugural run and along with former police officers helped build the sleigh. You can see their names on the Boomers: Spud, Webby, Tracy, Brownie, Townsend and Spicer leads the pack. Love



KY 2A

HOPETOUN BEACH PARTY 2018

# BLUES BY THE BEACH

Murder Mouse Blues Band  
Lightnin Jack  
Franzone

Free Entry | 5pm-Late | Port Hotel  
Thursday December 27th



# and his Six White Boomers come to town

it when they rev up the crowds with the sirens.

Wavecrest volunteers who diligently weigh and bag sometimes up to 80 kg of lollies every year.

A special thank you to Santa's chauffeur Murray Cockram and Robyn Cockram who have supported for many years.

There must have been hundreds of volunteer elves who hand out the lollies and spread the Christmas joy and there are too many to name here however Sue Spicer, Roz and Bernie Bidulph, Sue and Colin Townsend and Carol Taylor deserve hugs and special thanks.

Brian Grant—we couldn't do it without the very enthusiastic sound and music man.

Remember Santa loves you all

—Signed Mrs Christmas



**JOVANOVIC family—New to Hopetoun**



**STEVIE and Amy Smart—Santa's helpers.**

**SANTA thanks Robert & Terri Pens**

## *Merry Christmas and a Happy New Year!*

We hope everyone stays safe and enjoys this special time of the year with their loved ones.

The shire would like to thank you for your continued support through out this year. We are all excited to see what 2019 brings our amazing community.

From Councillors and staff at the Shire of Ravensthorpe.



# Jerdacuttup School wraps up

## ■ JERDACUTTUP PRIMARY SCHOOL

ON Thursday December 6th, St Nicholas day, students, staff, parents and friends from Jerdacuttup Primary School celebrated the end of the school year.

The small, but very select audience was treated to a range of entertainment, from dance to poetry reading, based on this semester's oceanic theme. The students had worked hard to polish their performances, yet still managed to convey the fun they were having.

Will Saunders opened the program with a solo recital of Captain Kidd, a poem written by Douglas Florian. The pre-primary students then joined the show reciting Me, Pirate by the same poet. Their rendition was so brilliant they were requested an encore.

Older students followed with the performance of a self-written play based on The Three Little Pigs and titled The Three Clownfish. Happily the conflict between the clownfish and sharks was resolved without any gratuitous violence or loss

of life. The audience were treated to a well-constructed story delivered by a confident and accomplished group of actors able to project their voices to the hardest of hearing at the back of the hall.

Year three and four students delivered narratives they had both written and illustrated with the aid of technology, projecting the images onto a big screen for all to appreciate.

The dance performance, choreographed by all students in kindergarten to year four (under the creative directorship of Sharee Saunders) was motivated by the story Tickly Octopus by Ruth Galloway and set to instrumental music composed by Martin Garrix and played by Piano Dreamers. This is titled 'Ocean'. The dance was a culmination of the year-long dance program students have enjoyed this year and in keeping with the overall theme of 'The Ocean'.

Principal Kier Douthie reflected on the year that was, the goals achieved, and the new ones to look forward to. P&C vice-president Suzanne Hill outlined the organisation's activities and thanked the

staff and parents for their support.

To conclude the concert, awards were presented to students as follows:

Senior Academic award, Sadie Morison, sponsored by Phillips River Lodge

Junior Academic Award, William Saunders, sponsored by ICPA Esperance

Virtues award, Claire Saunders, sponsored by Hopetoun CWA

The Arts award Taylor Compagnoni, sponsored by Peter Rundle, MLA for Roe

Attendance award, Dakota Compagnoni, with 98.7%, sponsored by Darren West, MLC for Agricultural Region

Winner of the Campbell Shield for gaining the most individual points at the inter-school's athletics carnival were William Saunders and Sadie Morison

The concert finished with a beautiful spread of delectables, generously provided by school parents, following which, everyone went home .....in the rain!

JPS wishes everyone all the best for the festive season, a speedy conclusion to harvest, safe holidays and looks forward to doing it all again next year!

—Jerdacuttup School Staff



## SHIRE OF RAVENSTHORPE

# Ravensthorpe and Hopetoun Waste Disposal Site Opening Hours

Please note that the opening hours for both the Ravensthorpe and Hopetoun waste disposal sites have been amended slightly for the Christmas holiday period and are now as follows:

### RAVENSTHORPE

|                               |                |
|-------------------------------|----------------|
| Monday 24th December .....    | 8am to 11am    |
| Tuesday 25th December .....   | CLOSED         |
| Wednesday 26th December ..... | CLOSED         |
| Thursday 27th December .....  | 9am to 12 noon |
| Friday 28th December .....    | CLOSED         |
| Saturday 29th December .....  | 9am to 12 noon |
| Sunday 30th December .....    | 1pm to 4pm     |
| Monday 31st December .....    | 8am to 11am    |
| Tuesday 1st January .....     | CLOSED         |

CEO Ian Fitzgerald

### HOPETOUN

|                               |                |
|-------------------------------|----------------|
| Monday 24th December .....    | 1pm to 4pm     |
| Tuesday 25th December .....   | CLOSED         |
| Wednesday 26th December ..... | CLOSED         |
| Thursday 27th December .....  | 1pm to 4pm     |
| Friday 28th December .....    | 9am to 12 noon |
| Saturday 29th December .....  | 9am to 12 noon |
| Sunday 30th December .....    | 8am to 11am    |
| Monday 31st December .....    | 1pm to 4pm     |
| Tuesday 1st January .....     | CLOSED         |





*To all our friends and customers,  
Thank you for your  
support through 2018*



**Wishing you all a happy, healthy and prosperous 2019**

Russell, Astrid and Staff

**HOPETOUN IGA**

**HOPETOUN GENERAL STORE**



# Vibrant Marine Debris Art



## ■ RAVENSTHORPE REGIONAL ARTS COUNCIL

ON November 30th the Ravensthorpe Regional Art Council celebrated the success of its "Art for Waste Awareness" project with an Exhibition Opening to showcase the impressive Marine Debris Art Installation on display at the Hopetoun Community Centre.

Community members and special guests were invited to view the amazing weavings, sculptures and collages and enjoy a social evening catching up with friends over drinks, live music and grazing tables.

All who attended the event were blown away at the creativity and imagination that went into the Exhibition and were amazed that the art on display was produced from the hundreds of kilograms of plastic, rope, ghost net and other debris found on local beaches by workshop participants.

One of our special guests for the evening, Marcus Gleiser, Chairman of the Waste Authority, spoke to the community about innovative recycling

initiatives being rolled out in Western Australia and encouraged the community to "Own their Impact" by choosing more sustainable options.

Marcus congratulated the Ravensthorpe Regional Arts Council and all those involved in the project on working so hard to raise awareness of the issues with single use plastics and on the success of the "Art for Waste Awareness" project so far.

Winners of our Marine Debris Sculpture Competition were announced, and Marcus presented the recipients with their "ecofriendly" prize packs.

Our competition was judged by acclaimed Sculpture Artist Kerrie Argent who travelled from Lake Grace to Hopetoun to judge the art and enjoy lunch by the sea. Kerrie works with recycled materials and is a regular exhibitor at "Sculptures by the Sea", she was the perfect person to judge our competition.

Kerrie was very impressed with the high quality of the art on display and commented that it rivalled any Marine Debris Competition she had seen in



## SHIRE OF RAVENSTHORPE

### Administration - Records Officer

An excellent opportunity to work with a small team of dedicated Local Government staff will be available from January 2019.

The Shire of Ravensthorpe seeks an appropriately skilled, motivated and confident person to join our administration team. The Shire of Ravensthorpe has a diverse background in farming, mining and tourism and enjoys spectacular scenery along the coast and throughout the Fitzgerald River National Park and Ravensthorpe Ranges.

This position will be responsible for a range of administrative roles including records keeping/management, front office customer service, providing support to senior staff and general administration duties. The position is offered as a full time position subject to satisfactorily completing a probation period. The successful applicant will be rewarded with an attractive remuneration package based on skills and experience including an hourly rate of between \$26 - \$28, generous superannuation co-contribution scheme, and a housing allowance.

A position description and further information can be obtained from Helen Coleman on 08 9839 0000 or email [secretary@ravensthorpe.wa.gov.au](mailto:secretary@ravensthorpe.wa.gov.au).

To apply, please email your resume and a covering letter addressing the selection criteria and providing two recent referees to [secretary@ravensthorpe.wa.gov.au](mailto:secretary@ravensthorpe.wa.gov.au) by 4.00pm Friday 4th January 2019.

Ian Fitzgerald

Chief Executive Officer

Shire of Ravensthorpe

P O Box 43

Ravensthorpe WA 6346





# shines a light on pollution

large metropolitan areas.

Sculptures were judged on creativity, best use of Marine Debris and the message of the art work in relation to plastic pollution in our oceans.

All competition entries can be viewed at the Exhibition from now until January 8th. If you have friends and family visiting the area over the next few weeks, please call into the Hopetoun Community Centre during opening hours to show them how talented our community is and to contribute some "decorative" beach waste to our Interactive Marine Debris Christmas Tree! Yes, thongs are a welcome addition!!

We would like to take this opportunity to thank the Waste Authority of WA for funding this project and RRAC would also like to acknowledge the Shire of Ravensthorpe and Ravensthorpe Hopetoun Futures Fund for supporting the "Art for Waste Awareness" project.

We would also like to thank the numerous community members and the Windspray Arts team who assisted the Ravens-



thorpe Regional Arts Council to install the exhibition, your help was greatly appreciated.

We would also like to thank our local Men in Sheds members who did a beautiful job of constructing white washed plinths out of recycled pallets for our Sculptures to be displayed on, Men in Sheds are always happy to help with community projects and we are grateful for their contribution to our exhibition.

The "Art for Waste Aware-

ness" project has had many positive impacts in our community, our beaches are now cleaner, we have educated locals on the importance of responsible recycling and we have brought people together to learn new skills and meet new faces.

If you are inspired by our

project and happen to be out and about beachcombing this summer, please pick up any Marine Debris you come across and take it home to use in your next creative project or throw it in the nearest bin!

— Jackie Edwards  
Project Officer



## Seasons Greetings

### Ravensthorpe Mechanical Services

Sincerely thank you for your business in the past year and look forward to seeing you in 2019

We will be closed December 25-26, 2018 and January 1-2, 2019



Lot 203 Morgans St, Ravensthorpe  
Bob, Delvene & Tom  
Ph. 9838 1146 Fax. 9838 1260  
Email. [ravmechservice@bigpond.com](mailto:ravmechservice@bigpond.com)



**SHIRE OF RAVENSTHORPE**

## **AIRPORT REPORTING OFFICER/SHIRE RANGER**

Due to the current employee moving on for personal study purposes we are seeking to recruit an Airport Reporting Officer/Shire Ranger.

If this type of role appeals to you we would love to hear from you.

This position will provide airport services for our scheduled 3 flights per week and also involve airport ground and building maintenance as required. In addition, some hours per week will be allocated to providing ranger services across the shire in support of our existing fulltime ranger.

This will be a diversified and interesting role that will report direct to the Chief Executive Officer in the first instance. We are seeking a person, who has current airport reporting officer qualifications with previous experience as a ranger desirable,

An attractive salary package including cash, superannuation of up to 14.5%, rental subsidy and restricted private use of a Council vehicle will be provided. An initial hourly rate of between \$29-\$32 will be negotiated with the successful applicant as will other benefits depending on experience and qualifications. It is expected the new person will commence in late January 2019 which should allow for a short handover from the current officer.

A position description can be obtained by contacting Helen Coleman on 98390 000 or email [secretary@ravensthorpe.wa.gov.au](mailto:secretary@ravensthorpe.wa.gov.au) Further information about the position can be obtained by calling Ian Fitzgerald on 0427 381 098.

Applications close 4.00pm Friday 21st December 2018.

Ian Fitzgerald

Chief Executive Officer

Shire of Ravensthorpe

PO Box 43, RAVENSTHORPE WA 6346



**SHIRE OF RAVENSTHORPE**

## **Crew member (Parks & Gardens / Town Site Maintenance) RAVENSTHORPE & HOPETOUN**

An opportunity to work within a small team of dedicated Local Government parks and garden staff based in Ravensthorpe has arisen. As a crew member you will undertake typical parks and gardens and town site maintenance tasks in Ravensthorpe, Hopetoun and Munglinup.

Applicants should demonstrate:

- Experience in providing parks and gardens maintenance and works;
- Experience in minor equipment maintenance;
- Ability to work in a team environment;
- Good written and interpersonal communications skills, and
- Willingness to work to occupational safety and health standards.

Knowledge and experience in Local Government would be advantageous.

- Hourly rate of between \$27 and \$29 plus allowances.
- Housing subsidy available.
- Superannuation and other benefits apply.
- Monthly rostered day off.

A position description and further information can be obtained from the Shire office on 9839 0000.

Applications close with the undersigned on 21st December 2018. Emailed applications will be accepted. Please email applications to [secretary@ravensthorpe.wa.gov.au](mailto:secretary@ravensthorpe.wa.gov.au) or post to PO Box 43 Ravensthorpe WA 6346.

Ian Fitzgerald, Chief Executive Officer, Shire of Ravensthorpe



# Farewells to John and Elaine

AFTER three farewells in three days running, John and Elaine Archer would be forgiven for thinking we want to get rid of them. Most certainly not. John was born here, has lived here all his life and Elaine since they were married.

All good things come to an end and they feel it is time to move on. They have sold their farm and chosen to retire to Marbellup, near Albany, in the New Year.

Elaine has been a member of The Uniting Church Guild for 55 years. To celebrate, fellow members gathered with her on Friday November 30th for a celebratory lunch at The Roast and Grill to present her with a voucher for a plant. This she will put in her new garden as a reminder of the Guild friends at Ravensthorpe. Members signed a well wishing card.

Where would the Ravens-thorpe Historical Society be without John and Elaine? They are about to find out. Over two decades of staunch membership at the museum they have made a great contribution to its growth and development. An afternoon tea on Saturday recognised a farewell last meeting, when they were presented with a photograph on canvas of Catlin Creek taken by Alan Carmichael and a card for all present to sign. Due to family commitments at this time of the year



**AT the Museum afternoon tea—(back) Ian and Kerry Dickinson, Derek Williams, John Archer, Rob Lloyde, Enid Tink (mostly concealed), Jenny Lloyde, Chenda Goldfinch, Elaine Archer, Ann Williams, Brenda Tink, Brenda Caelli. Photo by Dan Caelli.**

many apologies were tendered.

The last occasion was marked by a service at St Andrews Anglican Church on the Sunday followed by a delectable lunch, catered for by Sue Lee and Theresa Francis, for those present, held in the Rectory. The Rectory walls were laden with collages of happenings at the Church during John's lifetime and several photograph albums were passed around for everyone to reminisce. Lyn Hosking compiled a history of events connected to the Church, not least of all Ravensthorpe Wool Day which was established at Archer's farm and held for several years before moving into town. John and Elaine were presented with a hard copy of "Reflections" 2017 Ravensthor-

pe Floods which once again everyone signed. In his reply John had an intriguing tale to tell of how at the age of three his father gave him the plate at church service and instructed him to take the collection!

It is sad that this couple have

chosen to leave the area but we are sure they will enjoy their new pastures. John and Elaine have made outstanding contributions to the district over the years, not only to the aforementioned groups.

—AW



**LUNCH at St Andrews Rectory (l-r) Bill Pike, Harold Lee, Elaine and John Archer, Lyn Hosking, Chris and Diane Broun, Coralie Thomas, Annarine Chapman, Kevin Hosking, Ann and Derek Williams, Dick Kuiper.**

Photo by Janet Kuiper.

**SUMMER**  
**Pop-Up Shop**  
**19 Veal St, Hopetoun**  
**Next to the Chemist and Cafe**  
**5 December - 31 January**  
**Open Daily 9.30 - 4.30 Sundays 10-2**  
Closed Christmas Day, Boxing Day, New Years Day  
Giftware, Homeware, Clothing, Jewellery,  
Signs, Garden Statues, Wall Carvings  
Check Jewelpani out on Facebook and Instagram  
Main Showroom - Chester Pass Mill, Albany  
For more information contact Kristy 0417 986 653  
*Jewelpani*



# Priority survey

Southern Biosecurity Group are seeking your input into the priority activities for the 2019/20 financial year. In 2018/19 we're working on the following:

- Wild dog control
- Foxes
- Rabbit control
- Building skills and knowledge

## What is biosecurity?

Biosecurity means protection from the adverse effect an organism has or may have on:

- another organism
- a human being
- the environment, or part of the environment
- agricultural activities, fishing activities, or related commercial activities.

Under the Biosecurity and Agriculture Management Act, landholders are required to control declared pests on their property. However, effective control of well established and highly mobile species is best conducted at a strategic level with strong partnership arrangements that support individual landholders. That's what Southern Biosecurity Group is here to do.

## What declared species should be a priority for Southern Biosecurity Group? Pick any 3.

- |                                                   |                                           |                                               |
|---------------------------------------------------|-------------------------------------------|-----------------------------------------------|
| <input type="checkbox"/> Wild dogs                | <input type="checkbox"/> Emu              | <input type="checkbox"/> Deer                 |
| <input type="checkbox"/> Starlings                | <input type="checkbox"/> House mouse      | <input type="checkbox"/> Lantana              |
| <input type="checkbox"/> Foxes                    | <input type="checkbox"/> Galah            | <input type="checkbox"/> Bridal creeper       |
| <input type="checkbox"/> Rabbits                  | <input type="checkbox"/> Skeleton Weed    | <input type="checkbox"/> Tambookie grass      |
| <input type="checkbox"/> Prickly Pear             | <input type="checkbox"/> Stemless thistle | <input type="checkbox"/> Star of Bethlehem    |
| <input type="checkbox"/> Apple of Sodom           | <input type="checkbox"/> Horehound        | <input type="checkbox"/> Briar                |
| <input type="checkbox"/> Cotton Bush              | <input type="checkbox"/> Saffron thistle  | <input type="checkbox"/> Phytophthora dieback |
| <input type="checkbox"/> Australian Plague Locust | <input type="checkbox"/> Feral camels     |                                               |

Any others? .....

Why have you selected these? .....

What skills, knowledge or resources would help you manage declared species on your property? .....

## How would you like us to keep you updated of our progress?

- |                                       |                                           |                                  |
|---------------------------------------|-------------------------------------------|----------------------------------|
| <input type="checkbox"/> Email        | <input type="checkbox"/> Community Spirit | <input type="checkbox"/> Letter  |
| <input type="checkbox"/> Social media | <input type="checkbox"/> Newsletter       | <input type="checkbox"/> Website |

## What size landholding do you have?

- |                                           |                                       |                                       |
|-------------------------------------------|---------------------------------------|---------------------------------------|
| <input type="checkbox"/> Town block       | <input type="checkbox"/> >500 – 1000  | <input type="checkbox"/> >5000 – 7500 |
| <input type="checkbox"/> 1 to 50 hectares | <input type="checkbox"/> >1000 – 2000 | <input type="checkbox"/> >7500 – 9000 |
| <input type="checkbox"/> >50 – 200        | <input type="checkbox"/> >2000 – 3500 | <input type="checkbox"/> >9000        |
| <input type="checkbox"/> >200 – 500       | <input type="checkbox"/> >3500 – 5000 |                                       |

## Would you like to sign up for the SBG quarterly newsletter?

- ☐ Yes  
☐ No

If yes, please add your email address: .....

Any other comments? .....

For more information contact:

Kylie Fletcher (Executive Officer) via email [sbg.execofficer@gmail.com](mailto:sbg.execofficer@gmail.com) or via phone 0484 932 447

Please return your survey to:

PO Box 292, Ravensthorpe

Or scan and email to [sbg.execofficer@gmail.com](mailto:sbg.execofficer@gmail.com) before 31st December

Alternatively, a link to complete this survey online can be found at: [www.southernbiosecuritygroup.org.au](http://www.southernbiosecuritygroup.org.au)



# Group proactive in biosecurity

## ■ SOUTHERN BIOSECURITY GROUP

IT'S been another busy year for Southern Biosecurity Group (SBG).

Our vision is to be proactive in encouraging all stakeholders to adopt sound biosecurity practices, for the purpose of minimising environmental, economic and social impacts of animal pests and weeds on agricultural industry, landscapes and biodiversity values in the Ravensthorpe Shire. All of our activities are focussed on achieving this vision.

This article provides a brief overview of some of the activities we've been involved in over the course of the year. More information can be found on our website [www.southernbiosecuritygroup.org.au](http://www.southernbiosecuritygroup.org.au).

### Declared pest rate:

This year marks the first time that the declared pest rate (DPR) has been levied in the Shire of Ravensthorpe. Under the Biosecurity Management Act (2007), Recognised Biosecurity Groups have been required to become self-sustaining. Financial support from the State Government must now to be obtained through implementing a declared pest rate.

Funds raised through the DPR and government co-contribution support the commercial, environmental and social values of the Ravensthorpe community. For more information on the declared pest rate visit [www.agric.wa.gov.au/bam/declared-pest-rates-0](http://www.agric.wa.gov.au/bam/declared-pest-rates-0).

### Wild Dog Control:

Wild dog control has continued to take place within the shire. For the last financial year, stock losses were estimated at 58 head. Fourteen dogs were trapped or shot in the 2017/18 financial year. Dogs that take a 1080 bait are not always located and are therefore difficult to accurately count.

### Survey:

We are seeking your input into Southern Biosecurity Group's priority activities for the 2019/20 financial year.

In 2018/19 we're working on the following:

- Wild dog control
- Foxes
- Rabbit control
- Building skills and knowledge

Here's your chance to have your say on where the declared pest rate is being spent. Visit our website to get the link to the survey or complete the copy in this edition of the Community Spirit before December 31st.

### Cactus control:

Through a State NRM funded project, we've been working to control Drooping Prickly Pear in the Oldfield River corridor.

The viability of cacti plants and seed is several years and this work will need to continue for the longer term to ensure that the Drooping Tree Pear is eradicated from the river system and is not allowed to move onto agricultural land and into the many parks and reserves within the shire. This project is funded from grants received and will not be included in the declared pest rate projects. A funding application was submitted to the Department of Primary Industries and Development which we should know the outcome of in the coming weeks.

You can help by reporting any sightings of cacti plants, so

that control measures can be undertaken. We wish to thank the Shire and Department of Biodiversity, Conservation and Attractions for their contribution to killing plants that have been identified outside of the river system. By all working together we can make a difference.

### Rabbits:

A licensed pest management technician has carried out one release of the rabbit virus (RHDV K5) in the shire. A follow up release will take place in March 2019. We encourage you to report hotspots of rabbit activity so that consideration maybe given to locations for the next virus release. Contact the SBG Executive Officer ([sbg.execofficer@gmail.com](mailto:sbg.execofficer@gmail.com)).

### State Barrier Fence:

During the holiday period many like to go camping. A reminder that it is illegal to travel the SBF without a permit. This can be a dangerous area as LMPT's may discharge firearms and baits are frequently dispersed in the area.

Repairs are currently being carried out along the State Barrier Fence to fix damage caused by the 2017 floods.

### Starlings:

Residents and travellers are urged to keep watch for unusual birds after detections of starlings along the State's south coast. The common starling is considered one of the world's worst bird pests. They feed on cultivated grain and horticultural crops, disperse weeds, foul wool and can displace native birds.

They form large flocks with a high level of noise, and in populated areas can be a serious nuisance and cause damage to buildings.

Early detection and control is critical to preventing an established population in Western Australia.

To report suspect sightings, call 9368 3080 or go to [mypest-guide.agric.wa.gov.au](http://mypest-guide.agric.wa.gov.au)

The Southern Biosecurity Group committee would like to wish everyone a safe and Merry Christmas as you meet with family and friends. If you have an interest in becoming involved with the management of the group, we would welcome new faces. Attendance at RAIN meetings will also keep you informed of the group's activities. Contact email [sbg.execofficer@gmail.com](mailto:sbg.execofficer@gmail.com) or visit our website [www.southernbiosecuritygroup.org.au](http://www.southernbiosecuritygroup.org.au) to find out more.

### Pests and Weeds

**Your environment — Your responsibility — Your legacy**

# CONCRETING MARK CAMERON CONTRACTING

**All aspects of concrete  
Supply and lay with onsite mixing in the  
areas of Hopetoun & Ravensthorpe.**

**Contact Mark 0429 653 031**

# Dear Santa...

Over the years, many letters have been sent to Santa by local children. Our own very special Santa has kept some of these from the years gone by and how our children have grown...



Emily Daw



## Merry Christmas



### HALLAMS CARTAGE CONTRACTORS

Specialising in:

- Water Cartage
- Grain Carting
- General freight
- Wool Cartage • Side tippers
- Gravel & Sand
- Roller Hire
- Low Loader Hire

Kevin

Ph: 0429 049 114

email:

hallamscartage1@bigpond.com

### HOPETOUN EARTHWORKS

EARTHWORKS  
TRENCHING



SITWORKS  
CLEARING  
SEPTIC

Ph: 9838 3336

Fax: 9838 3360 Mobile: 0427 383 336

Supply & Laying Ready Mixed Concrete

### BACKHOE AND BOBCAT HIRE

Now Have Available: • Black Mulch • Enviro Mulch  
• Pine Mulch • Red Garden Loam • Screened Sand  
• Fill Sand & Gravel • Firewood  
Lot 107 Camberwarra Drive, Crystal Park

### HOPETOUN SLASHING SERVICES

Blocks  
Fire Breaks, etc  
3xMachines  
Available

Kevin

Ph: 0429 049 114

email:

hallamscartage1@bigpond.com



Dear Santa,

I wish I had  
a xbox and some  
sissy stuff and some  
spy stuff and a tv  
and a Dinosaur  
reibat and a toy  
gun and I will  
give you some  
biss and some cars


Love  
Nathan



Dear Susan,

How are you? I would like a Nintendo, I would like Nintendo games like Star Wars. I would like a Xbox and I would a yo-yo. I will have some carrots for the ran Deas and a drink.

Love Hayden

A drawing of a red bag and a red object, possibly a toy or a piece of clothing, attached to the bottom of the letter.

**St John** 

Merry  
**CHRISTMAS**  
& HAPPY  
HOLIDAYS

To all our staff, volunteers and the community of Western Australia we wish you a safe and happy Christmas.

Please enjoy the holiday season and remember to take care of each other.

If you require the emergency services during the festive period don't forget to dial triple zero (000).

# Dear Santa...

Over the years, many letters have been sent to Santa by local children. Our own very special Santa has kept some of these from the years gone by and how our children have grown...



## SCHOOL COUNCIL VACANCY

### RAVENSTHORPE DISTRICT HIGH SCHOOL (RDHS)

**Do you have a passion for the provision of a strong education for our children?**

**Do you have a few hours to spare a couple of days each term?**

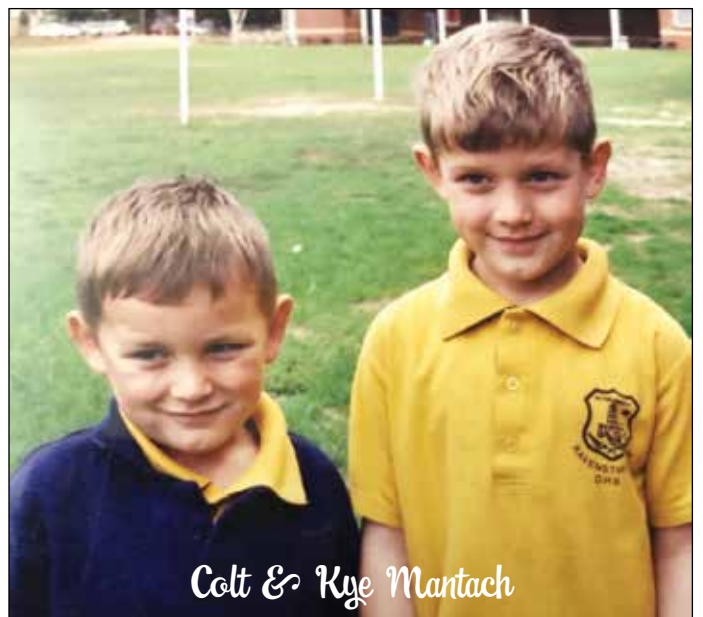
If so, would you like to join like-minded community members and teaching staff on the Ravensthorpe District High School Council?

We currently have a vacancy for a community representative on the Council and would welcome you joining us in 2019.

There are no special pre-requisites and we are not looking for you to become an office bearer. Just come along and join our committee/council to help us work with the teaching staff to provide the best we can for the children in our community.

If you would like more information or to have a general chat about what is involved, please give me a call or pop into the Shire office to see me. I can also provide you with a simple nomination form to complete your registration of interest.

—Ian Fitzgerald  
RDHS School Council Chairperson





# Dear Santa...

Over the years, many letters have been sent to Santa by local children. Our own very special Santa has kept some of these from the years gone by and how our children have grown...



## HOPETOUN TYRE SERVICE

Good Range Car 4x4 SUV Tyres  
• Truck & Tractor Tyres  
Century Batteries • Mobile Service

**We will be closed from  
Friday December 21, 2018  
till January 8, 2019**

We would like to wish everyone a happy and  
safe Christmas and New Year

Contact Mary or Stephen  
0407 313 062 or 9838 3156





|                                                                                                                                                                                                                                                                                                                                                                                                                                |                                                                                                                                                                                                                                                                                                                                                                                                                    |                                                                                                                                                                                                                                                                                                                                                                                           |                                                                                                                                                                                                                                                                                                                                                                                                    |
|--------------------------------------------------------------------------------------------------------------------------------------------------------------------------------------------------------------------------------------------------------------------------------------------------------------------------------------------------------------------------------------------------------------------------------|--------------------------------------------------------------------------------------------------------------------------------------------------------------------------------------------------------------------------------------------------------------------------------------------------------------------------------------------------------------------------------------------------------------------|-------------------------------------------------------------------------------------------------------------------------------------------------------------------------------------------------------------------------------------------------------------------------------------------------------------------------------------------------------------------------------------------|----------------------------------------------------------------------------------------------------------------------------------------------------------------------------------------------------------------------------------------------------------------------------------------------------------------------------------------------------------------------------------------------------|
| <p><b>HOPETOUN</b></p>  <p><b>FOR SALE</b></p> <p><b>5 FLINDERS ST \$380,000</b><br/>4 bed 1 bath home plus study, open plan kitchen/family. Separate lounge. Jarrah wooden floors through house. AC in lounge room. Double garage plus carport, enclosed yard, terraced back gardens. Large deck area to enjoy afternoon and morning sun.</p> | <p><b>HOPETOUN</b></p>  <p><b>FOR SALE</b></p> <p><b>20 CROYDON ST \$310,000</b><br/>Gorgeous 3x2, charming gardens, close to beach. Double side access, air con, ceiling fans, double garage, rainwater plumed to the house, large open plan kitchen, lounge plus living. Great enclosed patio with blinds. <b>MUST VIEW</b></p> | <p><b>HOPETOUN</b></p>  <p><b>FOR SALE</b></p> <p><b>27 RAGLAN ST \$360,000</b><br/>Amazing views from the top of town. 3 bed 2 bath home with living and separate dining area. Upstairs balcony with ocean views. Modern roomy kitchen, Parquet flooring, Alfresco area, double garage with power.</p> | <p><b>HOPETOUN</b></p>  <p><b>FOR SALE</b></p> <p><b>22 CULHAM ST \$360,000</b><br/>Modern design in Old Hopetoun. 4 bed 2 bath, single garage, open plan living and large kitchen. Great family home. Gazebo and entraining area. Fruit trees, easy care gardens. Just lock and leave. Walk to everywhere.</p> |
| <p><b>HOPETOUN</b></p>  <p><b>FOR SALE</b></p> <p><b>6 DAWN ST \$320,000</b><br/>This home has been extensively renovated throughout. 3 bed 2 bath home on 1012sqm block, new kitchen, living/lounge. Ocean views. Large shed, back lane access. Call to arrange a viewing.</p>                                                               | <p><b>HOPETOUN</b></p>  <p><b>FOR SALE</b></p> <p><b>17 MAXWELL WAY \$250,000</b><br/>Its a charmer with modern 3brm 1bath open plan living. Massive shed and good rear access. Walk to school and shops. Neat and easy care. Ideal first home or easy care holiday house. Suit tradie.</p>                                      | <p><b>HOPETOUN</b></p>  <p><b>FOR SALE</b></p> <p><b>CHALET 3 49C VEAL ST \$170,000</b><br/>Great investment or holiday home. 2 X 1 chalet unit within the Chalet Village. Great Returns. Furniture package included. Sleeps 5.</p>                                                                    | <p><b>HOPETOUN</b></p>  <p><b>FOR SALE</b></p> <p><b>13 CANNING BLVD \$345,000</b><br/>Coastal classic living 3x2, plus extra toilet, established gardens, walk to the shops, beach &amp; sporting club. Pool house, air con, ceiling fans, double garage, rain water. Appointment only.</p>                   |
| <p><b>HOPETOUN</b></p>  <p><b>FOR SALE</b></p> <p><b>270 BANKSIA RD \$449,000</b><br/>Absolutely nothing to do at this beautifully presented property. 4 bedroom 2 bathroom home, tiled throughout. Upstairs retreat, patio, under cover orchard. Garage and large shed and so much more.</p>                                                | <p><b>HOPETOUN</b></p>  <p><b>FOR SALE</b></p> <p><b>214 BANKSIA RD \$350,000</b><br/>Modern &amp; tidy 3x2 on 2.4 acres with huge shed (approx 150sqm). R/W tank 1000ltr, air con plus combustion fire. Attractive block, nice views. Call to view!</p>                                                                        | <p><b>HOPETOUN</b></p>  <p><b>FOR SALE</b></p> <p><b>5 ROSEA WAY \$380,000</b><br/>Modern 4x2 plus office &amp; theatre room, large living area on 2.6acre private block with large powered shed, verandas around whole house. Double carport. Good views. Tenanted</p>                               | <p><b>HOPETOUN</b></p>  <p><b>FOR SALE</b></p> <p><b>230 CAMBEWARRA \$260,000</b><br/>Large 5 bedroom home all with BIR &amp; 3 toilets, reverse cycle A/C, front &amp; back enclosed patios on 2.4 acres with extra large powered shed. R/W tank. Attractive block, with views of Mt Barren.</p>             |

## RAY WHITE RURAL (SOUTH COAST WA)

25 Veal Street Hopetoun

raywhiteruralsouthcoastwa.com.au

Ph: 08 9838 3100 • Residential Sales 0428 711 576 • Rural Sales 0429 299 797

*Merry Christmas and a Happy New Year  
from the Ray White Team*

Closed from Saturday 22 December 2018 until 10am  
Tuesday 2 December 2019





# Ray White®

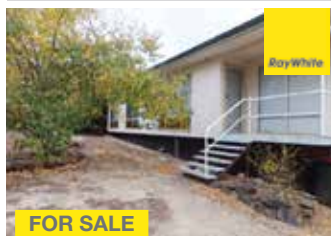
## RAVENSTHORPE



**FOR SALE**

**65A MARTIN ST \$168,000**  
Modern three bed two bath home on an easy care block—664sqm. Convenient location, walking distance to shops & school. No work to do. Call to view.  
**TENANTED**

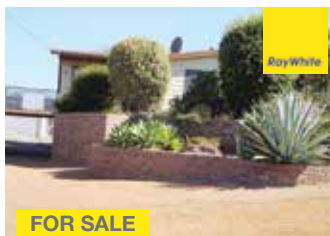
## RAVENSTHORPE



**FOR SALE**

**87 MARTIN ST \$159,000**  
Fully furnished family home on 1214sqm block. 4 bed 1 bath, kitchen and dining, lounge room. Verandah along back of house with views of ranges. Loads of space! Great Value.

## RAVENSTHORPE



**FOR SALE**

**48 DUNN ST E.O.INTEREST \$210,000**  
Spacious 4 bed 2 bath family home. Open plan, large kitchen & living areas. A/C plus wood fire. 1012sqm block, with good access & excellent Range views.  
**TENANTED**

## RAVENSTHORPE



**FOR SALE**

**55 DUNN ST \$210,000**  
Modern 3 bed plus study home with main bathroom, two showers, two toilets, large kitchen and living with air con. Big block, fenced yard area. Well maintained. Tenanted

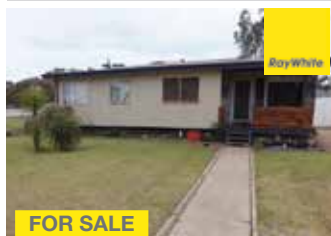
## RAVENSTHORPE



**FOR SALE**

**10 DAW ST \$165,000**  
1012sqm block with tidy well maintained 3 bed plus office home, large lounge with air con, Solar HWS, rainwater, garden shed and large powered shed. Good access.  
**TENANTED**

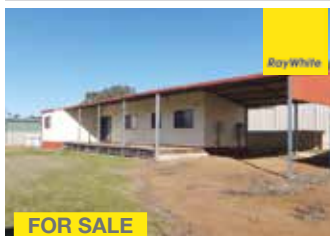
## RAVENSTHORPE



**FOR SALE**

**15 DAW ST \$175,000**  
Charming 4 bed 1 bath plus study home on 1012sqm block, large backyard, garden shed. Wood fire, jarrah floor boards throughout.  
**CURRENTLY TENANTED**

## RAVENSTHORPE



**FOR SALE**

**36A SPENCE ST \$160,000**  
New easy care 3 x 1 on low maintenance 607sqm block. Kitchen/dining with plenty of cupboard space & lounge with AC. Front verandah & carport. Back lane access.

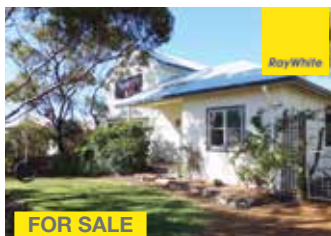
## RAVENSTHORPE



**FOR SALE**

**LOT 50 MIDDAMIDJUP ROAD West Fitzgerald \$85,000**  
456.04 hectare Bush block, never been cleared, environmental restrictions—rural conservation. Can clear 1 hectare for building envelope. Old caravan and water tank, plus a dam.

## HOPETOUN



**FOR SALE**

**40 DUNN ST \$260,000**  
Character and charm this contemporary home has much to offer. Renovated and extended home. 3 bed, 1 bath, jarrah floors, new kitchen, huge shed with power, good access, fire, a/c, gardens with many varieties of fruit trees, chook run, back lane access.

## HOPETOUN



**FOR SALE**

**LOT 4 NEWDEGATE/RAVENSTHORPE RD \$239,000**  
Approx 30ha 11km from Ravensthorpe. 1 x 1 homestead, large barn style shed with concrete floor and attached ablution block/laundry. Attractive, fully fenced small rural property. Panoramic views across the Ravensthorpe Ranges. Sit on the veranda and enjoy "Your Home on the Range"

## HOPETOUN



**FOR SALE**

**1418 STH COAST HWY \$165,000**  
Access from South Coast Hwy, approx 7km from Ravensthorpe. Range views. 8.1ha rural property with 2x2 house (partially constructed), solar power system, rainwater tanks, garden shed and chicken run. Ample building materials and a caravan to be included in the sale.

## HOPETOUN



**FOR SALE**

**901 STH COAST HWY \$145,000**  
Your own bit of paradise 2 ha block with rich fertile soils. Native bush and impressive stand of Salmon gums. Great views of the Ravensthorpe ranges, new fencing. Close enough to cycle to town, far enough to be private. Brand new shed 3 large rain water tanks.

## RAY WHITE RURAL (SOUTH COAST WA)

25 Veal Street Hopetoun

raywhiteruralsouthcoastwa.com.au

Ph: 08 9838 3100 • Residential Sales 0428 711 576 • Rural Sales 0429 299 797

*Merry Christmas and a Happy New Year  
from the Ray White Team*

Closed from Saturday 22 December 2018 until 10am  
Tuesday 2 December 2019

# Dance program



ABOVE: The Tiny Mob.

RIGHT: Ravensthorpe with Talitha.

BELOW RIGHT: Hopsy stomp.





**ALBANY**  
CITY TOWING SERVICES  
Paul Armstrong  
Proprietor  
Mobile 0418 936 010  
Tel: 9842 2838  
14 Prior Street Albany WA 6330  
paularmstrong@smashrepairer.com

*Paul Armstrong  
Panel Beaters*

**24 Hr Towing**



*Albany  
Smash  
Repairs*

All Makes & Models  
All Work Guaranteed



E-mail: paularmstrong@smashrepairer.com





# a huge success

## ■ RAVENSTHORPE REGIONAL ARTS COUNCIL

THE Ravensthorpe Regional Arts Council dance program will continue across the region during the first school semester of 2019. Stretching across five regional towns; Hopetoun, Ravensthorpe, Munglinup, Lake King and Jerramungup the RRAC Dance program provides opportunity for over 300 school children, adults and toddlers to participate in contemporary dance movement classes.

2019 will be the third year of the RRAC Dance program. Three professional dance artists from Perth, Melbourne and Brisbane have taught in the program to date, shaping the classes as they get to know our communities. While some contemporary dancers create characters, theatrical events or stories, others perform entirely new creations as they improvise in their own unique style.

Through this Ravensthorpe



JERRAMUNGUP.

Regional Arts Council project, local people participating in dance mentorships are working alongside the engaged professionals to attain skills that can be used in their own communities for many years to come. It is hoped that the project-model of the RRAC Dance program will have the ability to be used across many different art forms to bring opportunity to remote regions in a shared and

sustainable way.

Information on the Term 1 Dance classes can be found on the RRAC Dance Facebook page (like for updates and booking links as they are posted). Alternately email or phone Kirsty Duffy [rracordinator@westnet.com.au](mailto:rracordinator@westnet.com.au)

com.au 0438 945 405.

Merry Christmas and a safe and happy New Year from the RRAC Dance Team.

The Regional Arts Partnership Program is supported by the State Government of Western Australia and Country Arts WA.



HOPEY KICK.

## HOUSES/UNITS FOR LEASE

In these towns:-

- Katanning
- Gnowangerup
- Lake Grace
- Newdegate
- Lake King
- Varley
- Ravensthorpe
- Jerramungup
- Bremer Bay

**ENQUIRE TODAY**

(08) 9845 9697 or [admin@advancehousing.com.au](mailto:admin@advancehousing.com.au)



# Ravensthorpe Regional Arts Council



## ■ RAVENSTHORPE REGIONAL ARTS COUNCIL

2018 saw another diverse and creative mixed bag of events and projects.

The year of performance began with “Dating Naked” which tickled the fancy of over 18’s at Wavecrest Bar & Bistro. We witnessed the hilarity of “Fat Girls in Bike Shorts” in Hopetoun and celebrated an enormous amount of commu-

nity spirit with “A Boy Named Cash” in Ravensthorpe.

Gustav Hellberg returned to Hopetoun in 2018 to complete his work on the ‘Spaced 3’ project, forging lifelong friendships and catapulting the Ravensthorpe Regional Arts Council onto an international stage.

RRAC’s film itinerary included a movie showing of Gustav’s work, and two indie-film style movie nights.

This year RRAC proudly



**Why not join in a first aid course while participating in the Hopetoun Progress Association's Summer Festival activities?**

**St John Ambulance—Provide FIRST AID – 1 Day course**  
Unit HLTAID 003 Cost \$165

**Hopetoun Friday 25 January 2019**  
**8.30 – 4.30pm**

Pre learning is by online links.

An email address is required.

Please contact: Hopetoun Progress Association 08 9838 3363  
hprogress@westnet.com.au for enrolment forms

or Helen Laycock for details.

Email: ghlaycock@wn.com.au

PH: 0427 980 070



# —Something for Everyone

reached its 30th year as an incorporated body, partied like it was 1999 at the celebration and welcomed three new deserving life members—Fay Obrien, Jenny Chambers and Ainsley Foulds. It was a sparkling night to remember.

2018 was the second year of the RRAC Dance project which ran two 8-week residencies across 5 regional towns.

A very big highlight this year was the community eco-art project “Art for Waste Awareness”.

RRAC has worked to secure five grants in the last 12 months to benefit the community by increasing cohesion through culture and the arts.

This year Lotterywest played a big part in providing increased access to performance art in the region. Again in 2019, RRAC will provide a bus service thanks to Lotterywest, promoting greater involvement in regional performing arts events by removing accessibility barriers.

The 2019 program has something for everyone. Beginning in January you can expect comedy, drama, circus, shadow puppetry, giant puppetry, classical music, film and MORE.

‘Like’ the Ravensthorpe Re-



gional Arts Council Facebook page, subscribe to the ‘Rave About Arts Blog’ and stay tuned for the release of the full annual artistic program.

RRAC would like to take this opportunity to wish the community a very safe and happy Christmas and holiday period. Thank you to all of our partners, participants and audience members. We look forward to a huge 2019 calendar of events!



Department of Local Government, Sport and Cultural Industries  
Department of Primary Industries and Regional Development



COUNTRY ARTS WA



 **Compass** | conveyancing (wa)  
let our experience work for you

Choose a settlement agent who  
stands out from the crowd  
Support your local business &  
let our experience work for you!



Call Meredith on 9071 1655  
or email: [meredith@compasswa.com.au](mailto:meredith@compasswa.com.au)

Located at  
101 Dempster Street Esperance

# HOPETOUN *Police Station News*

## **Firearms:**

We are currently engaged in a statewide operation to enforce the regulations pertaining to firearms, particularly those license holders considered vulnerable such as primary producers and remote property owners. Throughout the Great Southern Region firearms are being stolen from rural properties in targeted burglaries. Subsequently these firearms are disappearing into the hands of those that would do us harm.

As primary first responders, Police face an increased danger of encountering offenders in possession of stolen firearms, the same can be said for the community at large, hence the reason for the current operation. We will be in contact with registered firearms license holders and conducting physical inspections of firearms, cabinets and storage facilities to ensure strict compliance with regulations and safety best practice. We will assist you with compliance wherever possible first, however charges may be preferred where warranted.

Complacency is your worst enemy, thinking that no-one would come out to a very remote rural property is wrong, in fact the isolated farm sheds, properties and vehicles are the most vulnerable. There have been incidences where firearms have been left unattended in an unlocked farm shed, not properly locked in a secure firearms cabinet and subsequently stolen. It's the remoteness and low possibility of detection that attracts offenders to these targets.

WA Police website provides a wealth of information on firearms and other matters – [www.police.wa.gov.au](http://www.police.wa.gov.au) then click on 'Online Services' and follow the links to firearms information, including an external firearms license status web form.

Many of you will travel away over the next several weeks after harvest. You may wish to get in contact with us and arrange a suitable time for an inspection before you leave. We ask that you get on the front foot and double check your firearms, cabinets, storage facilities and licenses as a priority in the lead up to our inspections—it's in everyone's best interest.

## **Road Safety – Road Policing:**

Aren't they the same thing? In many ways they are. We target those offences that are the major contributing factors in road fatalities such as Speed, Alcohol and Drugs, Mobile Phones, Seat-

belts, Fatigue, Inattention, Unroadworthy Vehicles and anything that poses a threat to road users. Road Policing encompasses those offences and also targets suspicious vehicle movements where conveyance of illicit substances, firearms, stolen property and other illegal activities such as stock theft may be involved.

We have seen a few incidents recently of burnouts, donuts on the groyne and property damage caused by unauthorised (No Valid Drivers License) drivers and those persons who are so blatantly stupid, ignorant and with callous disregard for anyone's safety. Vehicles have been seized and more will follow—we make no apologies for a zero tolerance to unsafe road user behaviour. We thank those community members who have come forward with photos and videos of these idiot drivers which enables us to get them off the road. The more we work together the safer we all are.

A point to consider here – 'We don't dob in our mates' – if that's your ethos then YOU are a part of the problem, potentially putting many other innocent people's lives at risk!

For now, stay safe.

—Dave Murphy  
Officer In Charge Hopetoun Police Station



# RAVENSTHORPE *Police Station News*

## **Crime:**

As part of the state-wide firearm cabinet inspections on vulnerable license holders in Regional WA, regrettably we inspected a home in Ravensthorpe to locate firearms mounted on a wall, one firearm missing, and no cabinet whatsoever. The license holder was charged, and we are seeking to cancel this person's licence and dispose of the firearms.

## **Court:**

A result from the Kalgoorlie Court on November 30th that is relevant to Ravensthorpe is the conviction of David Takotoroa HIRA, formally of Ravensthorpe, for an As-

sault Occasioning Bodily Harm offence that occurred against a female in Ravensthorpe in June. He was given a six-month prison sentence, suspended for nine months. Violence against women is a cowardly act, and police will hold perpetrators to account and support victims.

## **Road Policing:**

At the time of writing this article, we are continuing our alcohol and drug driver campaign. We have been conducting random drug and breath tests on drivers, and targeted patrols. The purpose is to help prevent road trauma in the lead-up to the Christmas break.

On December 5th, we apprehended a Ravensthorpe local for driving under the influence of meth and alcohol. This selfish behaviour puts the lives of the majority of innocent road users at risk.

## **Drugs:**

Quite simply, please tell us who is selling meth in our communities so we can deal with them. Call us, or ring or email Crime Stoppers 1800333000 [crime.stoppers@police.wa.gov.au](mailto:crime.stoppers@police.wa.gov.au) anonymously.

—Sergeant Jamie Paterson  
Officer in Charge, Ravensthorpe Police Station



# Volunteer remembered

ON Saturday November 24th, members of Hopetoun Marine Rescue and Hopetoun Men in Sheds joined Mrs Kerry Fricker and her family on the Hopetoun foreshore to dedicate a seat to Kerry's husband, Bruce, who passed away on December 30th, 2016. Hopetoun Men in Sheds kindly made the seat.

Bruce and his brother Johnny cleared a virgin block on Tamarine Rd, and Bruce farmed it with his brother for a while. Bruce and Kerry moved to Mandurah, later returning to Hopetoun. During this time he was a very active member of the Hopetoun Volunteer Marine Rescue. Bruce also enjoyed fishing at his favourite spot, which he called "Never Fails"

When Bruce's health started to fail, they moved back to Narembeen, coming back to Hopetoun when they could.

On Boxing Day 2017, the Marine rescue vessel, "Maryann" took Bruce's family out to his favourite fishing spot to scatter his ashes. The family donated some money to Hopetoun VMR for this. The committee decided to place a seat on the foreshore overlooking his favourite fishing spot.



THE Fricker family.

## MAXIMISING VALUE

- Wool Buying
- Auction Sale
- On farm Oddments
- Prompt Payment

Take advantage of significant savings by freighting your wool to WA's only regional, AWTA-accredited wool handling and testing facility at Katanning.

CONTACT **JUSTIN HAYDOCK** ON **0427 929 200**  
AND TAKE THE **WESTCOAST** ADVANTAGE



Be the **FIRST** to see our livestock listings direct to your email.

Go to **wcw.com.au** and subscribe NOW.

**WESTCOAST**  
WOOL & LIVESTOCK

[wcw.com.au](http://wcw.com.au)



Follow us on Twitter @WestcoastWandL



**rma network.**  
Independent Livestock & Property Agents

**AuctionsPlus**  
OFFERING QUALIFIED ASSESSORS

# Crazy Granny's turns one!

YOU are all invited to help us belatedly celebrate our 1st Birthday and Christmas on Thursday December 20th. This will be our last "late night shopping" opening for the year and will be open until 8pm.

Please do pop in any time during the day or evening to say hello and have some nibbles and a tippie. It is a belated birthday as Kerry and I, with Lola, were away on a patchwork and quilting trip we had planned in mid 2017 – before the shop!!

It was called a "Fall Colour Quilting Cruise". Starting in Montreal, Canada and ending in Miami, USA with a group of 30 Aussie ladies and a patchwork tutor. More of that later.

We saw many patchwork and quilting fabric shops and did buy some material, but also noted many different ideas that could be used in our shop. Some ideas for different products and other ideas for presentation. Over the next few months we hope to implement some of them and also, add to the range of products we have to offer. All the made items for sale in our shop will still be made by us on the premises but we hope to add a range of Australiana fabric to the Aboriginal one we currently carry.

Back to our trip.

We flew via Melbourne and LA, USA to Montreal, Canada, where we joined the other ladies (and 1 husband), most of whom were from the Eastern States. We spent 2 nights in Montreal and did some sight seeing before boarding the MS Veendam for the cruise down the St Lawrence River and out into the gulf. On the way we visited Quebec. The old centre was fascinating and it would have been lovely to spend more time exploring.

Charlottetown, on Prince Edward Island was our next port of call. Our first excursion was to the Anne of Green Gables museum. Lovely setting and an interesting house. This was followed by our first quilting shop! The following day we arrived in Sydney, Canada with more sightseeing and another quilt shop. Lovely big shop with all sorts of stuff. Some beautiful fabrics at 50% off. Bought some! We were all given a gift bag with all sorts of odds and ends. Lovely gesture. Our next port was Halifax, Nova Scotia. A bus tour then a walk to see the graves of casualties of the Titanic. Followed by another walk through the Victorian style gardens with commentary on what defined a Victorian garden. Interesting. Our last day in Canada ended with a visit to another quilting shop. Lovely.

Bar Harbor in Maine was our introduction to the USA. Several ships in so we had to catch a tender to go ashore. Interesting area with lots of islands. Bus tour through the Acadia National Park where the trees were changing colour to their autumn foliage. Many different colours. Also views of the Atlantic Ocean from various vantage points. Very pretty drive. Back into town where we were dropped at a little patchwork shop. Had a browse here before walking back into town and down to the harbour. Passed some interesting looking shops. Stopped and look through one filled with sun catchers. Amazing. Had to wait for a while to get a tender back to the ship. Sun going down as we left the harbour. Some lovely photos.

Boston was our next port of call and we found it disappointing. Weather was terrible and there were a lot of road works in the city area which made bus travel difficult. We went down the same streets several times. In the afternoon we travelled to a town called Lowell to visit a quilt museum. This was very disappointing as they advertise a large collection of antique quilts which we were very keen to see. There was one average size room dressed as a bedroom with 2 or 3 quilts spread out and a few more folded in drawers. Probably 10 quilts in all. The remainder of the display space was taken up with 2 other exhibitions of modern art quilts. Many of which were spectacular but not what we had come to see.

The next 2 days were spent at sea. In the mornings we worked on a hand piecing project with the others in our group and generally lazed around!

Our second last port of call was Port Canaveral. First stop being a quilting shop!! Some glorious fabrics and lots of ideas. On to visit a Queen Anne wooden frame house which is now a museum. Had time to spare so popped into another fabric shop. Some of our group had a chance to go to the space centre at Cape Canaveral. There was a rocket launch about midnight which was visible from the ship.

In Port Lauderdale, the following day we disembarked from the Veendam. First stop again, a quilting shop. This would have to be the biggest quilting fabric shop I have ever seen. Had over 16,000 bolts of fabric plus all the other stuff. Spent an hour or so here then on to Miami. Picked up a local guide who showed us the Art Deco influences and also through midtown to see the murals. They were impressive. And finally, to our hotel on Miami Beach.

We spent the next 2 days in Miami. The first day we went to Vizcaya, which is an ornate Italian Renaissance style villa surrounded by formal gardens on 3 sides and water on the fourth. Very ornate. The second day we had a trip out to the Everglades National Park and a ride on an air boat. Good fun. On the way back to the hotel from one of the outings we went to Walmart and bought extra suitcases!! About half of the tour group did this.

## B.D. COVENTRY & SONS

21 Richardson Street, (PO Box 67)  
KATANNING WA 6317



AUSTRALIAN  
FUNERAL  
DIRECTORS  
ASSOCIATION

Burial and Cremation Funeral Services professionally conducted with dignity, compassion and warmth in accordance with families' requests.

Please contact us to assist with Funeral Flowers, Bronze Plaques, Monumental (including additional inscriptions), Pre-paid and Pre-arranged Funeral Services.

For confidential and professional advice, please contact:

**Kerry Coventry**

**Telephone 9821 1079, Fax 9821 4179**

**email: coventry@comswest.net.au**



# Thank you Men in Sheds

LITTLE Barrens Early Learning Centre would like to say a huge thank you to Men in Sheds for donating a desk for Little Barrens children to use and the parents to admire. The children have loved writing their letters to Santa using it.

The desk was donated to Men in Sheds by Loyde Archer and lovingly restored by Bill Clark.

Pictured is Tyler Galwey, Mia Van Schayk, Hendrix Van Schayk and Macy Parker.

—Little Barrens



## Crazy Granny's turns one!

■ From page 32

Both afternoons were free time. The first afternoon I wandered along the board walk that was between our hotel and the beach. Lovely idea. It seemed to go a long way in each direction. Seats every so often and shade. Delightful.

Finally, the long trip home. From the time we left the hotel in Miami until we landed in Perth we had been travelling for 38 hours. Flew from Miami to Houston to Sydney and so to Perth. Drove home the next day.

—J Harp

## Hannaford

*Where the locals go*

**At Hannaford we pride ourselves on the expertise, experience and equipment of our locally based Seed Protection Specialists.**

A prime example are Peter & Karen Agars, our Hannaford specialists for Ravensthorpe, Lake King and Newdegate. Locally based and with access to specialist equipment and the largest range of seed treatments available, Peter & Karen are ready to respond to your seed grading and treatment needs.

Contact them today to plan your requirements and receive a **FREE** seed germination test!

**Peter & Karen Agars**  
[hannaford.ravensthorpe@gmail.com](mailto:hannaford.ravensthorpe@gmail.com)  
 0427 268 136

[WWW.HANNAFORDS.COM](http://WWW.HANNAFORDS.COM)

**FREE\* Seed Germination Test**  
\*Hannaford customers only

Proudly supporting local community via FRRR

Foundation for Rural & Regional Renewal

The Seed Protection Specialists

# ***We're going digital!***

## **A new business approach, to help keep your business advertises local**

For you the advertisers, this will include web links to your business pages, social media sites and instant links to phone numbers, online forms, surveys and other such information.

All you need to do is send us your Web & Facebook address and which phone numbers you would like linked to your ad.

If you send us your ad in PDF format, we can only link one of the 3 to your advert.

If you send your ad in word or we design your ad you can have all 3, at NO extra hidden costs, you only pay for your ad space.

## ***2019 Community Spirit Deadlines***

| <b>ISSUE NO.</b> | <b>DEADLINE</b>          | <b>ISSUE DATE</b>  |
|------------------|--------------------------|--------------------|
| 1                | February 7, 2019 .....   | February 14, 2019  |
| 2                | February 21, 2019 .....  | February 29, 2019  |
| 3                | March 7, 2019 .....      | March 14, 2019     |
| 4                | March 21, 2019 .....     | March 28, 2018     |
| 5                | April 4, 2019 .....      | April 11, 2019     |
| 6                | April 18, 2019 .....     | April 25, 2019     |
| 7                | May 2, 2019 .....        | May 9, 2019        |
| 8                | May 16, 2019 .....       | May 23, 2019       |
| 9                | May 30, 2019 .....       | June 6, 2019       |
| 10               | June 13, 2019 .....      | June 20, 2019      |
| 11               | June 27, 2019 .....      | July 4, 2019       |
| 12               | July 11, 2019 .....      | July 18, 2019      |
| 13               | July 25, 2019 .....      | August 1, 2019     |
| 14               | August 8, 2019 .....     | August 15, 2019    |
| 15               | August 22, 2019 .....    | August 29, 2019    |
| 16               | September 5, 2019 .....  | September 12, 2019 |
| 17               | September 19, 2019 ..... | September 26, 2019 |
| 18               | October 3, 2019 .....    | October 10, 2019   |
| 19               | October 17, 2019 .....   | October 24, 2019   |
| 20               | October 31, 2019 .....   | November 7, 2019   |
| 21               | November 14, 2019 .....  | November 21, 2019  |
| 22               | November 28, 2019 .....  | December 5, 2019   |
| 23               | December 12, 2019 .....  | December 19, 2019  |

***The Spirit is not only surviving, but thriving!***



# Think UV not heat this summer

IT'S not just the heat of the sun you need to be mindful of when outdoors. It's easy to remember to cover up when it's nice and hot outside, but when it comes to skin cancer, the real culprit is UV radiation.

And the sneaky thing about UV is that you can't see it, and you can't actually feel it either. By the time you realise what has happened, the damage is done.

You might be surprised to learn that UV levels can still be extreme whether the temperature is 20°C or 40°C. That's why it's easy to get caught out on cool or cloudy days.

UV levels vary throughout the day, month and season, and also change according to where you are in the country (north or south). And it's certainly not just summer that you need to look out.



Your sun protection should always be guided by the UV Index. Whenever the UV is forecast to reach 3 or above, be SunSmart in five ways to

reduce your risk of skin cancer. That means: Slip on a shirt, slop on sunscreen, slap on a hat, seek shade and slide on sunglasses. Make sure your hat has a broad brim and covers the back of your neck, ears,

and the sides of your face as well as the front. Caps and visors don't do the job!

For more information visit [MyUV.com.au](http://MyUV.com.au), and download the free SunSmart app while you're there.

## WAFarmers pleased farmers have final say

WAFarmers welcomes the announcement from the State Government that will allow traditional owners, freehold land owners and lease holders to decide whether hydraulic fracturing can take place on their land.

WAFarmers President Tony York said WAFarmers has continually supported the right for farmers to have the final say on what occurs on their property.

"In the WAFarmers submission to the Independent Scientific Inquiry into Hydraulic Fracturing, we suggested the decision for fracking to occur on freehold and leased land be left to individual farmers to negotiate the terms of access," Mr York said.

"WAFarmers will always support our members and the wider industry's right to farm and to have the ultimate decision whether exploration occurs on their property.

"Farmers are strong advocates for the environment and water resources; it is in producer's best interest to care for their land. WAFarmers will continue to advocate for further mechanisms to control how environmental and water resources can be protected and ultimately giving the land holder the right of veto.

"WAFarmers are pleased to see the Government has adopted all 44 of the recommendations from the Scientific Review and has done well to find a balance between protecting the state's environmental assets and growing the state's economy.

"WAFarmers will be encouraging the State Government to formally adopt the Land Access Agreement which was developed by WAFarmers with Australia Petroleum Production and Exploration Association, vegetablesWA and the Pastoralists and Graziers Association of WA and make it an enforceable document.

**When UV is 3 or above  
Be SunSmart**

But how do you know when?

**GRAB the free  
SunSmart  
app!**

The sun's ultraviolet (UV) radiation is the major cause of skin cancer.  
UV cannot be seen or felt and can damage you on cool or cloudy days.  
The sun protection times tell you when UV is forecast to be 3 and above, that's the time to be SunSmart.  
Grab the app or visit [myUV.com.au](http://myUV.com.au)

**SUNSMART**

**Cancer Council  
Western Australia**

# Interesting facts about Christmas

CHRISTMAS celebrations occur all over the world, although the day on which it is celebrated varies, as well as the decorations, food and customs. Many of the origins of Christmas and its “factual” past can be contradictory, so you may find some surprises in our list of interesting facts about Christmas. Check to see how many facts in our list you already knew and then test your family and friends.

## Historical Christmas Facts:

- 1066 – King William I of England was crowned on Christmas Day.
- 1377 – During a Christmas feast hosted by King Richard the II of England in 1377, three hundred sheep and twenty-eight oxen were consumed.
- 1640 – Scotland abolished the observance of Christmas (until 1958 when it became a legal holiday).
- Franklin Pierce (1853-1857) is believed to have been the first President to put a Christmas tree in the White House.
- Christmas trees were banned by President Teddy Roosevelt in the White House in 1901 because the President was concerned about the environmental effects, but his sons decorated a small tree cut on the White House grounds and hid it in a closet until Christmas morning.
- 1915 – Hallmark introduced their first Christmas cards.
- Boston, Massachusetts receives a tree from Nova Scotia, Canada because of the support given to the city of Halifax in 1917 when they experienced an explosion and fire disaster.
- The people of London receive a tree for Trafalgar Square from the people of Oslo, Norway every year to thank them for their assistance during World War II.
- During World War II, the Bicycle playing card company made decks of cards and gave them to the prisoners of war in Germany with hidden escape routes revealed when the cards were soaked in water as Christmas presents.
- 1962 – the United States issued the first Christmas postage stamp.

## Christmas Tree Facts:

It is believed Germany began the tradition of the Christmas tree. Additionally, tinsel, which was once made of actual silver, is traced to 1610 in Germany.

Christmas trees are grown in all 50 states including Hawaii and Alaska, but California, Oregon, Pennsylvania, Michigan, North Carolina, Washington, and Wisconsin are

the top Christmas tree producing states in the U.S.

Christmas trees have been sold in the United States since 1850.

Every year, Europeans decorate about 50 million live Christmas trees and the United States about 35 million.

It takes on average 6-8 years for a Christmas tree to be fully grown, but it can take as long as fifteen years.

Rio de Janeiro, Brazil has the largest floating Christmas tree in the world; it is 278 feet tall.

The tallest living Christmas tree in America is the 161-foot tree in Coeur d'Alene, Idaho. The star placed at the top is ten feet tall!

## Christmas Food and Drink Facts:

A “grog” is any drink made with rum; hence the name for the egg, cream, nutmeg, and rum drink “eggnog” which originated in 1607 in Jamestown, Virginia.

Each year, approximately ten million Christmas turkeys are eaten in the U.K. and 22 million in the United States.

Today, wassail is hot apple cider with honey and spices, but the drink came from the Middle Ages, when it was originally made with wine, ale, or hard cider topped with stale bread or beaten eggs. Neighbors would visit on Christmas Eve and drink to each other's health (ves heill meant “in good health” in Old Norse).

One can eat more than 7,000 calories at Christmas when you add up the turkey, dressing, mashed and sweet potatoes, other sides, pie, rolls, and drinks.

Ever wonder about the string on a box of animal crackers? Introduced around Christmas in 1902, the string was intended to be used to hang the cracker boxes on your Christmas tree.

A “sugar plum” featured in Christmas poems and songs was a type of candy with dried fruit, usually a plum, and spices rolled into a ball and coated with chocolate or hard sugar candy.

Fruitcakes last a long time intentionally. They were originally baked at the end of harvest and some of the cake was saved to be eaten at the beginning of the harvest the following year as people thought that would bring a good crop. It is the sugar and alcohol combination that helps them last so long.

## Christmas Facts About Santa and His Reindeer:

Our image of Santa Claus has some interesting origins. Early pictures of St. Nico-

las show him with a stern expression. Santa Claus originally appeared in a newspaper ad. Washington Irving is credited with creating Santa's flying sleigh in 1819 and cartoonist Thomas Nast began illustrating our current image of Santa in Harper's Weekly in 1863.

Historically, St. Nicholas lived in the province of Lycia in the 4th century A.D. The Dutch name for St. Nicholas was Sinterklaas, phonetically changed to “Santa Claus” in the English-speaking world. Other names for this holiday figure include Le Befana in Italy, Dueshka Moroz (“Father Frost”) in Russia, Kris Kringle in Germany, and Pere Noel in French.

Rudolph the Reindeer was created by the U.S. department store Montgomery Ward to get children to buy Christmas coloring books, however, his nose was not red as they did not want him to appear as a chronic alcoholic.

Clement Moore's poem “Twas the Night Before Christmas” introduced Santa's eight reindeer named Dasher, Dancer, Prancer, Vixen, Comet, and Cupid, plus Duner and Blixem (German words for thunder and lightning which later evolved into Donner and Blitzen). Although most of the names sound male, they were probably female, as male reindeer shed antlers in winter.

Leaving food for Santa originated with Norse children, who left food out for Odin's eight-legged horse Sleipnir. Dutch children left food in their wooden shoes for St. Nicholas' horse, although historically there is no mention of St. Nick having a horse. Now, American children leave cookies and milk for Santa. Other children around the world leave hay, carrots, and water for Santa's reindeer.

## Facts About Christmas Songs, Books, and Movies:

“Jingle Bells,” originally called “One Horse Open Sleigh,” was composed in Massachusetts by James Pierpont as a Thanksgiving song and was the first song sung on December 15, 1965 by astronauts Tom Stafford and Wally Schirra while they were in space.

All of the items in the song “The Twelve Days of Christmas” total 354 gifts.

Brenda Lee was only thirteen years old when she recorded “Rockin' Around the Christmas Tree” in 1958.

Charles Dickens's A Christmas Carol was written in six weeks. On the internet, IMDB lists 202 various A Christmas Carol



# Interesting facts about Christmas

film adaptations, including films with non-traditional stories.

In Dublin in 1742 the Christmas oratorio, *The Messiah*, by George Frederick Handel was first performed.

Paul McCartney's "A Wonderful Christmas Time" is in the animated "Rudolph the Red-nosed Reindeer."

Stanley Weintraub wrote about a famous Christmas truce in 1914 during World War I when the Germans and British exchanged gifts and played football in his book *Silent Night: The Story of the World War I Christmas Truce*.

The song "We Wish You a Merry Christmas" originally was sung by servants to demand alcoholic drinks from their masters. "We won't go until we get some, so bring some out here."

Bing Crosby's "White Christmas" is the best-selling Christmas song with more than more than 50 million copies sold around the world.

## Religious Christmas Facts:

Many people abbreviate Christmas "Xmas," which is actually based upon X being the first letter of Jesus Christ's name in Greek.

First recorded in 1038, old English provided the word Christmas from Cristes mæsse, which means "Christ Mass."

A Christmas wreath with holly represents the blood Jesus shed (the red berries) and the crown of thorns.

The Bible indicates a plurality of wise men, but it is tradition that says there were three, probably as a result of three gifts being given – gold, frankincense, and myrrh.

The three traditional colors used for most Christmas decorations have religious significance. Red is for the blood of Jesus Christ, green symbolizes His resurrection, and gold His status as the King of kings.

Christmas is not a Biblical holy day as it is not mentioned

in the Bible. In fact, many of the symbols and customs we associate with Christmas began with winter solstice rituals and pagan festivals.

The account of Jesus birth, life, death, and resurrection – what is often referred to as "The Christmas Story" appears in the New Testament Gospels of Matthew and Mark.

The Latin word natalis, which means "day of birth," is the origin of the word Noel.

## Fun Facts About Christmas:

About \$1,000 is spent on Christmas gifts each year by the average American family.

In 1836 Alabama was the first U.S. state to set Christmas as a legal holiday and in 1907 Oklahoma was the last.

Children who write letters to Santa Claus in the United States have their letters delivered to Santa Claus, Indiana.

It is believed that Sir Henry Cole of London, England sold the first Christmas cards in 1843. Only one thousand cards were sold.

Over three billion Christmas cards are sold in the U.K. and the U.S. each year.

Many people think Black Friday is the busiest shopping day of the year in the United States. However, the busiest shopping days of the year are the Friday and Saturday before Christmas.

Queen Victoria's husband, Prince Albert, was German and



STELLA and Santa.

is credited with establishing the popularity of the Christmas tree in England in the mid-nineteenth century.

The Rubik Cube, the largest selling Christmas toy in 1980, sold for \$1.99, but now sells for nearly \$10.

The origin of stockings being hung on Christmas came from the Dutch custom of leaving shoes full of food for St. Nicolas' donkey which would then be filled with small gifts by St. Nicholas.

The United States Post Of-

fice anticipated delivering more than 15 billion pieces of holiday mail, including more than 850 million packages.

The Christkindlesmarkt in Nuremberg, Germany, first held in 1570, is one of Europe's oldest Christmas markets and claims to be the largest in Europe. It sells gluhwein (spiced, mulled wine), sweets, sausages, and Christmas decorations and ornaments.

Twenty-eight sets of LEGOS are sold every second during the Christmas season.

**Libertyrural**  
DISTRIBUTOR  
**NEWDEGATE  
STOCK &  
TRADING**  
Ph: 9871 1556  
MOB: 0428 711 556  
24 hours fuel at Newdegate  
**FOR ALL ON FARM  
DELIVERIES OF FUEL**

## Peter Rundle MLA

Member for Roe

### Narrogin Office

PO Box 378  
Narrogin WA 6312  
Ph 08 9881 1225  
Fax 08 9881 3082

### Esperance Office

107 Dempster St  
Esperance WA 6450  
Ph 08 9071 6555  
Fax 08 9071 6788

[Peter.Rundle@mp.wa.gov.au](mailto:Peter.Rundle@mp.wa.gov.au)

[www.peter.rundle.com.au](http://www.peter.rundle.com.au)

@PeterRundleMLA

facebook.com/PeterRundleRoe



**THE NATIONALS** for Regional WA

# Interesting facts about Christmas

During the Christmas season each year more than 1.76 billion candy canes are made.

Retailers anticipated people in the U.S. would spend a total of \$465 billion which would create 4.6 million jobs if the money was spent entirely on U.S. made products.

While shopping during the Christmas season, shoppers use their Visa cards more than six thousand times every minute.

If you are really into recycling, you can eat your Christmas tree. The needles provide vitamin C. You can also eat pine nuts, if your tree comes with pinecones! Some Christmas trees become food for zoo animals.

Santa's elves can be traced back to the "nature folk" of pagan religions.

Mistletoe was an ancient symbol of virility, so someone stood under it if they were available to the opposite sex.

Ukrainian Christmas tree decorations often include an artificial spider and web because they believe a spider web found on Christmas

morning brings good luck.

Letters to Santa Claus from the millions of kids all over the world go to a Canadian Post Office if the zip code is HOH OHO ("Ho, Ho, Ho").

People used to tell scary ghost stories on Christmas Eve a century ago.

In the 1800s, artificial Christmas trees were made from dyed goose feathers or the stuff hula skirts were made from – green raffia.

The Addis Brush Company made pine-like "branches" using the machines created to make toilet brushes. Used for artificial trees, they could hold heavy decorations and were not flammable.

Newspaper publishers hate publishing phone numbers as the potential for a mistake is high. In 1955, Sears tried to put the number of one of their stores where children could call Santa Claus and tell him what they wanted for Christmas in the newspaper. However, the number printed was for the NORAD (North

American Aerospace Defense Command) hotline. Thus, "Santa Tracker" began. NORAD still provides flight updates on the internet, TV news, and a special iPhone app each Christmas.

December 25 to January 5, referred to as "Christmastide" or "Twelve Holy Days," is the derivation of the song "The Twelve Days of Christmas."

Denny's restaurants in the United States originally stayed open all day and night, so their buildings were built without locks. In 1988, they decided to close on Christmas Day, but they could not lock the doors!

The Internet lists nearly fifty funny Christmas songs, including "Chipmunks Roasting on an Open Fire," "Christmas Don't Be Late" (the Chipmunk Song), and "Grandma Got Run Over by a Reindeer."

Nearly six million dollars are spent during the holiday season on ugly Christmas sweaters.

## Need to keep the kids busy?







# THINK TANK

## HOW GOOD IS YOUR CHRISTMAS KNOWLEDGE?

1. After leaving Bethlehem, to which country did Joseph, Mary, and Jesus travel?
2. Christmas is celebrated on the 25th of December. Who is the patron saint remembered on the 26th of December?
3. Every elf has this ornament on the tip of their shoes. Which ornament are we talking about?
4. Everyone is familiar with the mistletoe tradition. What is the color of the berries of the plant?
5. How does Santa Claus go back up the chimney to continue his journey of delivering gifts?
6. How many points does a snowflake traditionally have?
7. Name the eight original Reindeer.
8. One of the most famous Cola companies in the world used to have advertisements featuring a happy, smiling Santa Claus. Name the company.
9. Red and green are the two colors most associated with Christmas. Which are the two other colors, according to Christmas holiday trivia, that are also extremely popular in this season?
10. Traditionally, kids leave out snacks for Santa Claus. What are these snacks?
11. Traditions of Christmas around the world will tell you that Santa Claus is known by many names. What is the French name for Santa Claus?
12. Two of the reindeers are named after weather phenomenon. Name the reindeer.
13. What are the gifts that the Three Wise Men gave baby Jesus, according to Christmas history?
14. What is the name of Ebenezer Scrooge's partner, from the play, A Christmas Carol?
15. What two phrases will you almost always find on Christmas gift tags?
16. When does the Russian Orthodox Church celebrate Christmas?
17. Which country can be credited with the creation of the Christmas beverage, eggnog?
18. Which country does St. Nicholas originally belong to?
19. Which country gifts the Christmas tree that is placed at the Trafalgar Square in London, according to Christmas tradition?
20. Which is the most popular ornament used to place at the top of the Christmas tree?
21. Which was the first state in the United States to recognize Christmas as an official holiday?
22. Which was the last state in the United States that declared Christmas a legal holiday?
23. Who was the star of the Christmas movie Jingle All the Way?
24. Who tries to stop Christmas from coming by stealing all things of Christmas from "the Who's"?
25. Who was the star of the movie titled White Christmas?
26. What is the first name of Scrooge, the principal character of the novel A Christmas Carol?
27. Who was the author of A Christmas Carol?
28. How many ghosts are there in A Christmas Carol?
29. What was the name of the animated Christmas movie featuring Tom Hanks?
30. Which milk based beverage is available around Christmas holidays and comes in both alcoholic and non-alcoholic versions?
31. Stollen is the traditional fruit cake of which country?
32. What name is given to small sausages wrapped in bacon, a staple at a British Christmas dinner?
33. The red and white costume of Father Christmas was allegedly first introduced by which drinks manufacturer?
34. In which direction should you stir mincemeat for good luck—clockwise or anti-clockwise?
35. What would you stick into an onion when following a traditional bread sauce recipe?
36. A swede is a cross between which two vegetables?
37. What is a female turkey called?
38. What is the name of the skin that hangs from a turkey's neck?
39. Which spirit is traditionally added to butter and served with Christmas pudding?
40. True or false: Before turkey, the traditional English Christmas dinner included a pig's head smothered in mustard.
41. Visions of which sweet foodstuff danced in children's heads as they slept according to Clement Clarke Moore's poem 'Twas the Night before Christmas'?
42. In Oaxaca City, Mexico, Noche de rábanos is celebrated every December 23rd. Which food gives this festival its name?
43. Approximately how many turkeys were purchased at Christmas in 2013 in the UK—1 million, 10 million or 20 million?
44. What is a 'Bûche de Noël', commonly eaten in France at Christmas?
45. What would you be drinking if you had 'Gluhwein'?
46. Which type of sweet bread loaf, which originated in Milan, is traditionally eaten at Christmas in Italy and many other European countries?
47. Which Christmas food is it considered good luck to eat one of on each of the 12 days of Christmas?
48. As the clock chimes midnight to ring in the New Year, a Spanish tradition involves eating twelve of what—one for each chime?
49. Which type of tree was the partridge sitting in according to a well-known Christmas song?
50. What are two other names for Santa Claus?

Answers: 1. Egypt; 2. Stephen; 3. Bells; 4. White; 5. He places his finger on the side of his nose, gives a smile and a nod.; 6. Six; 7. Blitz, Comet, Cupid, Dasher, Prancer, Vixen, Dancer, and Donner; 8. Coca Cola; 9. Gold and Silver; 10. Cookies and milk; 11. Pere Noel; 12. Donner, which means thunder in German, and Blitz, which means lightning; 13. Gold, Myrrh, and Frankincense; 14. Jacob Marley; 15. To and From; 16. January 7th; 17. England; 18. Turkey; 19. Norway; 20. Angel; 21. Alabama; 22. Oklahoma; 23. Arnold Schwarzenegger; 24. The Grinch; 25. Bing Crosby; 26. Ebenezer; 27. Charles Dickens; 28. Four; 29. The Polar Express; 30. Eggnog; 31. Germany; 32. Pigs in blankets; 33. Coca-Cola; 34. Clockwise; 35. Cloves; 36. A cabbage and a turnip; 37. A Hen; 38. Wattle; 39. Brandy; 40. True; 41. Sugar-plums; 42. Radish; Noche de Rábanos is night of the Radishes when Mexican craftsmen create carvings from root vegetables; 43. 10 million; 44. Yule log (cake/chocolate log or similar acceptable); 45. Mulled wine; 46. Panettone (a type of sweet bread); 47. Mince Pies; 48. Grapes; 49. Pears; 50. Saint Nick and Kris Kringle



# Farming MARKET UPDATE

28<sup>th</sup> November 2018

## Katanning Trade Sale Market Report



Total Yarding: 20,629

Elders Yarding: 7,174

| C/kg based on Top Price Bare Shorn |              |
|------------------------------------|--------------|
| Lamb                               | \$6.50       |
| Mutton                             | \$4.30       |
| Boner Mutton                       | \$4.40       |
| Wethers                            | \$90 - \$110 |
| Air Freight                        | \$6.60       |

### Market Tone

|                     |                |
|---------------------|----------------|
| Heavy Mutton        | Barely Equal   |
| Trade Mutton        | Equal          |
| Boner Mutton        | \$2 - \$3 Up   |
| Wethers Export      | Equal          |
| Wethers Store       | Equal          |
| XB Lambs Heavy *O/S | Equal          |
| XB Trade Lambs *O/S | \$2 - \$3 Up   |
| XB Light Trade *O/S | \$2 - \$3 Up   |
| XB Store Lambs *O/S | \$6 - \$8 Down |
| Merino W/Lamb Trade | Equal          |
| Merino W/Lamb Store | Equal          |
| Merino E/Lamb Trade | Equal          |
| Merino E/Lamb Store | Equal          |
| Ewe Hoggets         | Equal          |
| Rams Export         | Equal          |
| Rams Killing        | Equal          |
| Suckers Heavy       | N/Q            |
| Suckers Medium      | N/Q            |
| Suckers Light       | N/Q            |

### Mutton

|              |                      |
|--------------|----------------------|
|              | (Bare Shorn)         |
| Over Fat     | N/Q                  |
| Heavy Trade  | \$100 - \$120 25kg   |
| Prime Trade  | \$90 - \$100 21-25kg |
| Prime Boning | \$85 - \$95 18-21kg  |
| Lightweight  | \$40 - \$85 16-18kg  |
| Boners       | N/Q Under 16kg       |

### Wethers

|       |              |
|-------|--------------|
| Trade | \$90 - \$100 |
| Store | \$50 - \$90  |

### Wethers Hoggets

|       |              |
|-------|--------------|
| Trade | \$90 - \$110 |
| Store | \$50 - \$90  |

### XB Lambs O/S

|                |                 |            |
|----------------|-----------------|------------|
| Heavy          | \$140 - \$161.5 | 22kg +     |
| Medium         | \$110 - \$140   | 18-22kg    |
| Light Trade    | \$80 - \$115    | 15-18kg    |
| Stores         | \$30 - \$80     | Under 15kg |
| Suckers Heavy  | N/Q             | 22kg       |
| Suckers Medium | N/Q             | 18-22kg    |
| Suckers Light  | N/Q             | 15-18kg    |
| Suckers Store  | N/Q             | Under 15kg |

### Ram Lambs

|        |             |
|--------|-------------|
| Export | N/Q         |
| Store  | \$30 - \$70 |

### Ram Hoggets

|        |             |
|--------|-------------|
| Export | N/Q         |
| Store  | \$30 - \$70 |

### Ewe Hoggets (Wht Tag)

|       |              |
|-------|--------------|
| Trade | \$70 - \$110 |
| Store | \$40 - \$70  |

### Merino Ewe Lambs (Onge Tag)

|        |              |
|--------|--------------|
| Export | \$70 - \$100 |
| Store  | \$30 - \$70  |

### Merino Wether Lambs (Onge Tag)

|        |              |
|--------|--------------|
| Export | \$70 - \$100 |
| Store  | \$30 - \$70  |

### Rams

|         |             |
|---------|-------------|
| Export  | N/Q         |
| Store   | \$30 - \$70 |
| Killing | \$10 - \$30 |

### Market Comments:

Numbers were down by approximately 5,000 head.

\*O/S = Old Season





# Farming MARKET UPDATE

5<sup>th</sup> December 2018**Katanning Trade Sale Market Report**

Total Yarding: 28,371

Elders Yarding: 8,715

| C/kg based on Top Price Bare Shorn |              |
|------------------------------------|--------------|
| Lamb                               | \$6.60       |
| Mutton                             | \$4.50       |
| Boner Mutton                       | \$4.60       |
| Wethers                            | \$90 - \$110 |
| Air Freight                        | \$6.70       |

**Market Tone**

|                     |              |
|---------------------|--------------|
| Heavy Mutton        | \$2 - \$4 Up |
| Trade Mutton        | \$2 - \$4 Up |
| Boner Mutton        | \$2 - \$4 Up |
| Wethers Export      | \$2 - \$4 Up |
| Wethers Store       | \$2 - \$4 Up |
| XB Lambs Heavy *O/S | Fully Firm   |
| XB Trade Lambs *O/S | Fully Firm   |
| XB Light Trade *O/S | \$2 - \$4 Up |
| XB Store Lambs *O/S | \$2 - \$4 Up |
| Merino W/Lamb Trade | Equal        |
| Merino W/Lamb Store | Equal        |
| Merino E/Lamb Trade | Equal        |
| Merino E/Lamb Store | Equal        |
| Ewe Hoggets         | \$2 - \$4 Up |
| Rams Export         | Equal        |
| Rams Killing        | Equal        |
| Suckers Heavy       | N/Q          |
| Suckers Medium      | N/Q          |
| Suckers Light       | N/Q          |

**Mutton**

|              |                      |
|--------------|----------------------|
|              | (Bare Shorn)         |
| Over Fat     | N/Q                  |
| Heavy Trade  | \$110 - \$128 25kg   |
| Prime Trade  | \$95 - \$110 21-25kg |
| Prime Boning | \$85 - \$95 18-21kg  |
| Lightweight  | \$55 - \$85 16-18kg  |
| Boners       | N/Q Under 16kg       |

**Wethers**

|       |              |
|-------|--------------|
| Trade | \$90 - \$110 |
| Store | \$50 - \$90  |

**Wethers Hoggets**

|       |              |
|-------|--------------|
| Trade | \$90 - \$110 |
| Store | \$50 - \$90  |

**XB Lambs O/S**

|                |               |            |
|----------------|---------------|------------|
| Heavy          | \$140 - \$158 | 22kg +     |
| Medium         | \$120 - \$140 | 18-22kg    |
| Light Trade    | \$85 - \$120  | 15-18kg    |
| Stores         | \$40 - \$85   | Under 15kg |
| Suckers Heavy  | N/Q           | 22kg       |
| Suckers Medium | N/Q           | 18-22kg    |
| Suckers Light  | N/Q           | 15-18kg    |
| Suckers Store  | N/Q           | Under 15kg |

**Ram Lambs**

|        |             |
|--------|-------------|
| Export | N/Q         |
| Store  | \$30 - \$80 |

**Ram Hoggets**

|        |             |
|--------|-------------|
| Export | N/Q         |
| Store  | \$30 - \$80 |

**Ewe Hoggets (Wht Tag)**

|       |              |
|-------|--------------|
| Trade | \$70 - \$120 |
| Store | \$30 - \$70  |

**Merino Ewe Lambs (Onge Tag)**

|        |              |
|--------|--------------|
| Export | \$70 - \$100 |
| Store  | \$30 - \$70  |

**Merino Wether Lambs (Onge Tag)**

|        |              |
|--------|--------------|
| Export | \$70 - \$100 |
| Store  | \$30 - \$70  |

**Rams**

|         |             |
|---------|-------------|
| Export  | N/Q         |
| Store   | \$30 - \$80 |
| Killing | N/Q         |

**Market Comments:**

Numbers up by 8000 head, market strong on all types of sheep.

\*O/S = Old Season

# SPORT



## Davo's Knockout Singles popular

### ■ HOPETOUN BOWLS

ON the weekend of November 24-25th Davo's Knockout Singles were played with 27 players on Saturday and 23 on Sunday.

The players were divided into threes with two playing and one marking, eight ends, the winner of the three then moved into the next block of winners playing Saturday pm and Sunday am. The overall winner was Bub McGlinn followed by Alec Woods, Ron Davis, Des Barr, Denise Edwards and Darryl Quinn with other bowlers also getting a prize for winning a game.

Social bowls were played in the afternoon it ended with a fish and chip tea provided by Davo with salads provided by members—a great weekend thanks to Ron and Lorraine.

Ladies Bowls on the 28th with 9 Ladies playing pairs and Triples. Winners of the Scratchies were Trix Boyd, Eva Flanagan

and Jeanette Sounis.

Mixed Scroungers with 13 playing, the winner of the chook was Mary Kornaus.

Players have been travelling with a team of Ladies playing at Middleton Beach Albany and two teams of men played in the Professionals Day at Esperance. The team of John and Lance Goddard, Rod Edwards and Des Barr winning the day with three wins.

The ILRR was played at Mt Barker with our team of SECLBL Pairs team of Ladies running second.

Out of this round robin 12 players are selected to go on to play in the Inter Zone Round Robin to be played at Beverley with two of our players being chosen—Coral Grant and Margaret Hawkins, congratulations girls.

Sunday December 2nd with Social bowls played with 12 players playing Pairs.

Wednesday December 5th Ladies Bowls with 11 Ladies playing pairs and Triples.

Mixed Scroungers with 22 players the

winners of the chooks were John Goddard and Rusty Lee.

On behalf of the Committee I wish all our members a happy and safe Christmas and New Year—Happy Bowling.

—Pam Cousins, Ladies President

#### Forthcoming Events:

Every Wednesday Ladies Bowls 8.45am; Mixed Scroungers 1pm  
Friday's Roll up at 4 pm  
December 15/16 Men's and Ladies Triples Championships  
December 16th Christmas Party  
December 23rd Social Bowls  
December 30th Mixed Triples K Coventry and D Panizza WFI day  
January 6th and 13th Social Bowls  
January 11/13th Men's ILRR Esperance  
January 19th Ravensthorpe OD Transport Day  
January 20th Port Hotel Day  
January 24-25th Ladies Classic  
January 26th Cancer Day with Hopey Tyre Services  
February 3rd Men's IZRR and Condingup Open  
February 5th Ladies Pennants Hopetoun v Esperance Blue

### COMMUNITY SPIRIT NEWSPAPER INC

## Community Events Notice Board

The Community Spirit is your community based newspaper, covering local news and events.

We are pleased to support local events

#### TERMS & CONDITIONS

##### POSTERS:

1. Are to be in **Black & White (Mono)** only.
2. Design must be **completed by client** and submitted as a JPEG or PDF.
3. Are to be for a **Local Community Event** only.
4. To be placed on Notice Board at Community Spirit discretion.
5. Notice Board is free providing there is to be a follow up article for the paper after the event. If no article provided then group will not be allowed this space again.
6. There is limited area for the Notice Board so first in will get the space.

For further information please contact the  
Community Spirit Communications Manager  
on 0408 840 447






Full Day Snake Handling Course including live venomous snake handling scenarios

Successful participants will receive a recognised qualification enabling them to apply for a snake/reptile removalist licence

Monday 14th January 2019 9am - 5pm

\$385 per person including GST

Bookings Essential. Places Limited.  
Contact Hopetoun CRC to Register



Instructor Ann Gerlach - joined the Bub Cooper team in 2016 with over a decade of working with Bush Wisdom Survival. She has a secondary teaching degree in science and mathematics, before moving into the area of science communication and outreach at tertiary institutions and more recently environmental and sustainability work with local government.



**Hopetoun  
Community  
Resource  
Centre**

46 Veal St  
Hopetoun WA 6348  
Phone: 9838 3062  
Email: hopetoun@crc.net.au  
www.hopetounwa.com



ONLINE PARENTING  
SUPPORT FOR COUNTRY  
FAMILIES

LIVE CHAT, WORKSHOPS,  
CONSULTS &  
EARLY PARENTING GROUPS

Regional 1800 111 546  
Metro 9368 9368  
Countryfamilies@ngala  
www.ngala.com.au

#HealthyCountryKids

### FREE NGALA WORKSHOPS via Video Conference at HOPETOUN CRC

|                                                                                                                                                                                                                                                                                                     |                                                                                                                                                                                                                                                                                                      |
|-----------------------------------------------------------------------------------------------------------------------------------------------------------------------------------------------------------------------------------------------------------------------------------------------------|------------------------------------------------------------------------------------------------------------------------------------------------------------------------------------------------------------------------------------------------------------------------------------------------------|
| <b>SLEEP 0-6 MONTHS</b><br>Thursday 13th December 2pm<br>Discussing the art and science of sleep for babies 0 - 6 months <ul style="list-style-type: none"> <li>• Awake times</li> <li>• Tired signs</li> <li>• Sleep associations</li> <li>• Practical ideas and strategies</li> </ul>             | <b>BABY/TODDLER &amp; PRE-SCHOOLER QUESTION &amp; ANSWER WORKSHOP</b><br>Tuesday 18th December 2pm<br>Send us your parenting questions or ask them in person in this open Question and Answer workshop                                                                                               |
| <b>SLEEP 6 MONTHS - 1 YEAR</b><br>Thursday 20th December 2pm<br>Discussing the art and science of sleep for babies 6 months - 1 year <ul style="list-style-type: none"> <li>• Awake times</li> <li>• Tired signs</li> <li>• Sleep associations</li> <li>• Practical ideas and strategies</li> </ul> | <b>SOLIDS &amp; MEALTIMES</b><br>Thursday 3rd January 2pm<br>Discussing moving onto solids and managing mealtimes for children aged 6 - 18 months <ul style="list-style-type: none"> <li>• When and how to start solids</li> <li>• Mealtimes</li> <li>• Allergies</li> <li>• Fussy eating</li> </ul> |

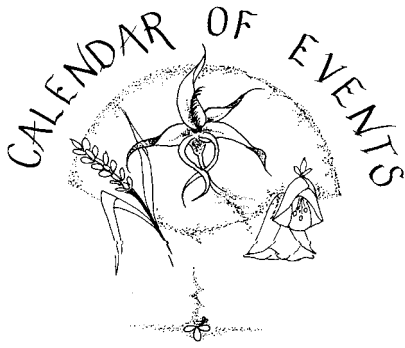
Supported by the WA  
Country Health Service



Hopetoun  
Community Resource Centre  
your local connection

46 Veal St, HOPETOUN WA 6348  
Phone: 9838 3062  
Email: hopetoun@crc.net.au  
www.hopetounwa.com





## UPCOMING EVENTS

### December

- 13 Last day of School
- 13 Free Ngala Workshop—Sleep 0-6 months, 2-3pm, Hopetoun CRC
- 15 HPA Christmas Lights Competition entries close
- 16 HPA Christmas Lights Competition judging
- 18 HPA Christmas Lights Competition presentation, 10am Hopetoun Community Centre
- 18 Free Ngala Workshop—Baby, Toddler & Pre-schooler question & answer workshop, 2-3pm, Hopetoun CRC
- 18 Special Thai Christmas Cooking Class, 6-9pm, Hopetoun CRC
- 20 Free Ngala Workshop—Sleep 6 months - 1 year, 2-3pm, Hopetoun CRC
- 25 Christmas Day
- 26 Boxing Day

### January

- 1 New Year's Day
- 3 Free Ngala Workshop—Solids & Mealtimes, Hopetoun CRC
- 4 Club Merlot
- 8 Southerners General Meeting, 7pm, Hopetoun Sports Pavilion
- 11 Windspray Arts Exhibition Opening, 6-8pm, Hopetoun Community Centre
- 12 HPA Summer Festival Day, McCulloch Park, Hopetoun
- 14 Snake Handling Course, 9am-5pm, Hopetoun CRC
- 25 Australia Day

### February

- 1 Club Merlot
- 7 Community Spirit Deadline
- 12 Southerners General Meeting, 7pm, Hopetoun Sports Pavilion
- 15 Just the Girls, 7-11.30pm, Ravensthorpe Community Centre
- 23 Hopetoun Colour Run

For contributions to the Calendar of Events  
email the details to [contributions@cospirit.net](mailto:contributions@cospirit.net)

## REGULAR EVENTS

### HOPETOON

**BOOTS COOTING** Fridays 1.30 til 3.30 at Mary Ann Haven, Veal Street Hopetoun please Phone Rosa 0428 383 034 or Trix 9838 3378.

**BOWLS** Wednesday Ladies 9-30 am Mixed Scroungers 1pm, Thursday 9-30 am Coaching with Coral. Friday 4pm Roll up and fun. Sunday 1pm Social Bowls. Everybody welcome.

**CRAFT** Mondays from 1pm at Mary Ann Haven, all welcome.

**CRC, Library and Visitor Centre** Open Monday to Friday 9am to 4pm. Saturdays 10am to 1pm (Visitor Centre only). Committee Meetings bi-monthly, ask at CRC.

**CWA** 2nd Monday 1.30pm at Centre

**CWA SHOP** Saturdays 8.30 to 11.30. Library, secondhand goods, fresh vegetables, fruit, eggs, cakes and pies, honey, jams, and relishes, Asian food.

**FIRE BRIGADE TRAINING** Last Sunday of every month at Emergency Services Building, Veal St.

**GOLF** Saturday Ladies and Men's Golf 18 holes - Winter season names in by 11.30 Tee Off 12 noon, - Summer Season names in by 12 noon Tee Off 12.30.

Thursday Scroungers Ladies and Men's Golf 9 or 12 holes depending on the weather, names in by 1.15 Tee Off 1.30. Visitors and Learners are always welcome.

**HACC HEALTH SERVICE** Day Centre Program, Tuesdays, alternating weekly between Hopetoun and Ravensthorpe. Contact HACC for details.

**HOPETOON LOCAL MARKETS** first Sunday of each month except June, July and August when the markets go into recess for the winter. Ray White Real Estate outside area at 9am to 1pm. January markets will also be the first Sunday of the month. Please contact Robyn Cockram 0429925569 or cockram36@gmail.com for more details

**HOPETOON PROGRESS ASSOCIATION** Tuesday - Friday 9am till 2pm. Phone/fax 9838 3363. Monthly meeting last Tuesday of the month 7.30.

**MACHINING GROUP** Thursdays phone Wilma 9838 3098 or Mary 9838 3243.

**MEN IN SHEDS** Tamar St Tues & Thurs 8.30am-12, 1-3pm and Sat 8.30am-12pm. All men welcome contact Darryl Quinn 0428 442 517.

**MEN'S STAY ON YOUR FEET** Tuesday and Thursday, 9-10am at Men's Shed, Tamar St.

**OLD BASTARDS CLUB** Men only BBQ, Fridays. Contact HACC for details.

**POOL COMPETITION/DARTS** Wednesdays 7.30pm Port Hotel.

**POOL COMPETITION** Wednesday 7pm Wavecrest Bar and Bistro.

**SEA SEARCH AND RESCUE** Monthly training at Emergency Services Building, as indicated by regular signage on Veal St.

**SENIOR CITIZENS** Thursday 1.30 pm. Meetings 1st Thursday every second month from June, 10 am at Mary Ann Haven.

**SOUTHERN SCRIBES** Fourth Saturday 1pm, phone 9838 3472.

**STAY ON YOUR FEET** Tuesdays & Fridays 9am-10am Mary Ann Haven.

**STORYTIME** Every Monday 10am (except school and public holidays) at Hopetoun Public Library (inside Hopetoun CRC) Free stories, songs, rhymes and craft. Suitable 0-5y.

**WINDSPRAY ART** We meet every Thursday 10-2 at 65 France St. New members ALWAYS most welcome to join us. Watch CRC notice board for upcoming courses. Enquiries: Beryl Semple 0428 411 171, Louise Lodge 0427 700 613.

### MUNGLINUP

**GOLF** Ladies Golf: Wednesday by 8.45am Men's Golf: Saturdays by 11.30am.

### RAVENSTHORPE

**ENDURO CLUB** meet second Tuesday of month, 7-9 pm at clubhouse on Floater Rd. Contact Lance Stewart 0439 207 410.

**GOLF** April- October Ladies Golf: Wednesday names in by 9am Men's Golf: Saturday names in by 12pm

**GYM** membership available. Contact Ravensthorpe Shire 9839 0000.

**HAND GUN CLUB** Every second Sunday 9.30am Contact Ray Edwards 0427 381 162.

**HOSPITAL AUXILIARY** meets on second Tuesday of every second month at the red room. Starting Feb 14, 2017. Contact Judy Harp 98381565.

**MUSEUM** Open 10am to 4pm Tuesday to Saturday otherwise by appointment 9838 1044 or 9838 1583.

**OP SHOP** trading 10am to 1pm Tuesdays to Saturdays.

**PROGRESS ASSOCIATION MEETINGS** held on third Tuesday of each month, 7pm, Red Room, Ravensthorpe. New members always welcome.

**RAVENSTHORPE BASKETBALL** For more information contact Ethan Clarke 0452 261 717.

**RAVENSTHORPE PLAYGROUP** Thursday 9-11.30am at the Ravensthorpe Youth Club building. Please bring a piece of fruit to share.

**RAVENSTHORPE REGIONAL ARTS COUNCIL** RRAC Dance Program (During School Terms 1 & 2, 2019) Weekly Dance Classes for Adults and Children. Hopetoun, Ravensthorpe, Lake King, Jerramungup.

Contact Kirsty [rracordinator@westnet.com.au](mailto:rracordinator@westnet.com.au) or 0438 945 405. Facebook: RRAC Dance

**STATE EMERGENCY SERVICE** meets at 7.30 pm on second and fourth Wednesday of month at SES HQ, Morgan St.

**STAY ON YOUR FEET EXERCISES** exercises at Senior Citizens Centre, Fridays 10-11am.

**COMMUNITY RESOURCE CENTRE AND LIBRARY** Open all day from 9am-5pm Monday to Friday.

**TAI CHI** Senior Citizens Center each Wednesday 9.30 am - 10.30am \$2. Contacts Jessie Fairhead 0429389023 or Liz Aberline 0427839988.

**YOGA** Monday, Wednesday and Fridays from 6:45 pm, Saturdays 7:00 am and Sundays at 3:00 pm, Ravensthorpe District High School Hall.

If you know of any changes that are required to **REGULAR EVENTS**,  
please ensure you notify us at [contributions@cospirit.net](mailto:contributions@cospirit.net).

## CHURCH NOTICES

### ANGLICAN CHURCH

St Andrews Ravensthorpe service on the first and third Sunday of the month at 11am.

Peter the Fisherman, Hopetoun service every Sunday at 9am followed by morning tea.

Enquiries Kevin and Lyn Hosking, 9838 3130.

### HOPETOON COMMUNITY CHURCH

Hopetoun Community Church meets every Sunday at 10am in The Community Hall, lawn entrance.

Everyone is welcome to join us.

Contact: Roger Mansell 0458 749 722

### CATHOLIC CHURCH

Saturday before 1st Sun of the Month Hopetoun 6pm

Saturday before 3rd Sun of the month Hopetoun 6pm  
1st Sunday, Ravensthorpe, 8.30am

3rd Sunday, Ravensthorpe, 8.30 am

For enquiries please call Fr Joseph Sousa 9865 1248.

### RAVENSTHORPE CHRISTIAN FELLOWSHIP

Our service time for worship is 4 pm on the second and fourth Sunday's of the month, meeting at the U/C building corner of Carlisle and Kingsmill Streets Ravensthorpe.

For enquiries contact Rob Lloyd 98381153, or Ron Ross 98381188 or Elaine Archer 98381096

# CLASSIFIEDS

## PUBLIC NOTICES

### SWANS VETERINARY SERVICE

Morgans St, Ravensthorpe  
Tuesdays by Appointment  
Phone 9071 5777

### RAVENSTHORPE PROGRESS ASSOCIATION AGM

Tuesday 19th February 2019 at 7.00pm  
at the Community Centre Red Room  
Followed by refreshments  
Everyone Welcome

## DISCLAIMER

1. No liability shall be incurred by Community Spirit by reason of any amendments to, or error or inaccuracy in, or the partial or total omission of an advertisement, or by reason of delay or default or from any other cause whatsoever.

If in the opinion of Community Spirit the error clearly reduces the value of the advertisement and the advertiser notifies it to Community Spirit within seven days of the publication date, then no charge will be made for the advertisement containing the error.

2. While the Compilers normally aim to publish all material submitted if space is available, Community Spirit reserves the right to refuse to publish or republish any contribution or advertisement without giving any reason.

3. No articles, letters or advertisements will be accepted which may appear to be defamatory or accusatory, or to favour one side in a legal dispute.

4. Community Spirit reserves the right to shorten or otherwise amend any contribution other than advertisements.

Articles from a Not for Profit organisation regarding past events that thank sponsors within the body of the article, will be free of charge.

# *We're going digital!*

## **A new business approach, to help keep your business advertises local**

It is with great excitement that the Community Spirit announces that it is transforming! As we approach the third decade of the 21st century, the Community Spirit has determined that it is time for a real change in the way it operates. Bidding farewell to a system that has served the paper well, the paper will commence 2019 with a new model of operation and distribution.

From January 2019, the paper will no longer be bulk printed; we will be available online to all our readers, the Community Spirit committee are excited about the benefits and opportunities that this change brings. Most significantly, this decision:

- Enables the Spirit to be a wholly and solely locally produced paper (with the online and limited print editions being hosted and printed locally);
- Reduces the carbon foot print of the paper;
- Enhances the sustainability of the paper in a future that is increasingly online;
- Enables greater use of colour; and
- Allows the paper to incorporate a range of digital opportunities

**For you the advertisers, this will include web links to your business pages, social media sites and instant links to phone numbers, online forms, surveys and other such information.**

**All you need to do is send us your Web & Facebook address and which phone numbers you would like linked to your ad.**

If you send us your ad in PDF format, we can only link one of the 3 to your advert.

If you send your ad in word or we design your ad you can have all 3, at NO extra hidden costs, you only pay for your ad space.

So what does this mean to the readers? It means that they may continue to read the paper electronically, receiving the paper directly to their inbox, every fortnight, through our online subscription service and they can directly contact YOUR company through your advert in the Community Spirit!

## *The Spirit is not only surviving, but thriving!*



# LOOK LOCAL

## AGRICULTURAL SUPPLIES

### RAVENSTHORPE AGENCIES

BERNIE & ROZ BIDDULPH  
44 Morgans Street (PO Box 126)  
RAVENSTHORPE WA 6346  
PHONE: (08) 9838 1236  
FAX: (08) 9838 1206  
MOBILE: 0429 381 236  
EMAIL: ravyag@westnet.com.au



Fencing • Batteries • Oils & Lubricants • Chemicals & Fertilisers  
• Water Pumps • Water Tanks • Water Pipe & Fittings  
• Dog & Cat Food • Workwear & Boots AND HEAPS MORE!

## EARTHWORKS

### HOPETOUN EARTHWORKS

• Earthworks • Trenching • Siteworks  
• Clearing • Septic • Bobcat & Backhoe Hire

**Ph: 9838 3336**  
Fax: 9838 3360 Mobile: 0427 383 336  
Supply & Laying Ready Mixed Concrete

## PAINTING



### PAINTING

Reg. #4709  
Domestic, Commercial, Industrial,  
Farm Painting Specialty  
Clean, Precise and Quality work.  
Local references available.  
For FREE Quotation and Booking  
Call Mick  
**0419 701 332**

## AUTOMOTIVE

### EMG

ESPERANCE MOTOR GROUP  
**Service, sales, used  
and new vehicles**

ESPERANCE MOTOR GROUP PTY LTD  
Cnr Norseman & Sheldon Roads, Esperance  
Ph (08) 9071 0100 • Fax (08) 9071 0129

## HAULAGE

### HALLAMS CARTAGE CONTRACTORS

Specialising in:

• Water Cartage • Grain Carting  
• General Freight • Wool Cartage  
• Side Tippers • Gravel & Sand  
• Roller Hire • Low Loader Hire

**Kevin Ph: 0429 049 114**  
email: hallamscartage1@bigpond.com

## PLUMBING



**0407 358 983**

PL 923 & GF 002820

## BUILDING SERVICES



### HOPETOUN GARDEN AND PROPERTY SERVICES

Our Professional Building Services  
• Building Maintenance • Shed Tidy Ups  
• Carpet Cleaning • Floor Tile Cleaning  
• Upholstery Cleaning • Exterior Wall  
Cleaning • Gutter Cleaning • Window  
Cleaning • PVC Blind Cleaning

**CALL DONNA AND ALAN FOR A  
QUOTE ON 0400 716 885**

Email: hopetoungapservices@icloud.com

ABN: 65467395097

## LEGAL

### LANSSELL LEGAL

FOR ANY LEGAL ISSUE CONCERNING  
MEMBERS OF THE LOCAL COMMUNITY.

Monthly visits and 24/7 telephone advice  
from Phil's office in Perth.

pvlans@bigpond.com  
PO Box 4189 Mosman Park  
Or locally at 16 Culham Street Hopetoun

Website at [www.lansselllegal.com.au](http://www.lansselllegal.com.au)  
Liability Limited by a Scheme Approved under Professional Standards Legislation

## RESOURCE CENTRE



Hopetoun  
Community Resource Centre  
*Your local connection*

46 Veal Street Hopetoun WA 6348

P: 08 9838 3062 F: 08 9838 3590 E: hopetoun@crc.net.au

[www.hopetounwa.com](http://www.hopetounwa.com)

- Visitor Information Centre
- Internet Access & WiFi
- Photocopying & Faxing
- Professional Photo Printing
- Government Access Point
- TransWA Bookings
- Public Library
- National Park Passes
- Room Hire
- IT & Office Supplies
- Training Courses
- Handmade Gifts

## CRANE

### HOPETOUN MOBILE CRANE HIRE



**20 tonne Franna**  
**Steve Williams 0427 282 116**

## MASSAGE



### Remedial Massage & Bowen Therapy

**Glenys-Joy Brown 0428 502 097**

Health Rebates Available

## SMASH REPAIRS

### Albany Smash Repairs

Paul Armstrong  
Proprietor

Tel 9842 2838  
Fax 9841 6131

[paularmstrong@smashrepairer.com](mailto:paularmstrong@smashrepairer.com)



14 Prior Street, Albany WA 6330 • A/h 0418 936 010  
• All Makes & Models • All Work Guaranteed  
24 Hrs Towing

## EARTH MOVING

### GP&DR Belli Mini Earthworks

WE DO:

- Chain Trenching (Back Hoe attachment) • Slashing • Filling and leveling  
Pads • Post holes and footings with augers to 900mm Diameter,  
• Rotary Hoing • Retainer Walls • Site, Yard & Stockyard Clean Up  
• Landscaping • Sand, Gravel & Loam Supplies • Tip Truck & Hiab Hire

For enquiries contact: Greg or Di

**Mob: 0427 027 003**



## DISCOUNT RATES

The Community Spirit now has discounted  
rates for Not-for-Profit groups of 15%

If Not-for-Profit groups would like to receive any further  
discounts then please contact the committee to request it.  
The Committee is happy to sponsor large local events, but  
need advance notice to discuss the amount of the discount.

**ADVERTISING CLIENTS:** Receive a discount of 5-10% if  
you sign up for a 6-12 month period and if you are prepared to  
provide submissions for the paper.

For either of these great deals please don't hesitate to  
contact Kylie at [contributions@cospirit.net](mailto:contributions@cospirit.net)

## TYRES

### HOPETOUN TYRE SERVICE

GOOD RANGE OF

- Car • 4x4 • SUV Tyres
- Truck & Tractor Tyres
- Century Batteries
- Mobile Service

Contact Mary or Stephen  
**0407 313 062 or 9838 3156**



# BUSINESS AND SERVICES DIRECTORY

## ALBANY

**Albany Fitness** ..... 9842 1200 • sales@albanyfitness.com.au  
**Albany Smash Repairs** ..... 9842 2838 • F 9841 6131  
**Smith's Aluminium** ..... 9842 2617 • F 9842 1276 • smithali@westnet.com.au

## DOCTOR'S SURGERY

**Hopetoun Ravensthorpe Medical**  
 Hopetoun—Mon, Wed, Fri 9am-5pm ..... 9838 3854 • F 9838 3729  
 Ravensthorpe—Tues, Thurs 9am-5pm ..... 9838 1600  
**Community Transport Vehicle Co-ordinator** ..... 0439 335 147

## ESPERANCE

**ARC Accounting** ..... 9071 5833 • F 9071 4711  
**AS Smart Remedial & Relaxation Massage** Peter Dempster ..... 0428 422 368  
 Saturday morning appointments available  
**Compass Conveyancing (WA)** ..... 9071 1655 • F 9071 4104  
**Esperance Bay Dental** ..... 9071 5888  
**Esperance Ford** ..... 90710100 • F 9071 0129  
**Esperance Insurance Broker** Rod Parsons ..... 9071 3600 • F 9071 7279  
 M 0427 712 902 rodp@espib.com.au • www.espib.com.au  
**Esperance Toyota** ..... 90710100 • F 9071 0129  
**Powerplant Motorcycles** ..... 9071 1780 • F 9071 4252  
 tim@powerplantmc.com.au • www.powerplantmc.com.au  
**Sportspower - Greg Bower** ..... 9071 2365 • M 0402 124 681  
 esperance@sportspower.com.au  
**Swan Veterinary Services** ..... All hours 9071 5777 • F 9071 5057

## HOPETOUN

**4 Rivers Plumbing & Gas** ..... 0407 358 983 • petersmith@4rivers.com.au  
**Andrew Mann Carpentry** ..... 0409 295 794  
**Belli Mini Earthworks** ..... Ph/fax 9838 3898 • M 0427 027 003  
**Carpet Cleaning** ..... M 0400 716 885 • hopetoungapservices@icloud.com  
**Hallams Cartage Contractors** ..... M 0429 049 114  
 hallamscartage1@bigpond.com  
**Hopetoun Community Resource Centre** ..... 9838 3062 • F 9838 3590  
**Hopetoun Earthworks & Concrete Supply** 9838 3336 • F 9838 3360 • M 0427 383 336  
**Hopetoun Garden & Property Services** ..... M 0400 716 885  
 hopetoungapservices@icloud.com  
**Hopetoun General Store** ..... 9838 3052 • F 9838 3037  
**Hopetoun IGA** ..... 9838 3919 • Fax 9838 3399  
**Hopetoun Mobile Crane Steve** ..... 0427 282 116  
**Hopetoun Slashing** ..... 0429 049 114  
**Hopetoun Transport and Haulage** ..... 0429 049114 • F 9838 3360  
**Hopetoun Tyre Service** ..... 9838 3156 • F 9838 3157 • M 0407 313 062  
**Lansell Legal—PO Box 4189 Mosman Park 6912** ..... 0438 738 965  
 pvlans@bigpond.com  
**Little Barrens Early Learning Centre** ... 9838 3278 • littlebarrenselc@bigpond.com  
**Pest Control Local & Termites** ..... Ph/Fax 9880 1295 • M 0429 801 295  
**Port Hotel** ..... 9838 3053 • F 9838 3036 • Kitchen 9838 3375  
 www.porthotel.com.au  
**Sparrkleaning Services Serena Parr** ..... 0407 820 903  
**Ray White Rural South Coast WA** ..... 9838 3100 • F 9838 3250 • M 0429 299 797  
**Wavecrest Bar & Bistro** ..... 9838 3400 • venuemanager@wavecrest.net.au  
**Wavecrest Village** ..... 9838 3888 • village@wavecrest.net.au

## JERRAMUNGUP

**Jerramungup Electrical Service** ..... 9835 1171 • F 9835 1171 • M 0428 351 171

## LAKE KING

**Lake King Agencies & Roadhouse** ..... 9874 4094 • F 9874 4131  
**Lake King Tavern, Motel & Caravan Park** ..... 9874 4048  
 lakekingtavern@gmail.com • www.lakekingtavernmotel.com.au  
**Landmark Lake King - Ross** ..... 9874 4004 • F 9874 4005 • M 0428 105 059

## RAVENSTHORPE

**4 Rivers Plumbing & Gas** ..... 0407 358 983 • petersmith@4rivers.com.au  
**5K Livestock and Bulk Pty Ltd** ..... Ben Sutherland 0428271818  
**Capelli Hair Studio** ..... 0412 121 681 • 0457 567 680 • 9838 1708  
**Crazy Grannies** ..... M 0429 381 014 • 98381565  
**Dingo's Dog Kennels & Riley's Cattery** ..... 9838 1092 • M 0427 381 092  
**Eremia Camel Treks & Camel Museum** ..... 9838 1092 • M 0427 381 092  
**FE Daw & Sons** ..... 9838 1008 • F 9838 1218 • fedaw@wn.com.au  
**Freight Lines General - Peter** ..... 9838 1343 • F 9838 1382 • M 0427 381 211  
**Green Haven Tourist Park** ..... 9838 1050 • M 0439 369 838  
**Hannafoed Seed Grading** ..... M 0427 268 136  
**Hillside Hardware True Value** ..... 9838 1111 • 9838 1231  
**Joryn Haulage - Cameron & Dana Fairhead** ..... 0429 389 013 • 0428 389 013  
 jorynhaulage@bigpond.com  
**JV Transport** ..... Jason Carter 0448 955 152  
 Vicki Carter 0417 959 022 • jvtransport@bigpond.com  
**Madden Rural - Primaries Ravensthorpe** - ..... Neil 0429 119 596  
 Neil, Deb and Jordan McAllister ..... Jordan 0428 542 428 • Mick 0429 380 081  
**Meridian Agencies, Toys, Gifts and Post Office** ..... 9838 1276 • F 9838 1014  
**Palace Motor Hotel** ..... 9838 1005 • F 9838 1200  
**R & L Construction** ..... 9838 3888 • M 0428 381 232  
**R and R Heavy Diesel Services** ..... M 0438 164 616  
**Ravensthorpe Agencies - B&R Biddulph** ..... 9838 1236 • F 9838 1206  
**Ravensthorpe Agricultural Initiative Network (R.A.I.N.)**.. 9838 1018 • M 0417 174 299  
**Ravensthorpe Bulk Haulage** ..... Ph/fax 9838 1497  
 rbh@westnet.com.au • Wayne 0427 381 497 • Debbie 0428 381 497  
**Ravensthorpe Cellars** ..... 9838 1808 • F 9838 1809  
**Ravensthorpe Community Resource Centre** ..... 9838 1340 • F 9838 1335  
**Ravensthorpe Mechanical Service** ..... 9838 1146 • F 9838 1260  
 M 0428 381 146  
**Ravensthorpe Motel** ..... 9838 1053 • F 9838 1366  
**Ravensthorpe Pharmacy - Ravensthorpe** ..... 9838 1020 • 9838 1202  
 - Hopetoun ..... 9838 3333 • 9838 3335  
**South Coastal Agencies, Landmark** ..... 9838 1081  
 kyle.forsyth@landmark.com.au • M 0417 912 318  
 tom.major@landmark.com.au • M 0403 782 887  
**Yummylicious Candy Shack** 89 Morgans Street, Ravensthorpe • Ph: 08 9838 1647

## EMERGENCY NUMBERS

**EMERGENCY TO REACH ALL SERVICES** ..... 000  
 Ambulance NON-Emergency ..... 13 12 33  
 Hopetoun Volunteer Marine & Rescue ..... 9838 3207  
 Lake Grace Hospital ..... 9890 2222  
 Police - Hopetoun ..... 9838 3724  
 Police - Jerramungup ..... 9835 0222  
 Police - Lake Grace ..... 9865 1007  
 Police - Ravensthorpe ..... 9838 1004  
 Ravensthorpe Hospital ..... 9838 2211  
 State Emergency Service ..... 1300 1300 39





# 2019 HARD COPY SUBSCRIPTION

**SUBSCRIBE NOW  
and get 3 issues for FREE!**

This offer is valid until Issue 2 is published

☐ **ONE YEAR POSTAGE SUBSCRIPTION (23 Issues) \$80 (anywhere in Australia)**

NAME: .....

ADDRESS: .....

.....POSTCODE .....

PHONE.....EMAIL .....

## Method of Payment

Electronic transfer for \$ .....

A/C Name: Community Spirit Newspaper Inc. BSB: 036 184 ACC No: 27-0172

Please use your name as reference.

Email form to: [financeadmin@cospirit.net](mailto:financeadmin@cospirit.net) or post your form to: PO Box 135, Ravensthorpe, 6346

Enclose Cheque/Money Order for \$ .....

Please post cheque/money order and Subscription Form to: PO Box 135, Ravensthorpe, 6346

# DIGITAL SUBSCRIPTIONS ARE AVAILABLE VIA

**[www.ravensthorpe.crc.net.au](http://www.ravensthorpe.crc.net.au)**

# Ray White®

Sias, and all of the team at Ray White Rural South Coast WA, wish you peace, joy and prosperity throughout the coming year.

Thank you for your support and partnership during 2018.

We look forward to working with you in 2019 and the years to come.

## Merry Christmas

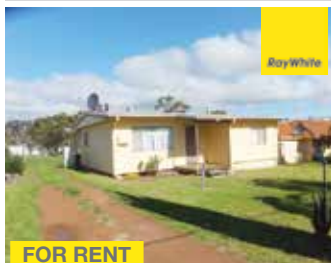
Closed from Saturday 22 December 2018 until 10am Tuesday 2 December 2019

**Phone 0427 383 100**



## Hopetoun and Ravensthorpe Rentals

### RAVENSTHORPE



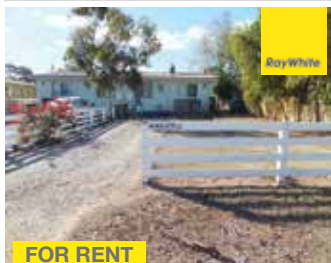
**FOR RENT**

**26 KINGSMILL STREET, RAVENSTHORPE**

**\$230.00 PER WEEK**

Older style 3 bed 1 bathroom home. Separate lounge, kitchen, dining room. Fully enclosed large back yard. Good access. Outside pets allowed.

### RAVENSTHORPE



**FOR RENT**

**51 A & B SPENCE STREET, RAVENSTHORPE**

**\$250.00 PER WEEK EACH, AVAILABLE IN THE NEW YEAR**

Semi furnished; 2 large bedrooms, 1 x bathroom. Fenced backyard. Air con & tile fire. Close to all amenities. Outside pets allowed.

### HOPETOUN



**FOR RENT**

**10 BARNETT STREET, HOPETOUN**

**\$220.00 PER WEEK- AVAILABLE**

Cosy 2 x 1 cottage style home with fire place and very large backyard. Amazing ocean views from the back patio. Pets negotiable

### HOPETOUN



**FOR RENT**

**5 & 6 26 VEAL STREET, HOPETOUN \$290.00 PER WEEK**

Stylish 3 x 2 units centrally located. Open plan kitchen, dining, and lounge. Balcony living with magnificent views of the ocean. Undercover carport. Not suitable for pets.

**26B FRANCE STREET \$300.00 PER WEEK**

Classy modern 3 x 2 brick home, situated on the rear of the block. Separate lounge, large open plan kitchen, dining with air con. Small easy care garden. Carport.

**214 BANKSIA ROAD \$300.00 PER WEEK**

Modern 3 x 2 acreage living. Open plan kitchen & dining, separate lounge with tile fire. All bedrooms have built in robes. Air conditioning and large shed.

**5 CROYDON STREET \$320.00 PER WEEK**

Stylish 4 x 2 close to the beach. Large bedrooms with built in robes. Vinyl flooring throughout family and dining areas. Double lock up garage. Fully enclosed back yard, outside pets allowed.

**9 WEST BANK CLOSE \$350.00 PER WEEK**

Large spacious 5 x 3 family home; acreage in the Lakes Entrance estate, with beautiful bushland views. Large open plan; generous sized kitchen, dining & family area, Separate living. Balcony access on three sides of the top storey.

## RAY WHITE RURAL (SOUTH COAST WA)

25 Veal Street Hopetoun

[raywhiteruralsouthcoastwa.com.au](http://raywhiteruralsouthcoastwa.com.au)

Ph: 08 9838 3100 • Residential Sales 0428 711 576 • Rural Sales 0429 299 797